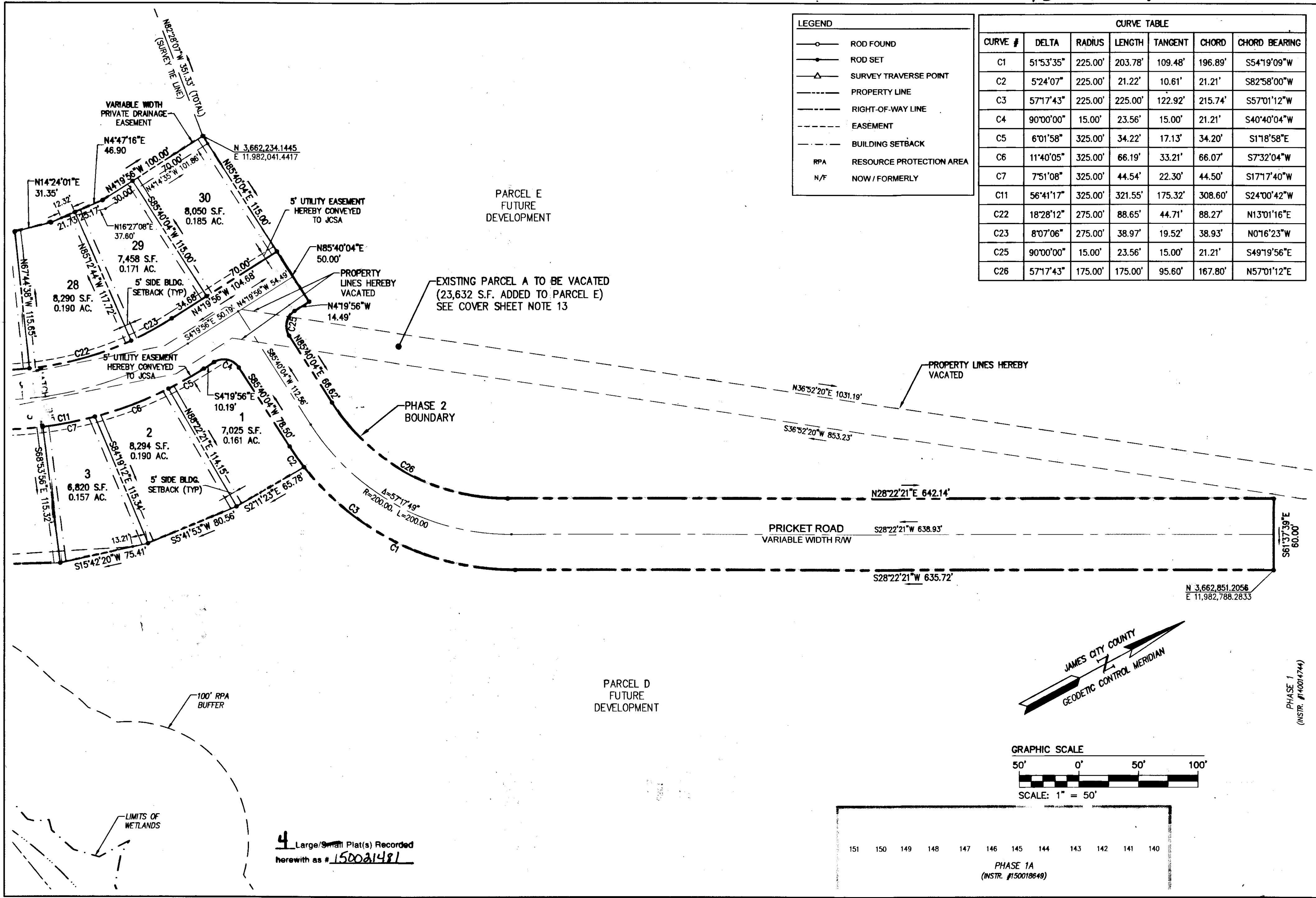
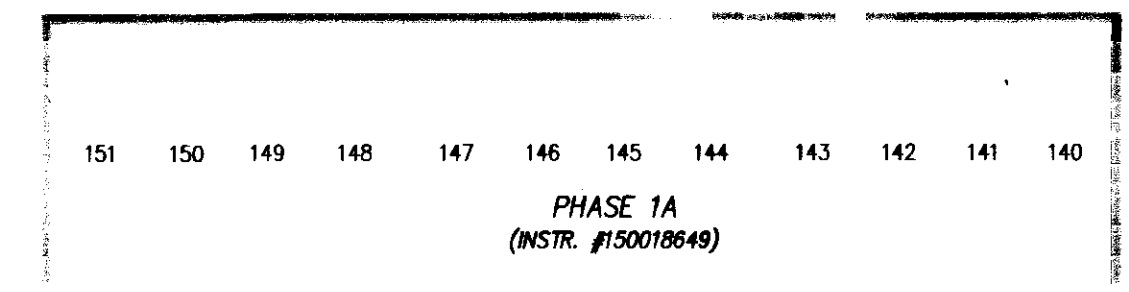
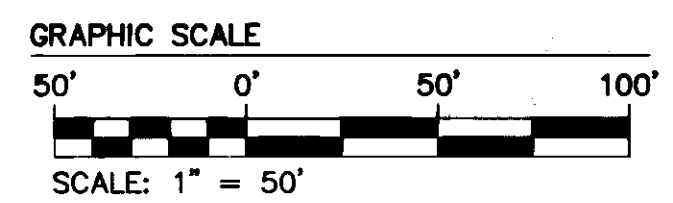
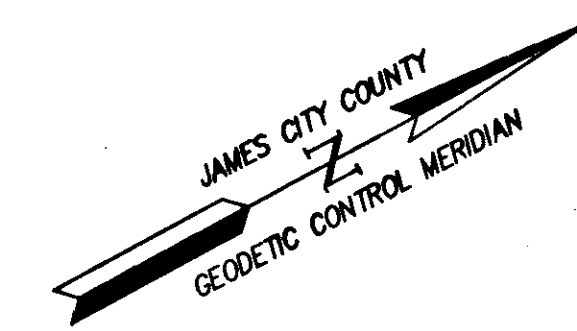


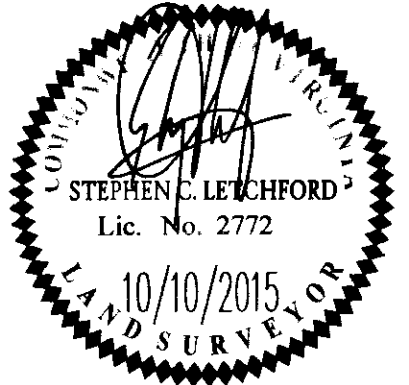
150021481



4 Large/Small Plat(s) Recorded herewith as # 150021481



City of Williamsburg & County of James City Circuit Court: This PLAT was recorded on 11-12-2015 at 8:53 AM/PM: PB PG Document # 150021481 Betsy B. Woolridge, Clerk		
10/10/15 REVISIONS PER JCC COMMENTS		JAG
Rev.	Date	Description
		Revised By



**AES**  
CONSULTING ENGINEERS  
Hampton Roads | Central Virginia | Middle Peninsula  
5248 Olde Towne Road, Suite 1  
Williamsburg, Virginia 23188  
Phone: (757) 253-0040  
Fax: (757) 220-8994  
www.aesva.com

**REF: JCC 9-0034-2015**  
PLAT OF SUBDIVISION  
AND BOUNDARY LINE ADJUSTMENT  
VILLAGE AT CANDLE STATION  
PHASE 2, LOTS 1-9 & LOTS 23-30  
FOR: CANDLE DEVELOPMENT, LLC  
STONEHOUSE DISTRICT JAMES CITY COUNTY VIRGINIA

Project Contacts: JAG/SCL	
Project Number: W10059-00	
Scale: 1"=50'	Date: 10/10/15
Sheet Number	
<b>4 of 4</b>	