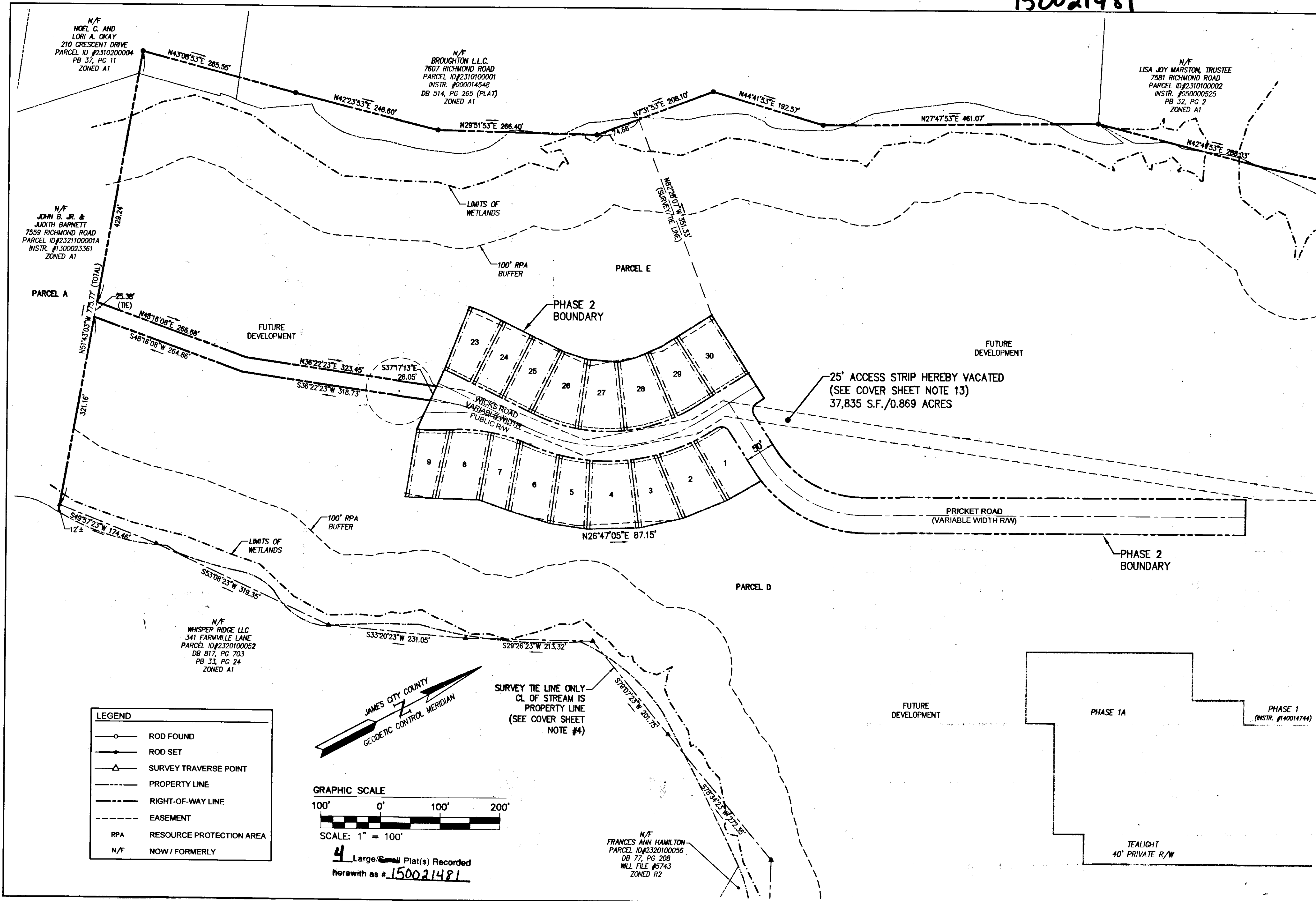
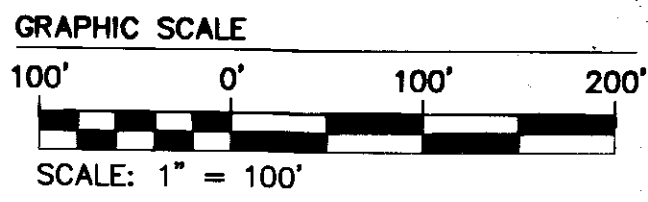
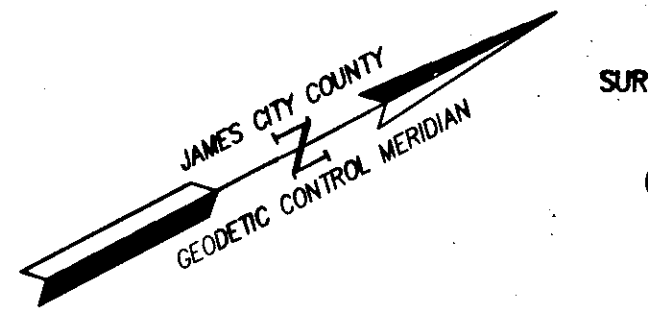


150021481



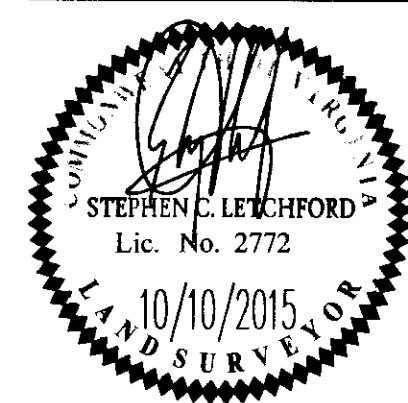
LEGEND

- ROD FOUND
- ROD SET
- △ SURVEY TRAVERSE POINT
- PROPERTY LINE
- - - RIGHT-OF-WAY LINE
- - - EASEMENT
- RPA RESOURCE PROTECTION AREA
- N/F NOW / FORMERLY



4 Large/Small Plat(s) Recorded herewith as # 150021481

City of Williamsburg & County of James City Circuit Court: This PLAT was recorded on 11-12-2015 at 8:53 AM/PM, PB PG Document # 150021481			
BETSY B. WOOLRIDGE, CLERK			
Rebecca Lawrence, Dep. Clerk			
1	10/10/15	REVISIONS PER JCC COMMENTS	JAG
Rev.	Date	Description	Revised By



AEES
CONSULTING ENGINEERS

5248 Olde Towne Road, Suite 1
Williamsburg, Virginia 23188
Phone: (757) 253-0040
Fax: (757) 220-8994
www.aesva.com

Hampton Roads | Central Virginia | Middle Peninsula

REF: JCC 8-0034-2015

PLAT OF SUBDIVISION
AND BOUNDARY LINE ADJUSTMENT
VILLAGE AT CANDLE STATION
PHASE 2, LOTS 1-9 & LOTS 23-30

FOR: CANDLE DEVELOPMENT, LLC

STONEHOUSE DISTRICT JAMES CITY COUNTY VIRGINIA

Project Contacts:	JAG/SCL
Project Number:	W10059-00
Scale:	1"=100'
Date:	10/10/15
Sheet Number	2 of 4