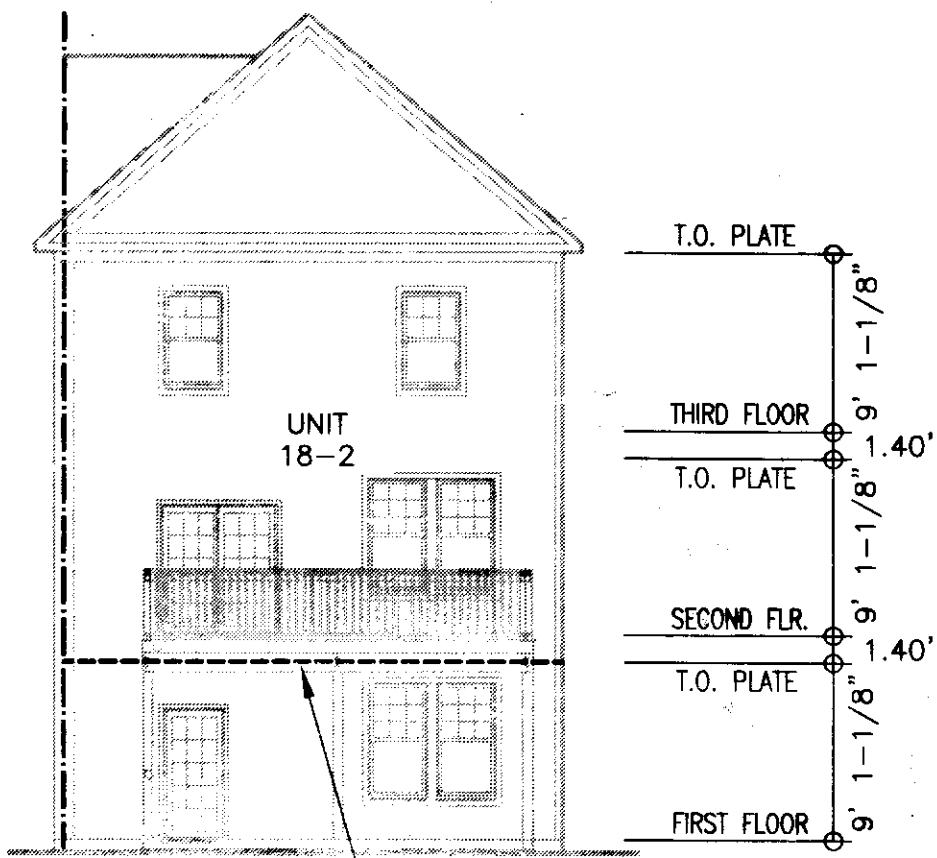
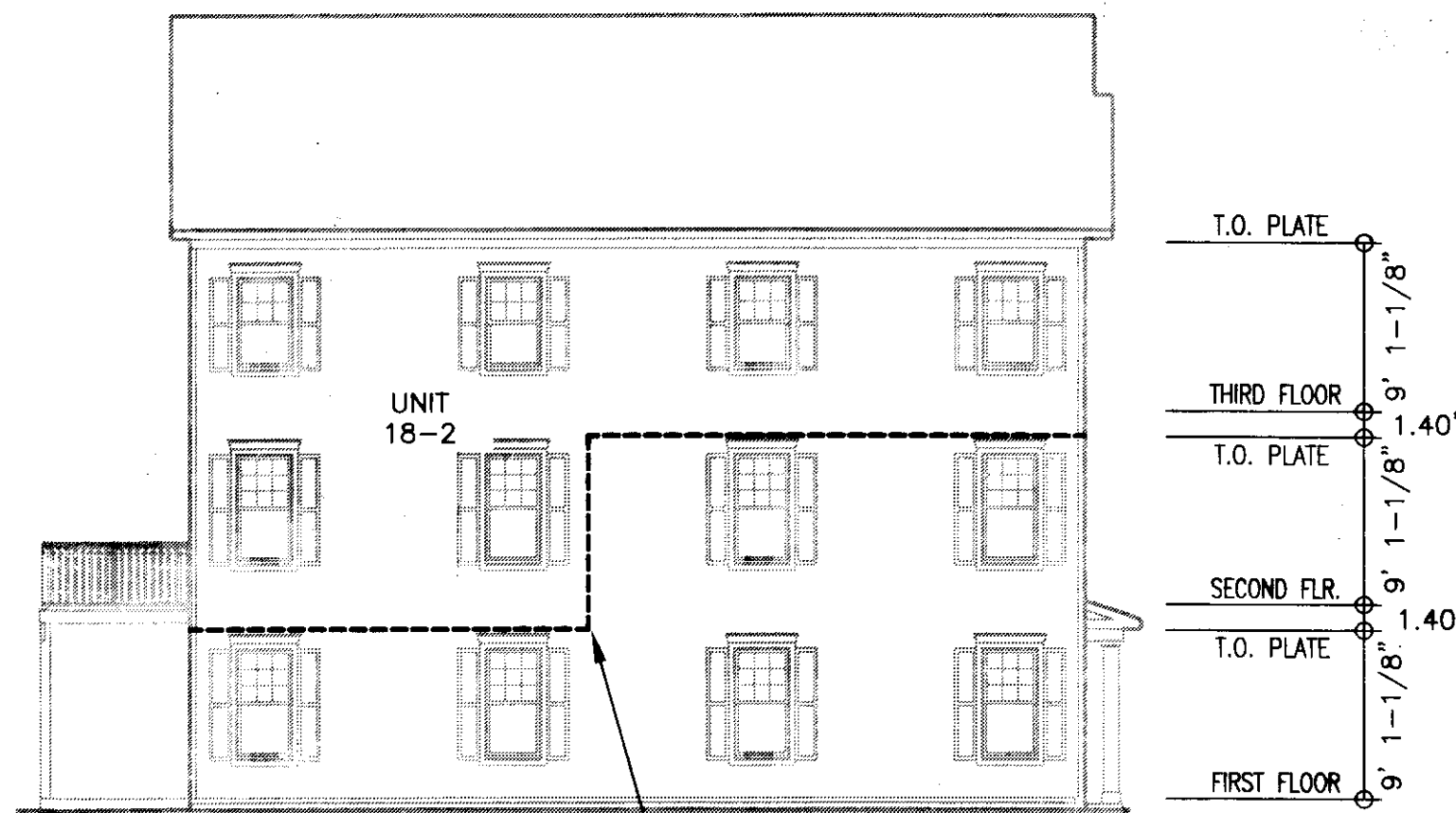


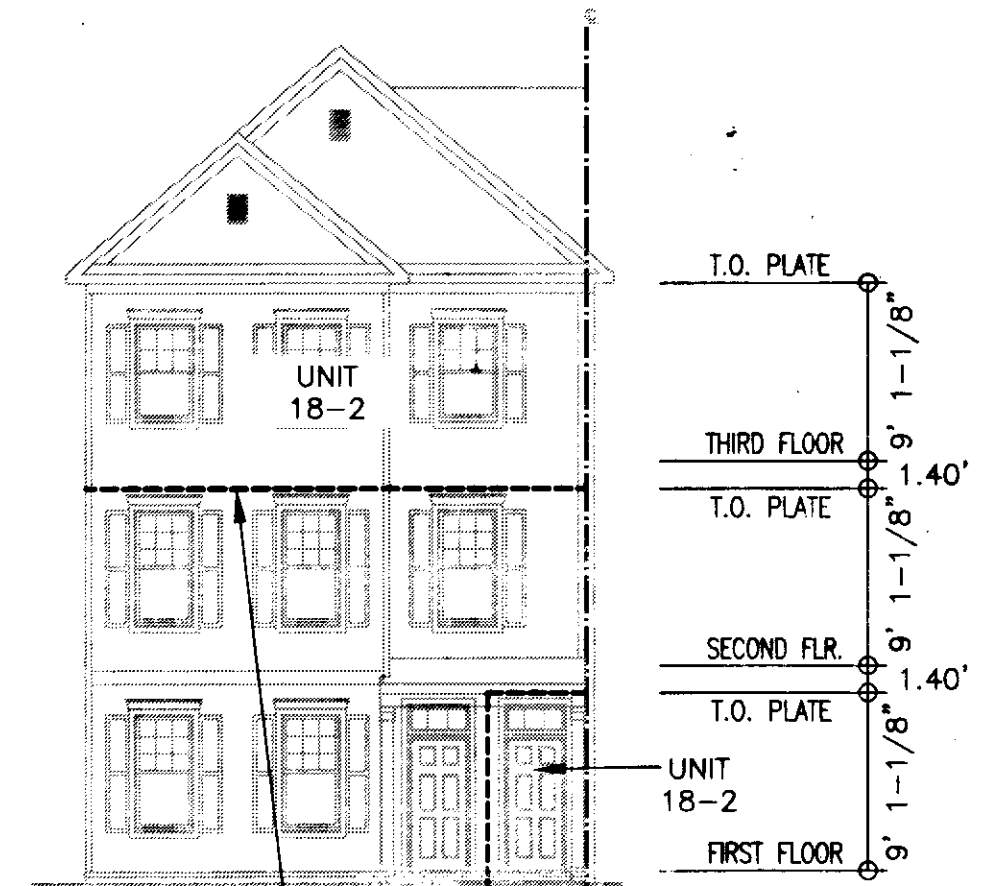
150019794



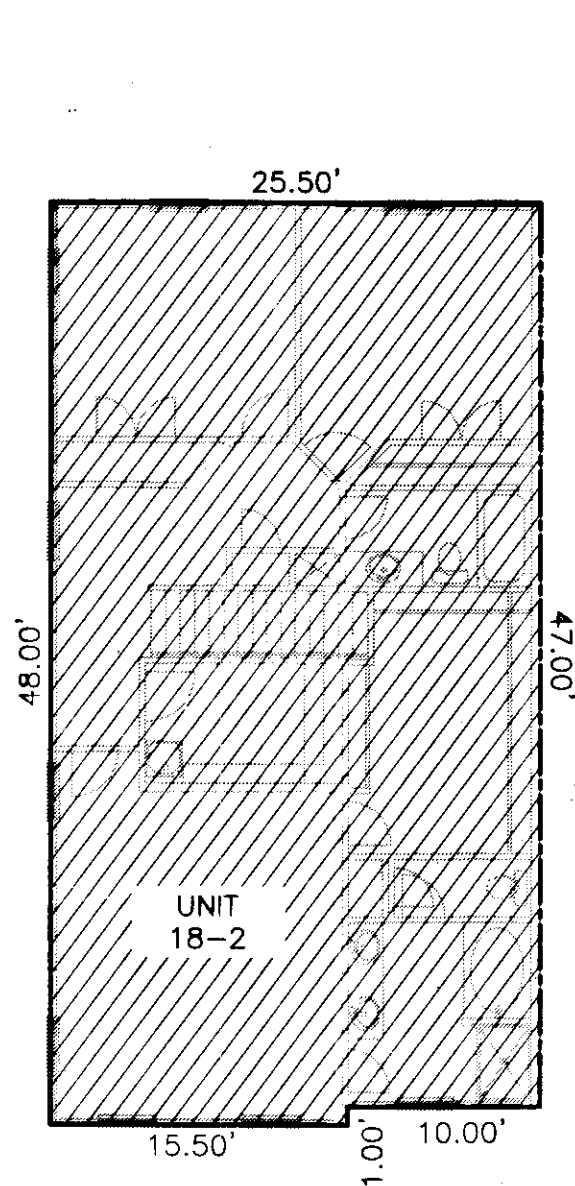
APPROXIMATE LIMITS OF SUBMITTED LAND



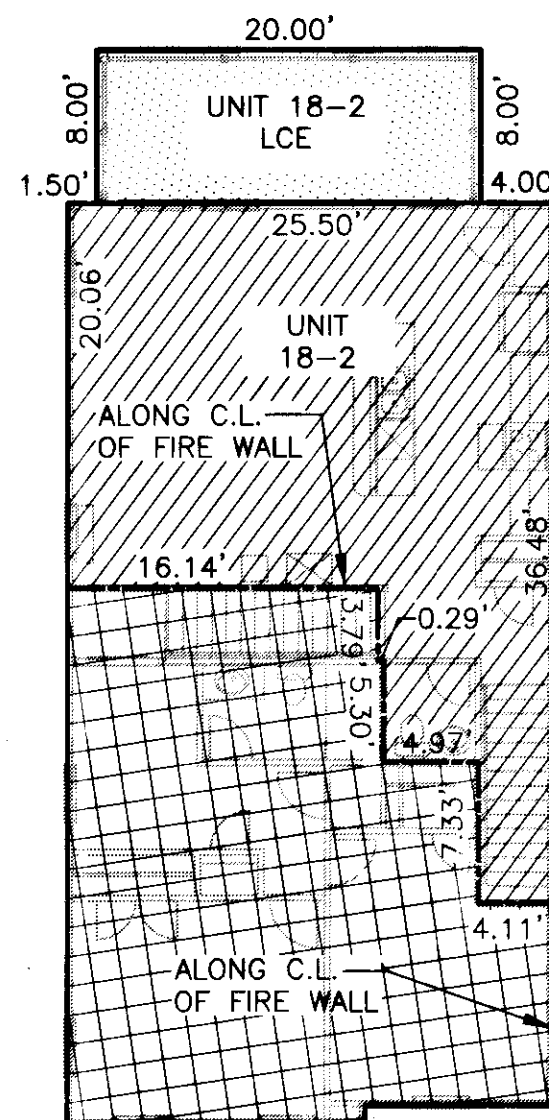
APPROXIMATE LIMITS OF SUBMITTED LAND



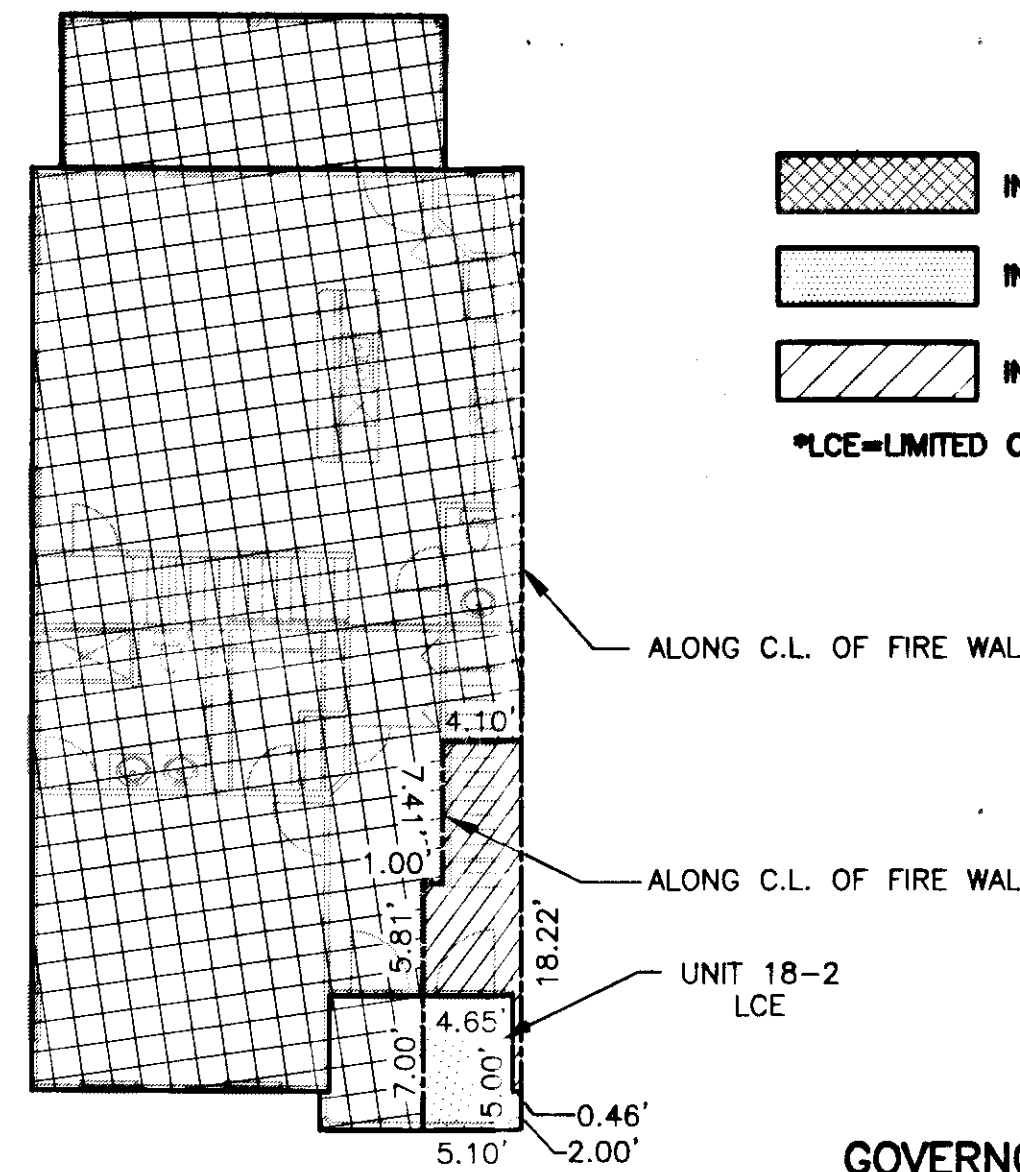
APPROXIMATE LIMITS OF SUBMITTED LAND






3RD FLOOR DETAIL



2ND FLOOR DETAIL



1ST FLOOR DETAIL

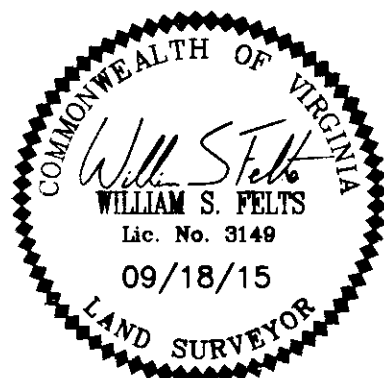
-  INDICATES SUBMITTED LAND
-  INDICATES LIMITED COMMON ELEMENT
-  INDICATES UNIT AREA
- *LCE=LIMITED COMMON ELEMENT

PLAN OF
PHASE 3B
GOVERNOR'S GROVE AT FIVE FORKS
A CONDOMINIUM
LOCATED IN THE BERKELEY DISTRICT
JAMES CITY COUNTY, VIRGINIA

DATE: 09/18/15 SCALE: 1" = 10' JOB# 06-460
SHEET: 1 OF 1

LandTech Resources, Inc.
Surveying • Engineering • GPS

3925 Midlands Road, Williamsburg, VA 23188
Phone: (757) 565-1677 Fax: (757) 565-0782
web: landtechresources.com



NOTE:
BUILDING DIMENSIONS AND ELEVATIONS SHOWN ARE BASED ON ARCHITECTURAL PLANS PREPARED BY JAMES WENTLING-ARCHITECT.

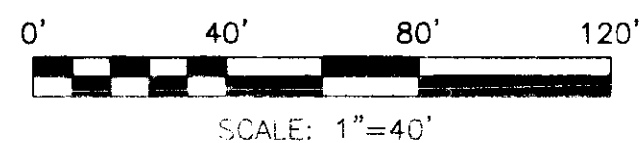
SURVEYORS CERTIFICATE

I HEREBY CERTIFY THAT TO THE BEST OF MY KNOWLEDGE OR BELIEF, THIS PLAN IS ACCURATE AND COMPLIES WITH THE PROVISIONS OF SECTION 55-79.58 (B) OF THE CODE OF VIRGINIA 1950 AS AMENDED AND THAT ALL UNITS DEPICTED HEREON HAVE BEEN SUBSTANTIALLY COMPLETED.

William S. Felts
WILLIAM S. FELTS LIC. #3149

09/18/15
DATE

UNIT NUMBER	UNIT TYPE	STREET ADDRESS	PARCEL ID#
18-2	672	1802 PROSPERITY CT	4622101802



City of Williamsburg & County of James City
Circuit Court: This PLAT was recorded on
10-19-2015
At 10:27 AM/PM, PB PG
Document # 150019794
herewith as # 150019794
BETSY B. WOOLRIDGE, CLERK
Rosanna Cannon, Dep. Clerk