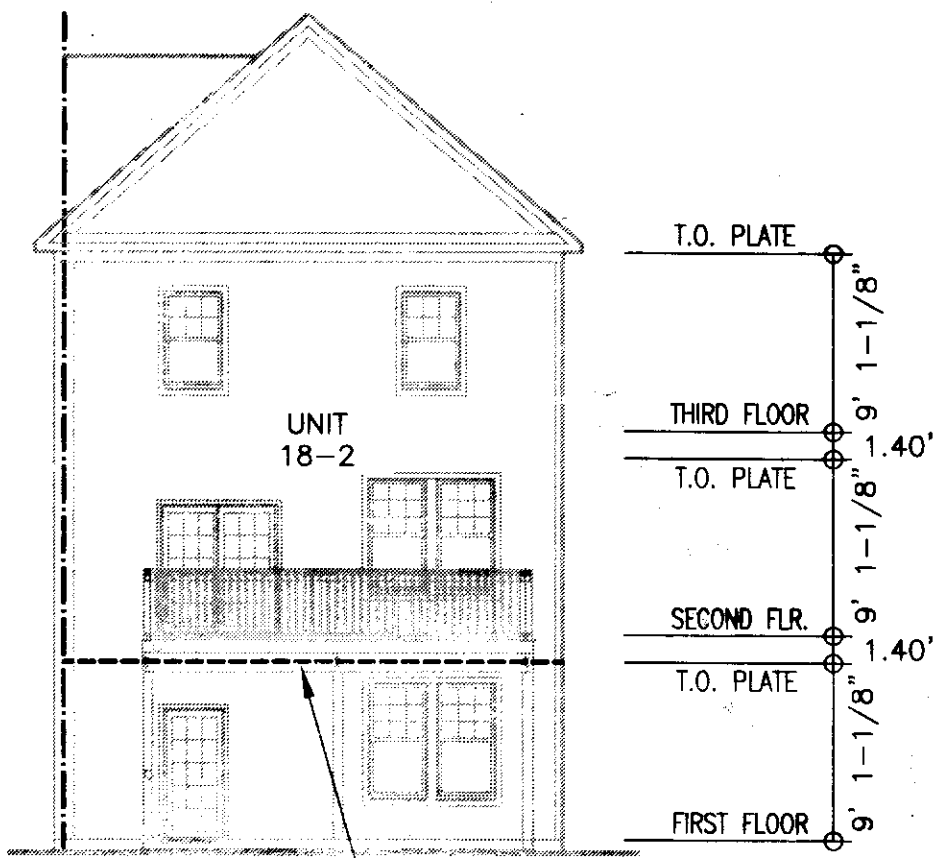
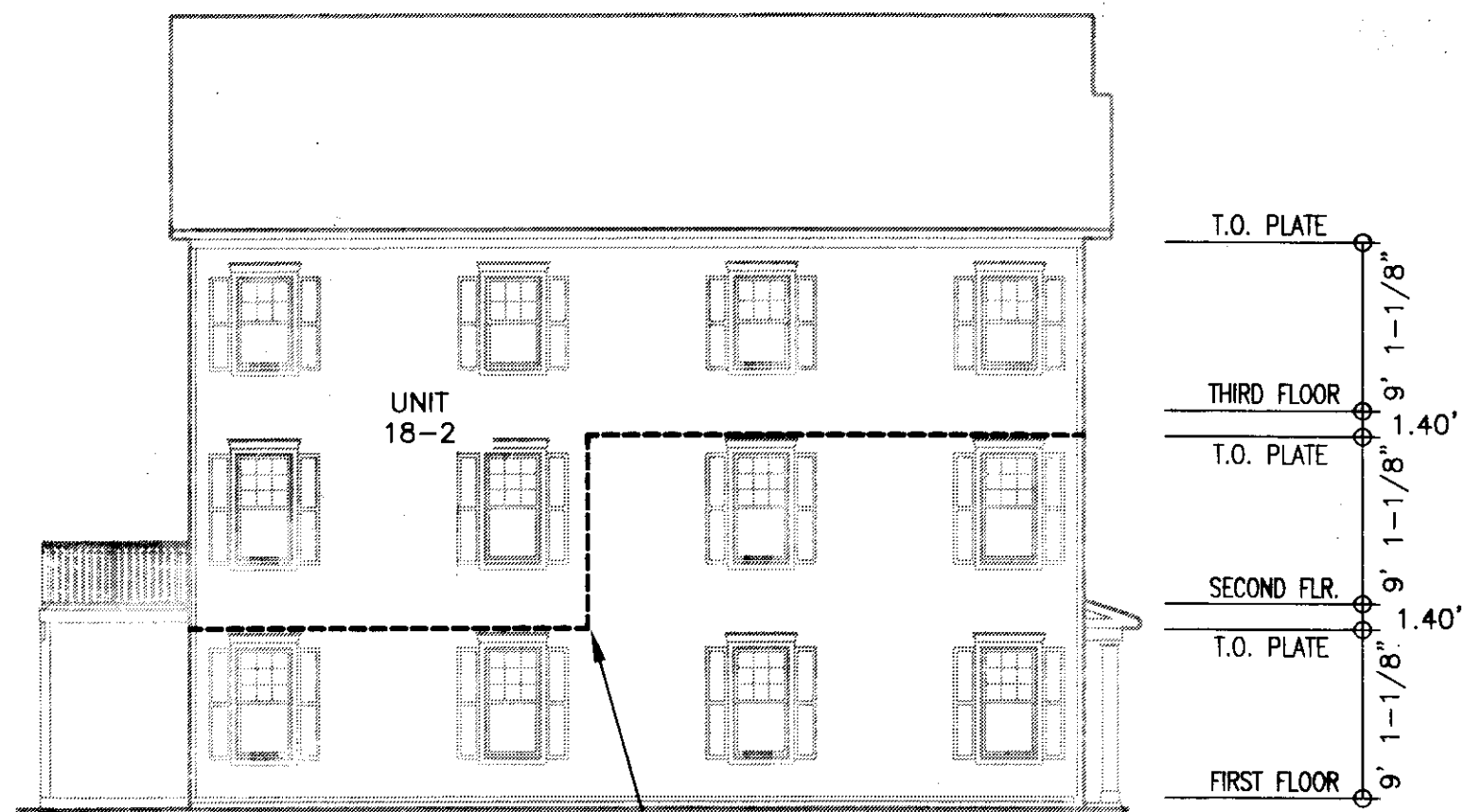


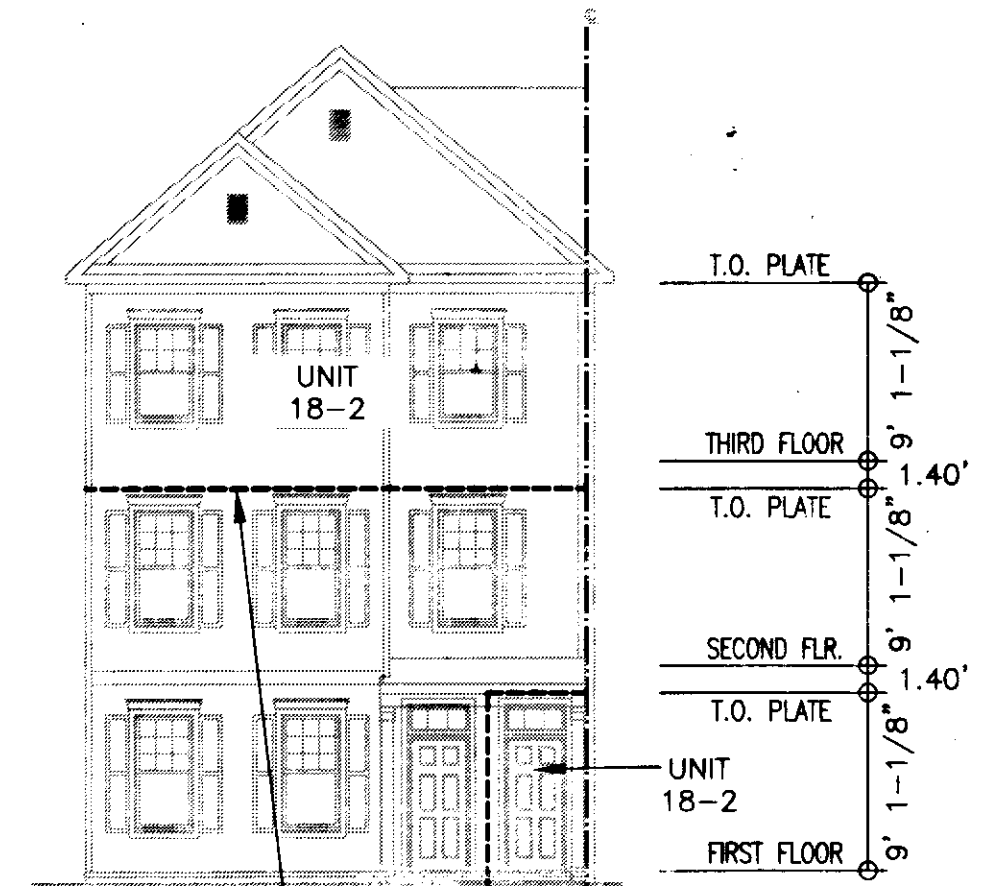
150019794



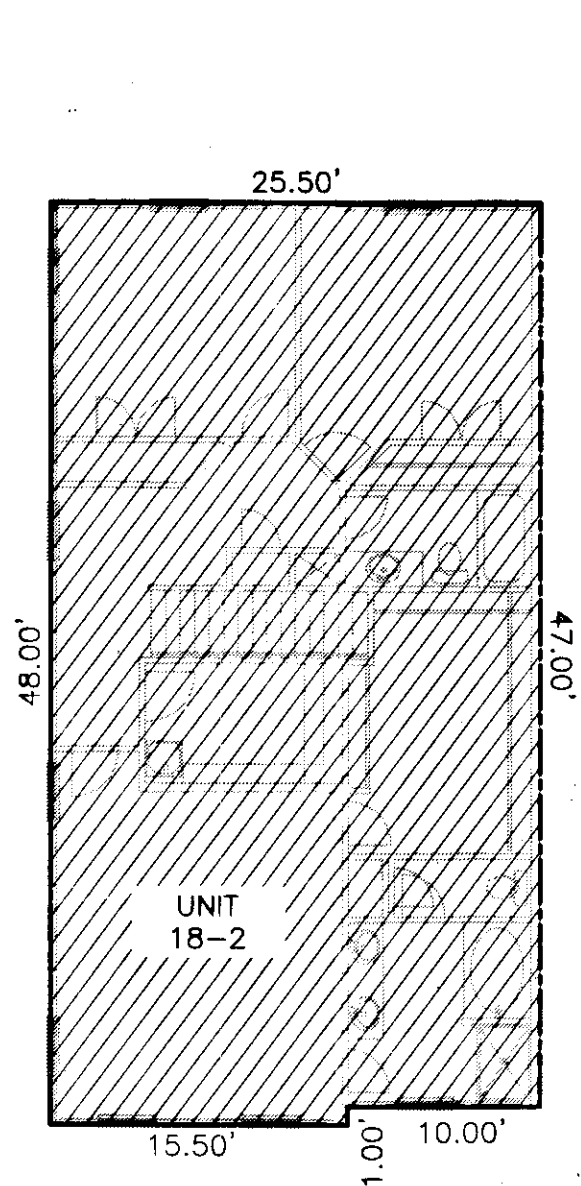
APPROXIMATE LIMITS OF SUBMITTED LAND



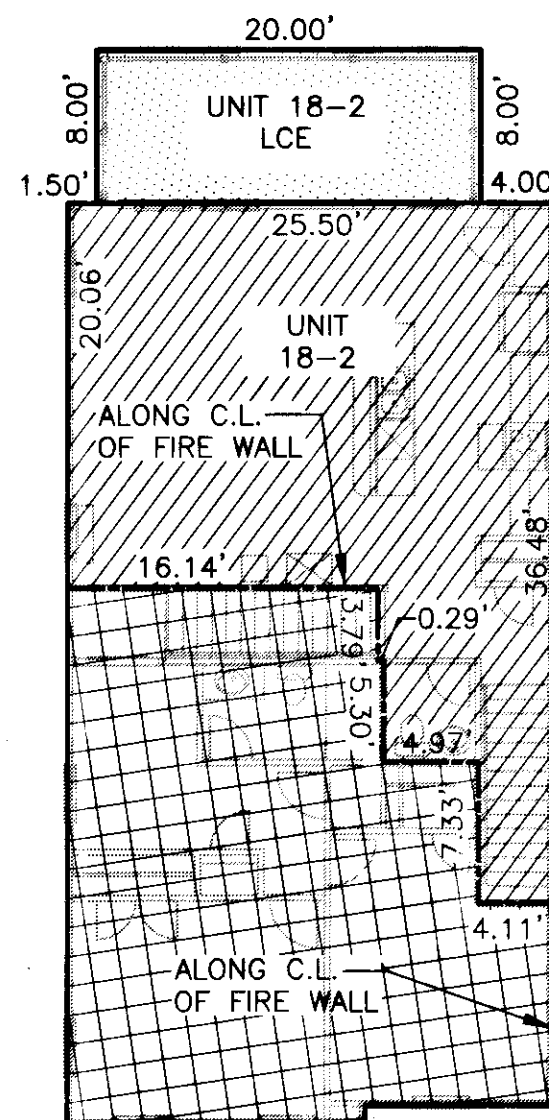
APPROXIMATE LIMITS OF SUBMITTED LAND



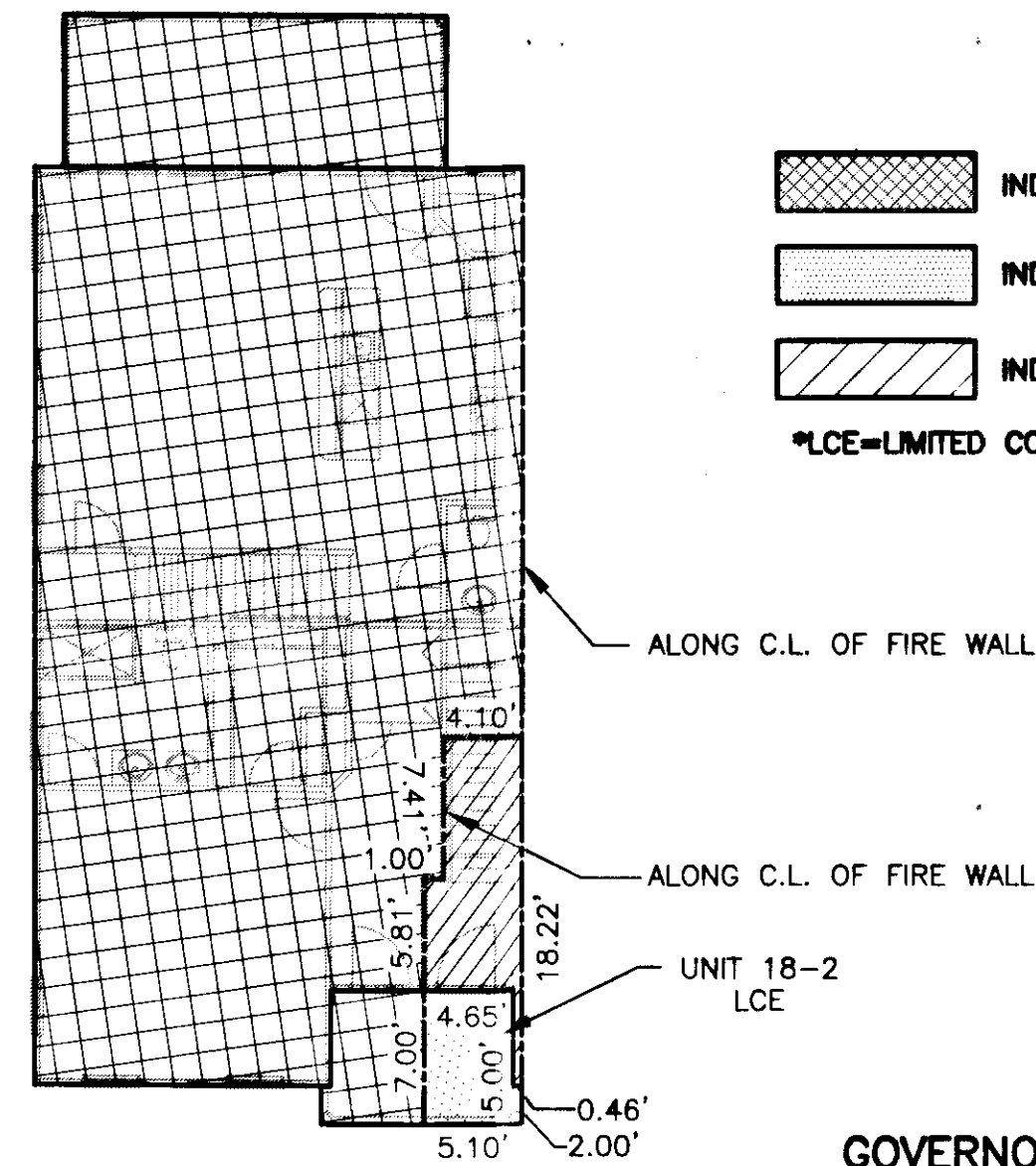
APPROXIMATE LIMITS OF SUBMITTED LAND






3<sup>RD</sup> FLOOR DETAIL



2<sup>ND</sup> FLOOR DETAIL



1<sup>ST</sup> FLOOR DETAIL

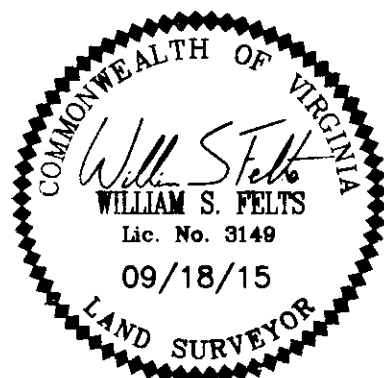
-  INDICATES SUBMITTED LAND
-  INDICATES LIMITED COMMON ELEMENT
-  INDICATES UNIT AREA
- \*LCE=LIMITED COMMON ELEMENT

PLAN OF  
PHASE 3B  
GOVERNOR'S GROVE AT FIVE FORKS  
A CONDOMINIUM  
LOCATED IN THE BERKELEY DISTRICT  
JAMES CITY COUNTY, VIRGINIA

DATE: 09/18/15 SCALE: 1" = 10' JOB# 06-460  
SHEET: 1 OF 1

**LandTech Resources, Inc.**  
Surveying • Engineering • GPS

3925 Midlands Road, Williamsburg, VA 23188  
Phone: (757) 565-1677 Fax: (757) 565-0782  
web: landtechresources.com



**NOTE:**  
BUILDING DIMENSIONS AND ELEVATIONS SHOWN ARE BASED ON ARCHITECTURAL PLANS PREPARED BY JAMES WENTLING-ARCHITECT.

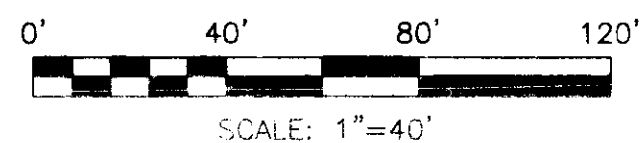
**SURVEYORS CERTIFICATE**

I HEREBY CERTIFY THAT TO THE BEST OF MY KNOWLEDGE OR BELIEF, THIS PLAN IS ACCURATE AND COMPLIES WITH THE PROVISIONS OF SECTION 55-79.58 (B) OF THE CODE OF VIRGINIA 1950 AS AMENDED AND THAT ALL UNITS DEPICTED HEREON HAVE BEEN SUBSTANTIALLY COMPLETED.

*William S. Felts*  
WILLIAM S. FELTS LIC. #3149

09/18/15  
DATE

UNIT NUMBER	UNIT TYPE	STREET ADDRESS	PARCEL ID#
18-2	672	1802 PROSPERITY CT	4622101802



City of Williamsburg & County of James City  
Circuit Court: This PLAT was recorded on  
10-19-2015  
At 10:27 AM/PM, PB \_\_\_\_\_ PG \_\_\_\_\_  
Document # 150019794  
herewith as # 150019794  
BETSY B. WOOLRIDGE, CLERK  
*Roxanna Cannon*, Dep. Clerk