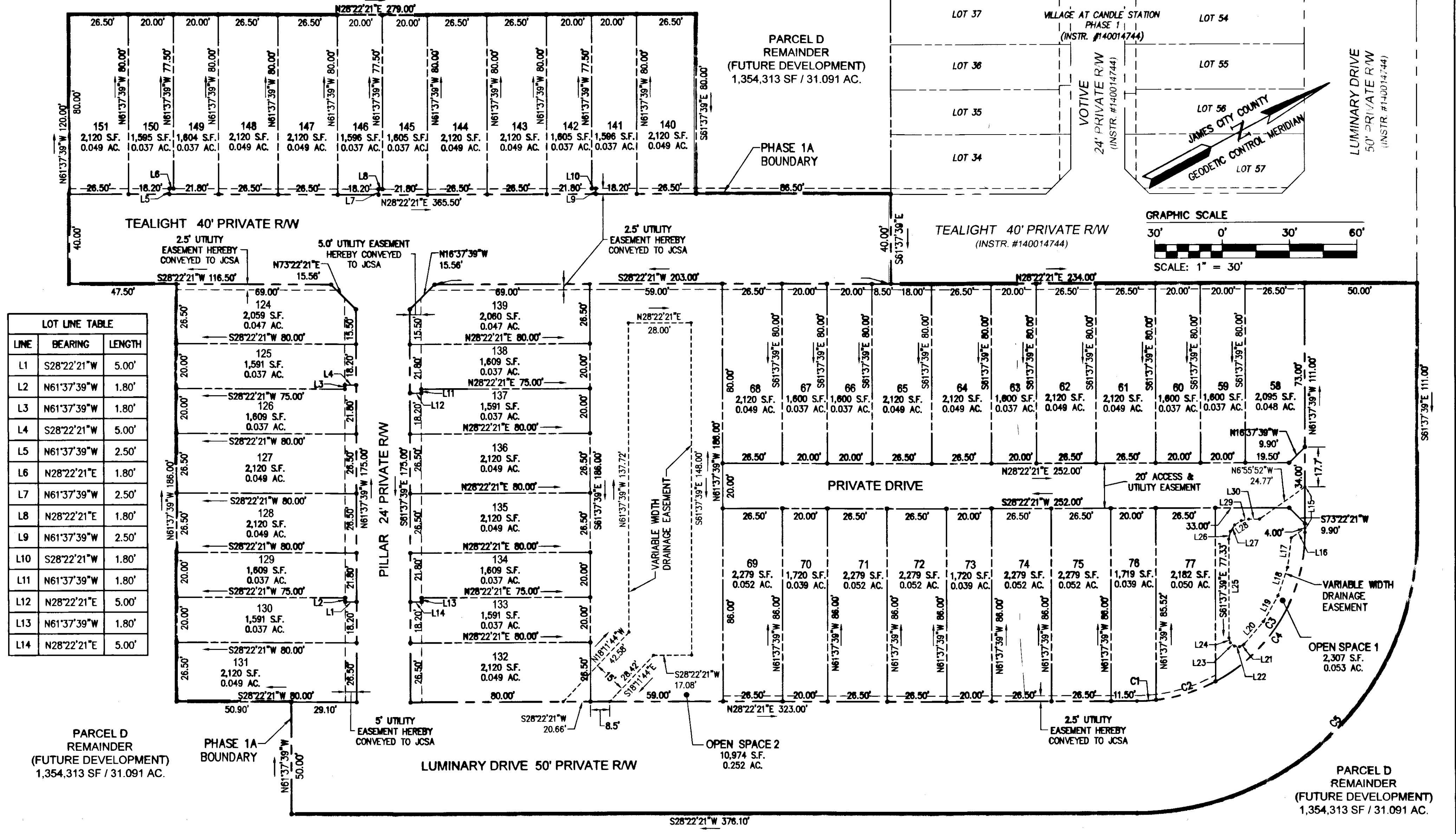


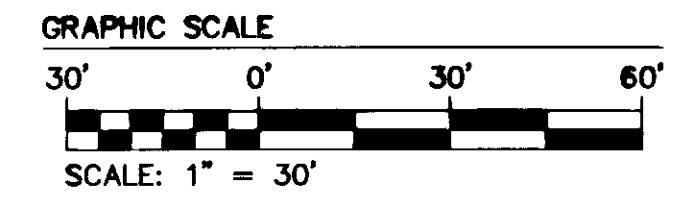
150018649

EASEMENT LINE TABLE			EASEMENT LINE TABLE			EASEMENT LINE TABLE			EASEMENT LINE TABLE		
LINE	BEARING	LENGTH	LINE	BEARING	LENGTH	LINE	BEARING	LENGTH	LINE	BEARING	LENGTH
L15	S61°37'39"E	18.38'	L19	S32°00'37"E	13.28'	L23	S68°11'34"W	2.30'	L27	N27°52'39"W	3.51'
L16	S6°55'52"E	7.47'	L20	S20°57'50"E	13.28'	L24	N78°21'15"W	2.30'	L28	N5°22'39"W	3.51'
L17	S54°21'01"E	13.29'	L21	S17°12'12"W	2.30'	L25	N61°37'39"W	43.90'	L29	N17°07'21"E	3.51'
L18	S43°03'33"E	13.29'	L22	S34°44'23"W	2.30'	L26	N50°22'39"W	3.51'	L30	N28°22'21"E	4.79'

CURVE TABLE						
CURVE #	DELTA	RADIUS	LENGTH	TANGENT	CHORD	CHORD BEARING
C1	6°30'27"	75.00'	8.52'	4.26'	8.51'	N25°07'07"E
C2	21°18'38"	75.00'	27.90'	14.11'	27.74'	N11°12'35"E
C3	62°10'55"	75.00'	81.40'	45.23'	77.46'	N30°32'12"W
C4	90°00'00"	75.00'	117.81'	75.00'	106.07'	N16°37'39"W
C5	90°00'00"	125.00'	196.35'	125.00'	176.78'	S16°37'39"E

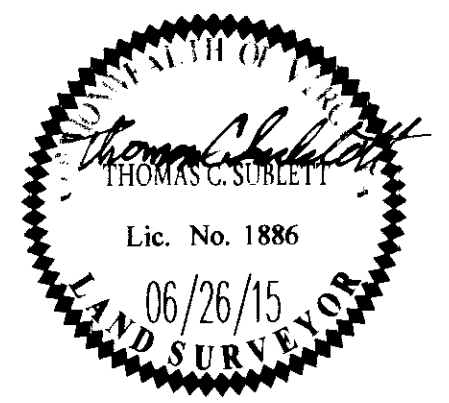


LOT LINE TABLE		
LINE	BEARING	LENGTH
L1	S28°22'21"W	5.00'
L2	N61°37'39"W	1.80'
L3	N61°37'39"W	1.80'
L4	S28°22'21"W	5.00'
L5	N61°37'39"W	2.50'
L6	N28°22'21"E	1.80'
L7	N61°37'39"W	2.50'
L8	N28°22'21"E	1.80'
L9	N61°37'39"W	2.50'
L10	S28°22'21"W	1.80'
L11	N61°37'39"W	1.80'
L12	N28°22'21"E	5.00'
L13	N61°37'39"W	1.80'
L14	N28°22'21"E	5.00'



City of Williamsburg & County of James City
 Circuit Court: This PLAT was recorded on 9-29-2015
 at 9:12 AM/PM, PG _____
 Document # 150018649
 BETSY B. WOOLRIDGE, CLERK
 _____, Dep. Clerk

Rev.	Date	Description	JAG
1	6/26/15	REVISION PER JCC COMMENTS DATED JUNE 2016	JAG



AES
 CONSULTING ENGINEERS
 5248 Olde Towne Road, Suite 1
 Williamsburg, Virginia 23188
 Phone: (757) 253-0040
 Fax: (757) 220-8994
 www.aesva.com

PLAT OF SUBDIVISION
VILLAGE AT CANDLE STATION
 PHASE 1A, LOTS 58-77 & LOTS 124-151
 FOR: CANDLE DEVELOPMENT, LLC
 STONEHOUSE DISTRICT JAMES CITY COUNTY VIRGINIA

Project Contacts: JAG/TCS
 Project Number: W10059-00
 Scale: 1"=30' Date: 5/26/15
 Sheet Number: 2 of 2