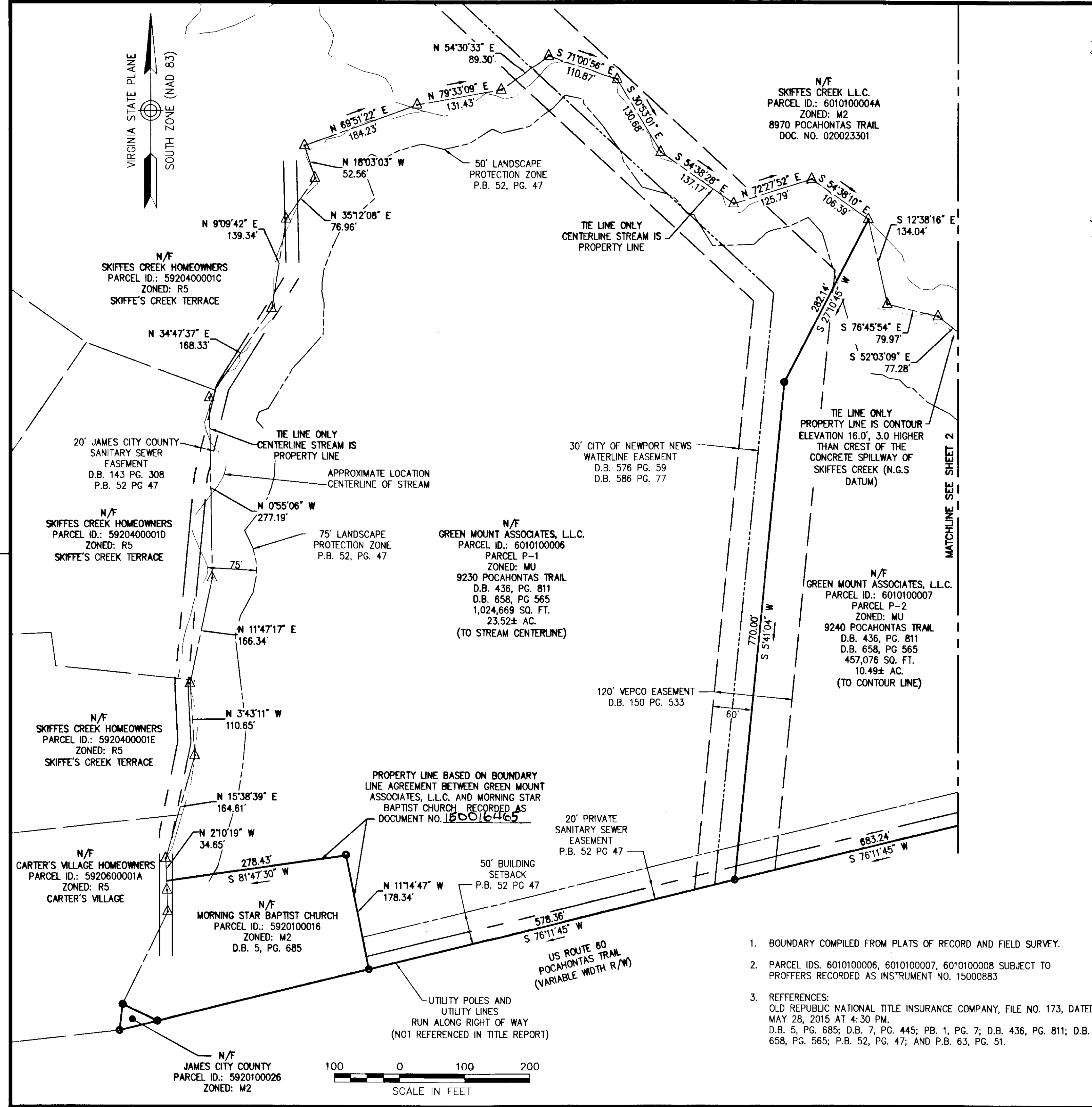
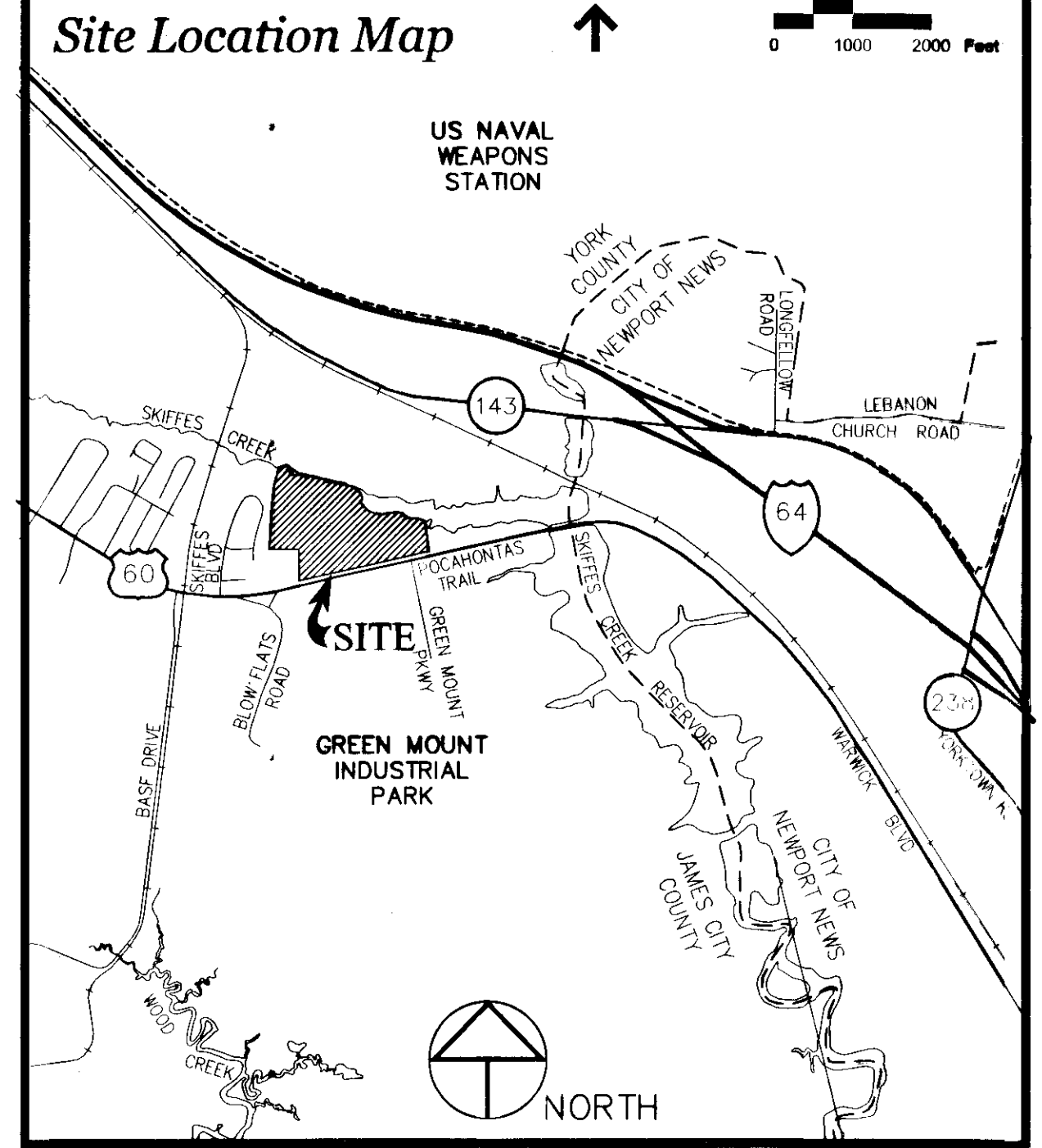
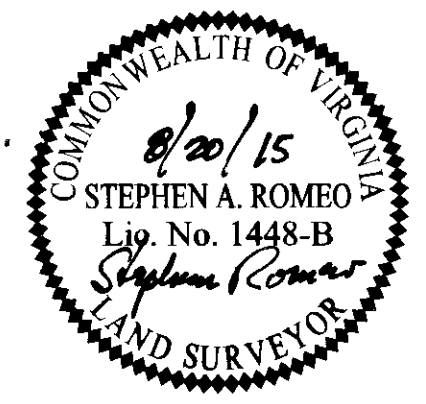


150016466



SURVEYOR'S CERTIFICATION
 I HEREBY CERTIFY THAT TO THE BEST OF MY KNOWLEDGE AND BELIEF, THIS SURVEY COMPLIES WITH THE APPLICABLE REQUIREMENTS ESTABLISHED BY THE COMMONWEALTH OF VIRGINIA BOARD FOR ARCHITECTS, ENGINEERS, LAND SURVEYORS, CERTIFIED INTERIOR DESIGNERS AND LANDSCAPE ARCHITECTS EFFECTIVE JULY 1, 2010.



BOUNDARY SURVEY OF GREEN MOUNT ASSOCIATES, L.L.C.
 PARCEL IDS. 6010100006, 6010100007, 6010100008

JAMES CITY COUNTY, VIRGINIA
 DATE: 8/20/15
 SHEET 1 OF 2

- BOUNDARY COMPILED FROM PLATS OF RECORD AND FIELD SURVEY.
- PARCEL IDS. 6010100006, 6010100007, 6010100008 SUBJECT TO PROFFERS RECORDED AS INSTRUMENT NO. 15000883
- REFERENCES: OLD REPUBLIC NATIONAL TITLE INSURANCE COMPANY, FILE NO. 173, DATED MAY 28, 2015 AT 4:30 PM. D.B. 5, PG. 685; D.B. 7, PG. 445; P.B. 1, PG. 7; D.B. 436, PG. 811; D.B. 658, PG. 565; P.B. 52, PG. 47; AND P.B. 63, PG. 51.

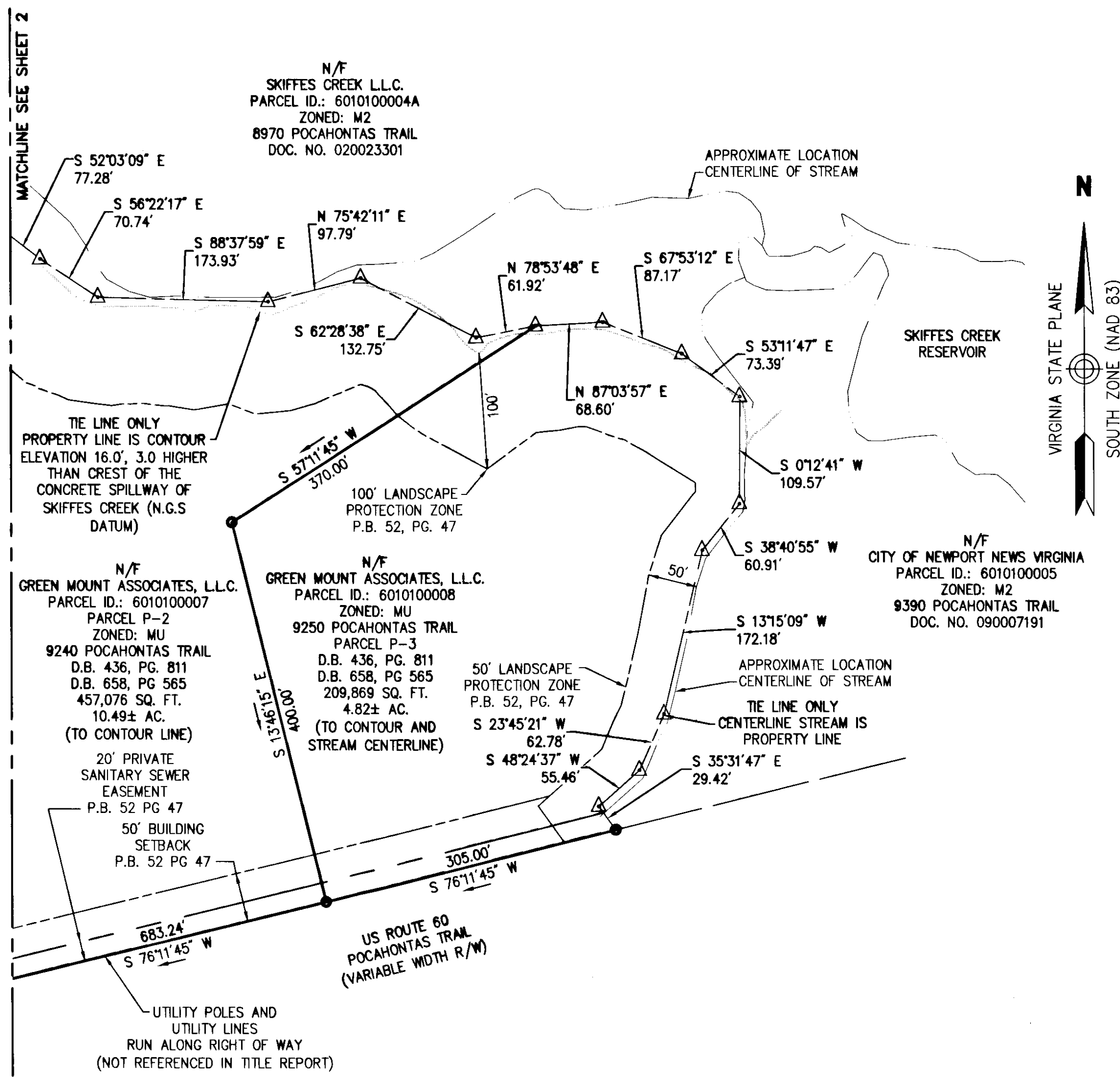
2 Large/Small Plat(s) Recorded herewith as # 150016466

City of Williamsburg & County of James City Circuit Court: This PLAT was recorded on 8-24-2015 at 10:22 AM/PM, PG. Document # 150016466 BETSY B. WOOLRIDGE, CLERK Amy Storey, Dep. Clerk



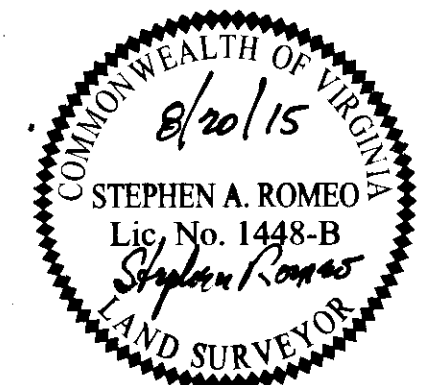
Vanasse Hangen Brustlin, Inc.
 Transportation Land Development Environmental Services
 351 McLaus Circle, Suite 3
 Williamsburg, Virginia 23185
 (757) 220-0500 & FAX (757) 220-8544





SURVEYOR'S CERTIFICATION

I HEREBY CERTIFY THAT TO THE BEST OF MY KNOWLEDGE AND BELIEF, THIS SURVEY COMPLIES WITH THE APPLICABLE REQUIREMENTS ESTABLISHED BY THE COMMONWEALTH OF VIRGINIA BOARD FOR ARCHITECTS, ENGINEERS, LAND SURVEYORS, CERTIFIED INTERIOR DESIGNERS AND LANDSCAPE ARCHITECTS EFFECTIVE JULY 1, 2010.



BOUNDARY SURVEY
OF
GREEN MOUNT ASSOCIATES, L.L.C.
PARCEL IDS. 6010100006, 6010100007, 6010100008

JAMES CITY COUNTY, VIRGINIA
DATE: 8/20/15
SHEET 2 OF 2

2 Large/Small Plat(s) Recorded
herewith as # 156016466



City of Williamsburg & County of James City
Circuit Court: This PLAT was recorded on
8-24-2015
at 10:22 AM/PM, PG. PG.
Document # 156016466
BETSY B. WOOLRIDGE, CLERK
Dep. Clerk



Vanasse Hangen Brustlin, Inc.
Transportation Land Development Environmental Services
351 McLaw Circle, Suite 3
Williamsburg, Virginia 23185
(757) 220-0500 & FAX (757) 220-8544