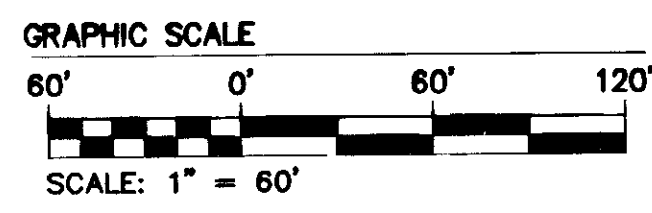
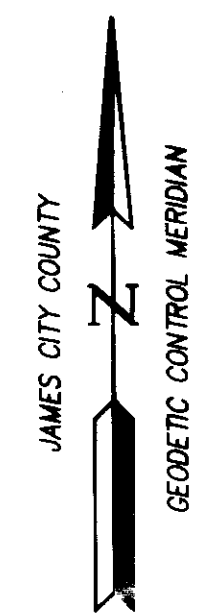
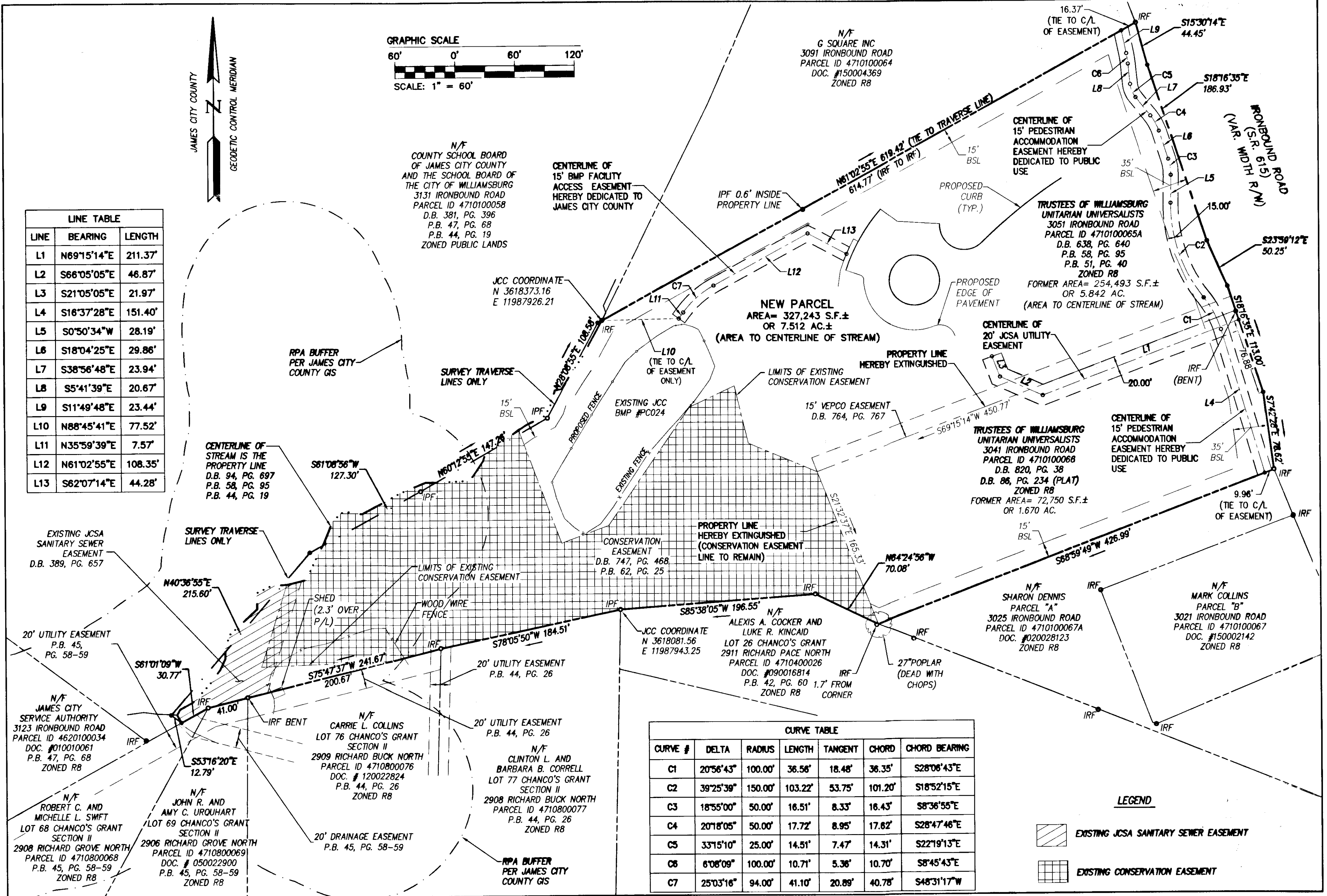


150014823



LINE	BEARING	LENGTH
L1	N69°15'14"E	211.37'
L2	S66°05'05"E	46.87'
L3	S21°05'05"E	21.97'
L4	S16°37'28"E	151.40'
L5	S0°50'34"W	28.19'
L6	S18°04'25"E	29.86'
L7	S38°56'48"E	23.94'
L8	S5°41'39"E	20.67'
L9	S11°49'48"E	23.44'
L10	N88°45'41"E	77.52'
L11	N35°59'39"E	7.57'
L12	N61°02'55"E	108.35'
L13	S62°07'14"E	44.28'



CURVE #	DELTA	RADIUS	LENGTH	TANGENT	CHORD	CHORD BEARING
C1	20°56'43"	100.00'	36.56'	18.48'	36.35'	S28°06'43"E
C2	39°25'39"	150.00'	103.22'	53.75'	101.20'	S18°52'15"E
C3	18°55'00"	50.00'	16.51'	8.33'	16.43'	S8°36'55"E
C4	20°18'05"	50.00'	17.72'	8.95'	17.62'	S28°47'46"E
C5	33°15'10"	25.00'	14.51'	7.47'	14.31'	S22°19'13"E
C6	6°06'09"	100.00'	10.71'	5.36'	10.70'	S8°45'43"E
C7	25°03'16"	94.00'	41.10'	20.89'	40.78'	S48°31'17"W

**LEGEND**

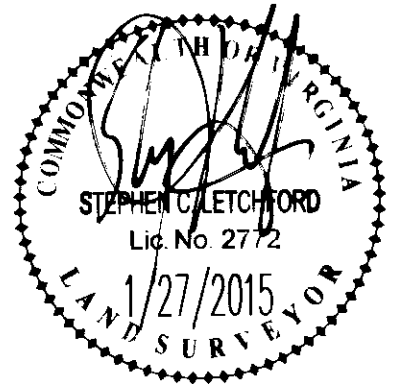
EXISTING JCSA SANITARY SEWER EASEMENT

EXISTING CONSERVATION EASEMENT

City of Williamsburg & County of James City  
 Circuit Court: This PLAT was recorded on July 29, 2015  
 at 8:35 (AM/PM), PG. 1  
 Document # 150014823  
 BETSY B. WOOLRIDGE, CLERK  
Ed Conner, Dep. Clerk

2 Large 1 Plat(s) Recorded  
 herewith as # 150014823

Rev.	Date	Description	Revised By



**NES**  
 CONSULTING ENGINEERS

5248 Old Towne Road, Suite 1  
 Williamsburg, Virginia 23188  
 Phone: (757) 253-0040  
 Fax: (757) 220-8994  
 www.nesva.com

Hampton Roads | Central Virginia | Middle Peninsula

PLAT SHOWING LOT LINE EXTINGUISHMENT  
**3051 AND 3041 IRONBOUND ROAD**  
 OWNED BY TRUSTEES OF  
**WILLIAMSBURG UNITARIAN UNIVERSALISTS**

BERKELEY DISTRICT      JAMES CITY COUNTY      VIRGINIA

Project Contacts: SCLJ/JS  
 Project Number: W10324  
 Scale: 1"=60'      Date: 1/27/16  
 Sheet Number  
**2 OF 2**