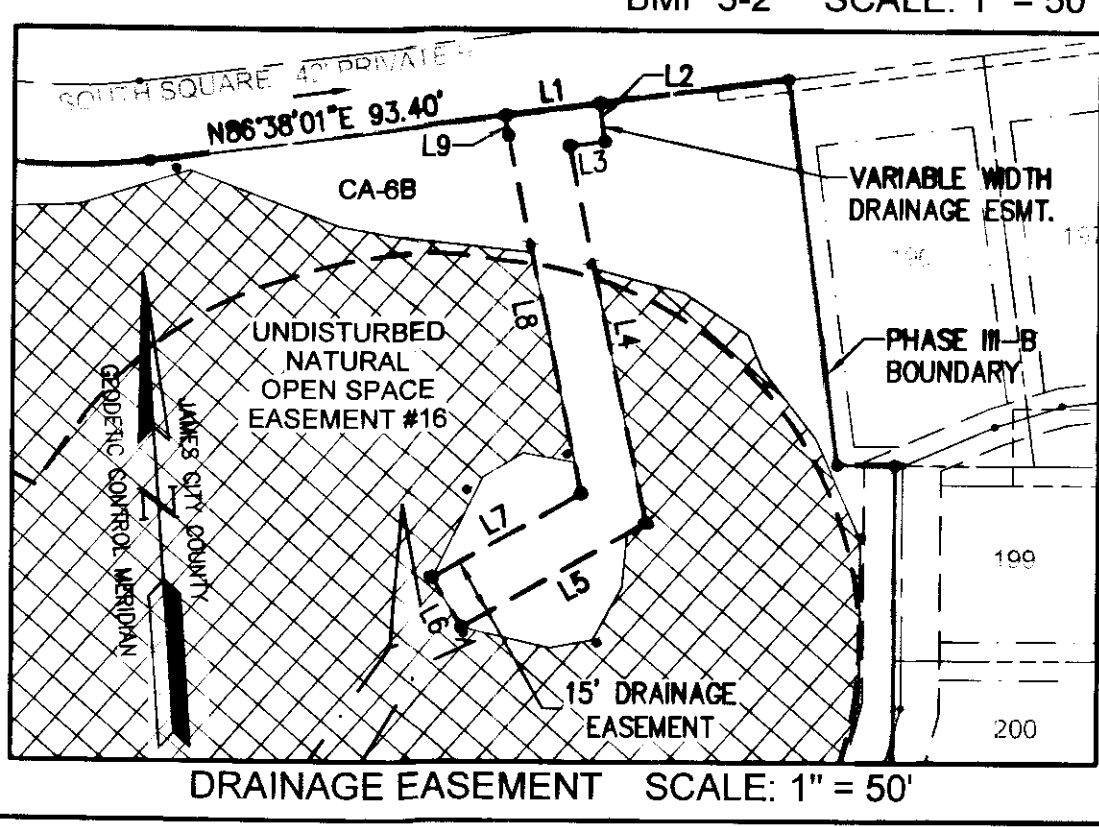
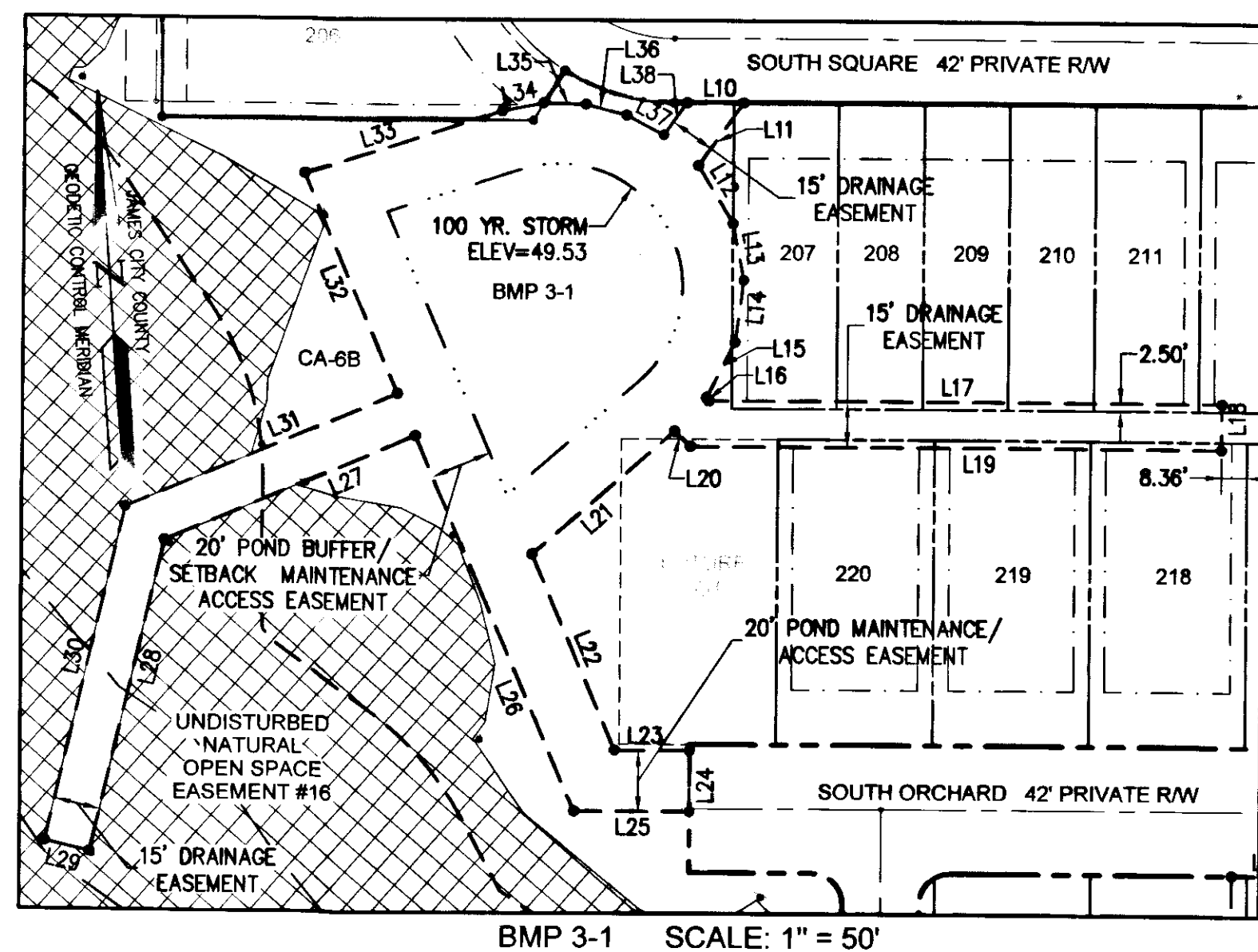
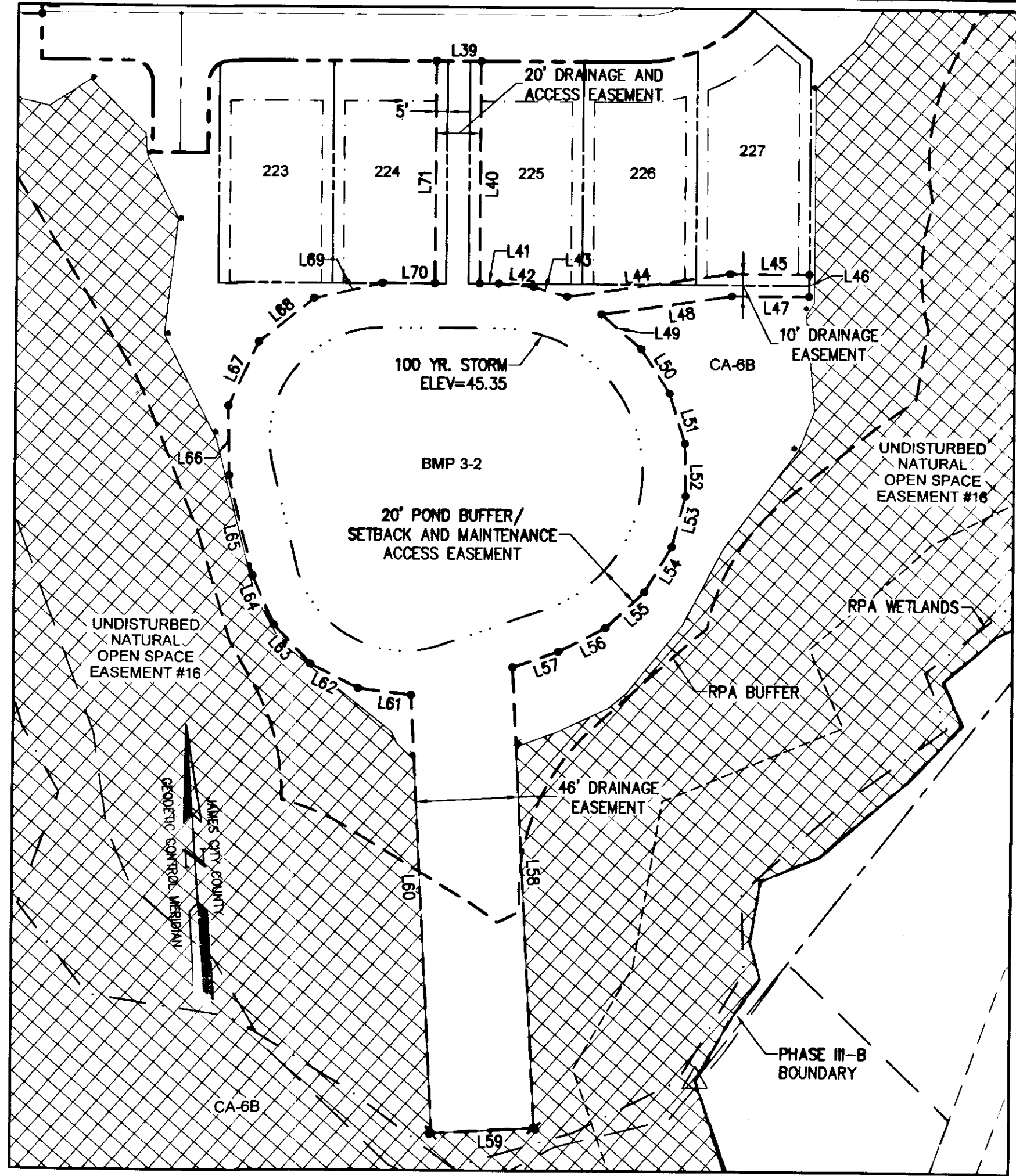
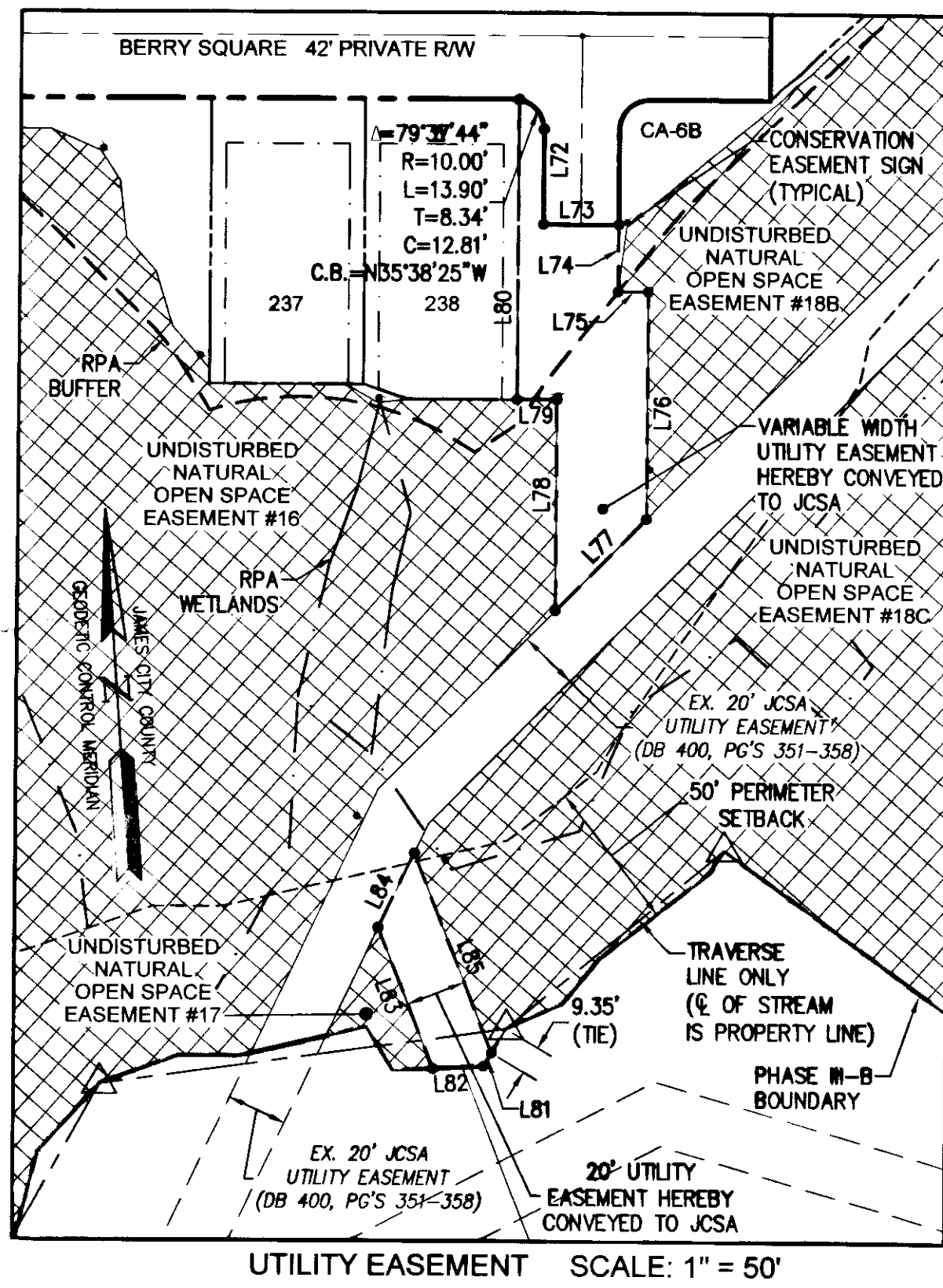


15004812

LINE	BEARING	LENGTH
L1	N86°38'01"E	24.67'
L2	S3°21'59"E	10.00'
L3	S86°38'01"W	9.27'
L4	S7°38'34"E	100.65'
L5	S64°21'08"W	55.17'
L6	N25°38'52"W	15.00'
L7	N64°21'08"E	44.27'
L8	N7°38'34"W	95.61'
L9	N3°21'59"W	5.28'
L10	S85°49'33"E	18.44'
L11	S39°44'41"W	25.16'
L12	S26°54'56"E	22.11'
L13	S6°57'05"E	18.92'
L14	S11°32'40"W	20.50'
L15	S31°03'11"W	20.35'
L16	S35°45'46"E	1.37'
L17	S85°49'33"E	167.10'
L18	S4°10'27"W	15.00'
L19	N85°49'33"W	173.18'
L20	N41°39'48"W	7.26'
L21	S52°54'57"W	61.38'
L22	S19°00'31"E	69.71'
L23	S85°49'33"E	24.45'
L24	S4°10'27"W	20.00'
L25	N85°49'33"W	37.64'
L26	N19°00'31"W	76.37'
L27	S70°59'29"W	88.67'
L28	S17°19'50"W	104.97'
L29	N72°40'10"W	15.00'

LINE	BEARING	LENGTH
L30	N17°19'50"E	112.56'
L31	N70°59'29"E	96.26'
L32	N19°00'31"W	78.14'
L33	N76°14'42"E	67.54'
L34	N82°46'16"E	13.75'
L35	S84°10'35"E	13.75'
L36	S71°07'26"E	13.75'
L37	S58°04'16"E	13.75'
L38	N39°44'41"E	12.89'
L39	S85°49'33"E	20.00'
L40	S4°10'27"W	100.00'
L41	S85°49'33"E	8.60'
L42	S80°55'58"E	15.69'
L43	S69°56'50"E	15.70'
L44	N85°55'22"E	74.10'
L45	S85°49'33"E	35.32'
L46	S4°10'27"W	10.00'
L47	N85°49'33"W	34.60'
L48	S85°55'22"W	59.24'
L49	S44°58'42"E	23.68'
L50	S28°59'16"E	23.68'
L51	S12°59'49"E	23.68'
L52	S2°59'37"W	23.68'
L53	S18°59'03"W	23.68'
L54	S34°58'29"W	23.68'
L55	S50°57'55"W	23.68'
L56	S66°57'22"W	23.68'
L57	S74°57'05"W	21.66'
L58	S1°05'44"W	207.76'

LINE	BEARING	LENGTH
L59	N88°54'16"W	46.00'
L60	N1°05'44"E	197.47'
L61	N78°37'37"W	24.04'
L62	N58°53'14"W	24.04'
L63	N39°08'52"W	24.04'
L64	N19°24'29"W	24.04'
L65	N9°32'18"W	46.53'
L66	N3°25'33"E	31.46'
L67	N29°21'14"E	31.46'
L68	N55°16'55"E	31.46'
L69	N81°24'21"E	31.43'
L70	S85°49'33"E	23.50'
L71	N4°10'27"E	100.00'
L72	S4°10'27"W	31.50'
L73	S85°49'33"E	25.00'
L74	S4°10'27"W	22.30'
L75	S85°49'33"E	10.00'
L76	S4°10'27"W	75.72'
L77	S48°26'54"W	42.97'
L78	N4°10'27"E	70.29'
L79	N85°49'33"W	13.20'
L80	N4°10'27"E	99.84'
L81	S34°56'58"W	5.19'
L82	N88°46'22"W	16.77'
L83	N17°15'11"W	50.48'
L84	N29°23'38"E	27.51'
L85	S17°15'11"E	71.50'

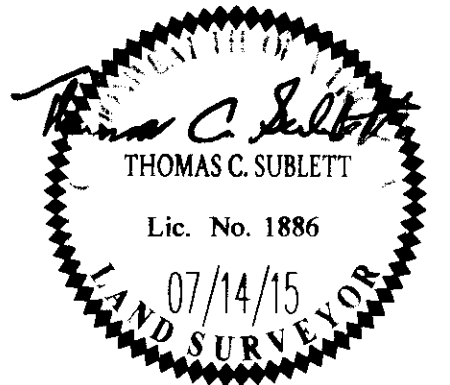


INDICATES AREA OF NATURAL OPEN SPACE TO REMAIN UNDISTURBED AND TO BE DEDICATED TO JAMES CITY COUNTY.
 SIGN FOR NATURAL OPEN SPACE EASEMENT (TYPICAL)

City of Williamsburg & County of James City
 Circuit Court: This PLAT was recorded on July 28, 2015
 at 2:19 AM PM, PG 1
 Document # 15004812
 BETSY B. WOOLRIDGE, CLERK
 ED Conner, Dep. Clerk

10 Large Sheet Plats Recorded herewith as # 15004812

RECORDS (LOT 239 THRU LOT 247)
 RMS
 RMS
 Revised By



NES
 CONSULTING ENGINEERS
 5248 Old Towne Road, Suite 1
 Williamsburg, Virginia 23188
 Phone: (757) 253-0040
 Fax: (757) 220-8994
 www.aesva.com
 Hampton Roads | Central Virginia | Middle Peninsula

AMENDED PLAT OF SUBDIVISION
 THE SETTLEMENT AT POWHATAN CREEK
 PHASE III-B
 LOTS 207-220, 223-231, 237-248, 265-271 AND
 COMMON AREA 6B
 BERKELEY DISTRICT JAMES CITY COUNTY VIRGINIA

Project Contacts: TCS
 Project Number: 9254-11B
 Scale: 1"=50' Date: 01/16/15
 Sheet Number
7 of 10