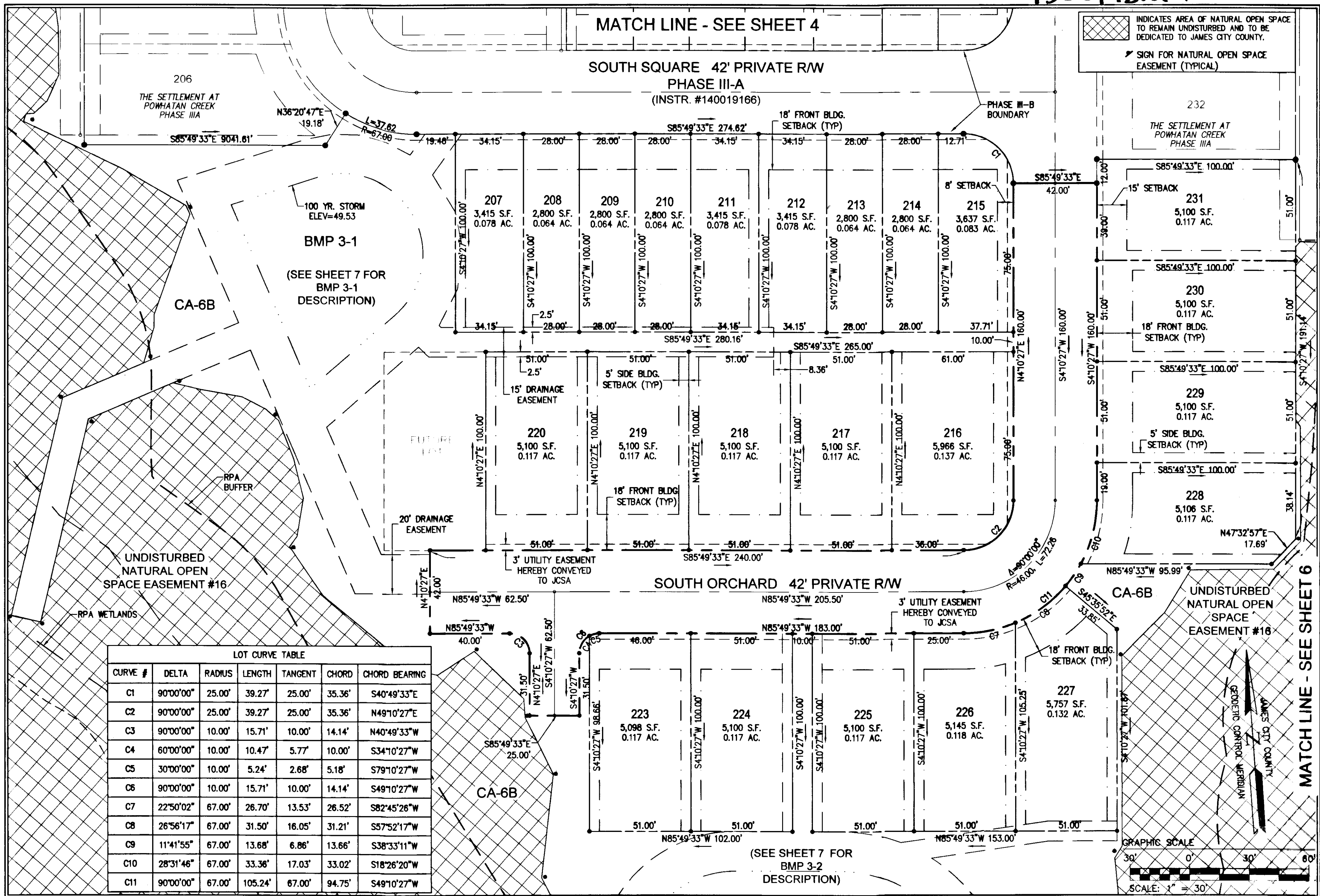


150014812



LOT CURVE TABLE

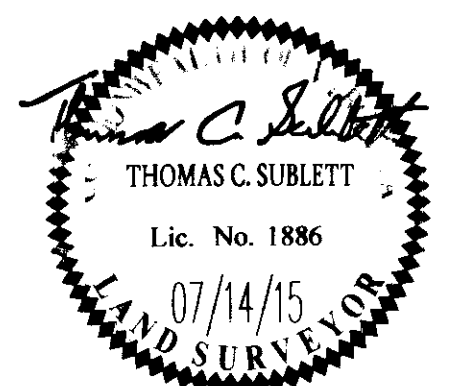
CURVE #	DELTA	RADIUS	LENGTH	TANGENT	CHORD	CHORD BEARING
C1	90°00'00"	25.00'	39.27'	25.00'	35.36'	S40°49'33"E
C2	90°00'00"	25.00'	39.27'	25.00'	35.36'	N49°10'27"E
C3	90°00'00"	10.00'	15.71'	10.00'	14.14'	N40°49'33"W
C4	60°00'00"	10.00'	10.47'	5.77'	10.00'	S34°10'27"W
C5	30°00'00"	10.00'	5.24'	2.68'	5.18'	S79°10'27"W
C6	90°00'00"	10.00'	15.71'	10.00'	14.14'	S49°10'27"W
C7	22°50'02"	67.00'	26.70'	13.53'	26.52'	S82°45'26"W
C8	26°56'17"	67.00'	31.50'	16.05'	31.21'	S57°52'17"W
C9	11°41'55"	67.00'	13.68'	6.86'	13.66'	S38°33'11"W
C10	28°31'46"	67.00'	33.36'	17.03'	33.02'	S18°26'20"W
C11	90°00'00"	67.00'	105.24'	67.00'	94.75'	S49°10'27"W

City of Williamsburg & County of James City  
 Circuit Court: This PLAT was recorded on July 28, 2015  
 at 2:19 AM (PM) PG PG  
 Document # 150014812  
 BETSY B. WOOLRIDGE, CLERK  
Ed Connor, Dep. Clerk

10 Large Scale Plats Recorded  
 herewith as 150014812

REVISIONS

No.	Date	Description	Revised By



5248 Olde Towne Road, Suite 1  
 Williamsburg, Virginia 23188  
 Phone: (757) 253-0040  
 Fax: (757) 220-8994  
 www.aesva.com

AMENDED PLAT OF SUBDIVISION  
 THE SETTLEMENT AT POWHATAN CREEK  
 PHASE III-B  
 LOTS 207-220, 223-231, 237-248, 265-271 AND  
 COMMON AREA 6B

BERKELEY DISTRICT      JAMES CITY COUNTY      VIRGINIA

Project Contacts: TCB  
 Project Number: 9254-11B  
 Scale: 1"=30'  
 Date: 01/16/15  
 Sheet Number: 5 of 10