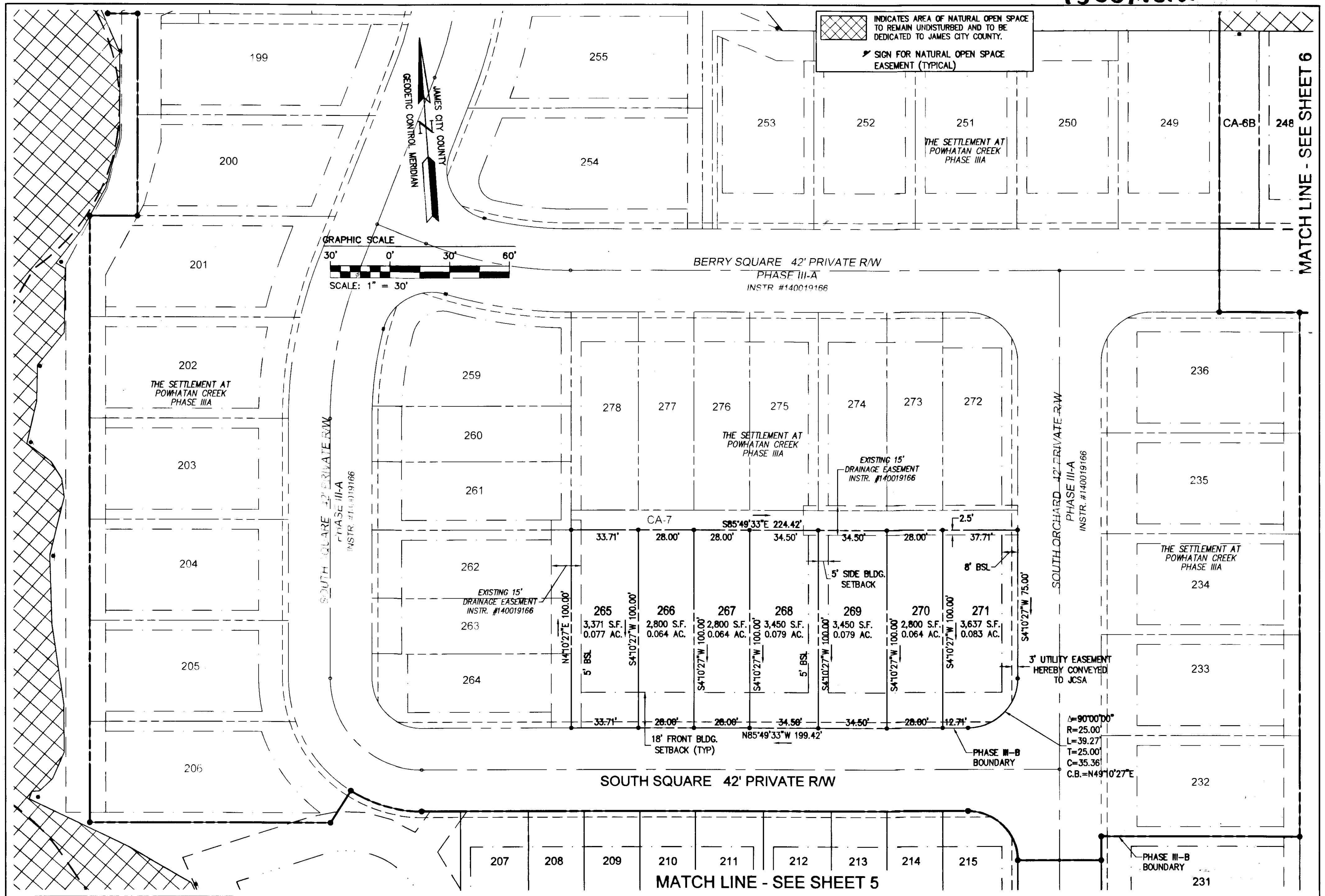
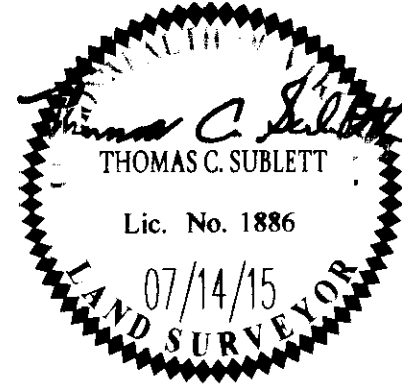


150014812



City of Williamsburg & County of James City Circuit Court: This PLAT was recorded on		10 Large Plats Recorded
at <u>July 28, 2015</u>		herewith as # <u>150014812</u>
Document # <u>150014812</u>	AMENDMENT PG	
BETSY B. WOOLRIDGE, CLERK		BACKS (LOT 239 THRU LOT 247)
<u>10 Control</u> Dep. Clerk		RMS
JUNTY COMMENTS		RMS
Rev.	Date	Description
		Revised By



AES
CONSULTING ENGINEERS
5248 Old Towne Road, Suite 1
Williamsburg, Virginia 23188
Phone: (757) 253-0040
Fax: (757) 220-8994
www.aesva.com
Hampton Roads | Central Virginia | Middle Peninsula

AMENDED PLAT OF SUBDIVISION
THE SETTLEMENT AT POWHATAN CREEK
PHASE III-B
LOTS 207-220, 223-231, 237-248, 265-271 AND
COMMON AREA 6B
BERKELEY DISTRICT JAMES CITY COUNTY VIRGINIA

Project Contacts:	TCB
Project Number:	9254-11B
Scale:	1"=30'
Date:	01/18/15
Sheet Number	4 of 10