

150014737

LEGEND:

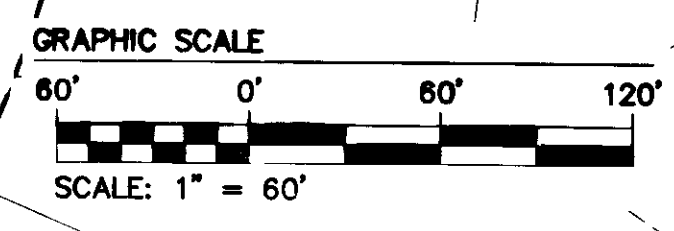
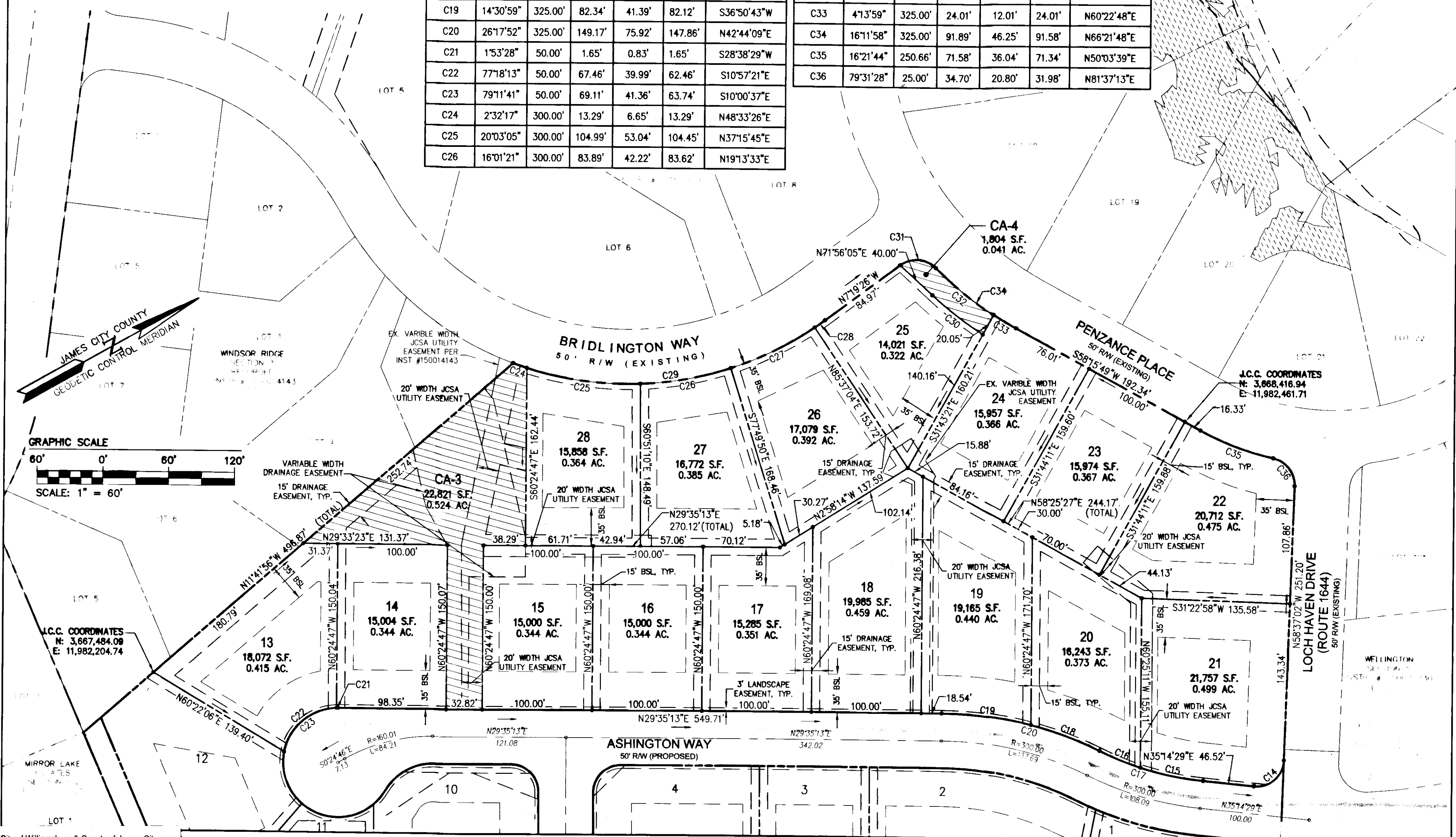


COMMON AREA 55,009 SF ± OR 1.26 AC ±

THIS SHEET ADDRESSES LOTS 13-28

CURVE TABLE						
CURVE #	DELTA	RADIUS	LENGTH	TANGENT	CHORD	CHORD BEARING
C14	93°51'32"	25.00'	40.95'	26.74'	36.53'	S11°41'16"E
C15	12°12'33"	275.00'	58.60'	29.41'	58.49'	S41°20'46"W
C16	8°26'02"	275.00'	40.48'	20.28'	40.44'	S51°40'04"W
C17	20°38'36"	275.00'	99.08'	50.08'	98.55'	S45°33'47"W
C18	11°46'52"	325.00'	66.83'	33.53'	66.71'	S49°59'39"W
C19	14°30'59"	325.00'	82.34'	41.39'	82.12'	S36°50'43"W
C20	26°17'52"	325.00'	149.17'	75.92'	147.86'	N42°44'09"E
C21	1°53'28"	50.00'	1.65'	0.83'	1.65'	S28°38'29"W
C22	77°18'13"	50.00'	67.46'	39.99'	62.46'	S10°57'21"E
C23	79°11'41"	50.00'	69.11'	41.36'	63.74'	S10°00'37"E
C24	2°32'17"	300.00'	13.29'	6.65'	13.29'	N48°33'26"E
C25	20°03'05"	300.00'	104.99'	53.04'	104.45'	N37°15'45"E
C26	16°01'21"	300.00'	83.89'	42.22'	83.62'	N19°13'33"E

CURVE TABLE						
CURVE #	DELTA	RADIUS	LENGTH	TANGENT	CHORD	CHORD BEARING
C27	16°18'22"	300.00'	85.38'	42.98'	85.09'	N3°03'41"E
C28	2°13'56"	300.00'	11.69'	5.84'	11.69'	N6°12'28"W
C30	9°41'00"	345.00'	58.31'	29.22'	58.24'	N67°05'36"E
C31	81°47'12"	25.00'	35.69'	21.65'	32.73'	S33°34'10"W
C32	11°57'59"	325.00'	67.88'	34.06'	67.75'	N68°28'47"E
C33	4°13'59"	325.00'	24.01'	12.01'	24.01'	N60°22'48"E
C34	16°11'58"	325.00'	91.89'	46.25'	91.58'	N66°21'48"E
C35	16°21'44"	250.66'	71.58'	36.04'	71.34'	N50°03'39"E
C36	79°31'28"	25.00'	34.70'	20.80'	31.98'	N81°37'13"E

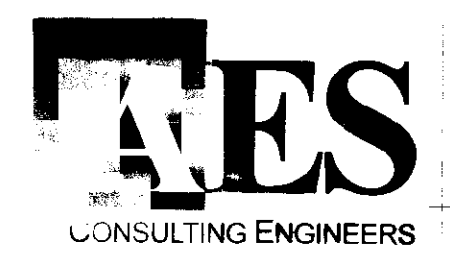
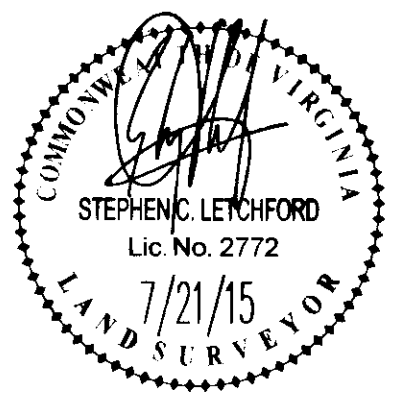


J.C.C. COORDINATES
N: 3,667,484.09
E: 11,982,204.74

J.C.C. COORDINATES
N: 3,668,416.94
E: 11,982,461.71

City of Williamsburg & County of James City
Circuit Court: This PLAT was recorded on
7-27-2015
at 2:52 PM, PG. 3
Document # 150014737
BETSY B. WOOLRIDGE, CLERK
Amy Stouff, Dep. Clerk

3 Large/Small Plat(s) Recorded
herewith as # 150014737



5248 Olde Towne Road, Suite 1
Williamsburg, Virginia 23188
Phone: (757) 253-0040
Fax: (757) 220-8994
www.aesva.com

PLAT OF SUBDIVISION
WINDSOR RIDGE
SECTION 4
LOTS 1-28 (28 LOTS)
BEING THE PROPERTY OF
BOCA LAND INVESTORS, L.L.C.
STONEHOUSE DISTRICT JAMES CITY COUNTY VIRGINIA

Project Contacts: SCL
Project Number: 8223-15
Scale: AS NOTED Date: 1/21/16
Sheet Number: 3 OF 3

Rev	Date	Description	Revised By
1	7/21/2015	REVISED PER P&Z PLANNING COMMENTS	LBA
1	4/8/2015	REVISED PER COMMENTS	LBA