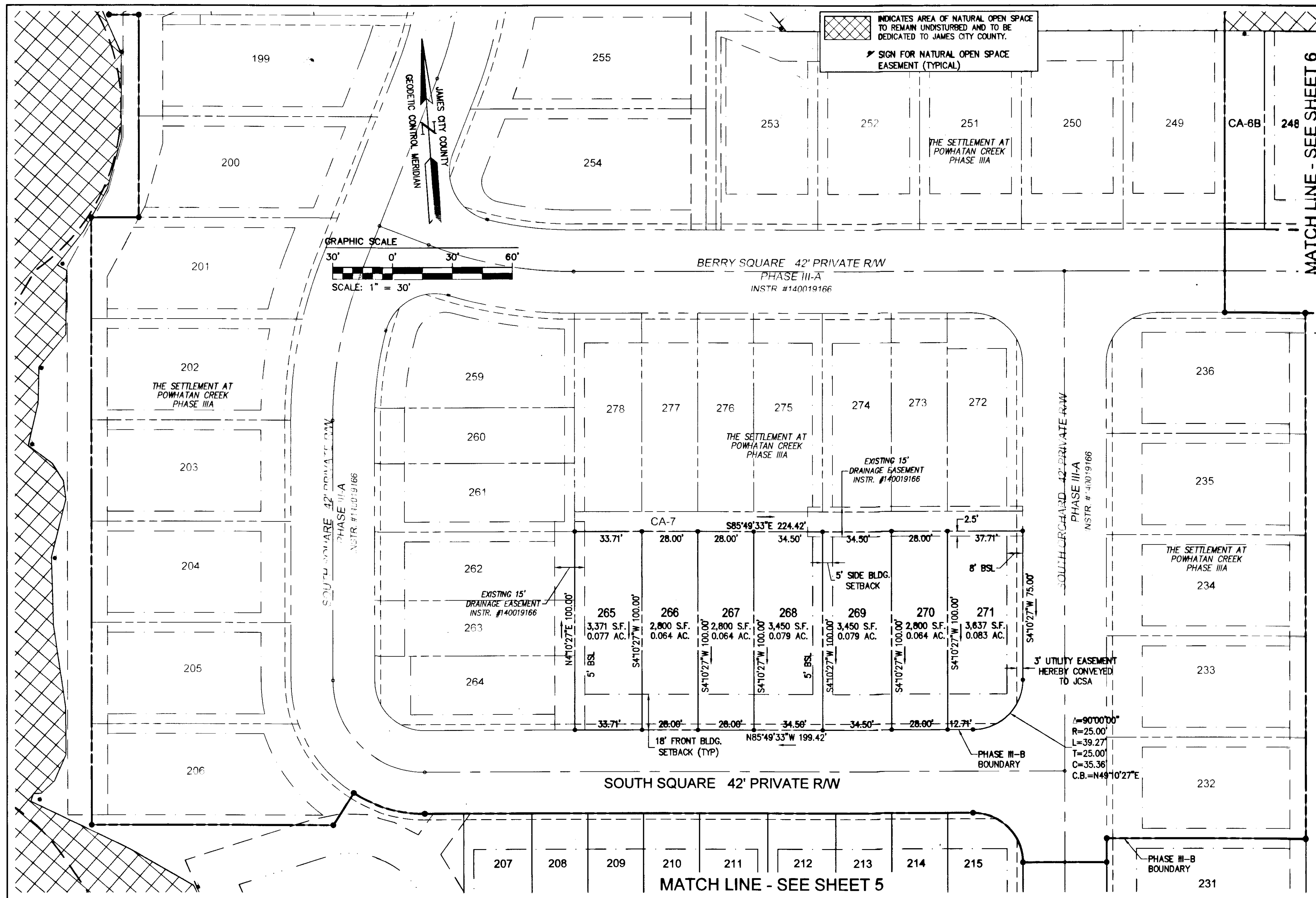
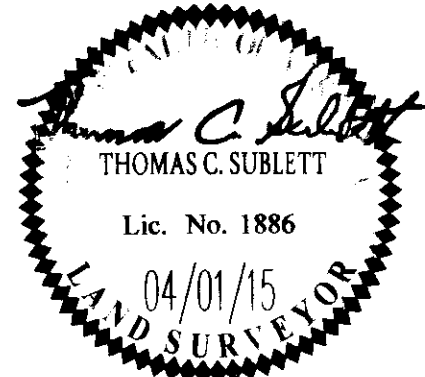


15001480



10 Large/Small Plat(s) Recorded		City of Williamsburg & County of James City	
herewith as # 15001480		Circuit Court: This PLAT was recorded on	
		June 10, 2015	
		at 2:26 AM/PM PB PG	
		Document # 15001480	
		BETSY B. WOOLRIDGE, CLERK	
		amy stover, Dep. Clerk	
1	04/01/15	REVISED PER CODE	
Rev.	Date	Descr.	



**AES**  
CONSULTING ENGINEERS  
5248 Olde Towne Road, Suite 1  
Williamsburg, Virginia 23188  
Phone: (757) 253-0040  
Fax: (757) 220-8994  
www.aesva.com  
Hampton Roads | Central Virginia | Middle Peninsula

PLAT OF SUBDIVISION  
**THE SETTLEMENT AT POWHATAN CREEK**  
PHASE III-B  
LOTS 207-220, 223-231, 237-248, 265-271 AND  
COMMON AREA 6B  
BERKELEY DISTRICT JAMES CITY COUNTY VIRGINIA

Project Contacts:	TGB
Project Number:	9254-11B
Scale:	Date:
1"=30'	01/16/15
Sheet Number	
4 of 10	