

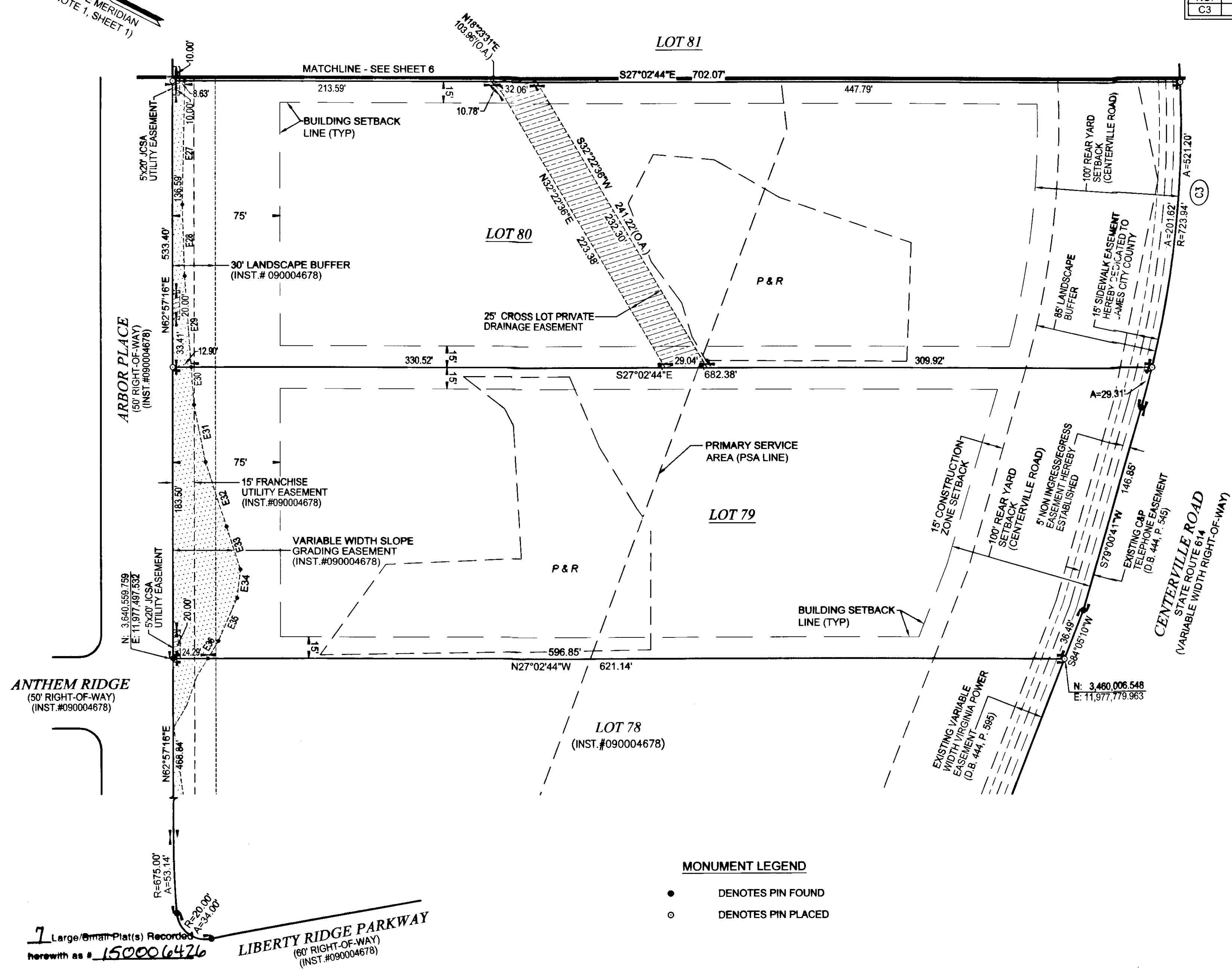
150006426

REFERENCE MERIDIAN
(SEE NOTE 1, SHEET 1)

CURVE TABLE						
NO.	RADIUS	DELTA	ARC	TANGENT	CHORD	CH. BEARING
C3	723.94'	41°15'01"	521.20'	272.47'	510.02'	S58°15'08"W

TABLE OF AREAS		
LOT	SQUARE FEET	ACRES
79	132,980	3.053
80	139,385	3.200

EASEMENT LINE TABLE		
#	BEARING	DIST.
E27	S64°09'29"W	86.41'
E28	S61°08'43"W	50.02'
E29	S58°54'24"W	63.77'
E30	S58°54'24"W	26.48'
E31	S51°37'15"W	40.80'
E32	S44°46'17"W	47.37'
E33	S45°11'12"W	31.50'
E34	S69°34'42"W	20.13'
E35	S86°29'50"W	32.72'
E36	N85°17'38"W	14.24'



MONUMENT LEGEND

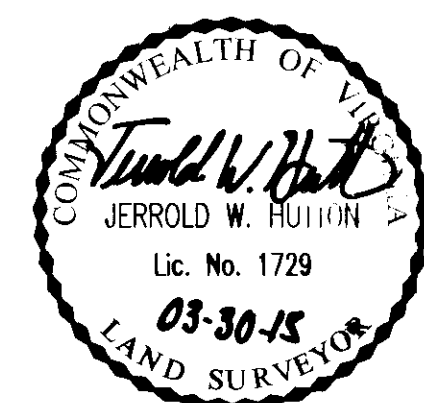
- DENOTES PIN FOUND
- DENOTES PIN PLACED

HATCH LEGEND

- [Dotted Hatch] DENOTES VARIABLE WIDTH SLOPE GRADING EASEMENT
- [Diagonal Hatch] DENOTES 5'x20' JCSA UTILITY EASEMENT
- [Cross-hatch] DENOTES DRAINAGE EASEMENT

SEPTIC DRAINFIELD LEGEND

- [Box with 'P'] PRIMARY DRAINFIELD (SEE NOTE 8, SHEET 1)
- [Box with 'R'] RESERVE DRAINFIELD (SEE NOTE 8, SHEET 1)

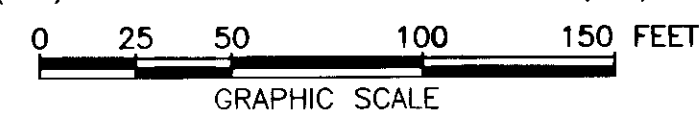


SUBDIVISION PLAT
OF
LIBERTY RIDGE
BEING LOTS 79-86, 111 & 112 & OPEN SPACE #5,
SECTION 1-B
JAMES CITY COUNTY, VIRGINIA

SCALE: 1"=50' FEBRUARY 13, 2015
REVISED: MARCH 23, 2015

ROUSE-SIRINE ASSOCIATES, LTD.
LAND SURVEYORS, MAPPING CONSULTANTS & S.U.E. QUALITY LEVELS "A-D"
www.rouse-sirine.com

333 OFFICE SQUARE LANE 362 McLAWS CIRCLE, SUITE 1
VIRGINIA BEACH, VIRGINIA 23462 WILLIAMSBURG, VIRGINIA 23185
TEL: (757) 490-2300 TEL: (757) 903-4695
FAX: (757) 499-9136 FAX: (757) 903-4469



COMMONWEALTH OF VIRGINIA
CITY OF WILLIAMSBURG & COUNTY OF JAMES CITY CIRCUIT COURT.
THIS 10 DAY OF April, 2015.
THE PLAT SHOWN HEREON WAS PRESENTED AND ADMITTED TO
THE RECORD AS THE LAW DIRECTS. AT 3:15 AM P.M.
INSTRUMENT # 150006426

TESTE: Elisabetho Conner
BETSY B. WOOLRIDGE, CLERK