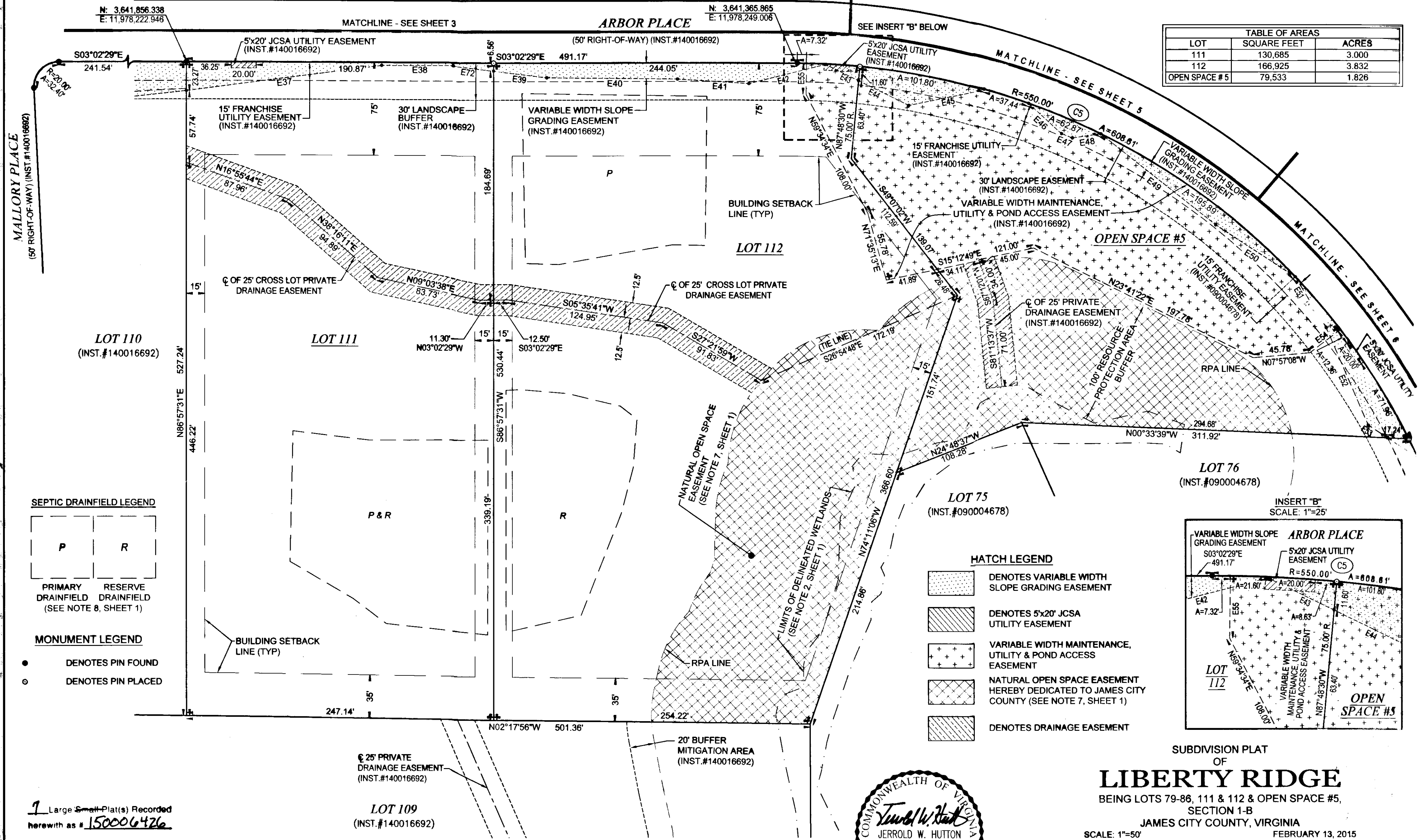


150006426

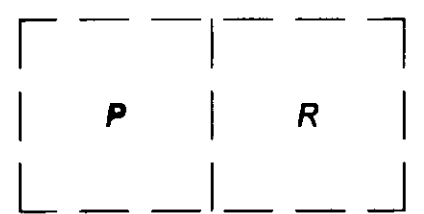
REFERENCE MERIDIAN
(SEE NOTE 1, SHEET 1)

CURVE TABLE						
NO.	RADIUS	DELTA	ARC	TANGENT	CHORD	CH. BEARING
C5	550.00'	63°24'06"	608.61'	339.69'	580.03'	S31°16'33"W

TABLE OF AREAS		
LOT	SQUARE FEET	ACRES
111	130,685	3.000
112	166,925	3.832
OPEN SPACE #5	79,533	1.826



SEPTIC DRAINFIELD LEGEND



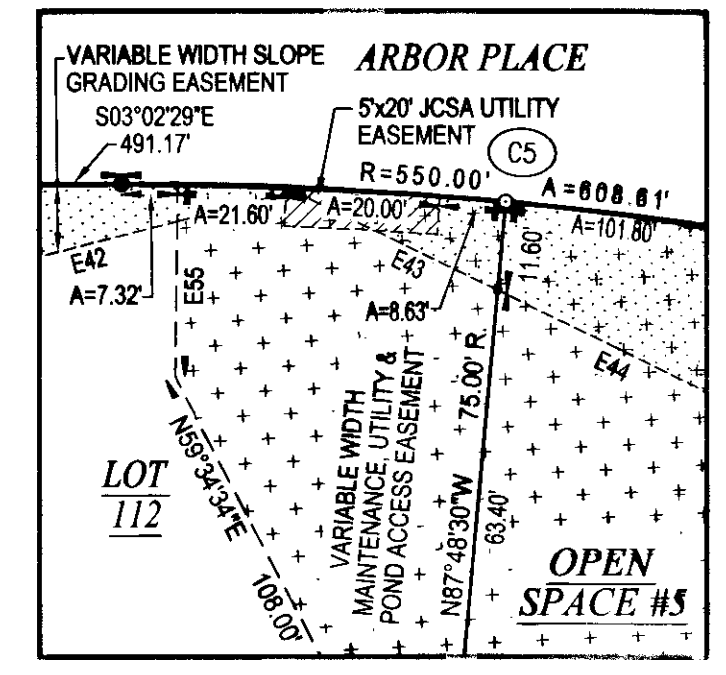
PRIMARY DRAINFIELD (SEE NOTE 8, SHEET 1)
RESERVE DRAINFIELD

MONUMENT LEGEND

- DENOTES PIN FOUND
- DENOTES PIN PLACED

HATCH LEGEND

- [Stippled Hatch] DENOTES VARIABLE WIDTH SLOPE GRADING EASEMENT
- [Diagonal Hatch] DENOTES 5'x20' JCSA UTILITY EASEMENT
- [Cross-hatch] VARIABLE WIDTH MAINTENANCE, UTILITY & POND ACCESS EASEMENT
- [Dotted Hatch] NATURAL OPEN SPACE EASEMENT HEREBY DEDICATED TO JAMES CITY COUNTY (SEE NOTE 7, SHEET 1)
- [Horizontal Hatch] DENOTES DRAINAGE EASEMENT



1 Large Small Plat(s) Recorded
herewith as # 150006426

LOT 109
(INST.#140016692)

EASEMENT LINE TABLE								
#	BEARING	DIST.	#	BEARING	DIST.	#	BEARING	DIST.
E37	S10°34'27"E	158.44'	E44	S22°57'26"W	44.88'	E51	S55°43'32"W	48.13'
E38	S35°02'29"E	57.66'	E45	S14°48'41"E	61.96'	E52	S63°44'33"W	85.86'
E39	S04°06'38"W	42.98'	E46	S39°51'51"W	36.05'	E53	S30°12'01"W	18.57'
E40	S02°28'01"E	105.01'	E47	S18°12'49"W	9.35'	E54	N40°30'28"W	30.94'R
E41	S00°34'59"W	57.55'	E48	S11°28'23"E	22.96'	E55	N87°43'16"E	25.00'R
E42	S17°22'25"E	63.49'	E49	S35°34'30"W	118.43'	E72	S04°06'38"W	32.64'
E43	S22°57'26"W	29.55'	E50	S30°09'44"W	76.63'			

COMMONWEALTH OF VIRGINIA
CITY OF WILLIAMSBURG & COUNTY OF JAMES CITY CIRCUIT COURT.
THIS 10 DAY OF April, 2015.
THE PLAT SHOWN HEREON WAS PRESENTED AND ADMITTED TO
THE RECORD AS THE LAW DIRECTS, AT 3:15 AM (PM)
INSTRUMENT # 150006426

TESTE: *Elizabeth O'Connor*
BETSY B. WOOLRIDGE, CLERK



SUBDIVISION PLAT
OF
LIBERTY RIDGE
BEING LOTS 79-86, 111 & 112 & OPEN SPACE #5,
SECTION 1-B
JAMES CITY COUNTY, VIRGINIA

SCALE: 1"=50' FEBRUARY 13, 2015
REVISED: MARCH 23, 2015

ROUSE-SIRINE ASSOCIATES, LTD.
LAND SURVEYORS, MAPPING CONSULTANTS & S.U.E. QUALITY LEVELS "A-D"
www.rouse-sirine.com

333 OFFICE SQUARE LANE 362 McLAWS CIRCLE, SUITE 1
VIRGINIA BEACH, VIRGINIA 23462 WILLIAMSBURG, VIRGINIA 23185
TEL: (757) 490-2300 TEL: (757) 903-4695
FAX: (757) 499-9138 FAX: (757) 903-4469

