

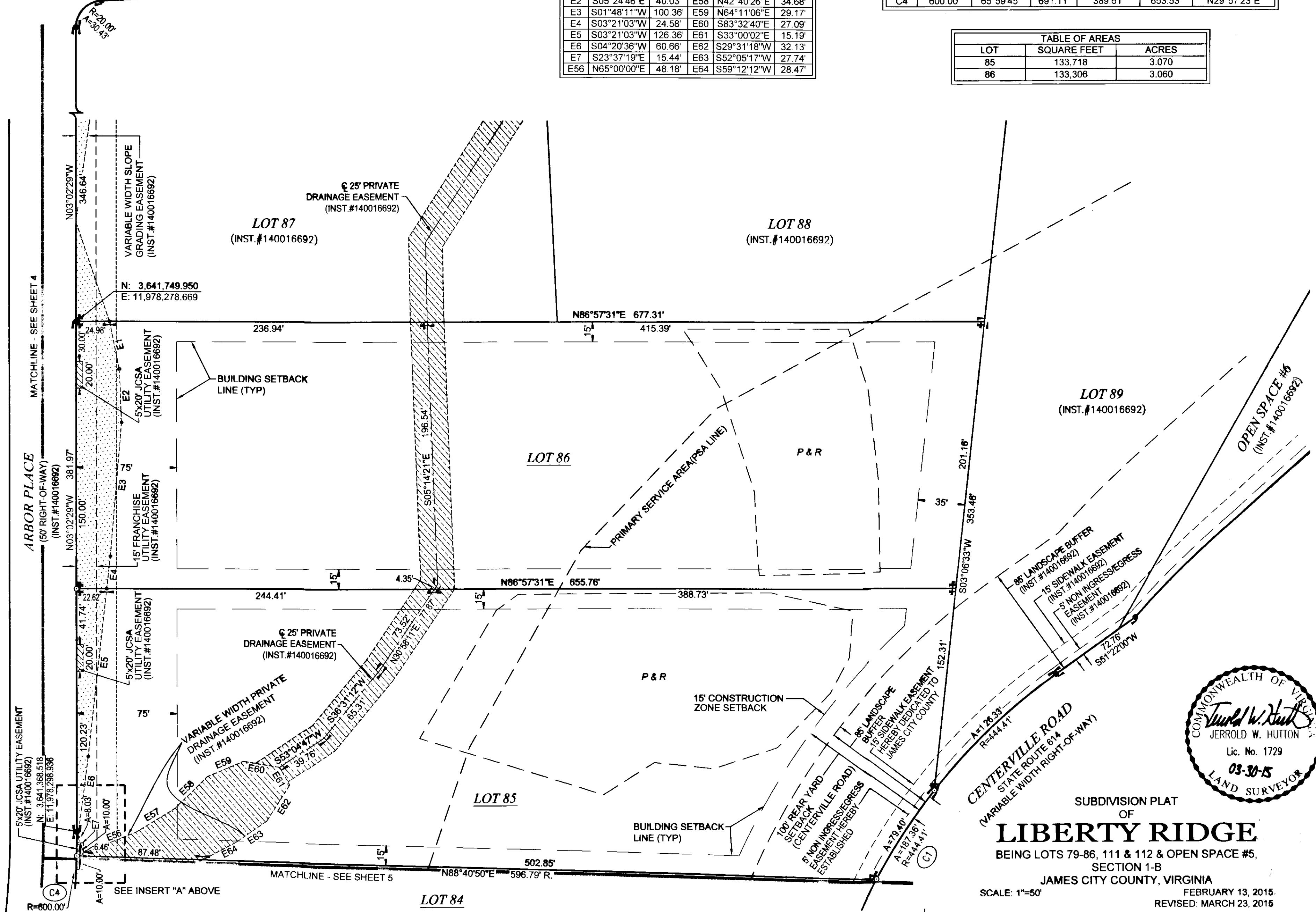
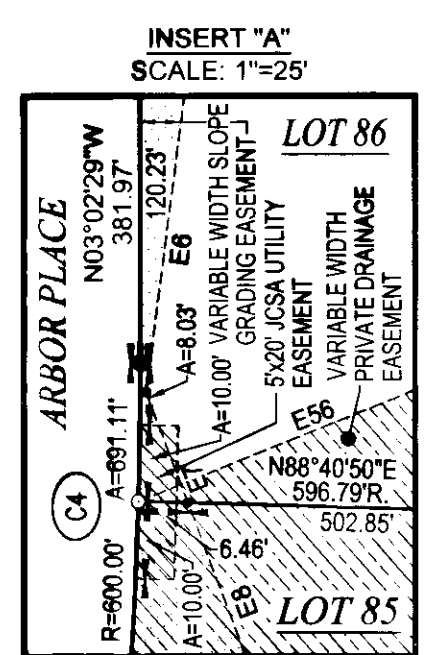
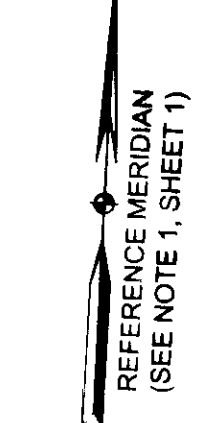
15 0006426

MALLORY PLACE
(60' RIGHT-OF-WAY)
(INST.#140016692)

EASEMENT LINE TABLE					
#	BEARING	DIST.	#	BEARING	DIST.
E1	S14°28'20"E	36.29'	E57	N55°21'56"E	33.38'
E2	S05°24'46"E	40.03'	E58	N42°40'26"E	34.68'
E3	S01°48'11"W	100.36'	E59	N64°11'06"E	29.17'
E4	S03°21'03"W	24.58'	E60	S83°32'40"E	27.09'
E5	S03°21'03"W	126.36'	E61	S33°00'02"E	15.19'
E6	S04°20'36"W	60.66'	E62	S29°31'18"W	32.13'
E7	S23°37'19"E	15.44'	E63	S52°05'17"W	27.74'
E56	N65°00'00"E	48.18'	E64	S59°12'12"W	28.47'

CURVE TABLE						
NO.	RADIUS	DELTA	ARC	TANGENT	CHORD	CH. BEARING
C1	444.41'	24°09'18"	187.36'	95.09'	185.97'	S23°00'08"W
C4	600.00'	65°59'45"	691.11'	389.61'	653.53'	N29°57'23"E

TABLE OF AREAS		
LOT	SQUARE FEET	ACRES
85	133,718	3.070
86	133,306	3.060



- MONUMENT LEGEND**
- DENOTES PIN FOUND
 - DENOTES PIN PLACED

7 Large Small Plat(s) Recorded herewith as # 150006426

- HATCH LEGEND**
- DENOTES VARIABLE WIDTH SLOPE GRADING EASEMENT
 - DENOTES 5x20' JCSA UTILITY EASEMENT
 - DENOTES CROSS LOT DRAINAGE EASEMENT

- SEPTIC DRAINFIELD LEGEND**
- PRIMARY DRAINFIELD
 - RESERVE DRAINFIELD (SEE NOTE 8, SHEET 1)



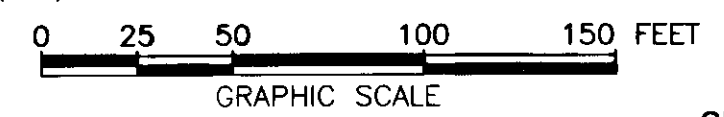
SUBDIVISION PLAT OF
LIBERTY RIDGE

BEING LOTS 79-86, 111 & 112 & OPEN SPACE #5, SECTION 1-B

JAMES CITY COUNTY, VIRGINIA
SCALE: 1"=50' FEBRUARY 13, 2015
REVISED: MARCH 23, 2015

ROUSE-SIRINE ASSOCIATES, LTD.
LAND SURVEYORS, MAPPING CONSULTANTS & S.U.E. QUALITY LEVELS "A-D"
www.rouse-sirine.com

333 OFFICE SQUARE LANE VIRGINIA BEACH, VIRGINIA 23185
362 McLAWS CIRCLE, SUITE 1 VIRGINIA BEACH, VIRGINIA 23185
TEL: (757) 490-2300 TEL: (757) 903-4695
FAX: (757) 499-9136 FAX: (757) 903-4469



COMMONWEALTH OF VIRGINIA
CITY OF WILLIAMSBURG AND COUNTY OF JAMES CITY CIRCUIT COURT.
THIS 10 DAY OF April, 2015.
THE PLAT SHOWN HEREON WAS PRESENTED AND ADMITTED TO THE RECORD AS THE LAW DIRECTS, AT 3:15 AM (PM)
INSTRUMENT # 150006426

TESTE: Elizabeth Conner
BETSY B. WOOLRIDGE, CLERK