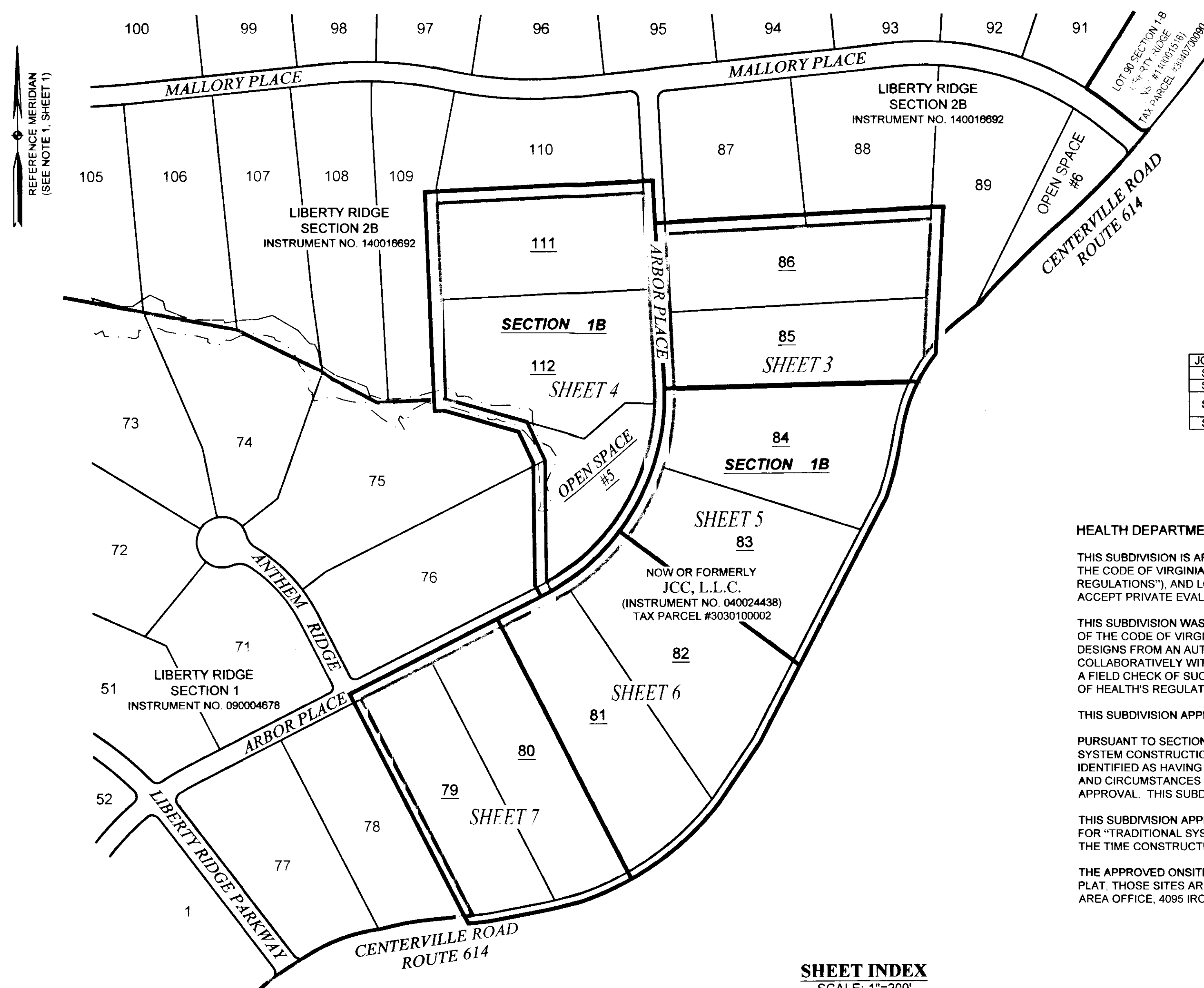


15000426

THIS DRIVEWAY CULVERT SCHEDULE HAS BEEN ADDED TO THIS PLAT AT THE REQUEST OF JAMES CITY COUNTY. THE REQUIRED CULVERT DIAMETER WAS TAKEN FROM SUBDIVISION CONSTRUCTION PLANS FOR LIBERTY RIDGE PROJECT BY KIMLEY-HORN AND ASSOCIATES, INC. THIS SURVEYOR ASSUMES NO LIABILITY FOR CULVERT SIZE CALCULATIONS.

DRIVEWAY CULVERT SCHEDULE	
LOT	REQUIRED CULVERT DIAMETER
79	15"
80	18"
81	15"
82	15"
83	15"
84	24"
85	24"
86	24"
111	15"
112	15"

SUMMARY OF PLATTED LOTS					
JCC CASE NO.	SECTION NO.	LOT NO.	NO. OF LOTS	OPEN SPACE	OPEN SPACE AREA
S-0117-2005	1-B	1, 43-61 & 71-78	28	NO. 1 & 1A	0.328 ACRE
S-0030-2013	1-B	90	1	N/A	0
S-0017-2014	1-B	87-89 & 91-95	23	NO. 6	1.183 ACRE
S-0011-2015	1-B	96-110	10	NO. 5	1.826 ACRE



HEALTH DEPARTMENT SUBDIVISION APPROVAL STATEMENT

THIS SUBDIVISION IS APPROVED FOR INDIVIDUAL ONSITE SEWAGE SYSTEMS IN ACCORDANCE WITH THE PROVISIONS OF THE CODE OF VIRGINIA, AND THE SEWAGE HANDLING AND DISPOSAL REGULATIONS (12 VAC 5-610-10 ET SEQ., "THE REGULATIONS"), AND LOCAL ORDINANCES IF THE LOCALITY HAS AUTHORIZED THE LOCAL HEALTH DEPARTMENT TO ACCEPT PRIVATE EVALUATIONS FOR COMPLIANCE WITH LOCAL ORDINANCES.

THIS SUBDIVISION WAS SUBMITTED TO THE LOCAL HEALTH DEPARTMENT FOR REVIEW PURSUANT TO SECTION 32.1-163.5 OF THE CODE OF VIRGINIA WHICH REQUIRES THE HEALTH DEPARTMENT TO ACCEPT PRIVATE SOIL EVALUATIONS AND DESIGNS FROM AN AUTHORIZED ONSITE SOIL EVALUATOR (AOSE) OR A PROFESSIONAL ENGINEER WORKING COLLABORATIVELY WITH AN AOSE FOR RESIDENTIAL DEVELOPMENT. THE DEPARTMENT IS NOT REQUIRED TO PERFORM A FIELD CHECK OF SUCH EVALUATIONS. THIS SUBDIVISION WAS CERTIFIED AS BEING IN COMPLIANCE WITH THE BOARD OF HEALTH'S REGULATIONS BY: HAROLD L. MATHEWS, AOSE#16 PH. 1-800-287-9604.

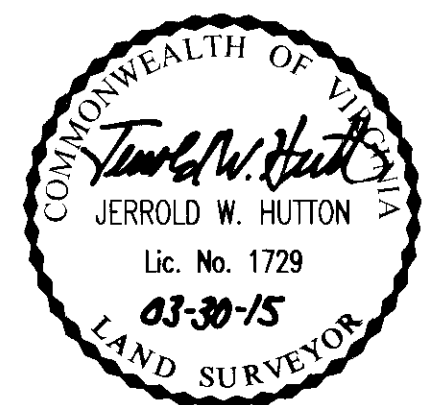
THIS SUBDIVISION APPROVAL IS ISSUED IN COMPLIANCE WITH THAT CERTIFICATION.

PURSUANT TO SECTION 360 OF "THE REGULATIONS", THIS APPROVAL IS NOT AN ASSURANCE THAT SEWAGE DISPOSAL SYSTEM CONSTRUCTION PERMITS WILL BE ISSUED ON ANY LOT IN THE SUBDIVISION UNLESS THAT LOT IS SPECIFICALLY IDENTIFIED AS HAVING AN APPROVED SITE FOR AN ONSITE SEWAGE DISPOSAL SYSTEM, AND UNLESS ALL CONDITIONS AND CIRCUMSTANCES ARE PRESENT AT THE TIME OF APPLICATION FOR A PERMIT AS ARE PRESENT AT THE TIME OF THIS APPROVAL. THIS SUBDIVISION MAY CONTAIN LOTS THAT DO NOT HAVE APPROVED SITES FOR ONSITE SEWAGE SYSTEMS.

THIS SUBDIVISION APPROVAL IS ISSUED IN RELIANCE UPON THE CERTIFICATION THAT APPROVED LOTS ARE SUITABLE FOR "TRADITIONAL SYSTEMS" UNLESS OTHERWISE STATED. HOWEVER, ACTUAL SYSTEM DESIGN MAY BE DIFFERENT AT THE TIME CONSTRUCTION PERMITS ARE ISSUED.

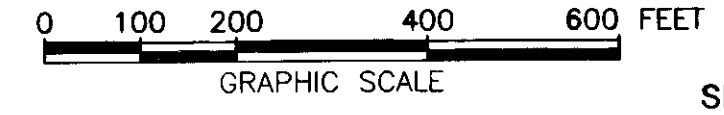
THE APPROVED ONSITE SEWAGE SYSTEM SITES ARE SHOWN ON THIS PLAT. IF SAID SITES ARE NOT SHOWN ON THIS PLAT, THOSE SITES ARE SHOWN ON A SEPARATE PLAT ON FILE WITH THE PENINSULA HEALTH DISTRICT, WILLIAMSBURG AREA OFFICE, 4095 IRONBOUND ROAD, WILLIAMSBURG, VA 23188.

SHEET INDEX
SCALE: 1"=200'



SUBDIVISION PLAT
OF
LIBERTY RIDGE
BEING LOTS 79-86, 111 & 112 & OPEN SPACE #5,
SECTION 1-B
JAMES CITY COUNTY, VIRGINIA

SCALE: 1"=200' FEBRUARY 13, 2015
REVISED: MARCH 23, 2015
ROUSE-SIRINE ASSOCIATES, LTD.
LAND SURVEYORS, MAPPING CONSULTANTS & S.U.E. QUALITY LEVELS "A-D"
www.rouse-sirine.com
333 OFFICE SQUARE LANE 362 McLAWS CIRCLE, SUITE 1
VIRGINIA BEACH, VIRGINIA 23462 WILLIAMSBURG, VIRGINIA 23185
TEL: (757) 490-2300 TEL: (757) 903-4695
FAX: (757) 499-9136 FAX: (757) 903-4669



City of Williamsburg & County of James City
Circuit Court: This PLAT was recorded on
April 10, 2015
at 3:15 AM/PM, PG
Document # 15000426
BETSY B. WOOLRIDGE, CLERK
Elizabeth Connors, Dep. Clerk

2 Large/Small Plat(s) Recorded
herewith as # 15000426