

CURVE TABLE						
CURVE #	DELTA	RADIUS	LENGTH	TANGENT	CHORD	CHORD BEARING
C1	19°35'12"	100.00'	34.19'	17.26'	34.02'	N65°16'50"E
C2	12°25'43"	1637.44'	355.20'	178.30'	354.50'	N74°09'17"W

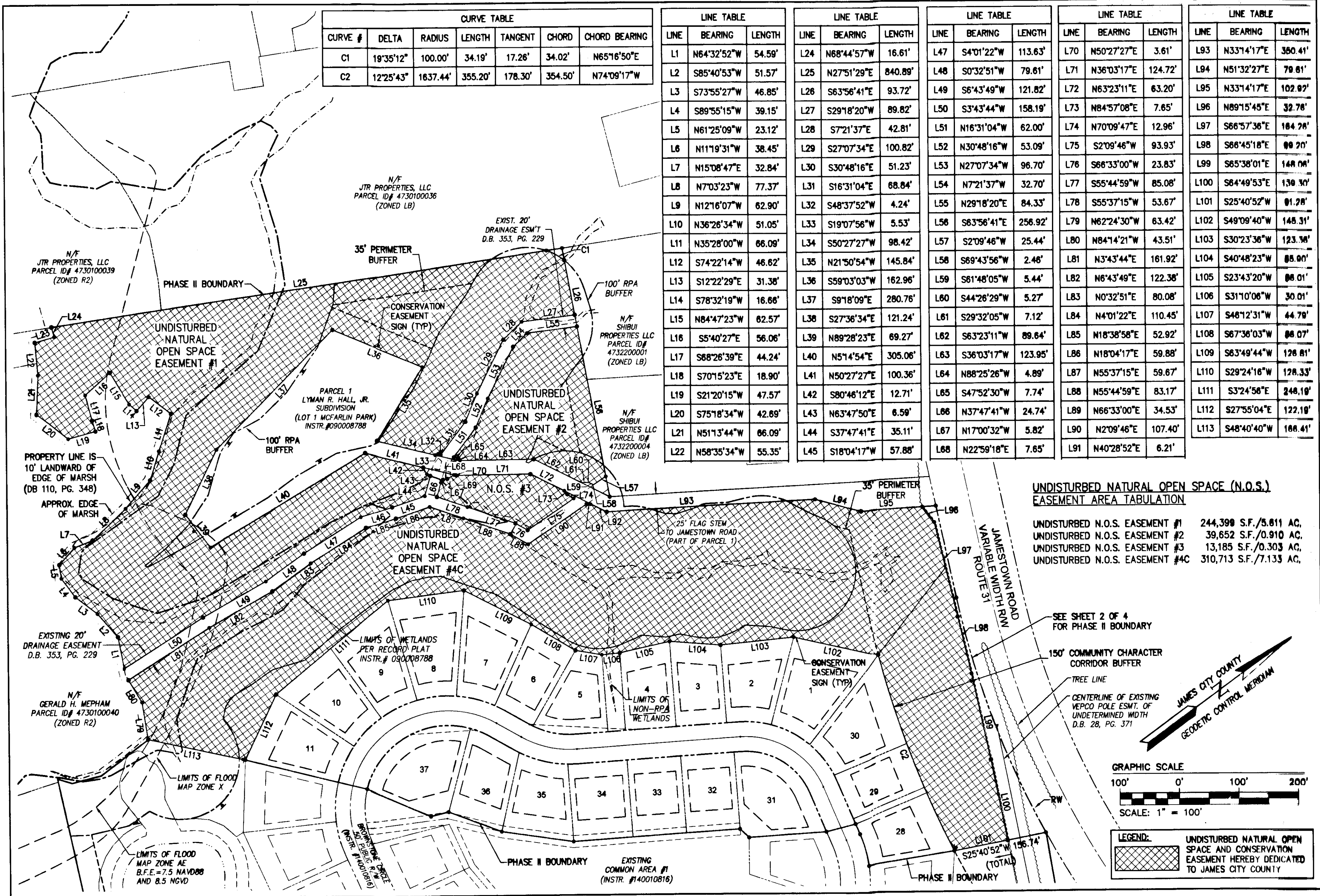
LINE TABLE		
LINE	BEARING	LENGTH
L1	N64°32'52"W	54.59'
L2	S85°40'53"W	51.57'
L3	S73°55'27"W	46.85'
L4	S89°55'15"W	39.15'
L5	N61°25'09"W	23.12'
L6	N11°19'31"W	38.45'
L7	N15°08'47"E	32.84'
L8	N7°03'23"W	77.37'
L9	N12°16'07"W	62.90'
L10	N36°26'34"W	51.05'
L11	N35°28'00"W	66.09'
L12	S74°22'14"W	46.62'
L13	S12°22'29"E	31.38'
L14	S78°32'19"W	16.66'
L15	N84°47'23"W	62.57'
L16	S5°40'27"E	56.06'
L17	S68°26'39"E	44.24'
L18	S70°15'23"E	18.90'
L19	S21°20'15"W	47.57'
L20	S75°18'34"W	42.89'
L21	N51°13'44"W	66.09'
L22	N58°35'34"W	55.35'

LINE TABLE		
LINE	BEARING	LENGTH
L24	N68°44'57"W	16.61'
L25	N27°51'29"E	840.89'
L26	S63°56'41"E	93.72'
L27	S29°18'20"W	89.82'
L28	S7°21'37"E	42.81'
L29	S27°07'34"E	100.82'
L30	S30°48'16"E	51.23'
L31	S16°31'04"E	68.84'
L32	S48°37'52"W	4.24'
L33	S19°07'56"W	5.53'
L34	S50°27'27"W	98.42'
L35	N21°50'54"W	145.84'
L36	S59°03'03"W	162.96'
L37	S9°18'09"E	280.76'
L38	S27°36'34"E	121.24'
L39	N89°28'23"E	69.27'
L40	N51°4'54"E	305.06'
L41	N50°27'27"E	100.36'
L42	S80°46'12"E	12.71'
L43	N63°47'50"E	6.59'
L44	S37°47'41"E	35.11'
L45	S18°04'17"W	57.88'

LINE TABLE		
LINE	BEARING	LENGTH
L47	S4°01'22"W	113.63'
L48	S0°32'51"W	79.61'
L49	S6°43'49"W	121.82'
L50	S3°43'44"W	158.19'
L51	N16°31'04"W	62.00'
L52	N30°48'16"W	53.09'
L53	N27°07'34"W	96.70'
L54	N7°21'37"W	32.70'
L55	N29°18'20"E	84.33'
L56	S63°56'41"E	256.92'
L57	S2°09'46"W	25.44'
L58	S69°43'56"W	2.46'
L59	S61°48'05"W	5.44'
L60	S44°26'29"W	5.27'
L61	S29°32'05"W	7.12'
L62	S63°23'11"W	89.64'
L63	S36°03'17"W	123.95'
L64	N88°25'26"W	4.89'
L65	S47°52'30"W	7.74'
L66	N37°47'41"W	24.74'
L67	N17°00'32"W	5.82'
L68	N22°59'18"E	7.65'

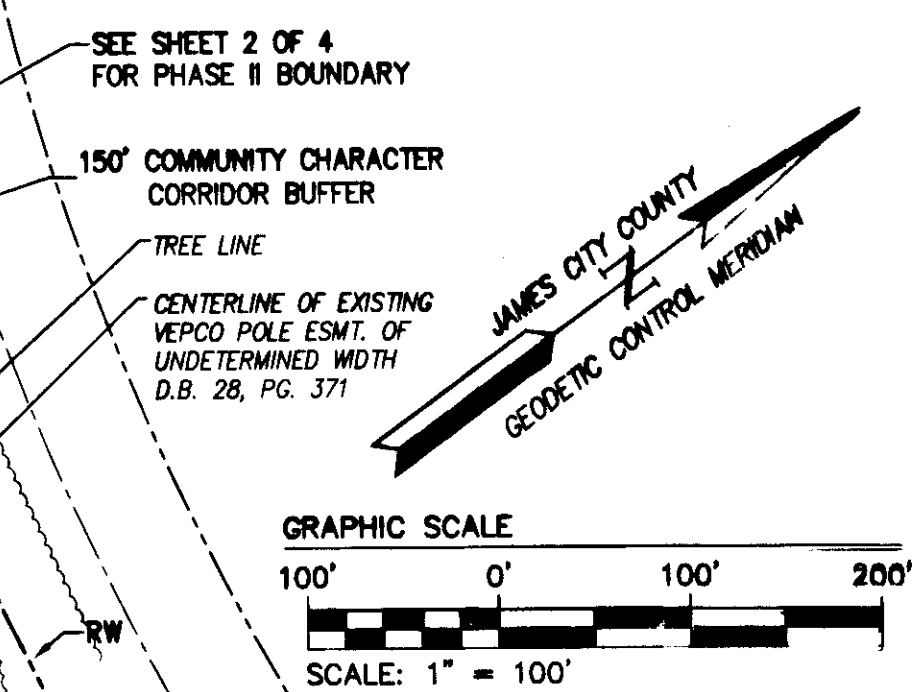
LINE TABLE		
LINE	BEARING	LENGTH
L70	N50°27'27"E	3.61'
L71	N36°03'17"E	124.72'
L72	N63°23'11"E	63.20'
L73	N84°57'08"E	7.65'
L74	N70°09'47"E	12.96'
L75	S2°09'46"W	93.93'
L76	S66°33'00"W	23.83'
L77	S55°44'59"W	85.08'
L78	S55°37'15"W	53.67'
L79	N62°24'30"W	63.42'
L80	N84°14'21"W	43.51'
L81	N3°43'44"E	161.92'
L82	N6°43'49"E	122.38'
L83	N0°32'51"E	80.08'
L84	N4°01'22"E	110.45'
L85	N18°38'58"E	52.92'
L86	N18°04'17"E	59.88'
L87	N55°37'15"E	59.67'
L88	N55°44'59"E	83.17'
L89	N66°33'00"E	34.53'
L90	N2°09'46"E	107.40'
L91	N40°28'52"E	6.21'

LINE TABLE		
LINE	BEARING	LENGTH
L93	N33°14'17"E	350.41'
L94	N51°32'27"E	79.61'
L95	N33°14'17"E	102.09'
L96	N89°15'45"E	32.78'
L97	S66°57'36"E	164.26'
L98	S66°45'18"E	89.20'
L99	S65°38'01"E	148.06'
L100	S64°49'53"E	139.30'
L101	S25°40'52"W	81.28'
L102	S49°09'40"W	148.31'
L103	S30°23'36"W	123.38'
L104	S40°48'23"W	85.90'
L105	S23°43'20"W	86.01'
L106	S31°10'06"W	30.01'
L107	S46°12'31"W	44.79'
L108	S67°36'03"W	86.07'
L109	S63°49'44"W	126.81'
L110	S29°24'16"W	126.33'
L111	S3°24'56"E	246.18'
L112	S27°55'04"E	122.18'
L113	S48°40'40"W	186.41'

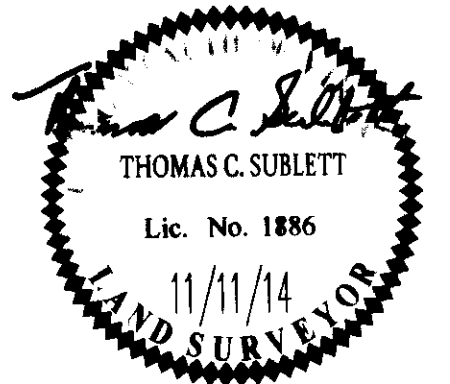


UNDISTURBED NATURAL OPEN SPACE (N.O.S.) EASEMENT AREA TABULATION

UNDISTURBED N.O.S. EASEMENT #1	244,399 S.F./5.811 AC.
UNDISTURBED N.O.S. EASEMENT #2	39,652 S.F./0.910 AC.
UNDISTURBED N.O.S. EASEMENT #3	13,185 S.F./0.303 AC.
UNDISTURBED N.O.S. EASEMENT #4C	310,713 S.F./7.133 AC.



1	11/11/14	REVISED PER COUNTY COMMENTS DATED SEPTEMBER 11, 2014	By
Rev.	Date	Description	By



AES
CONSULTING ENGINEERS
5248 Old Towne Road, Suite 1
Williamsburg, Virginia 23186
Phone: (757) 253-0040
Fax: (757) 220-8994
www.aesva.com

**PLAT OF SUBDIVISION
PHASE II, LOTS 1-11, AND 28-37
THE COTTAGES AT STONE HAVEN
OWNER/DEVELOPER: NOL, L.L.C.**

BERKELEY DISTRICT JAMES CITY COUNTY VIRGINIA

Project Contacts: TCB
Project Number: 8700-02
Scale: 1"=100'
Date: 08/26/14
Sheet Number:
4 of 4