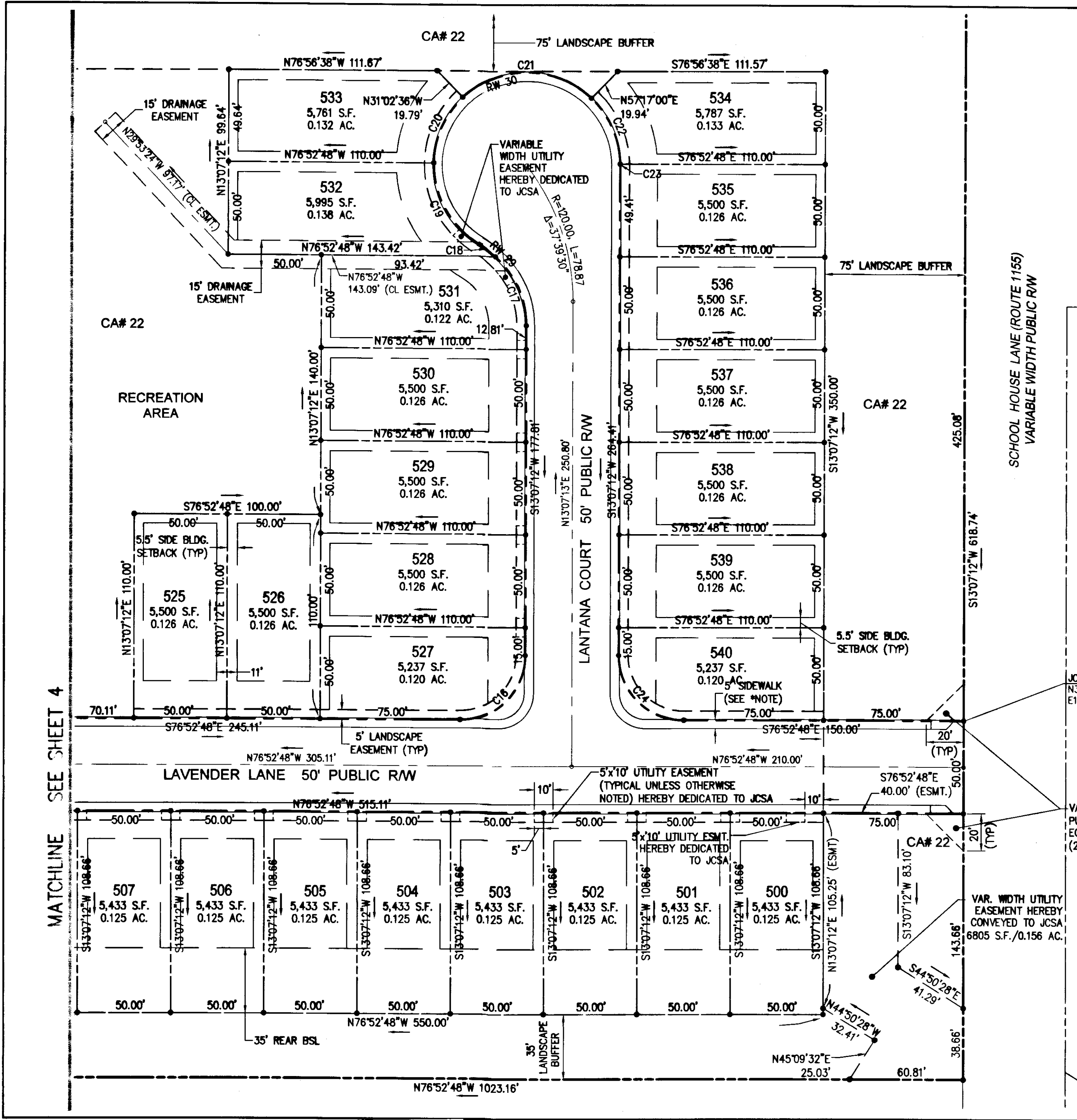


150004500



CURVE TABLE						
CURVE #	DELTA	RADIUS	LENGTH	TANGENT	CHORD	CHORD BEARING
C16	90°00'00"	35.00'	54.98'	35.00'	49.50'	N58°07'12"E
C17	48°03'11"	50.00'	41.93'	22.29'	40.72'	N10°54'23"W
C18	11°56'49"	50.00'	10.43'	5.23'	10.41'	N40°54'23"W
C19	60°40'16"	50.00'	52.95'	29.26'	50.51'	S16°32'40"E
C20	45°37'59"	50.00'	39.82'	21.04'	38.78'	S36°36'28"W
C21	87°23'30"	50.00'	76.26'	47.77'	69.08'	N76°52'48"W
C22	45°37'59"	50.00'	39.82'	21.04'	38.78'	N10°22'03"W
C23	0°40'18"	50.00'	0.59'	0.29'	0.59'	N12°47'06"E
C24	90°00'00"	35.00'	54.98'	35.00'	49.50'	S31°52'48"E

RIGHT-OF-WAY CURVE TABLE						
CURVE #	DELTA	RADIUS	LENGTH	TANGENT	CHORD	CHORD BEARING
RW 29	60°00'00"	50.00'	52.36'	28.87'	50.00'	N16°52'48"W
RW 30	240°00'00"	50.00'	209.44'	86.60'	86.60'	S73°07'14"W

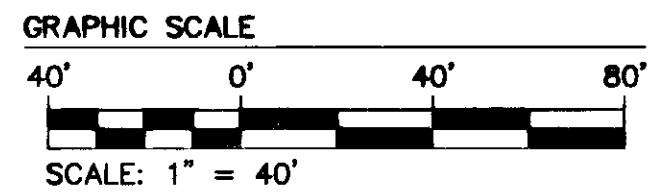
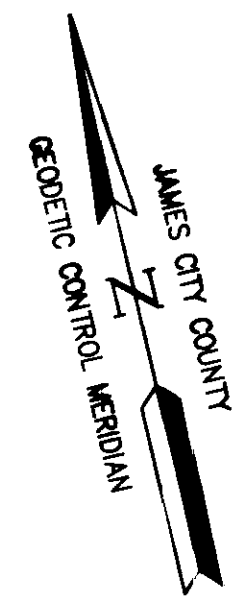
NOTE:
ALL LOTS TO CONTAIN A 5' PERIMETER DRAINAGE EASEMENT TO BE DEDICATED TO THE HOMEOWNERS ASSOCIATION. THESE EASEMENTS ARE TO PROVIDE RELIEF OF LOT TO LOT DRAINAGE.

***NOTE:**
IN THE AREAS WHERE THE 5' CONCRETE SIDEWALK IS NOT WITHIN THE RIGHT OF WAY THERE SHALL BE A 1' PEDESTRIAN ACCESS EASEMENT. THE SIDEWALKS ARE TO BE MAINTAINED BY THE WHITE HALL HOMEOWNER'S ASSOCIATION.

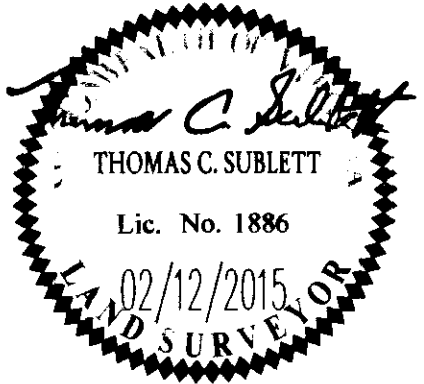
N/T
WILLIAMSBURG CHRISTIAN
ACADEMY INC.
INSTRUMENT #010016565
P.B. 83, PG. 31
TAX PARCEL # (13-1)(1-3)
ZONED B1

JCC COORDINATES
N3672457.17
E11979111.61

VARIABLE WIDTH
PUBLIC INGRESS/
EGRESS EASEMENT
(200 S.F. EACH SIDE)



MATCHLINE SEE SHEET 4

City of Williamsburg & County of James City Circuit Court: This PLAT was recorded on March 17, 2015 at 9:43 AM P.B. PG. 31 Document # 150004500 BETSY B. WOOLRIDGE, CLERK <i>Betsy Woolridge</i> Dep. Clerk			
1	2/12/15	REVISED PER COUNTY COMMENTS DATED 2-9-2015	Revised By

AES
CONSULTING ENGINEERS
5248 Olde Towne Road, Suite 1
Williamsburg, Virginia 23188
Phone: (757) 253-0040
Fax: (757) 220-8994
www.aesva.com
Hampton Roads | Central Virginia | Middle Peninsula

PLAT OF SUBDIVISION
WHITE HALL
SECTION 5, LOTS 500-540 & CA#22
JCC CASE NO. S-0053-2013
STONEHOUSE DISTRICT JAMES CITY COUNTY VIRGINIA

Project Contacts: TCS/FRS
Project Number: 8048-20A
Scale: 1"=40' Date: 11/10/2014
Sheet Number:
3 OF 4