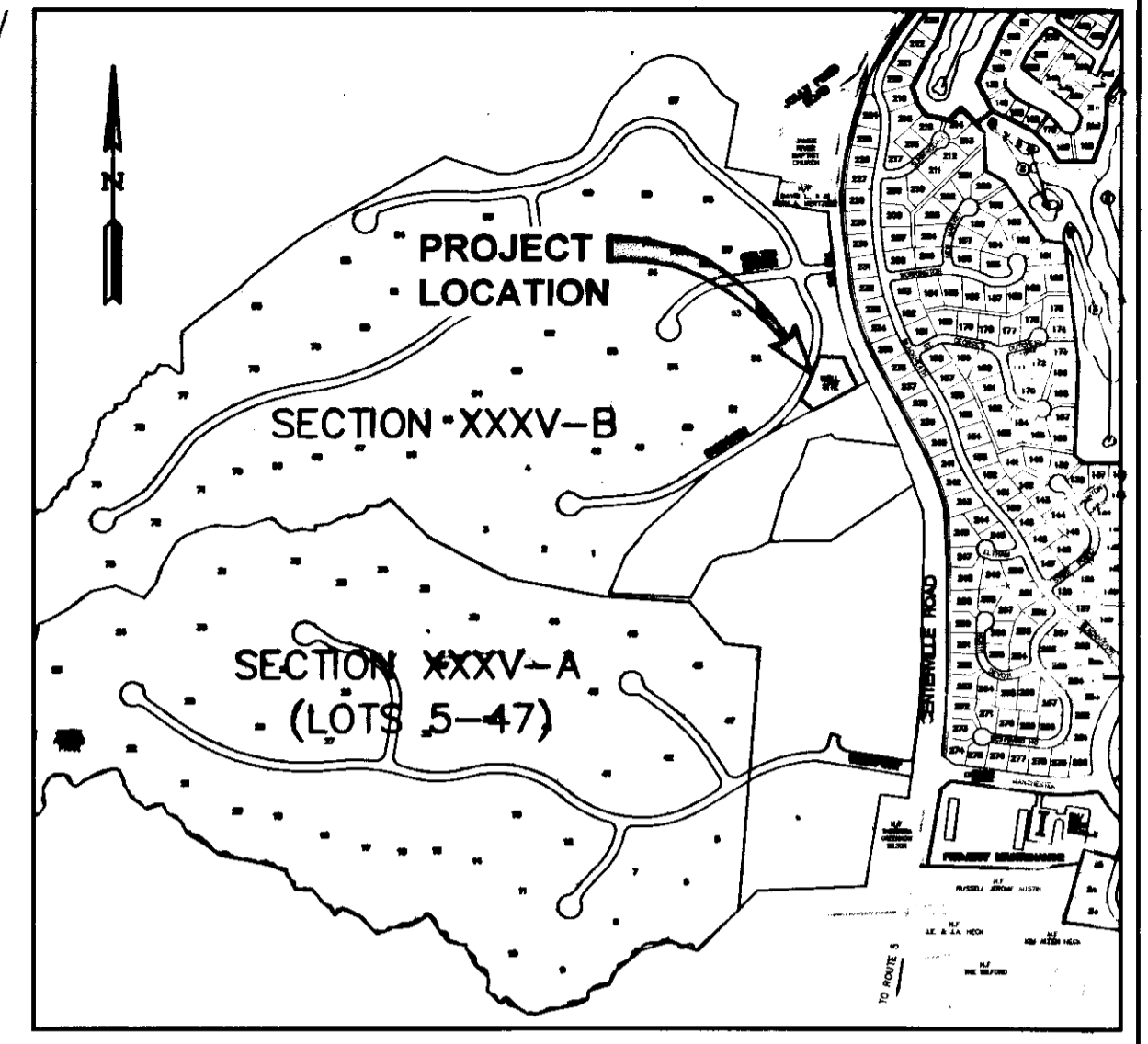
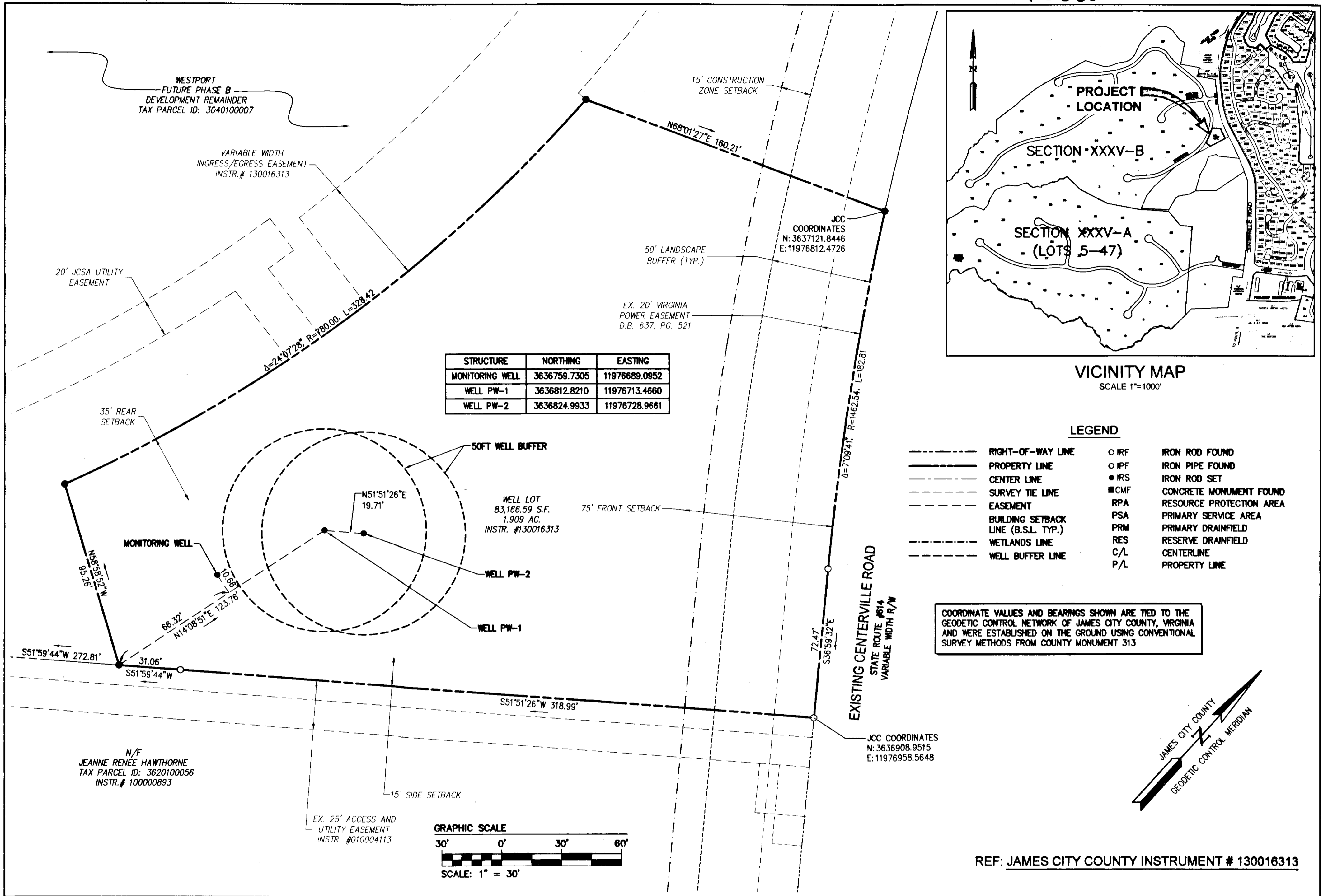


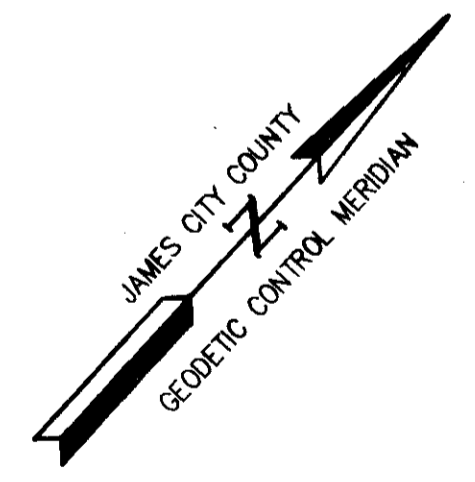
150002611



**LEGEND**

---	RIGHT-OF-WAY LINE	○ IRF	IRON ROD FOUND
---	PROPERTY LINE	○ IPF	IRON PIPE FOUND
---	CENTER LINE	● IRS	IRON ROD SET
---	SURVEY TIE LINE	■ CMF	CONCRETE MONUMENT FOUND
---	EASEMENT	RPA	RESOURCE PROTECTION AREA
---	BUILDING SETBACK LINE (B.S.L. TYP.)	PSA	PRIMARY SERVICE AREA
---	WETLANDS LINE	PRM	PRIMARY DRAINFIELD
---	WELL BUFFER LINE	RES	RESERVE DRAINFIELD
		C/L	CENTERLINE
		P/L	PROPERTY LINE

COORDINATE VALUES AND BEARINGS SHOWN ARE TIED TO THE GEODETIC CONTROL NETWORK OF JAMES CITY COUNTY, VIRGINIA AND WERE ESTABLISHED ON THE GROUND USING CONVENTIONAL SURVEY METHODS FROM COUNTY MONUMENT 313



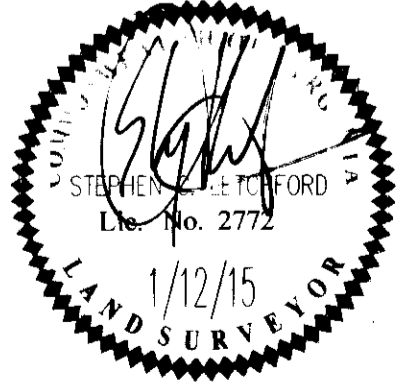
REF: JAMES CITY COUNTY INSTRUMENT # 130016313

S:\UOB\SW10145\00-Section 35\Survey\Plans\Plats\W10145-Well Location Plat.dwg, 2/12/2015 1:33:03 PM

City of Williamsburg & County of James City  
Circuit Court: This PLAT was recorded on  
February 13, 2015

at 8:47 AM/PM, PB \_\_\_\_\_ PG \_\_\_\_\_  
Document # 150002611  
BETSY B. WOOLRIDGE, CLERK  
amy stull, Dep. Clerk

Rev	Date	Description	Revised By



**INES**  
CONSULTING ENGINEERS  
5248 Olde Towne Road, Suite 1  
Williamsburg, Virginia 23188  
Phone: (757) 253-0040  
Fax: (757) 220-8994  
www.inesva.com

Hampton Roads | Central Virginia | Middle Peninsula

PLAT OF CORRECTION  
SHOWING WELL LOCATIONS AND RELATED BUFFERS  
BEING A PORTION OF  
**WESTPORT**  
SECTION 35  
AT FORD'S COLONY  
POWHATAN DISTRICT JAMES CITY COUNTY VIRGINIA

Project Contacts: JAG  
Project Number: W10145  
Scale: 1"=30'  
Date: 1/12/15  
Sheet Number  
**1 OF 1**