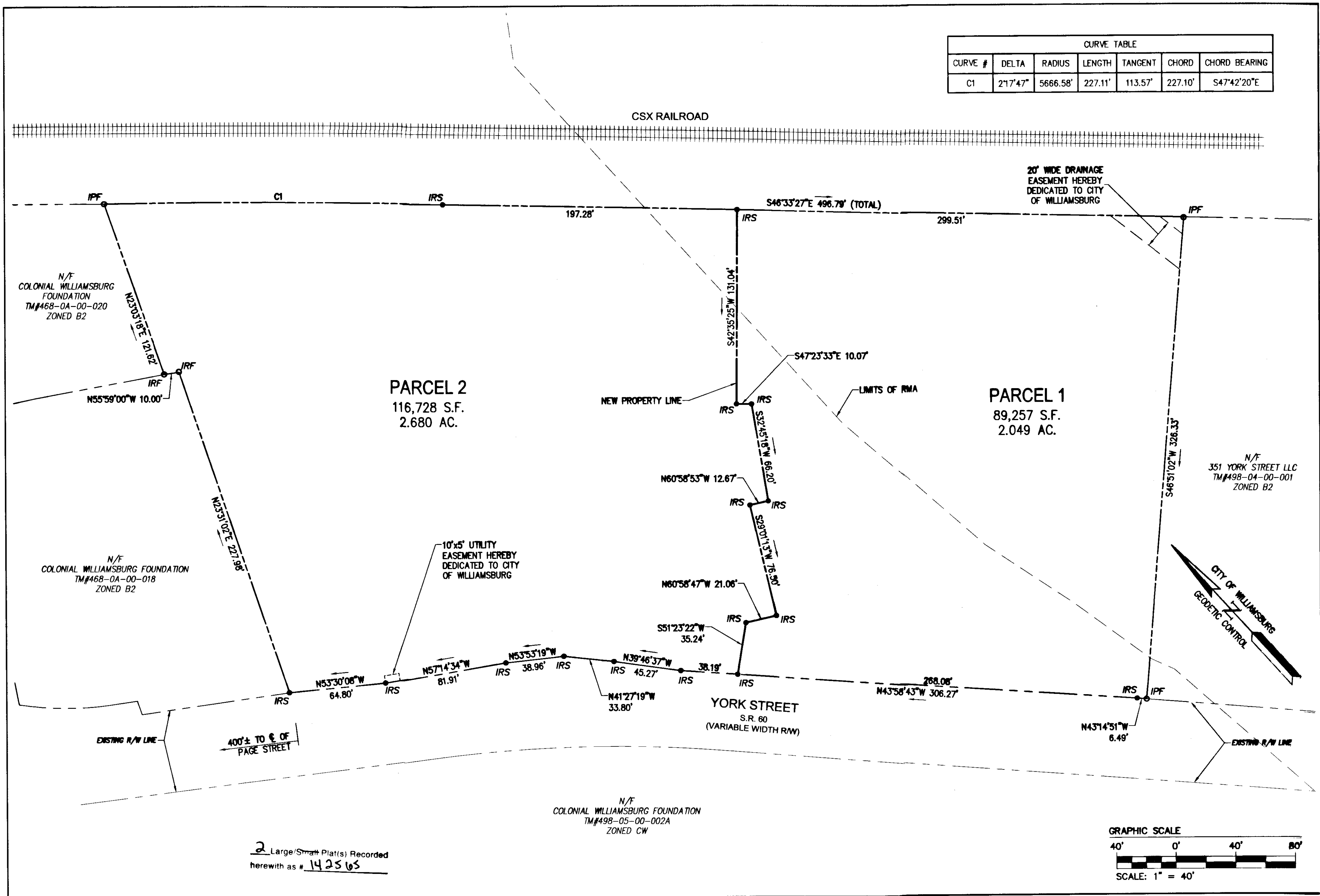
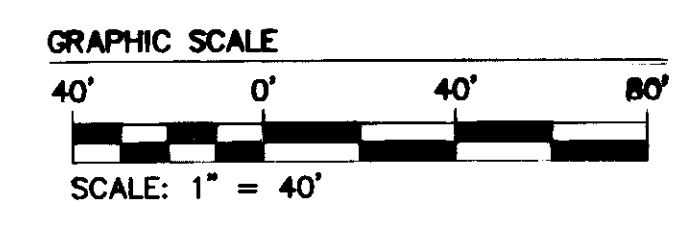


142565

CURVE TABLE						
CURVE #	DELTA	RADIUS	LENGTH	TANGENT	CHORD	CHORD BEARING
C1	2°17'47"	5666.58'	227.11'	113.57'	227.10'	S47°42'20"E

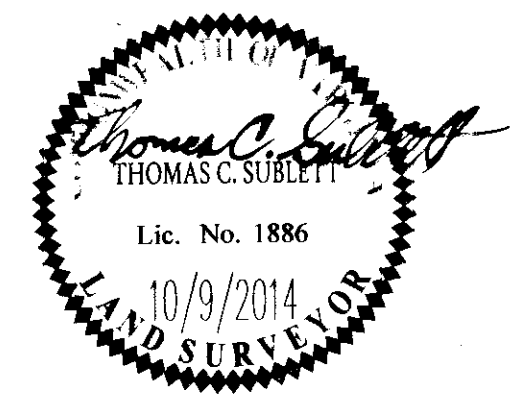


2 Large/Small Plat(s) Recorded
herewith as # 142565



Rev	Date	Description	Revised By

City of Williamsburg & County of James City
Circuit Court: This PLAT was recorded on
November 16, 2014
at 10:01 AM/PM, PG PG
Document # 142565
BETSY B. WOOLRIDGE, CLERK
amy stoney, Dep. Clerk



AES
CONSULTING ENGINEERS
Hampton Roads | Central Virginia | Middle Peninsula

5248 Old Towne Road, Suite 1
Williamsburg, Virginia 23188
Phone: (757) 253-0040
Fax: (757) 220-8994
www.aesva.com

PLAT OF SUBDIVISION
BG PATRICK HENRY
BEING THE PROPERTY OF
BLUEGREEN VACATIONS UNLIMITED, INC.
STRYKER DISTRICT CITY OF WILLIAMSBURG VIRGINIA

Project Contacts: TCS/SDG
Project Number: W09711-10
Scale: 1"=40' Date: 10-8-2014
Sheet Number
2 of 2