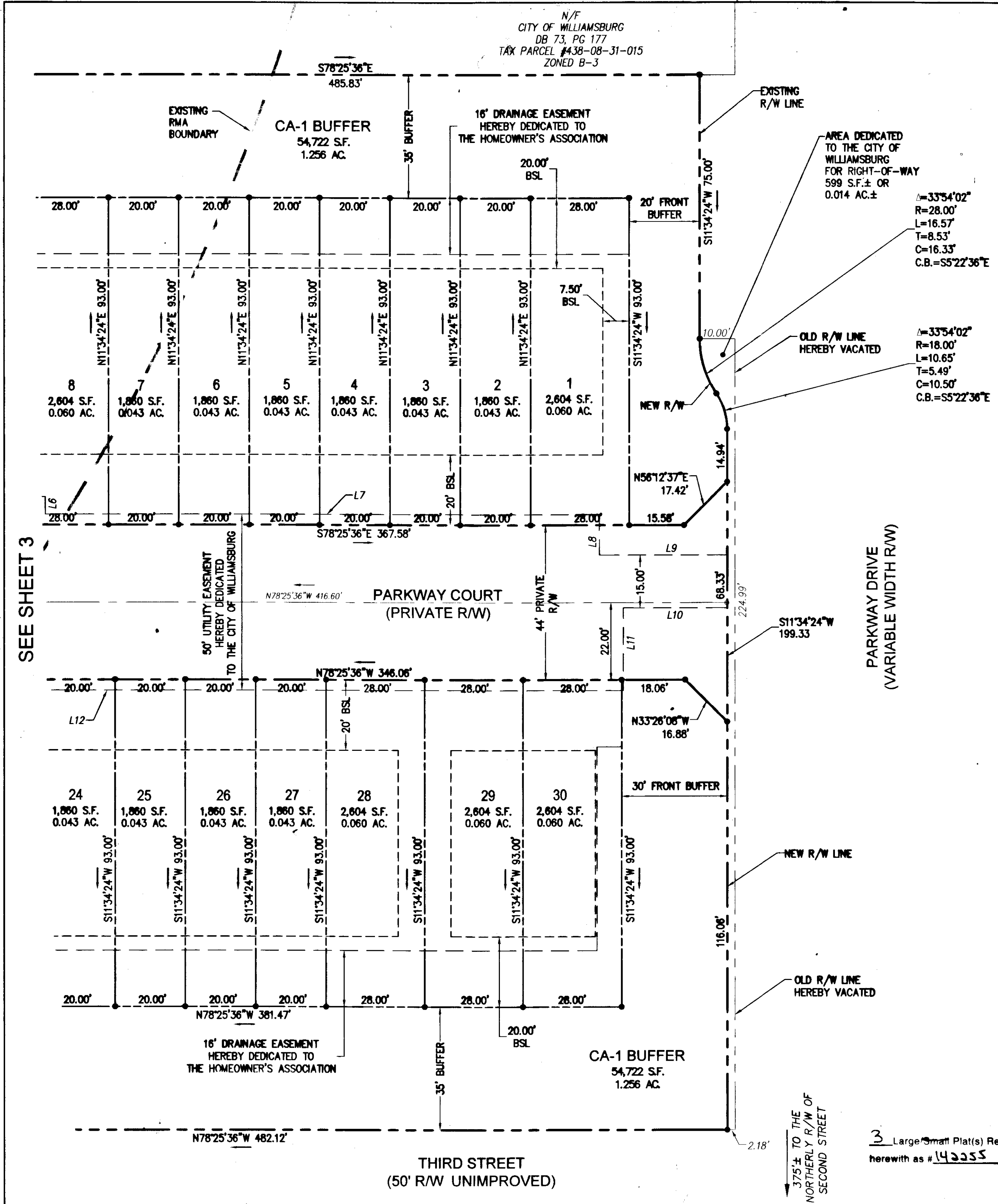
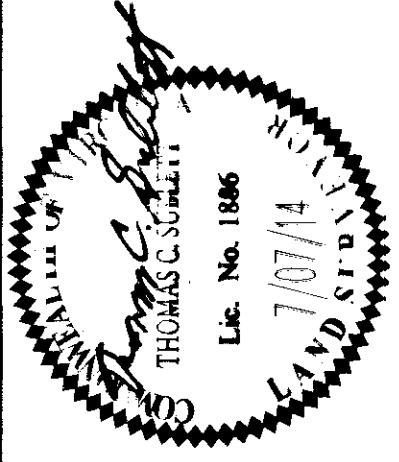


142255



LINE	BEARING	LENGTH
L1	S78°25'36"E	20.00'
L2	S11°34'24"W	5.00'
L3	S78°25'36"E	153.65'
L4	N11°34'24"E	5.00'
L5	S78°25'36"E	20.00'
L6	S11°34'24"W	4.99'
L7	S78°25'36"E	157.49'
L8	S11°34'24"W	11.50'
L9	S78°25'36"E	36.32'
L10	N78°25'36"W	29.50'
L11	S11°34'24"W	23.50'
L12	N78°25'36"W	320.00'
L13	N11°34'24"E	11.50'
L14	N78°25'36"W	9.82'
L15	S11°34'24"W	136.50'
L16	N11°34'24"E	148.50'
L17	N78°25'36"W	13.15'
L18	N11°34'24"E	31.50'

LINE	BEARING	LENGTH
L1	S78°25'36"E	20.00'
L2	S11°34'24"W	5.00'
L3	S78°25'36"E	153.65'
L4	N11°34'24"E	5.00'
L5	S78°25'36"E	20.00'
L6	S11°34'24"W	4.99'
L7	S78°25'36"E	157.49'
L8	S11°34'24"W	11.50'
L9	S78°25'36"E	36.32'
L10	N78°25'36"W	29.50'
L11	S11°34'24"W	23.50'
L12	N78°25'36"W	320.00'
L13	N11°34'24"E	11.50'
L14	N78°25'36"W	9.82'
L15	S11°34'24"W	136.50'
L16	N11°34'24"E	148.50'
L17	N78°25'36"W	13.15'
L18	N11°34'24"E	31.50'



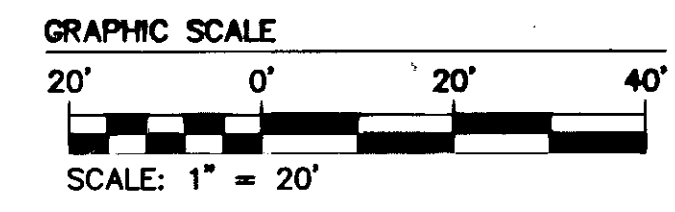
2245 Old Towne Road, Suite 1
 Williamsburg, Virginia 23185
 Phone: (757) 253-0040
 Fax: (757) 220-8884
 www.aseve.com

ASEVE
 CONSULTING ENGINEERS

Hampton Roads | Central Virginia | Middle Peninsula

PLAT OF SUBDIVISION
**PARKWAY TOWNS
 AT WILLIAMSBURG**
 BEING THE PROPERTY OF
 PARKWAY PARTNERS, L.L.C.
 CITY OF WILLIAMSBURG, VIRGINIA

Project Contact:	TCS/JFS
Project Number:	W9297-03
Scale:	Date:
1"=20'	7/07/14
Sheet Number:	
2 OF 3	



STATE OF VIRGINIA
 CITY OF WILLIAMSBURG & COUNTY OF JAMES CITY CIRCUIT COURT. THIS
 30th DAY OF September, 2014.
 THE PLAT SHOWN HEREON WAS PRESENTED AND ADMITTED TO THE RECORD
 AS THE LAW DIRECTS. @ 10:21 AM/PM
 INSTRUMENT # 142255
 TESTE: Jmy Steury DC
 BETSY B. WOOLRIDGE, CLERK

3 Large/Small Plat(s) Recorded
 herewith as # 142255

SEE SHEET 3

375± TO THE
 NORTHERLY R/W OF
 SECOND STREET