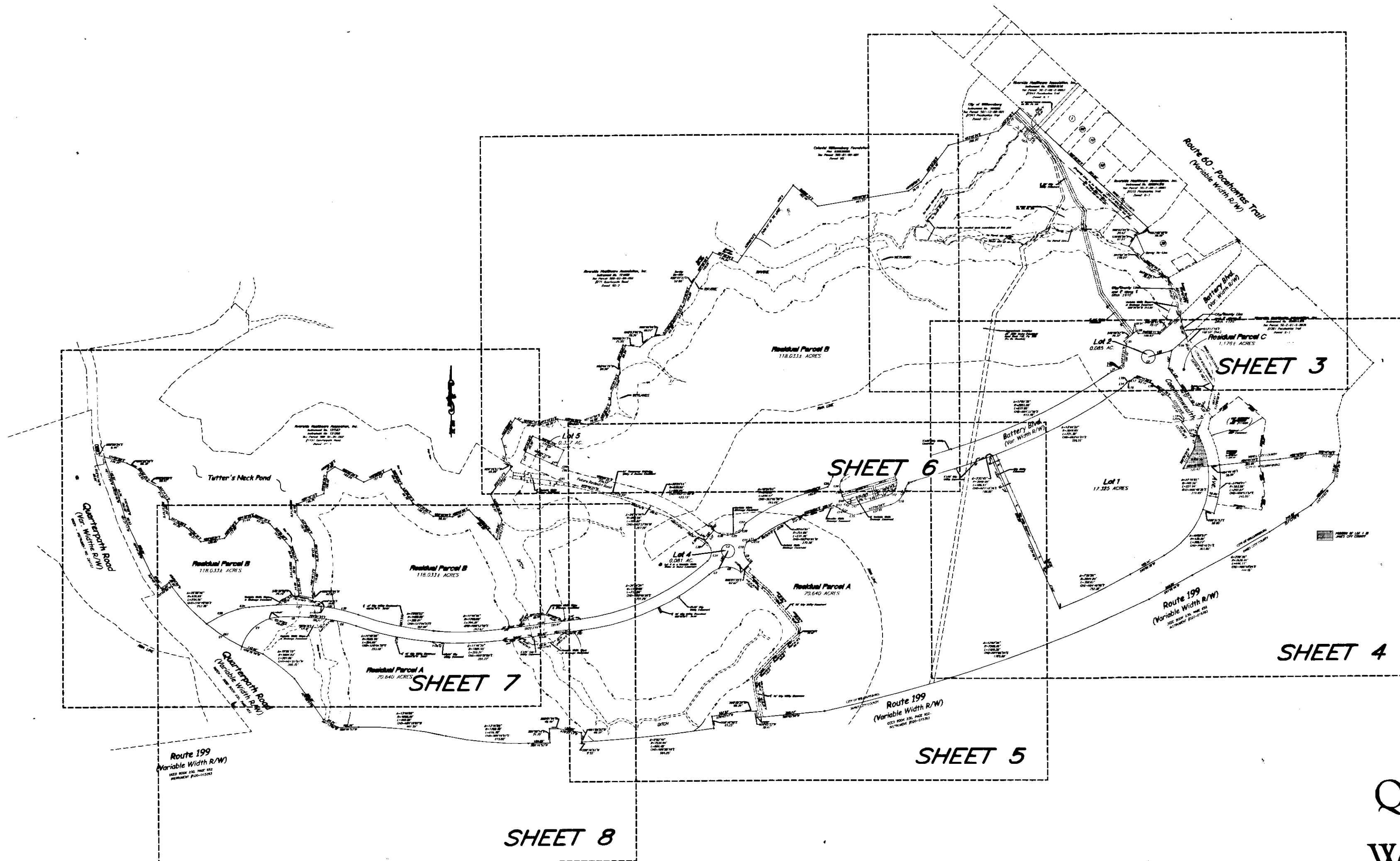


SHEET 1 = COVER SHEET
SHEET 2 = INDEX SHEET
SHEET 9 = TABLE SHEET



SHEET INDEX

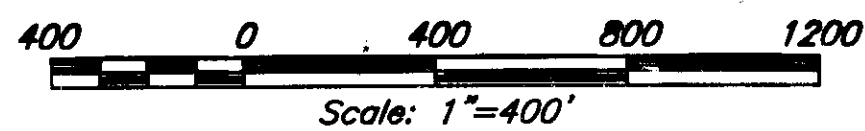
Quarterpath
at
Williamsburg
Section 1

City of Williamsburg, Virginia
SCALE: 1"=400' DATE: JANUARY 20, 2014



Shadrach & Associates, LLC

LAND SURVEYING
430 Southlake Blvd., Suite 10-B • Richmond, Virginia 23236
Phone: (804)379-9300 • Fax: (804)379-9301



9 Large ~~MAP~~ Plat(s) Recorded
herewith as # 140705

City of Williamsburg & County of James City
Circuit Court: This PLAT was recorded on
15 April 2014
at 12:27 PM, PB — PG —
Document # 140705
BETSY B. WOOLRIDGE, CLERK
Betsy Woolridge, Dep. Clerk