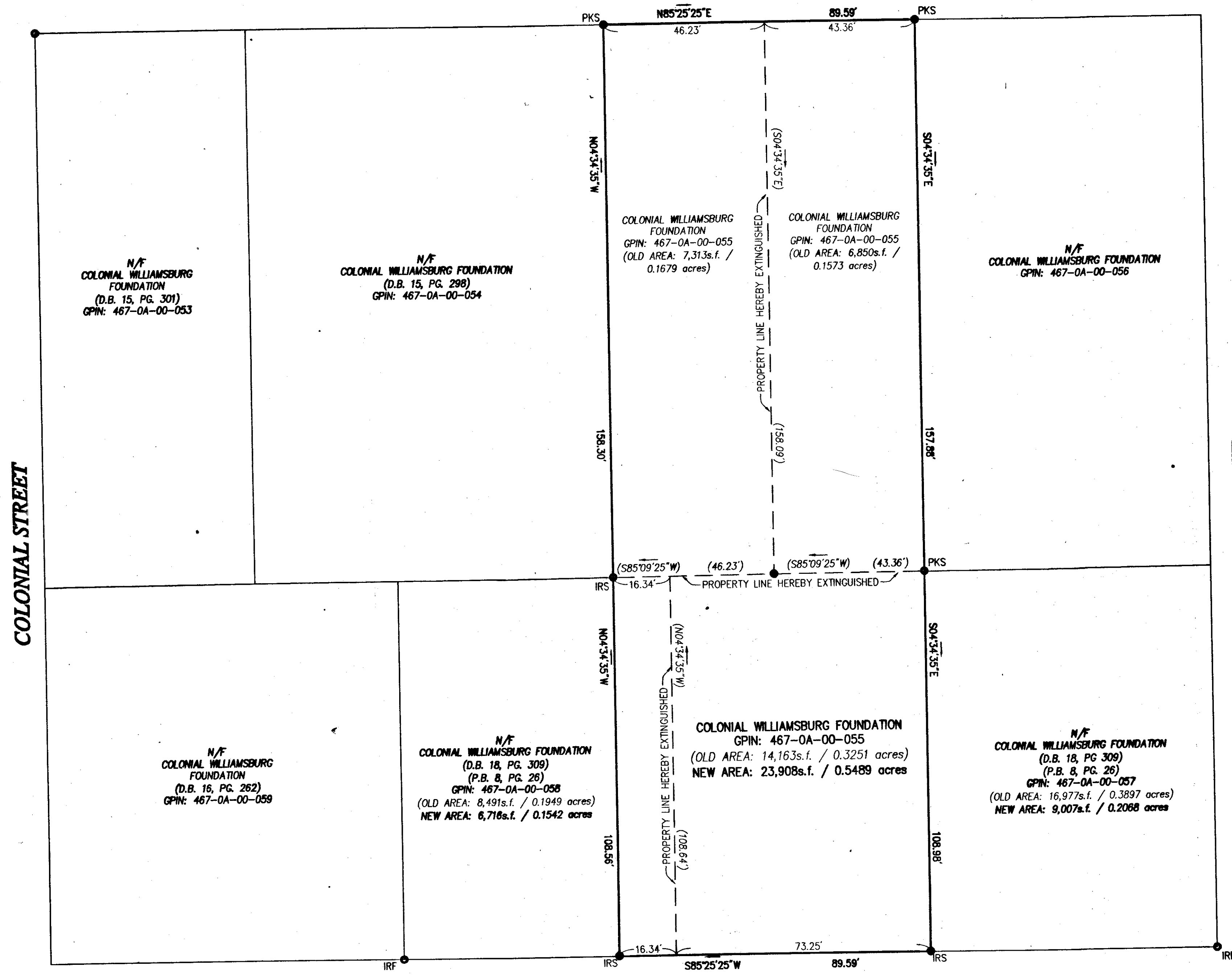
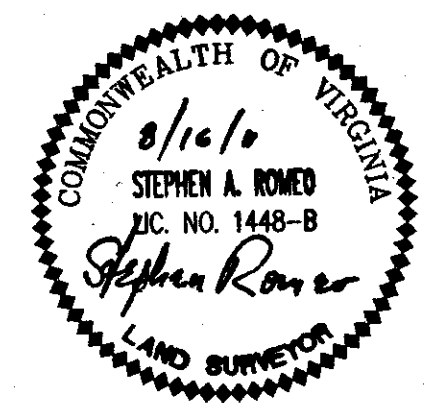
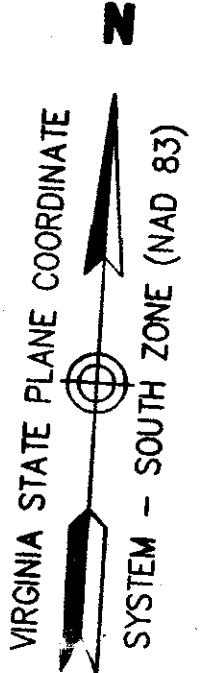


DUKE OF GLOUCESTER STREET



Legend

- IRF IRON ROD FOUND
- IRS IRON ROD SET
- PKS PK NAIL SET
- D.B. DEED BOOK
- P.B. PLAT BOOK
- PG. PAGE
- (43.21') EXTINGUISHED PROPERTY LINE LABELS



Boundary Line Adjustment
 Between Properties Owned By
The Colonial Williamsburg Foundation
 Williamsburg, Virginia
 SCALE: 1"=20' DATE: August 16, 2011
 Sheet 2 of 2

FRANCIS STREET

City of Williamsburg & County of James City
 Circuit Court: This PLAT was recorded on
10 March 2014
 at 9:47 AM/PM, PG. —
 Document # 140512
 BETSY B. WOOLRIDGE, CLERK
Michael H. ..., Dep. Clerk

2 Large/Small Plats Recorded
 herewith as # 140512

VHB Vanasse Hangen Brustlin, Inc.
 Transportation Land Development Environmental Services
 351 McLaws Circle, Suite 3
 Williamsburg, Virginia 23185-6316
 (757) 220 0500 FAX (757) 220 8544