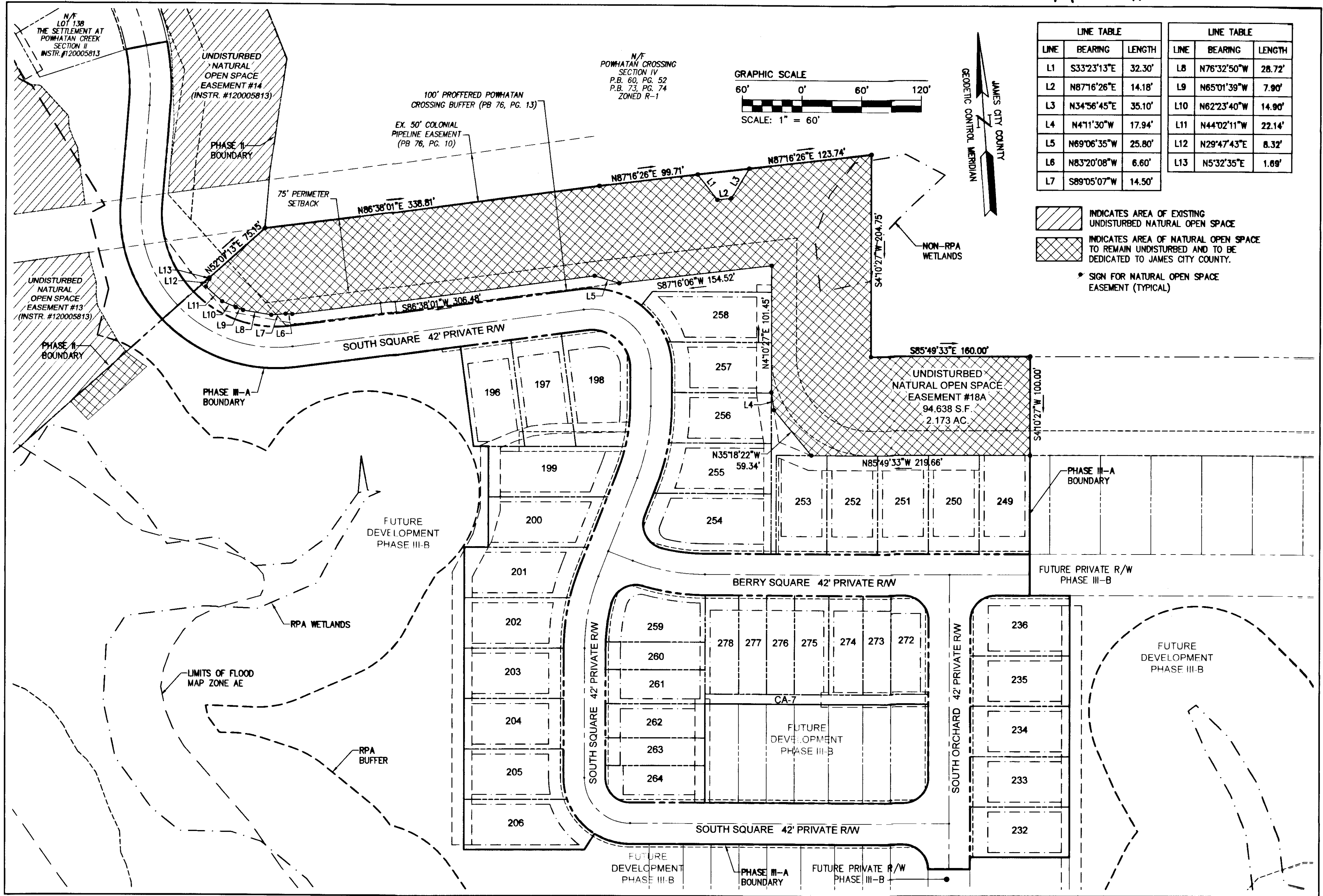


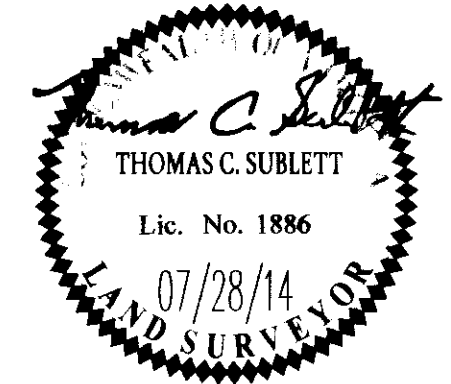
140019166



LINE TABLE			LINE TABLE		
LINE	BEARING	LENGTH	LINE	BEARING	LENGTH
L1	S33°23'13"E	32.30'	L8	N76°32'50"W	28.72'
L2	N87°16'26"E	14.18'	L9	N65°01'39"W	7.90'
L3	N34°56'45"E	35.10'	L10	N62°23'40"W	14.90'
L4	N4°11'30"W	17.94'	L11	N44°02'11"W	22.14'
L5	N69°06'35"W	25.80'	L12	N29°47'43"E	8.32'
L6	N83°20'08"W	6.60'	L13	N5°32'35"E	1.09'
L7	S89°05'07"W	14.50'			

INDICATES AREA OF EXISTING UNDISTURBED NATURAL OPEN SPACE  
 INDICATES AREA OF NATURAL OPEN SPACE TO REMAIN UNDISTURBED AND TO BE DEDICATED TO JAMES CITY COUNTY.  
 SIGN FOR NATURAL OPEN SPACE EASEMENT (TYPICAL)

6 Large/Small Plat(s) Recorded herewith as # 140019166	City of Williamsburg & County of James City Circuit Court: This PLAT was recorded on 11-20-2014 at 9:12 AM/PM, PB PG Document # 140019166 BETSY B. WOOLRIDGE, CLERK <i>Genny Stover</i> , Dep. Clerk		
1 07/28/14	REVISION		
Rev.	Date	Description	Revised By



**AES**  
CONSULTING ENGINEERS  
5248 Olde Towne Road, Suite 1  
Williamsburg, Virginia 23188  
Phone: (757) 253-0040  
Fax: (757) 220-8994  
www.aesva.com  
Hampton Roads | Central Virginia | Middle Peninsula

PLAT OF SUBDIVISION  
**THE SETTLEMENT AT POWHATAN CREEK**  
PHASE III-A  
LOTS 196-206, 232-236, 249-264, 272-278  
AND COMMON AREA 6A & 7  
BERKELEY DISTRICT JAMES CITY COUNTY VIRGINIA

Project Contacts:	TCB
Project Number:	9264-11A
Scale:	1"=60'
Date:	07/09/14
Sheet Number	6 of 6