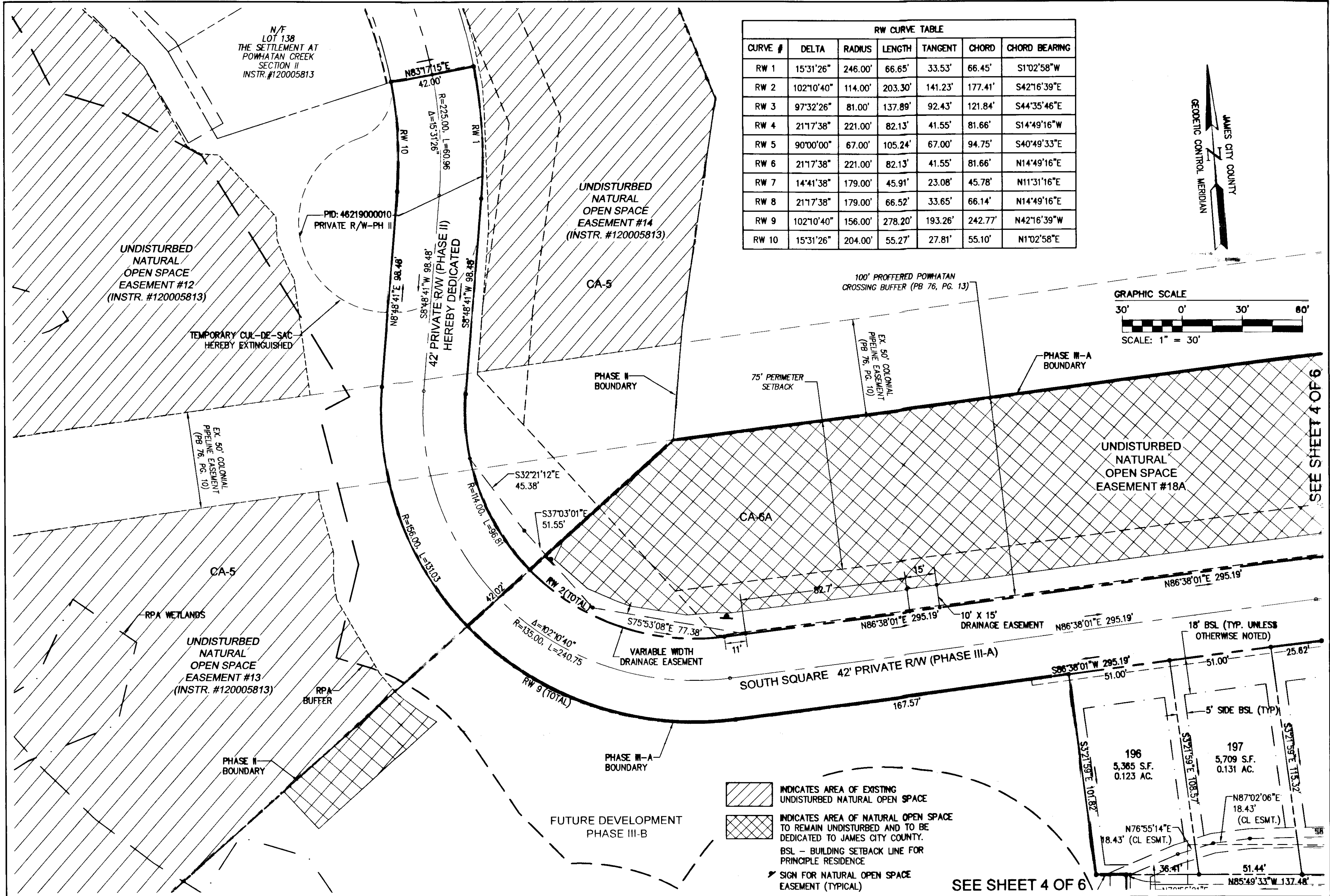
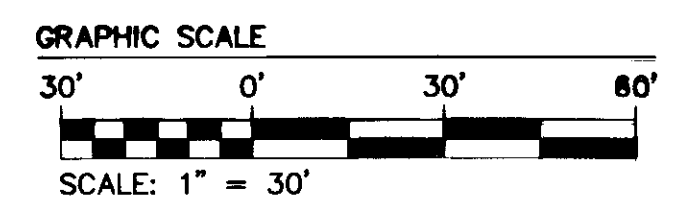
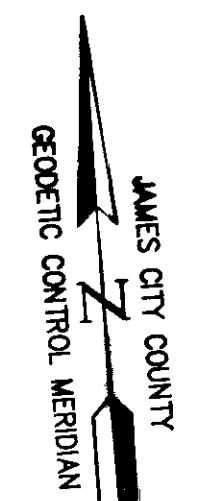


14009166



RW CURVE TABLE						
CURVE #	DELTA	RADIUS	LENGTH	TANGENT	CHORD	CHORD BEARING
RW 1	15°31'26"	246.00'	66.65'	33.53'	66.45'	S1°02'58"W
RW 2	102°10'40"	114.00'	203.30'	141.23'	177.41'	S42°16'39"E
RW 3	97°32'26"	81.00'	137.89'	92.43'	121.84'	S44°35'46"E
RW 4	21°17'38"	221.00'	82.13'	41.55'	81.66'	S14°49'16"W
RW 5	90°00'00"	67.00'	105.24'	67.00'	94.75'	S40°49'33"E
RW 6	21°17'38"	221.00'	82.13'	41.55'	81.66'	N14°49'16"E
RW 7	14°41'38"	179.00'	45.91'	23.08'	45.78'	N11°31'16"E
RW 8	21°17'38"	179.00'	66.52'	33.65'	66.14'	N14°49'16"E
RW 9	102°10'40"	156.00'	278.20'	193.26'	242.77'	N42°16'39"W
RW 10	15°31'26"	204.00'	55.27'	27.81'	55.10'	N1°02'58"E

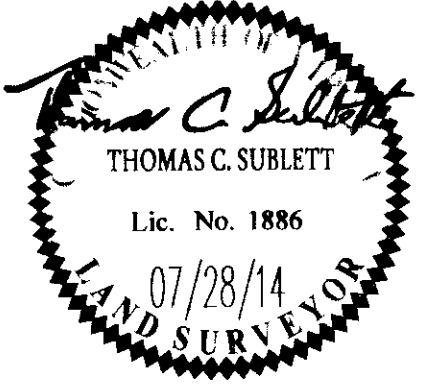


SEE SHEET 4 OF 6

- INDICATES AREA OF EXISTING UNDISTURBED NATURAL OPEN SPACE
- INDICATES AREA OF NATURAL OPEN SPACE TO REMAIN UNDISTURBED AND TO BE DEDICATED TO JAMES CITY COUNTY.
- BSL - BUILDING SETBACK LINE FOR PRINCIPLE RESIDENCE
- SIGN FOR NATURAL OPEN SPACE EASEMENT (TYPICAL)

SEE SHEET 4 OF 6

City of Williamsburg & County of James City Circuit Court: This PLAT was recorded on 11-20-2014 at 9:12 AM PM, PB PG Document # 14009166 BETSY B. WOOLRIDGE, CLERK Dep. Clerk			
1	07/28/14	REVISION	
Rev	Date	Description	Revised By



**NES**  
CONSULTING ENGINEERS  
Hampton Roads | Central Virginia | Middle Peninsula  
5245 Old Towne Road, Suite 1  
Williamsburg, Virginia 23186  
Phone: (757) 253-0040  
Fax: (757) 220-8994  
www.aesva.com

**PLAT OF SUBDIVISION  
THE SETTLEMENT AT POWHATAN CREEK  
PHASE III-A  
LOTS 196-206, 232-236, 249-264, 272-278  
AND COMMON AREA 6A & 7**

BERKELEY DISTRICT      JAMES CITY COUNTY      VIRGINIA

Project Contacts: TCS  
Project Number: 8264-11A  
Scale: 1"=30'      Date: 07/02/14  
Sheet Number  
**3 of 6**