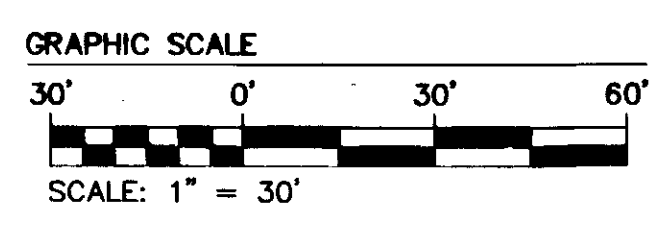
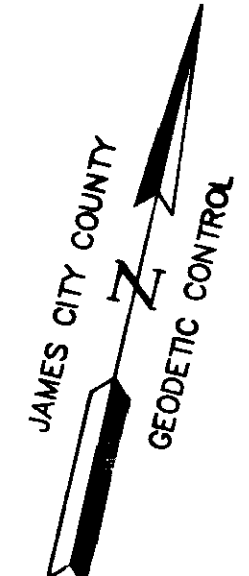
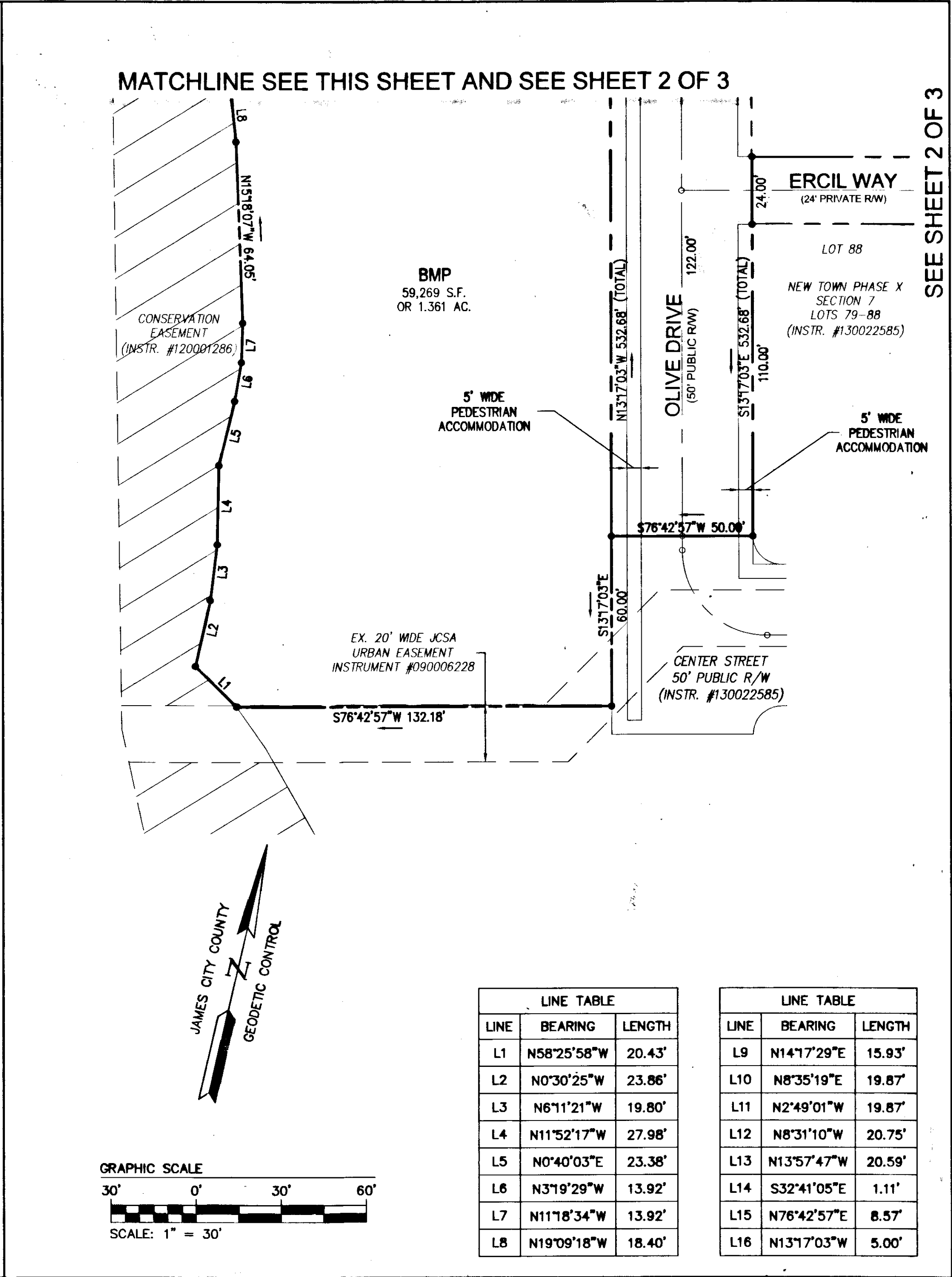
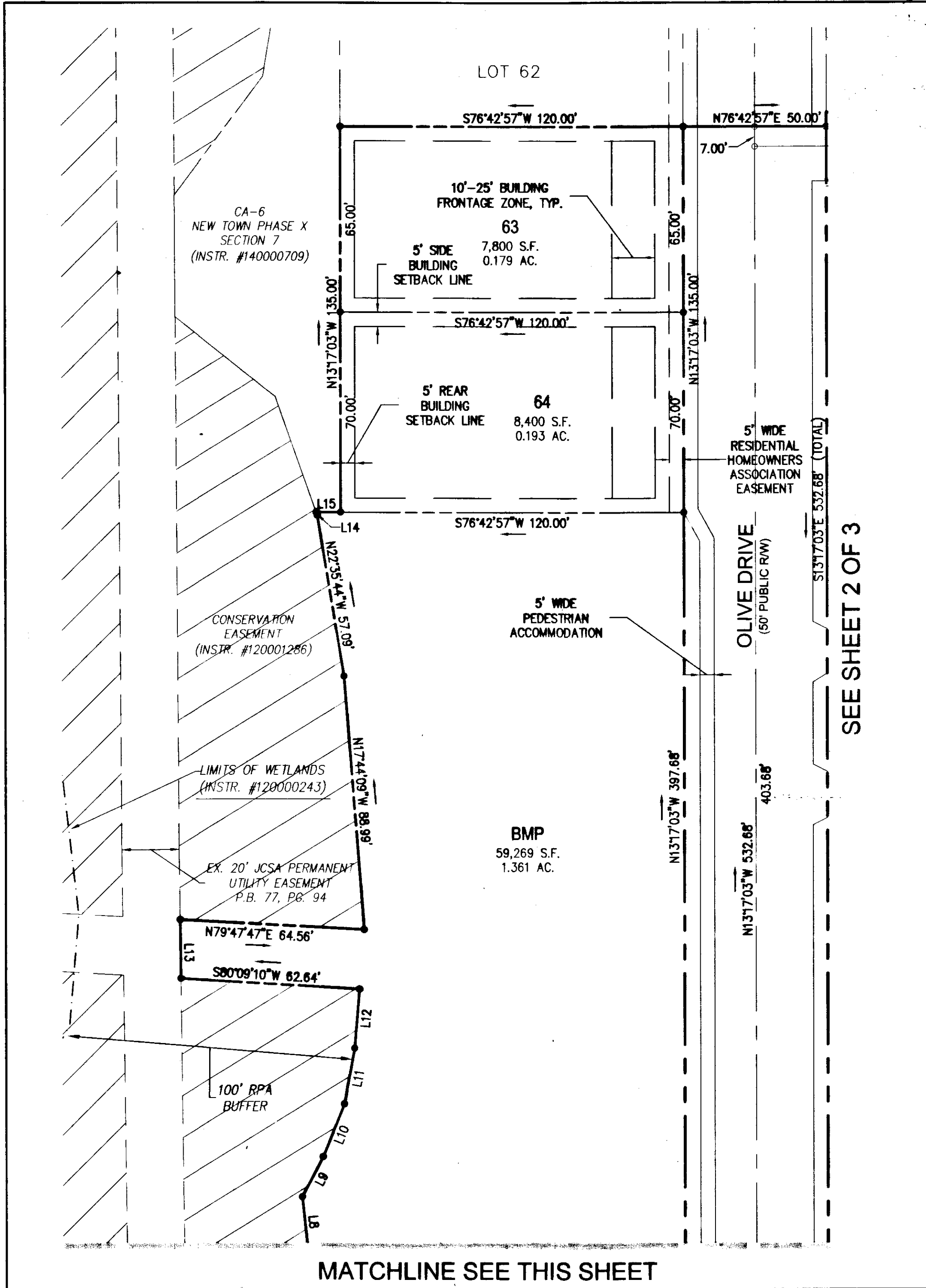


14006724



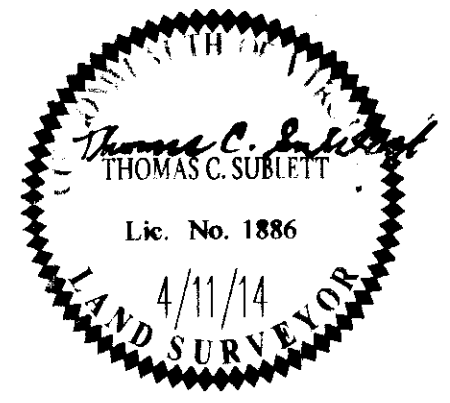
LINE TABLE		
LINE	BEARING	LENGTH
L1	N58°25'58"W	20.43'
L2	N0°30'25"W	23.86'
L3	N6°11'21"W	19.80'
L4	N11°52'17"W	27.98'
L5	N0°40'03"E	23.38'
L6	N3°19'29"W	13.92'
L7	N11°18'34"W	13.92'
L8	N19°09'18"W	18.40'

LINE TABLE		
LINE	BEARING	LENGTH
L9	N14°17'29"E	15.93'
L10	N8°35'19"E	19.87'
L11	N2°49'01"W	19.87'
L12	N8°31'10"W	20.75'
L13	N13°57'47"W	20.59'
L14	S32°41'05"E	1.11'
L15	N76°42'57"E	8.57'
L16	N13°17'03"W	5.00'

City of Williamsburg & County of James City  
 Circuit Court: This PLAT was recorded on  
October 10, 2014  
 at 4:05 AM/PM, PG 14  
 Document # 14006724  
 BETSY B. WOOLRIDGE, CLERK  
amy stoner, Dep. Clerk

3 Large/Small Plat(s) Recorded  
 herewith as # 14006724

Rev.	Date	Description	Revised By



**AES**  
 CONSULTING ENGINEERS  
 Hampton Roads | Central Virginia | Middle Peninsula

5248 Old Towne Road, Suite 1  
 Williamsburg, Virginia 23188  
 Phone: (757) 253-0040  
 Fax: (757) 220-8994  
 www.aesva.com

PLAT OF SUBDIVISION  
 PHASE X, SECTION 7  
 LOTS 63-64 AND 89-106  
 NEW TOWN  
 OWNED BY ABVA DEVELOPMENT, LP

JAMESTOWN DISTRICT      JAMES CITY COUNTY      VIRGINIA

Project Contacts: TCS/JRK  
 Project Number: 6632-07-05B  
 Scale: 1" = 30'      Date: 4/11/2014  
 Sheet Number  
**3 of 3**