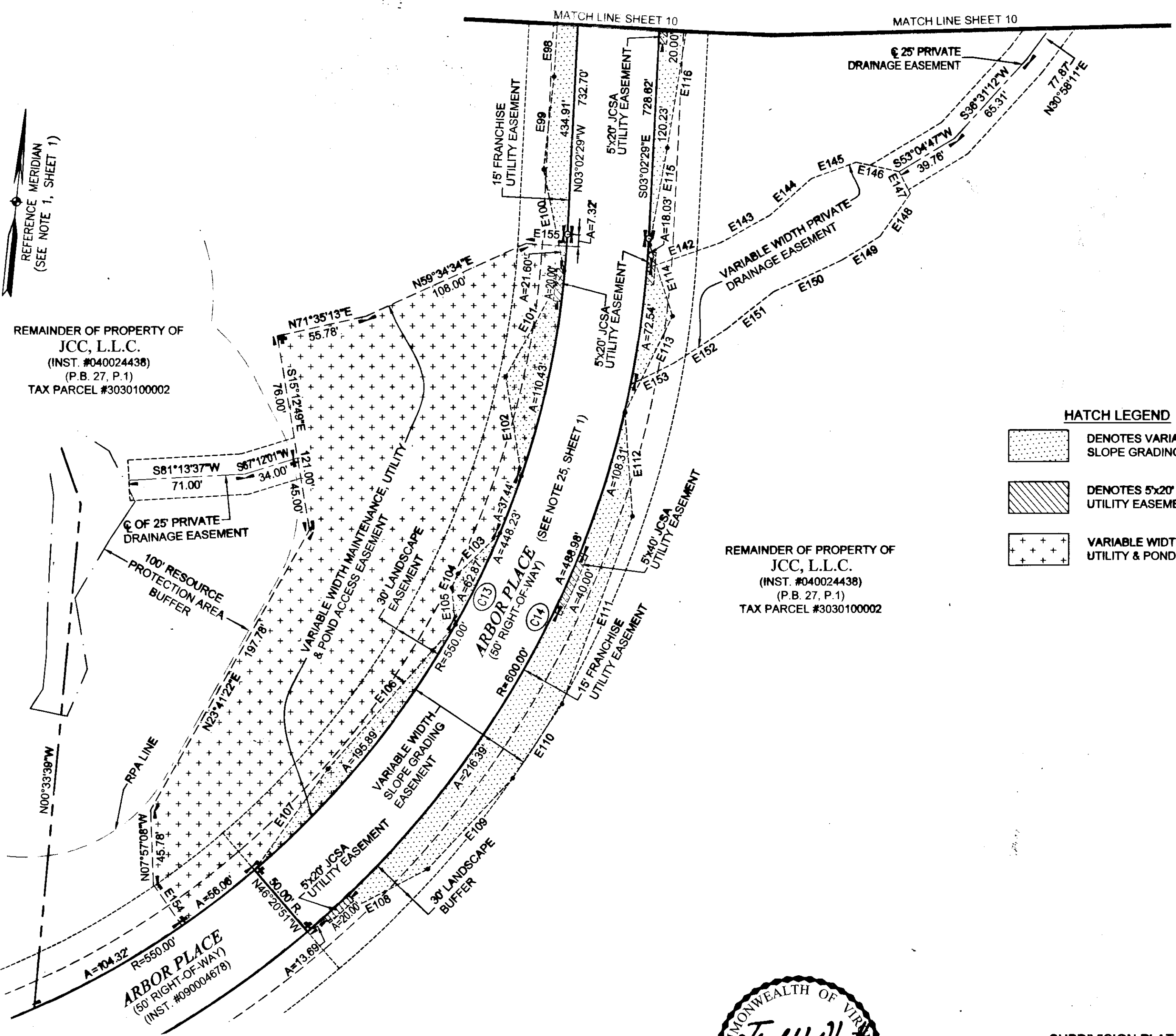


140016692

#	BEARING	DIST.
E98	S02°28'01"E	105.01'
E99	S00°34'59"W	57.55'
E100	S17°22'25"E	63.49'
E101	S22°57'26"W	74.43'
E102	S14°48'41"E	61.96'
E103	S39°51'51"W	36.05'
E104	S18°12'49"W	9.35'
E105	S11°28'23"E	22.96'
E106	S35°34'30"W	118.43'
E107	S30°09'44"W	76.63'
E108	N56°38'25"E	83.29'
E109	N37°06'59"E	76.51'
E110	N27°41'22"E	54.81'
E111	N14°37'22"E	123.66'
E112	N09°52'49"W	64.02'
E113	N20°20'26"E	66.16'
E114	N23°37'19"W	46.05'
E115	N04°20'36"E	60.66'
E116	N03°21'03"E	150.94'
E142	N65°00'00"E	48.18'
E143	N55°21'56"E	33.38'
E144	N42°40'26"E	34.68'
E145	N64°11'06"E	29.17'
E146	S83°32'40"E	27.09'
E147	S33°00'02"E	15.19'
E148	S29°31'18"W	32.13'
E149	S52°05'17"W	27.74'
E150	S59°12'12"W	46.26'
E151	S46°04'48"W	37.08'
E152	S50°59'36"W	37.58'
E153	S57°38'39"W	30.01'
E154	N40°30'28"W	30.94'R
E155	N87°43'16"E	25.00'R

LOT 76
LIBERTY RIDGE
SECTION 1
(INST.#090004678)



HATCH LEGEND

	DENOTES VARIABLE WIDTH SLOPE GRADING EASEMENT
	DENOTES 5x20' JCSA UTILITY EASEMENT
	VARIABLE WIDTH MAINTENANCE, UTILITY & POND ACCESS EASEMENT



SUBDIVISION PLAT
OF
LIBERTY RIDGE
BEING LOTS 87-89 & 91-95, SECTION 1-B
AND LOTS 96-110, SECTION 2-B
JAMES CITY COUNTY, VIRGINIA
SCALE: 1"=50' JANUARY 7, 2014
REVISED: JULY 21, 2014

CURVE TABLE

NO.	RADIUS	DELTA	ARC	TANGENT	CHORD	CH. BEARING
C13	600.00'	46°41'38"	488.98'	258.98'	475.56'	S20°18'20"W
C14	550.00'	46°41'38"	448.23'	237.40'	435.93'	N20°18'20"E

COMMONWEALTH OF VIRGINIA
CITY OF WILLIAMSBURG & COUNTY OF JAMES CITY CIRCUIT COURT.
THIS 10th DAY OF October, 2014.
THE PLAT SHOWN HEREON WAS PRESENTED AND ADMITTED TO
THE RECORD AS THE LAW DIRECTS. AT 10:52 AM PM
INSTRUMENT # 140016692
TESTE: Jmy Storey DC
BETSY B. WOOLRIDGE, CLERK

12 Large/Small Plat(s) Recorded
herewith as # 140016692



ROUSE-SIRINE ASSOCIATES, LTD.
LAND SURVEYORS & MAPPING CONSULTANTS
www.rouse-sirine.com
333 OFFICE SQUARE LANE VIRGINIA BEACH, VIRGINIA 23462
TEL:(757)490-2300 FAX:(757)499-9136
362 McLAWS CIRCLE, SUITE 1 WILLIAMSBURG, VIRGINIA 23185
TEL:(757)903-4695 FAX:(757)903-4469

