

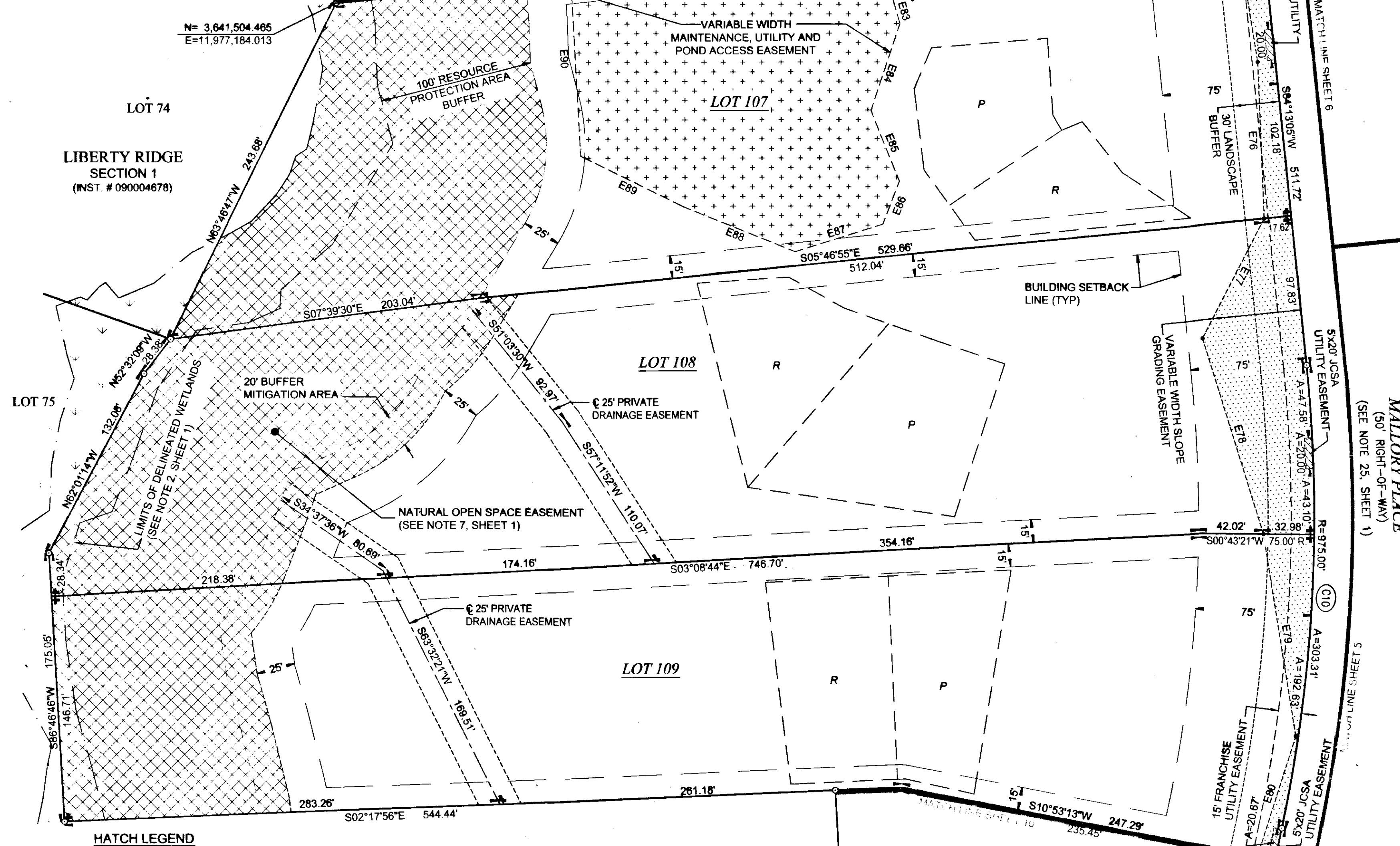
140016692

N= 3,642,104.844
E=11,977,123.220

TABLE OF AREAS		
LOT	SQUARE FEET	ACRES
107	133,850	3.073
108	145,258	3.335
109	131,060	3.009

EASEMENT LINE TABLE		
#	BEARING	DIST.
E75	N80°53'56"E	98.23
E76	N87°42'03"E	102.12
E77	S62°51'17"E	87.67
E78	N72°53'27"E	133.56
E79	N81°00'52"E	133.38
E80	S72°12'41"E	81.72
E81	S10°03'03"E	218.35'
E82	S29°11'37"E	27.39'
E83	N73°47'43"E	15.99'
E84	S71°32'37"E	59.79'
E85	N68°05'12"E	49.54'
E86	S68°50'42"E	29.93'
E87	S17°25'51"E	59.83'
E88	S22°07'26"W	78.11'
E89	S26°22'36"W	74.65'
E90	S86°51'36"W	114.57'

REFERENCE MERIDIAN
(SEE NOTE 1, SHEET 1)



HATCH LEGEND

- DENOTES VARIABLE WIDTH SLOPE GRADING EASEMENT
- DENOTES 5x20' JCSA UTILITY EASEMENT
- VARIABLE WIDTH MAINTENANCE, UTILITY & POND ACCESS EASEMENT
- NATURAL OPEN SPACE EASEMENT HEREBY DEDICATED TO JAMES CITY COUNTY (SEE NOTE 7, SHEET 1)

REMAINDER OF PROPERTY OF
JCC, L.L.C.
(INST. #040024438)
(P.B. 27, P.1)
TAX PARCEL #3030100002
herewith as # 140016692

SEPTIC DRAINFIELD LEGEND

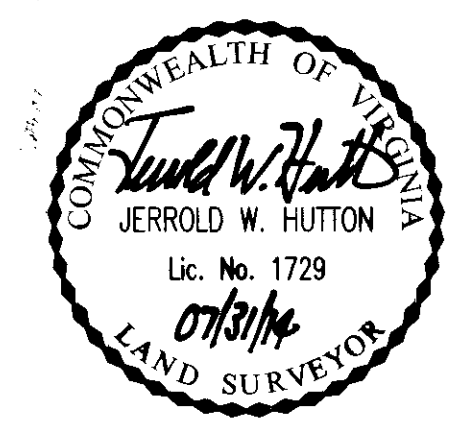
PRIMARY DRAINFIELD	RESERVE DRAINFIELD

(SEE NOTE 8, SHEET 1)

CURVE TABLE						
NO.	RADIUS	DELTA	ARC	TANGENT	CHORD	CH. BEARING
C10	975.00'	17°49'27"	303.31'	152.89'	302.09'	N86°52'11"W
C11	1025.00'	17°53'47"	320.16'	161.39'	318.86'	N86°54'21"W

COMMONWEALTH OF VIRGINIA
CITY OF WILLIAMSBURG & COUNTY OF JAMES CITY CIRCUIT COURT.
THIS 10th DAY OF October, 2014.
THE PLAT SHOWN HEREON WAS PRESENTED AND ADMITTED TO
THE RECORD AS THE LAW DIRECTS. AT 10:52 AM
INSTRUMENT # 140016692

TESTE: Jmy Storey OC
BETSY B. WOOLRIDGE, CLERK



SUBDIVISION PLAT
OF
LIBERTY RIDGE
BEING LOTS 87-89 & 91-95, SECTION 1-B
AND LOTS 96-110, SECTION 2-B
JAMES CITY COUNTY, VIRGINIA
SCALE: 1"=50' JANUARY 7, 2014
REVISED: JULY 21, 2014

ROUSE-SIRINE ASSOCIATES, LTD.
LAND SURVEYORS & MAPPING CONSULTANTS
www.rouse-sirine.com
333 OFFICE SQUARE LANE VIRGINIA BEACH, VIRGINIA 23462
TEL: (757) 490-2300 FAX: (757) 499-9136
362 McLAWS CIRCLE, SUITE 1 WILLIAMSBURG, VIRGINIA 23185
TEL: (757) 903-4695 FAX: (757) 903-4469

