

140016692

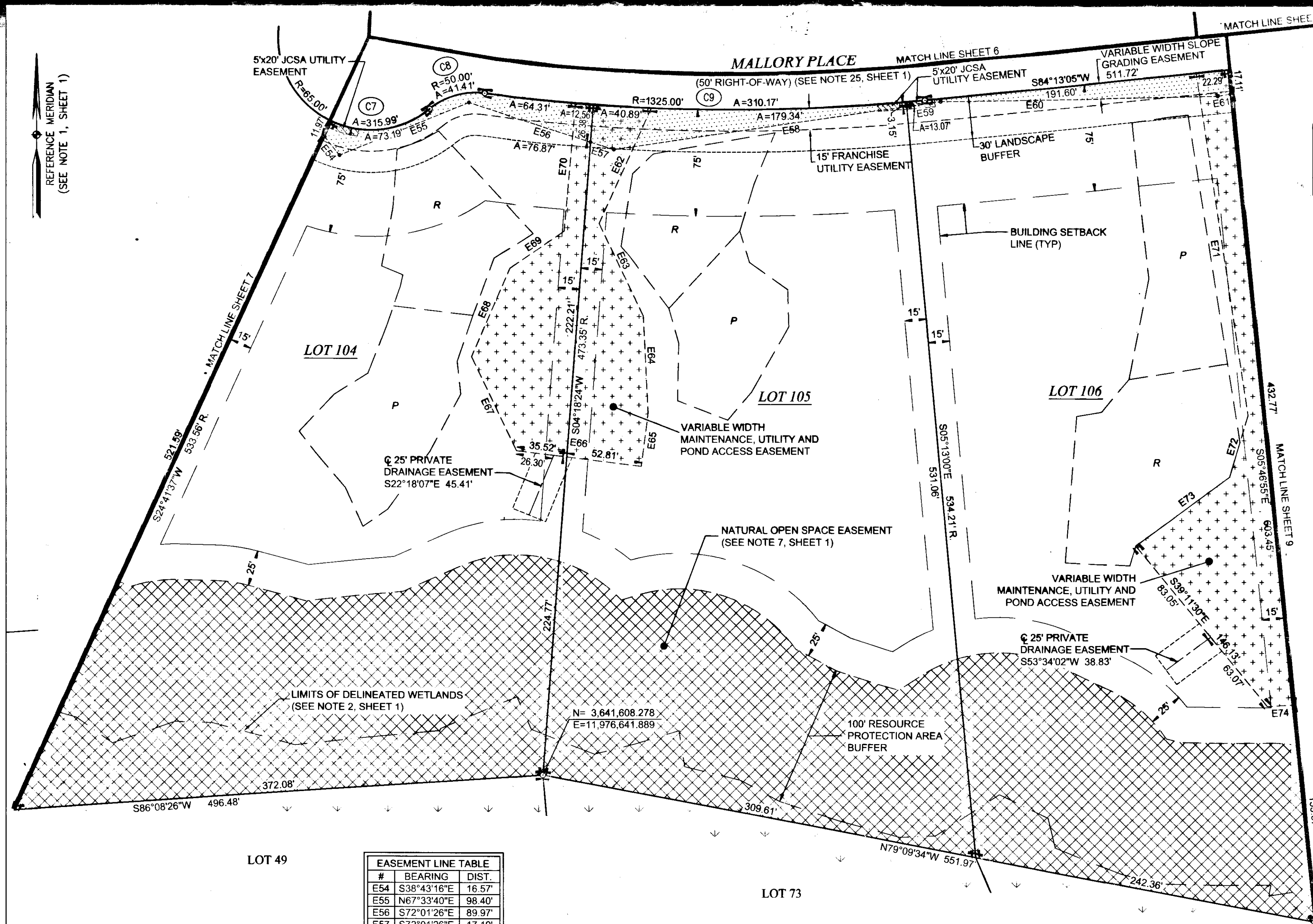


TABLE OF AREAS		
LOT	SQUARE FEET	ACRES
104	130,980	3.007
105	130,686	3.000
106	130,683	3.000

HATCH LEGEND

- DENOTES VARIABLE WIDTH SLOPE GRADING EASEMENT
- DENOTES 5x20' JCSA UTILITY EASEMENT
- VARIABLE WIDTH MAINTENANCE, UTILITY & POND ACCESS EASEMENT
- NATURAL OPEN SPACE EASEMENT HEREBY DEDICATED TO JAMES CITY COUNTY (SEE NOTE 7, SHEET 1)

SEPTIC DRAINFIELD LEGEND

P	R
PRIMARY DRAINFIELD	RESERVE DRAINFIELD

(SEE NOTE 8, SHEET 1)

EASEMENT LINE TABLE

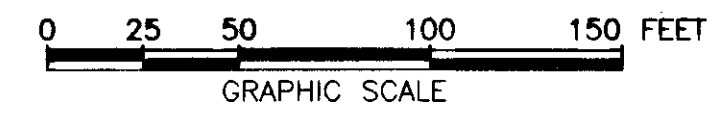
#	BEARING	DIST.
E54	S38°43'16"E	16.57'
E55	N67°33'40"E	98.40'
E56	S72°01'26"E	89.97'
E57	S72°01'26"E	17.19'
E58	N81°39'05"E	208.10'
E59	N81°39'05"E	24.05'
E60	N88°49'03"E	194.69'
E61	N80°53'56"E	8.91'
E62	S24°21'28"W	89.00'
E63	S25°27'23"E	72.15'
E64	S02°50'54"E	68.79'
E65	S07°24'00"W	37.59'
E66	N82°38'40"W	88.32'
E67	N25°42'38"W	73.12'
E68	N23°29'32"E	68.23'
E69	N55°41'54"E	45.94'
E70	N05°02'49"E	90.34'
E71	N08°35'59"W	243.97'
E72	N16°39'36"E	45.23'
E73	N53°39'51"E	81.84'
E74	S86°51'36"W	17.58'

CURVE TABLE

NO.	RADIUS	DELTA	ARC	TANGENT	CHORD	CH. BEARING
C7	65.00'	278°31'59"	315.99'	84.83'	84.83'	N09°26'42"E
C8	50.00'	47°27'08"	41.41'	21.98'	40.24'	S73°54'16"W
C9	1325.00'	13°24'45"	310.17'	155.80'	309.46'	N89°04'33"W



SUBDIVISION PLAT OF LIBERTY RIDGE
 BEING LOTS 87-89 & 91-95, SECTION 1-B AND LOTS 96-110, SECTION 2-B
 JAMES CITY COUNTY, VIRGINIA
 SCALE: 1"=50' JANUARY 7, 2014
 REVISED: JULY 21, 2014
ROUSE-SIRINE ASSOCIATES, LTD.
 LAND SURVEYORS & MAPPING CONSULTANTS
 www.rouse-sirine.com
 333 OFFICE SQUARE LANE VIRGINIA BEACH, VIRGINIA 23462
 TEL: (757) 490-2300 FAX: (757) 499-9136
 362 McLAWS CIRCLE, SUITE 1 WILLIAMSBURG, VIRGINIA 23185
 TEL: (757) 903-4695 FAX: (757) 903-4469



12 Large/Small Plat(s) Recorded herewith as 140016692

COMMONWEALTH OF VIRGINIA
 CITY OF WILLIAMSBURG & COUNTY OF JAMES CITY CIRCUIT COURT.
 THIS 10th DAY OF October, 2014.
 THE PLAT SHOWN HEREON WAS PRESENTED AND ADMITTED TO THE RECORD AS THE LAW DIRECTS. AT 10:52 AM/PM
 INSTRUMENT # 140016692

TESTE: Amy Storey OC
 BETSY B. WOOLRIDGE, CLERK