

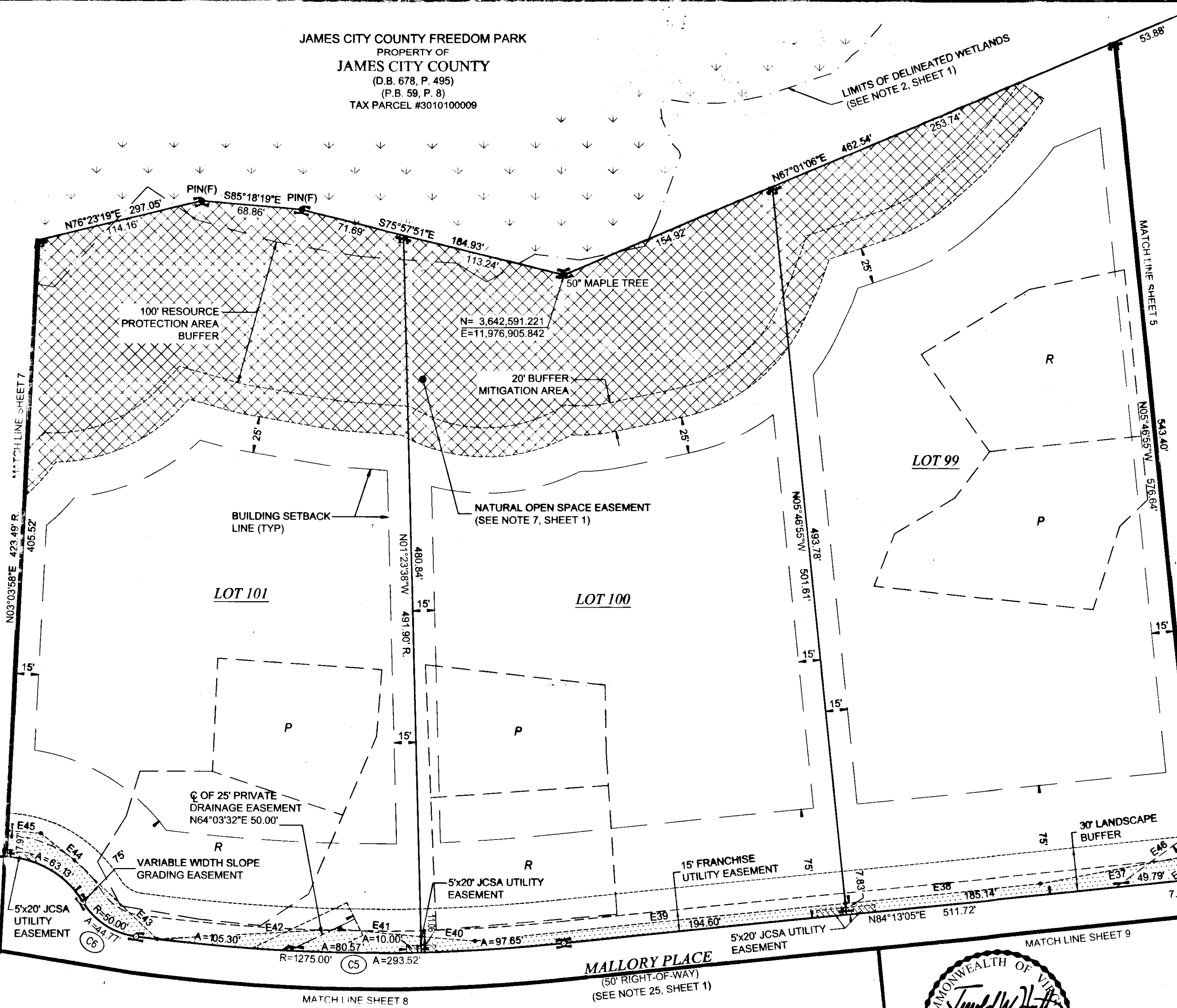
140016692

JAMES CITY COUNTY FREEDOM PARK
 PROPERTY OF
 JAMES CITY COUNTY
 (D.B. 678, P. 495)
 (P.B. 59, P. 8)
 TAX PARCEL #3010100009

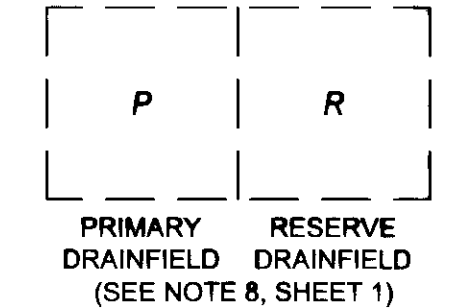
N= 3,642,771.814
 E=11,977,331.669

EASEMENT LINE TABLE		
#	BEARING	DIST.
E37	S79°22'57"W	108.63'
E38	S84°13'06"W	134.15'
E39	S84°13'06"W	254.97'
E40	N84°58'02"W	37.00'
E41	N84°58'02"W	55.30'
E42	S86°39'14"W	125.84'
E43	N46°17'29"W	78.36'
E44	N51°18'32"W	29.55'
E45	N85°22'57"W	22.18'
E46	N54°04'45"E	89.37'
E47	S54°04'45"W	8.63'

REFERENCE MERIDIAN
 (SEE NOTE 1, SHEET 1)



SEPTIC DRAINFIELD LEGEND



HATCH LEGEND

- DENOTES VARIABLE WIDTH SLOPE GRADING EASEMENT
- DENOTES 5x20' JCSA UTILITY EASEMENT
- DENOTES NATURAL OPEN SPACE EASEMENT HEREBY DEDICATED TO JAMES CITY COUNTY (SEE NOTE 7, SHEET 1)

VARIABLE WIDTH PRIVATE DRAINAGE EASEMENT

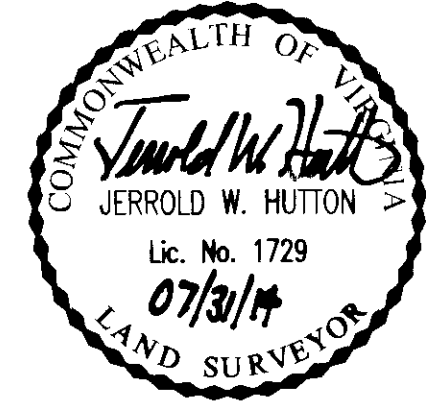
Large Small Plat(s) Recorded
 herewith as # 140016692

COMMONWEALTH OF VIRGINIA
 CITY OF WILLIAMSBURG & COUNTY OF JAMES CITY CIRCUIT COURT.
 THIS 10th DAY OF October, 2014.
 THE PLAT SHOWN HEREON WAS PRESENTED AND ADMITTED TO
 THE RECORD AS THE LAW DIRECTS. AT 10:52 AM PM
 INSTRUMENT # 140016692

TESTE: dmj Storey DC
 BETSY B. WOOLRIDGE, CLERK

CURVE TABLE						
NO.	RADIUS	DELTA	ARC	TANGENT	CHORD	CH. BEARING
C5	1275.00'	13°11'25"	293.52'	147.41'	292.87'	S89°11'13"E
C6	50.00'	51°18'11"	44.77'	24.01'	43.29'	S56°56'25"E
C7	65.00'	278°31'59"	315.99'		84.83'	N09°26'42"E

TABLE OF AREAS		
LOT	SQUARE FEET	ACRES
99	130,682	3.000
100	130,695	3.000
101	130,724	3.001



SUBDIVISION PLAT
 OF
LIBERTY RIDGE
 BEING LOTS 87-89 & 91-95, SECTION 1-B
 AND LOTS 96-110, SECTION 2-B
 JAMES CITY COUNTY, VIRGINIA
 SCALE: 1"=50' JANUARY 7, 2014
 REVISED: JULY 21, 2014

ROUSE-SIRINE ASSOCIATES, LTD.
 LAND SURVEYORS & MAPPING CONSULTANTS
 www.rouse-sirine.com
 333 OFFICE SQUARE LANE 362 McLAWS CIRCLE, SUITE 1
 VIRGINIA BEACH, VIRGINIA 23462 WILLIAMSBURG, VIRGINIA 23185
 TEL: (757) 490-2300 TEL: (757) 903-4695
 FAX: (757) 499-9136 FAX: (757) 903-4469

