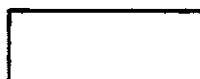



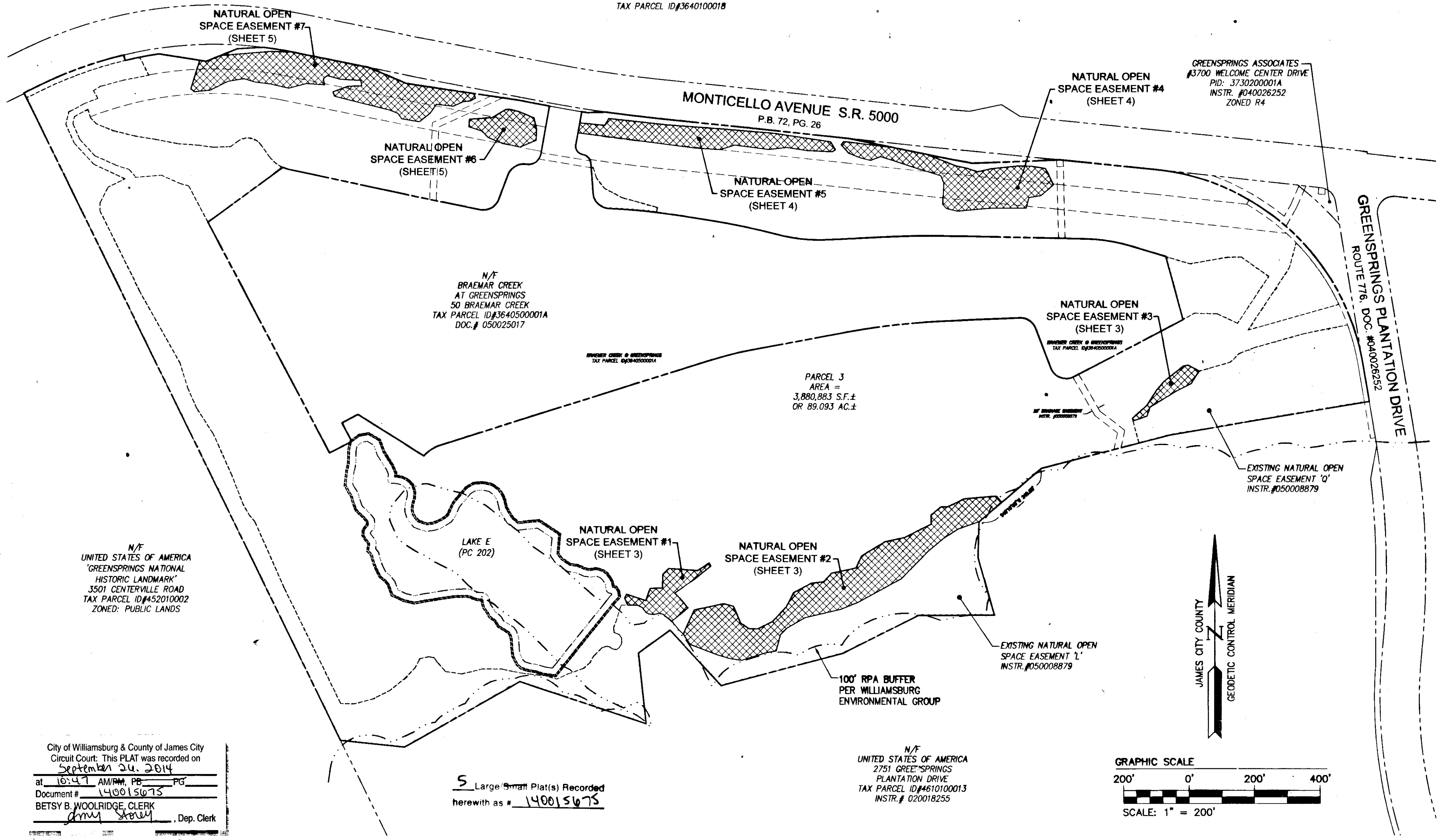
LEGEND:

 EXISTING NATURAL OPEN SPACE EASEMENT (INSTR. #050008879)

 NATURAL OPEN SPACE EASEMENT AREAS HEREBY DEDICATED TO JAMES CITY COUNTY

NATURAL OPEN SPACE EASEMENT #1	16,360 S.F.	0.378 AC.
NATURAL OPEN SPACE EASEMENT #2	99,238 S.F.	2.278 AC.
NATURAL OPEN SPACE EASEMENT #3	8,309 S.F.	0.191 AC.
NATURAL OPEN SPACE EASEMENT #4	51,235 S.F.	1.176 AC.
NATURAL OPEN SPACE EASEMENT #5	38,249 S.F.	0.878 AC.
NATURAL OPEN SPACE EASEMENT #6	15,306 S.F.	0.351 AC.
NATURAL OPEN SPACE EASEMENT #7	73,028 S.F.	1.678 AC.
TOTAL NATURAL OPEN SPACE EASEMENT	301,725 S.F.	6.928 AC.

N/F
WILLIAMSBURG NATIONAL LLC
PARCEL F
'LEGACY GOLF LINKS @ GREENSPRINGS'
3700 CENTERVILLE ROAD
TAX PARCEL ID#364010001B

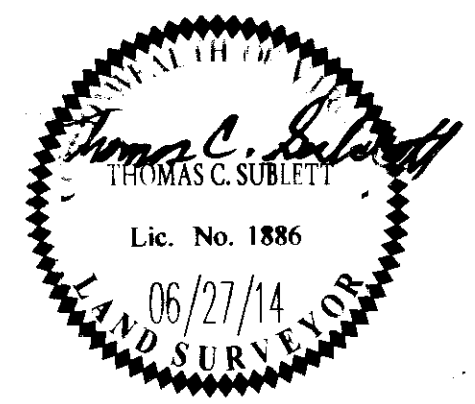


City of Williamsburg & County of James City
Circuit Court: This PLAT was recorded on
September 24, 2014
at 10:47 AM/PM, PB PG
Document # 140015675
BETSY B. WOOLRIDGE, CLERK
[Signature] Dep. Clerk

5 Large Small Plat(s) Recorded
herewith as # 140015675

N/F
UNITED STATES OF AMERICA
2751 GREE SPRINGS
PLANTATION DRIVE
TAX PARCEL ID#4610100013
INSTR. # 020018255

Rev.	Date	Description	Revised By



AES
CONSULTING ENGINEERS
Hampton Roads | Central Virginia | Middle Peninsula
5248 Olde Towne Road, Suite 1
Williamsburg, Virginia 23188
Phone: (757) 253-0040
Fax: (757) 220-8994
www.aesva.com

**OFFSITE NATURAL OPEN SPACE EASEMENT
FOR
THE SETTLEMENT AT POWHATAN CREEK
TO BE DEDICATED TO
JAMES CITY COUNTY**

BERKELEY DISTRICT JAMES CITY COUNTY VIRGINIA

Project Contacts:	TRS/TCS
Project Number:	8656-22
Scale:	1"=200'
Date:	06-27-14
Sheet Number	2 of 5