

140014016

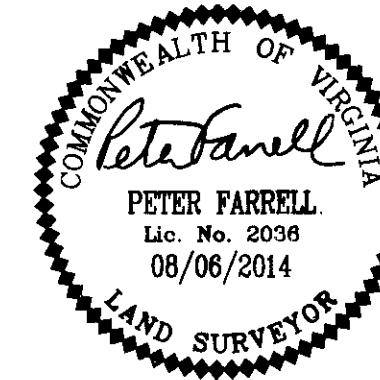
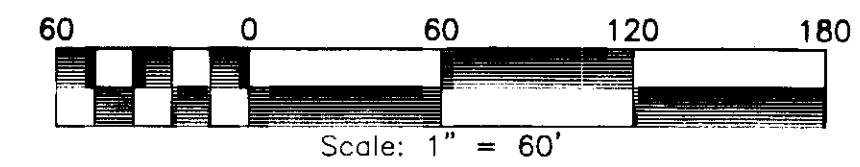
SUBDIVISION OF  
CHESTNUT GROVE

ROBERTS DISTRICT JAMES CITY COUNTY VIRGINIA  
DATE: 08/06/2014 JOB #07-313

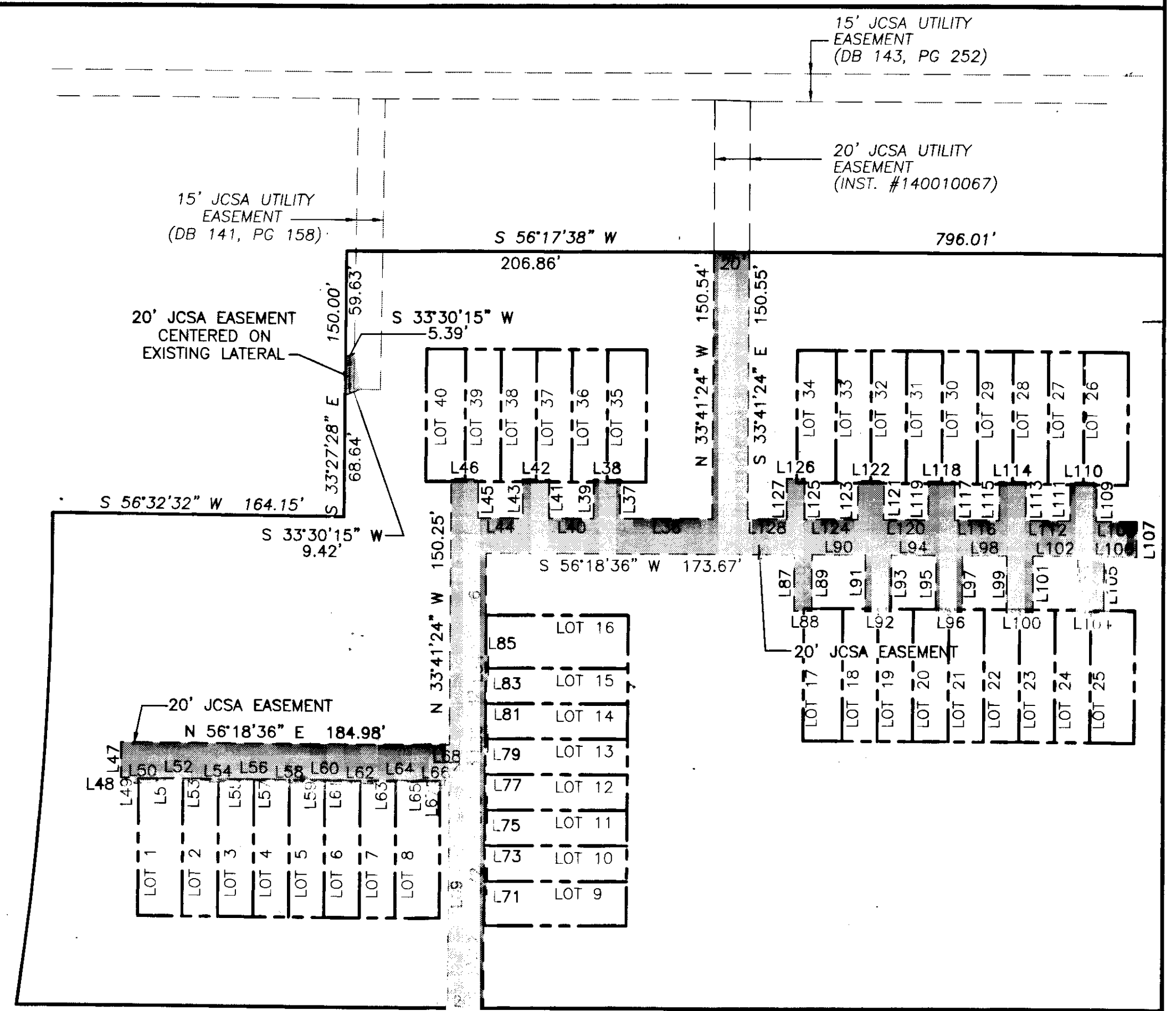
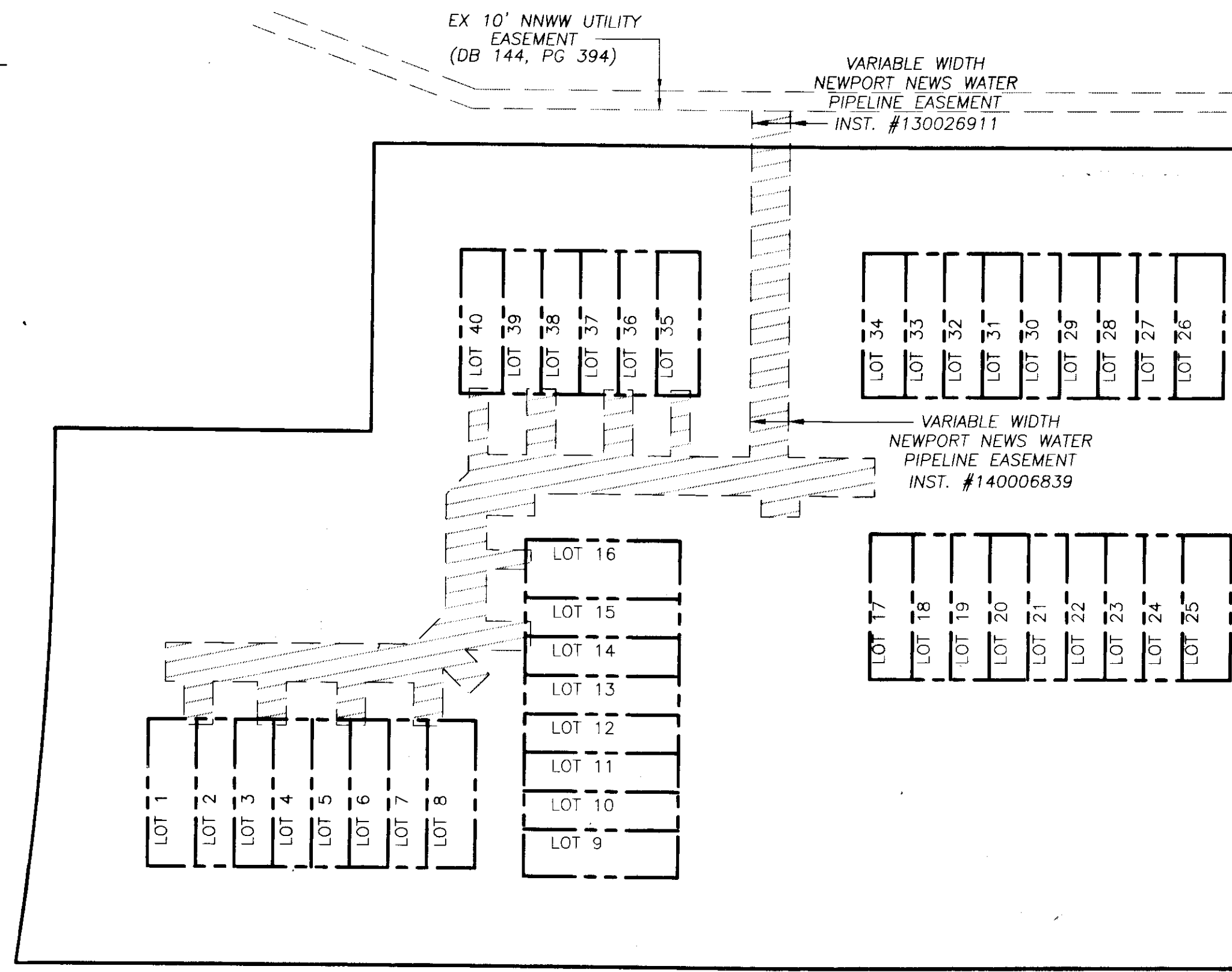
**LandTech Resources, Inc.**  
Surveying • Engineering • GPS  
3925 Midlands Road, Williamsburg, Virginia 23188  
Phone: (757) 565-1677 Fax: (757) 565-0782  
web: landtechresources.com

SHEET 3 OF 3

JCC-S-0011-2014



LINE	BEARING	DISTANCE	LINE	BEARING	DISTANCE	LINE	BEARING	DISTANCE
L36	N 56°18'36" E	51.97'	L70	S 33°41'24" E	64.07'	L104	S 56°18'36" W	14.93'
L37	S 33°41'24" E	21.86'	L71	S 56°18'36" W	1.71'	L105	S 33°41'24" E	31.88'
L38	N 56°18'36" E	14.93'	L72	S 33°41'24" E	14.93'	L106	S 56°18'36" W	18.41'
L39	N 33°41'24" W	21.86'	L73	N 56°18'36" E	1.71'	L107	S 33°41'24" E	20.00'
L40	N 56°18'36" E	25.07'	L74	S 33°41'24" E	25.07'	L108	N 56°18'36" E	22.93'
L41	S 33°41'24" E	21.86'	L75	S 56°18'36" W	1.71'	L109	S 33°41'24" E	21.86'
L42	N 56°18'36" E	14.93'	L76	S 33°41'24" E	14.93'	L110	N 56°18'36" E	14.93'
L43	N 33°41'24" W	21.86'	L77	N 56°18'36" E	1.71'	L111	N 33°41'24" W	21.86'
L44	N 56°18'36" E	25.07'	L78	S 33°41'24" E	25.07'	L112	N 56°18'36" E	25.07'
L45	S 33°41'24" E	21.86'	L79	S 56°18'36" W	1.71'	L113	S 33°41'24" E	21.86'
L46	N 56°18'36" E	15.22'	L80	S 33°41'24" E	14.93'	L114	N 56°18'36" E	14.93'
L47	N 33°41'24" W	20.00'	L81	N 56°18'36" E	1.71'	L115	N 33°41'24" W	21.86'
L48	S 56°18'36" W	7.48'	L82	S 33°41'24" E	25.07'	L116	N 56°18'36" E	25.07'
L49	N 33°41'24" W	3.00'	L83	S 56°18'36" W	1.71'	L117	S 33°41'24" E	21.86'
L50	S 56°18'36" W	10.00'	L84	S 33°41'24" E	14.93'	L118	N 56°18'36" E	14.93'
L51	S 33°41'24" E	3.00'	L85	N 56°18'36" E	1.71'	L119	N 33°41'24" W	21.86'
L52	S 56°18'36" W	30.00'	L86	S 33°41'24" E	57.53'	L120	N 56°18'36" E	25.07'
L53	N 33°41'24" W	1.86'	L87	N 33°41'24" W	31.94'	L121	S 33°41'24" E	21.86'
L54	S 56°18'36" W	14.93'	L88	S 56°18'36" W	10.00'	L122	N 56°18'36" E	14.93'
L55	S 33°41'24" E	1.86'	L89	S 33°41'24" E	31.94'	L123	N 33°41'24" W	21.86'
L56	S 56°18'36" W	25.07'	L90	S 56°18'36" W	30.07'	L124	N 56°18'36" E	30.07'
L57	N 33°41'24" W	1.86'	L91	N 33°41'24" W	31.94'	L125	S 33°41'24" E	23.00'
L58	S 56°18'36" W	14.93'	L92	S 56°18'36" W	14.93'	L126	N 56°18'36" E	10.00'
L59	S 33°41'24" E	1.86'	L93	S 33°41'24" E	31.94'	L127	N 33°41'24" W	23.00'
L60	S 56°18'36" W	25.07'	L94	S 56°18'36" W	25.07'	L128	N 56°18'36" E	21.96'
L61	N 33°41'24" W	1.86'	L95	N 33°41'24" W	31.92'			
L62	S 56°18'36" W	14.93'	L96	S 56°18'36" W	14.93'			
L63	S 33°41'24" E	1.86'	L97	S 33°41'24" E	31.92'			
L64	S 56°18'36" W	30.06'	L98	S 56°18'36" W	25.07'			
L65	N 33°41'24" W	3.00'	L99	N 33°41'24" W	31.90'			
L66	S 56°18'36" W	10.00'	L100	S 56°18'36" W	14.93'			
L67	S 33°41'24" E	3.00'	L101	S 34°06'25" E	31.90'			
L68	S 56°18'36" W	2.50'	L102	S 56°18'36" W	25.30'			
L69	N 33°41'24" W	128.13'	L103	N 33°41'24" W	31.88'			



STATE OF VIRGINIA, JAMES CITY COUNTY  
IN THE CLERKS OFFICE OF THE CIRCUIT COURT FOR THE COUNTY OF JAMES CITY THIS 2<sup>nd</sup> DAY OF August, 2014.  
THIS PLAT WAS PRESENTED AND ADMITTED TO RECORD AS THE LAW DIRECTS AT 2:08 pm  
INSTRUMENT # 140014016  
TESTE DESY B. WOOLIDGE, CLERK John Mark DC

3 Large Small Plat(s) Recorded  
herewith # 140014016