

14004016

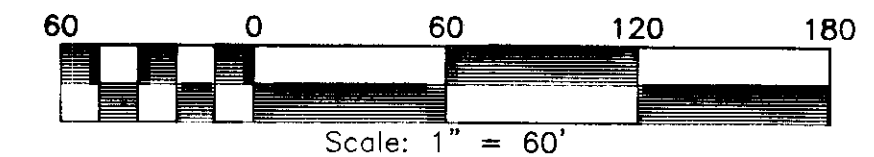
SUBDIVISION OF
CHESTNUT GROVE

ROBERTS DISTRICT JAMES CITY COUNTY VIRGINIA
DATE: 08/06/2014 JOB #07-313

LandTech Resources, Inc.
Surveying • Engineering • GPS
3925 Midlands Road, Williamsburg, Virginia 23188
Phone: (757) 565-1677 Fax: (757) 565-0782
web: landtechresources.com

SHEET 2 OF 3

JCC-S-0011-2014

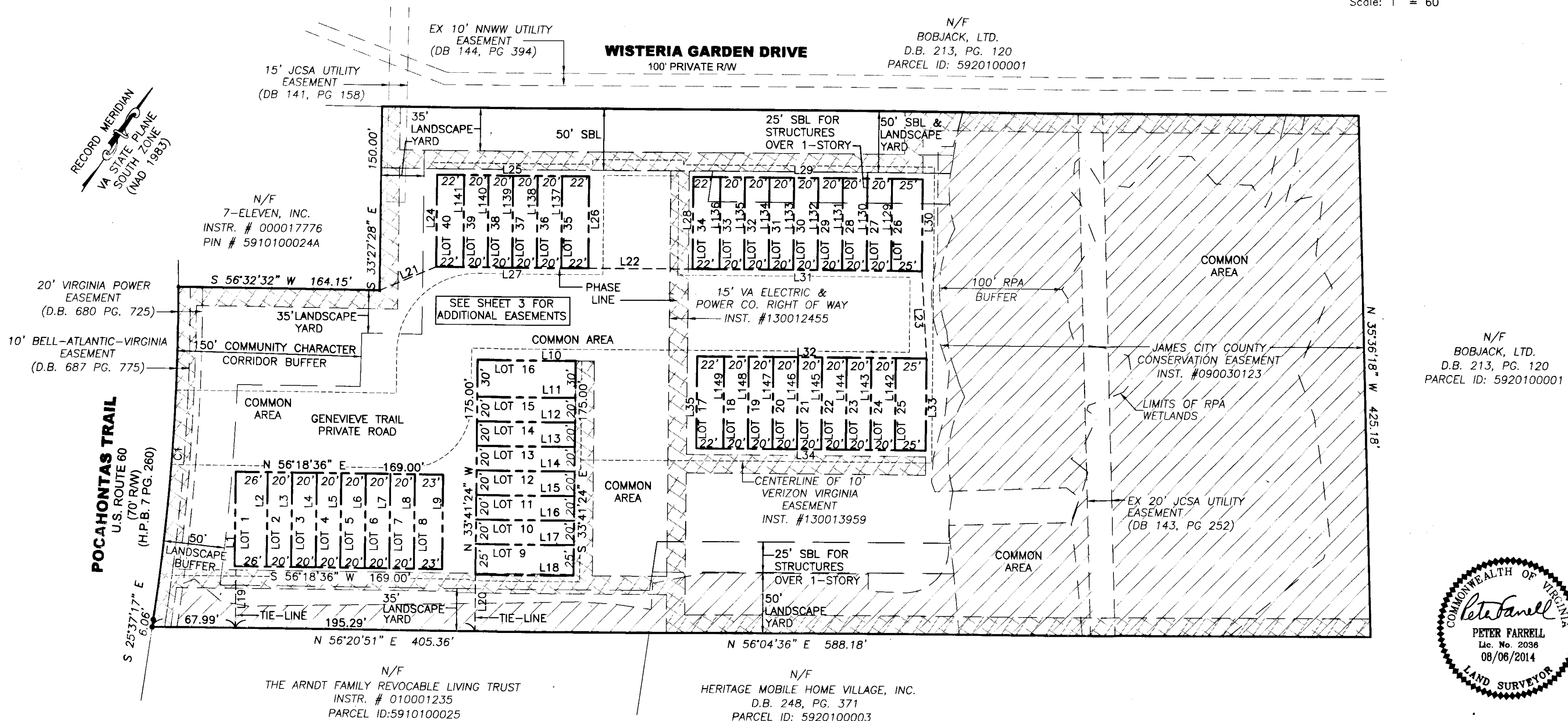


LINE	BEARING	DISTANCE
L1	N 33°41'24" W	77.00'
L2	S 33°41'24" E	77.00'
L3	N 33°41'24" W	77.00'
L4	S 33°41'24" E	77.00'
L5	N 33°41'24" W	77.00'
L6	S 33°41'24" E	77.00'
L7	N 33°41'24" W	77.00'
L8	S 33°41'24" E	77.00'
L9	N 33°41'24" W	77.00'
L10	N 56°18'36" E	80.00'
L11	S 56°18'36" W	80.00'
L12	N 56°18'36" E	80.00'
L13	S 56°18'36" W	80.00'
L14	N 56°18'36" E	80.00'
L15	S 56°18'36" W	80.00'
L16	N 56°18'36" E	80.00'
L17	S 56°18'36" W	80.00'
L18	N 56°18'36" E	80.00'
L19	N 33°41'24" W	47.52'
L20	N 33°41'24" W	46.54'

LINE	BEARING	DISTANCE
L24	S 33°41'24" E	75.00'
L25	N 56°18'36" E	124.00'
L26	S 33°41'24" E	75.00'
L27	S 56°18'36" W	124.00'
L28	S 33°41'24" E	75.00'
L29	N 56°18'36" E	187.00'
L30	S 33°41'24" E	75.00'
L31	N 56°18'36" E	187.00'
L32	N 56°18'36" E	187.00'
L33	S 33°41'24" E	75.00'
L34	S 56°18'36" W	187.00'
L35	S 33°41'24" E	75.00'
L129	S 33°41'24" E	75.00'
L130	S 33°41'24" E	75.00'
L131	S 33°41'24" E	75.00'
L132	S 33°41'24" E	75.00'
L133	S 33°41'24" E	75.00'
L134	S 33°41'24" E	75.00'
L135	S 33°41'24" E	75.00'
L136	S 33°41'24" E	75.00'

LINE	BEARING	DISTANCE
L137	S 33°41'24" E	75.00'
L138	S 33°41'24" E	75.00'
L139	S 33°41'24" E	75.00'
L140	S 33°41'24" E	75.00'
L141	S 33°41'24" E	75.00'
L142	S 33°41'24" E	75.00'
L143	S 33°41'24" E	75.00'
L144	S 33°41'24" E	75.00'
L145	S 33°41'24" E	75.00'
L146	S 33°41'24" E	75.00'
L147	S 33°41'24" E	75.00'
L148	S 33°41'24" E	75.00'
L149	S 33°41'24" E	75.00'

TIE LINES LINE TABLE		
LINE	BEARING	DISTANCE
L21	N 32°47'44" E	50.16'
L22	N 56°16'33" E	84.93'
L23	S 34°58'14" E	71.02'



CURVE	RADIUS	ARC	CHORD	CHORD BEARING	DELTA
C1	1797.95'	272.36'	272.10'	N 29°57'39" W	8°40'46"

3 Large/Small Plat(s) Recorded
herewith as # 14004016

STATE OF VIRGINIA JAMES CITY COUNTY
IN THE CLERKS OFFICE OF THE CIRCUIT COURT FOR THE COUNTY OF JAMES CITY THIS 29th DAY OF Aug, 2014.
THIS PLAT WAS PRESENTED AND ADMITTED TO RECORD AS THE LAW DIRECTS AT 2:08 PM.
INSTRUMENT # 14004016
TESTE PETER FARRELL John Munk DC

