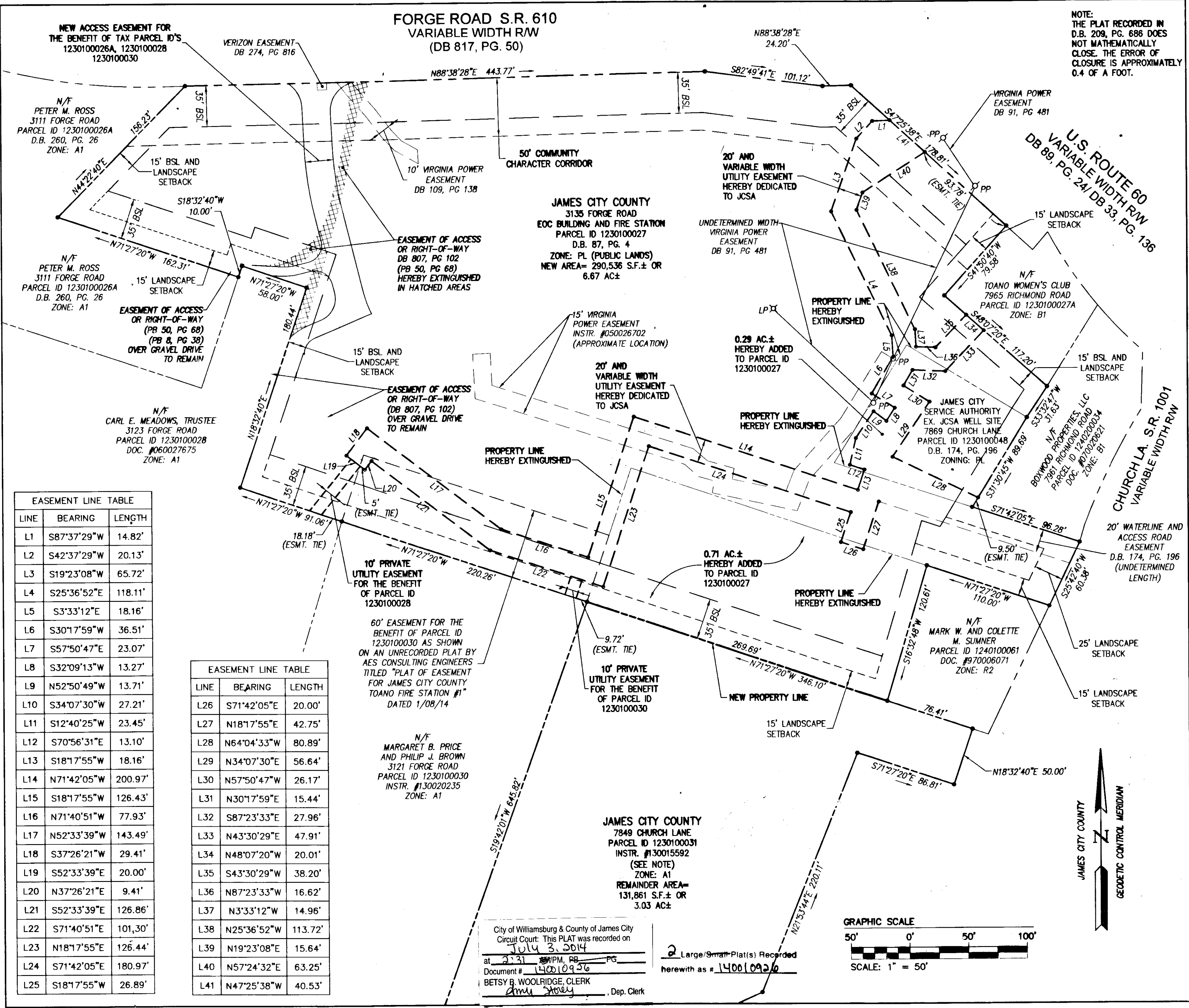


140010926

**FORGE ROAD S.R. 610
VARIABLE WIDTH R/W
(DB 817, PG. 50)**

NOTE:
THE PLAT RECORDED IN
D.B. 209, PG. 686 DOES
NOT MATHEMATICALLY
CLOSE. THE ERROR OF
CLOSURE IS APPROXIMATELY
0.4 OF A FOOT.



EASEMENT LINE TABLE

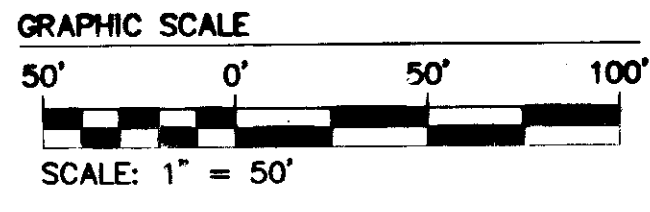
LINE	BEARING	LENGTH
L1	S87°37'29"W	14.82'
L2	S42°37'29"W	20.13'
L3	S19°23'08"W	65.72'
L4	S25°36'52"E	118.11'
L5	S3°33'12"E	18.16'
L6	S30°17'59"W	36.51'
L7	S57°50'47"E	23.07'
L8	S32°09'13"W	13.27'
L9	N52°50'49"W	13.71'
L10	S34°07'30"W	27.21'
L11	S12°40'25"W	23.45'
L12	S70°56'31"E	13.10'
L13	S18°17'55"W	18.16'
L14	N71°42'05"W	200.97'
L15	S18°17'55"W	126.43'
L16	N71°40'51"W	77.93'
L17	N52°33'39"W	143.49'
L18	S37°26'21"W	29.41'
L19	S52°33'39"E	20.00'
L20	N37°26'21"E	9.41'
L21	S52°33'39"E	126.86'
L22	S71°40'51"E	101.30'
L23	N18°17'55"E	126.44'
L24	S71°42'05"E	180.97'
L25	S18°17'55"W	26.89'

EASEMENT LINE TABLE

LINE	BEARING	LENGTH
L26	S71°42'05"E	20.00'
L27	N18°17'55"E	42.75'
L28	N64°04'33"W	80.89'
L29	N34°07'30"E	56.64'
L30	N57°50'47"W	26.17'
L31	N30°17'59"E	15.44'
L32	S87°23'33"E	27.96'
L33	N43°30'29"E	47.91'
L34	N48°07'20"W	20.01'
L35	S43°30'29"W	38.20'
L36	N87°23'33"W	16.62'
L37	N3°33'12"W	14.96'
L38	N25°36'52"W	113.72'
L39	N19°23'08"E	15.64'
L40	N57°24'32"E	63.25'
L41	N47°25'38"W	40.53'

City of Williamsburg & County of James City
Circuit Court: This PLAT was recorded on
July 3, 2014
at 2:31 PM, PG. 50
Document # 140010926
BETSY B. WOOLRIDGE, CLERK
amy stacy Dep. Clerk

2 Large/Small Plat(s) Recorded
herewith as # 140010926



Revised By	Date	Description



5248 Old Towne Road, Suite 1
Williamsburg, Virginia 23108
Phone: (757) 255-0040
Fax: (757) 232-8904
www.aesve.com

AES
CONSULTING ENGINEERS

Hampton Roads | Central Virginia | Middle Peninsula

PLAT OF BOUNDARY LINE ADJUSTMENT
AND LOT LINE EXTINGUISHMENT
BETWEEN PROPERTIES OWNED BY
THE JAMES CITY SERVICE AUTHORITY AND
THE JAMES CITY COUNTY
JAMES CITY COUNTY
AND TOANO WOMEN'S CLUB
STONEHOUSE DISTRICT JAMES CITY COUNTY VIRGINIA