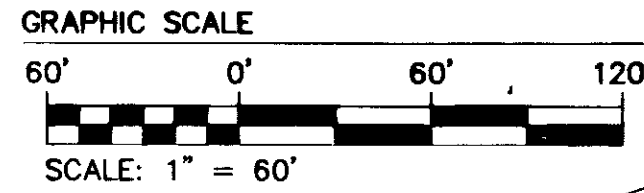
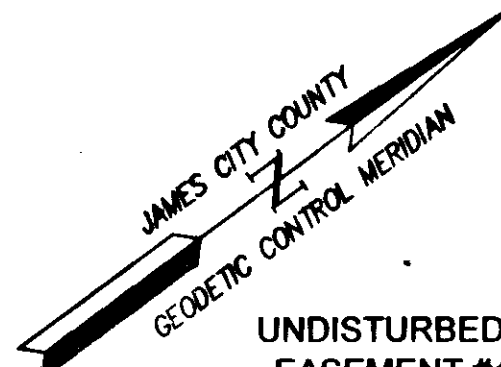
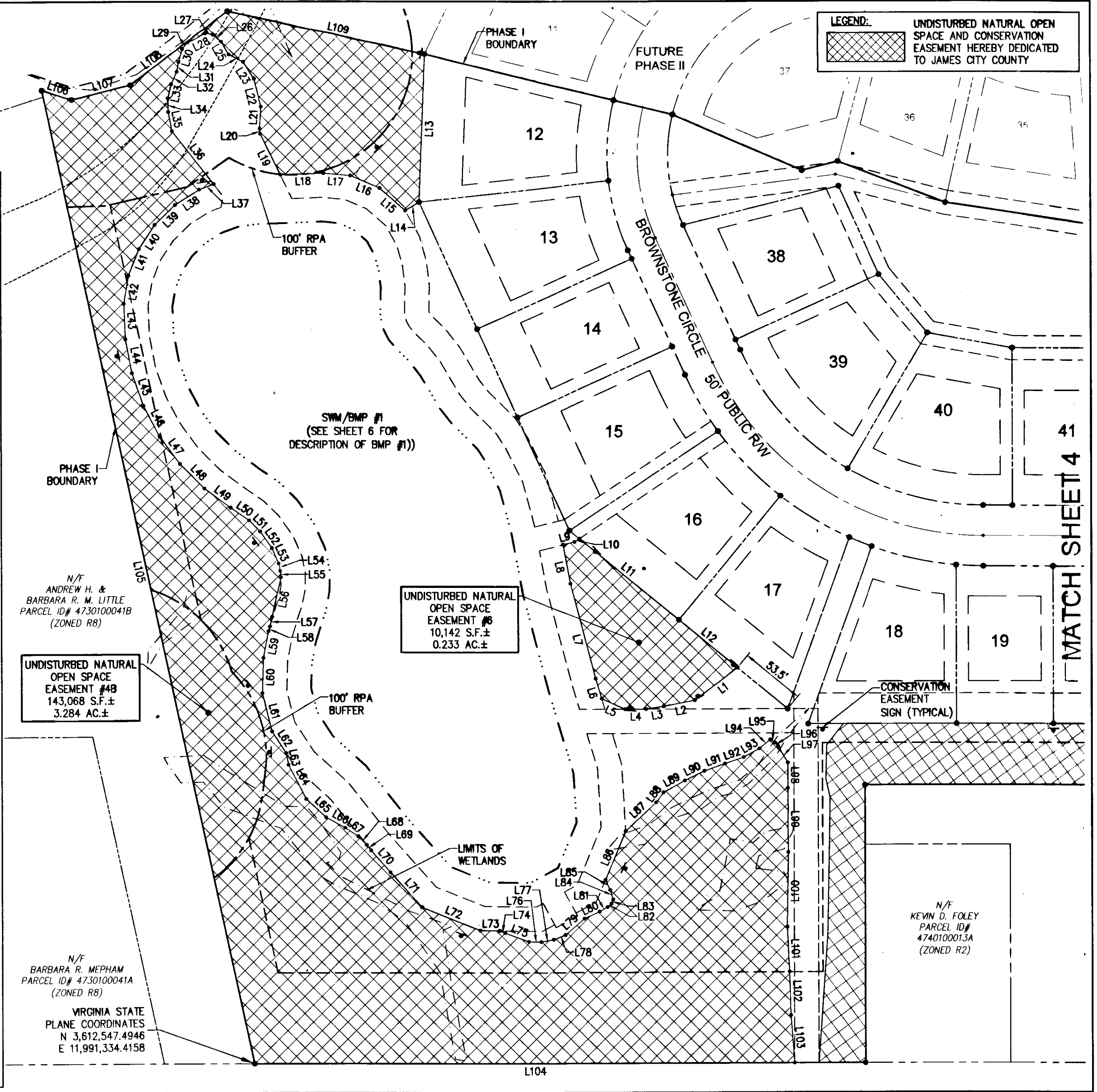


140010816



UNDISTURBED NATURAL OPEN SPACE EASEMENT #4B AND #6 LINE TABLES

LINE TABLE			LINE TABLE			LINE TABLE		
LINE	BEARING	LENGTH	LINE	BEARING	LENGTH	LINE	BEARING	LENGTH
L1	N0°45'43"W	44.19'	L38	N4°07'22"E	23.62'	L75	S56°56'13"W	20.83'
L2	N25°27'17"E	26.11'	L39	N7°57'52"W	23.62'	L76	S37°26'54"W	10.30'
L3	N27°19'39"E	14.83'	L40	N20°03'07"W	23.62'	L77	S25°19'09"W	10.40'
L4	N36°24'45"E	17.27'	L41	N32°08'22"W	23.62'	L78	S15°49'02"W	10.40'
L5	N61°14'23"E	21.16'	L42	N44°13'37"W	23.48'	L79	S4°12'05"E	20.60'
L6	S70°14'00"E	17.33'	L43	N55°50'43"W	29.43'	L80	S11°16'42"W	13.62'
L7	S68°13'52"E	81.14'	L44	N64°20'31"W	28.48'	L81	S7°22'37"W	7.41'
L8	S64°08'31"E	32.69'	L45	N72°50'20"W	28.48'	L82	S6°12'27"E	4.40'
L9	S23°03'51"W	5.70'	L46	N81°20'08"W	28.48'	L83	S30°28'57"E	3.76'
L10	S2°40'49"W	4.82'	L47	N89°49'57"W	28.48'	L84	S71°09'31"E	8.25'
L11	S75°51'51"W	105.97'	L48	S81°40'15"W	28.48'	L85	S77°43'54"E	9.14'
L12	S75°51'51"W	62.46'	L49	S73°10'26"W	26.65'	L86	S30°52'43"E	43.38'
L13	N51°21'25"W	122.16'	L50	S70°44'23"W	18.68'	L87	S6°26'05"E	24.28'
L14	N4°50'55"E	13.32'	L51	S81°24'01"W	13.00'	L88	S17°29'10"E	10.24'
L15	N77°39'11"E	28.10'	L52	N88°51'03"W	16.67'	L89	S7°31'38"W	20.07'
L16	N59°38'15"E	26.25'	L53	N77°16'44"W	13.89'	L90	S10°09'19"W	17.96'
L17	N41°37'19"E	22.17'	L54	N64°48'57"W	6.30'	L91	S17°04'35"W	18.04'
L18	N34°13'10"E	22.82'	L55	N60°20'23"W	5.22'	L92	S17°31'54"W	16.30'
L19	S79°33'54"E	37.66'	L56	N40°48'18"W	33.71'	L93	S7°23'56"W	14.97'
L20	S60°46'42"E	4.38'	L57	N40°48'18"W	8.10'	L94	S3°41'18"E	11.47'
L21	S50°06'44"E	17.98'	L58	N36°46'07"W	4.15'	L95	S70°22'37"W	4.79'
L22	S68°00'14"E	23.83'	L59	N42°39'27"W	22.36'	L96	S85°43'14"W	4.00'
L23	S85°47'48"E	16.56'	L60	N51°51'14"W	29.22'	L97	N84°00'37"W	15.64'
L24	N63°11'03"E	13.21'	L61	N67°37'57"W	32.53'	L98	N53°39'51"W	21.07'
L25	S83°31'18"E	12.46'	L62	N86°33'15"W	21.26'	L99	N53°47'56"W	52.83'
L26	N74°41'43"E	8.72'	L63	N64°35'29"W	9.97'	L100	N52°38'28"W	61.64'
L27	N45°10'20"E	6.47'	L64	N80°52'57"W	31.66'	L101	N56°23'08"W	37.14'
L28	N9°38'39"E	16.16'	L65	S79°14'57"W	22.20'	L102	N55°25'52"W	35.80'
L29	N13°28'34"W	6.78'	L66	S65°09'08"W	17.92'	L103	N57°51'22"W	39.56'
L30	N37°18'44"W	11.09'	L67	S70°02'46"W	12.91'	L104	N36°24'46"E	445.38'
L31	N43°08'20"W	8.22'	L68	S81°51'35"W	9.98'	L106	S53°55'43"W	25.64'
L32	N29°26'00"W	11.26'	L69	S88°12'40"W	5.73'	L107	S22°28'17"W	49.91'
L33	N40°05'16"W	11.90'	L70	S84°39'44"W	24.16'	L108	S0°40'56"E	100.44'
L34	N55°01'39"W	11.37'	L71	S84°39'44"W	38.86'	L109	S48°40'40"W	166.41'
L35	N64°46'00"W	16.08'	L72	S58°11'59"W	51.64'			
L36	S88°31'18"W	44.92'	L73	S36°59'27"W	16.07'			
L37	N16°12'37"E	12.71'	L74	S58°02'08"W	4.82'			



N/F
ANDREW H. &
BARBARA R. M. LITTLE
PARCEL ID# 4730100041B
(ZONED R8)

UNDISTURBED NATURAL
OPEN SPACE
EASEMENT #4B
143,068 S.F. ±
3.284 AC. ±

N/F
BARBARA R. MEPHAM
PARCEL ID# 4730100041A
(ZONED R8)

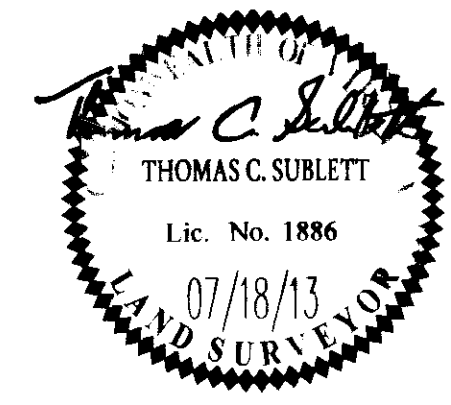
VIRGINIA STATE
PLANE COORDINATES
N 3,612,547.4946
E 11,991,334.4158

LEGEND:
UNDISTURBED NATURAL OPEN SPACE AND CONSERVATION EASEMENT HEREBY DEDICATED TO JAMES CITY COUNTY

MATCH SHEET 4

City of Williamsburg & County of James City
Circuit Court: This PLAT was recorded on
July 2, 2014
at 3:47 AM/PM, PG. PG.
Document # 140010816
BETSY B. WOOLRIDGE, CLERK
Amy Stray, Dep. Clerk

6 Large/Small Plat(s) Recorded	herewith as # 140010816
Revised By	JFS
Date	Revised By
Description	



AES
CONSULTING ENGINEERS
Hampton Roads | Central Virginia | Middle Peninsula
5248 Old Towne Road, Suite 1
Williamsburg, Virginia 23188
Phone: (757) 253-0040
Fax: (757) 220-8994
www.aesva.com

SUBDIVISION PLAT
PHASE I, LOTS 12-27 AND 38-46
THE COTTAGES AT STONE HAVEN
OWNER/DEVELOPER: NOL, L.L.C.
BERKELEY DISTRICT JAMES CITY COUNTY VIRGINIA

Project Contacts	TCS
Project Number:	9700-02
Scale:	Date:
1"=60'	07/18/13
Sheet Number	
5 of 6	