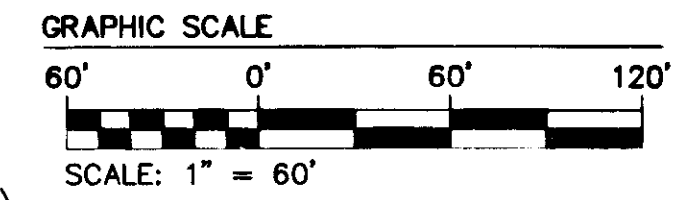
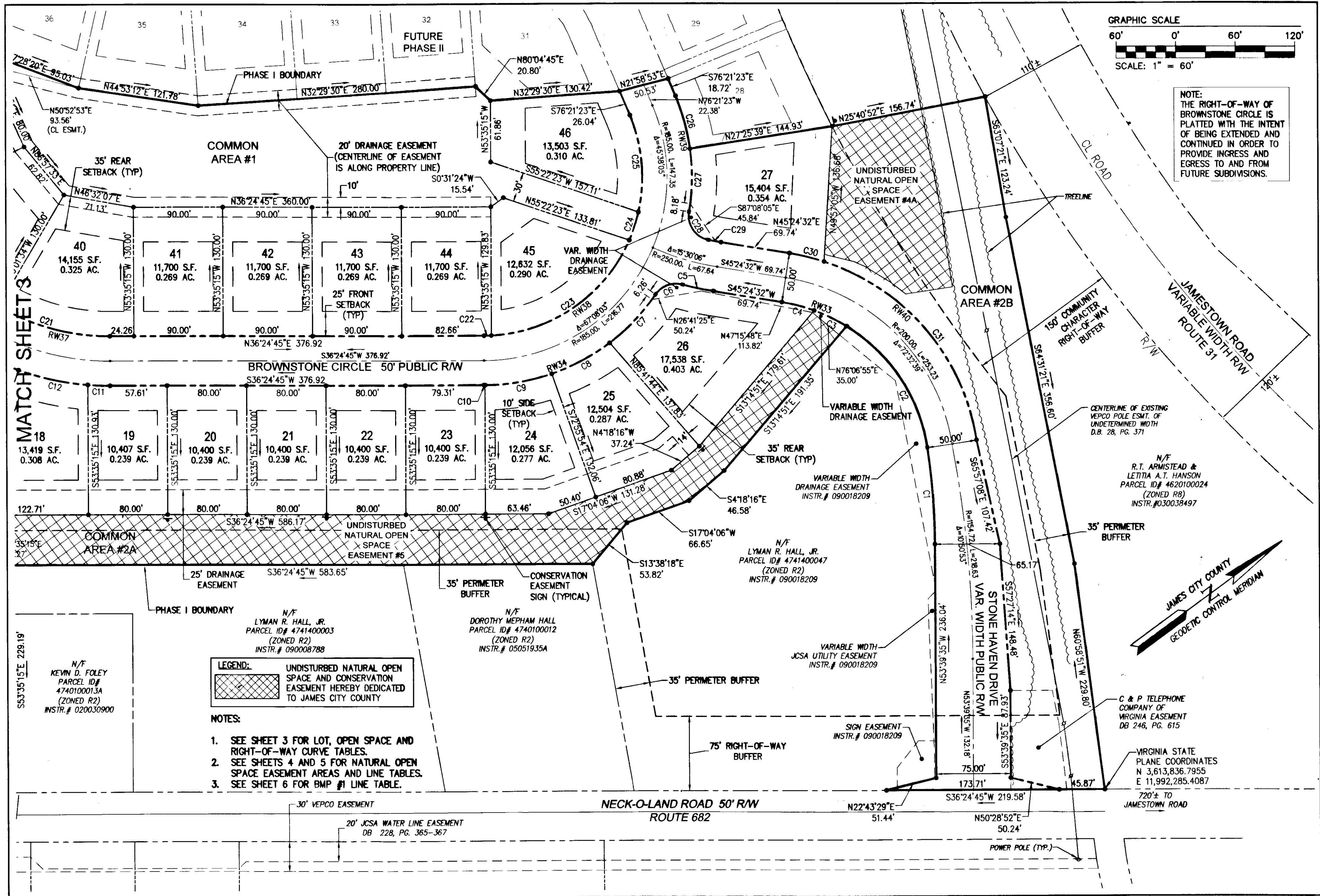


140010816



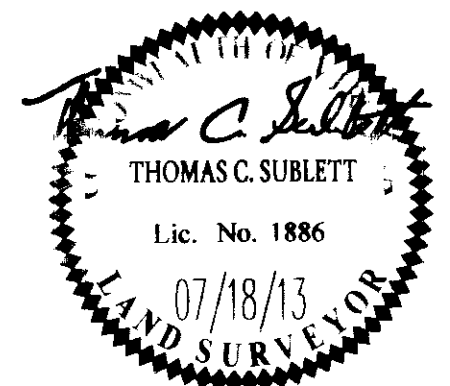
NOTE: THE RIGHT-OF-WAY OF BROWNSTONE CIRCLE IS PLATTED WITH THE INTENT OF BEING EXTENDED IN ORDER TO PROVIDE INGRESS AND EGRESS TO AND FROM FUTURE SUBDIVISIONS.



LEGEND: UNDISTURBED NATURAL OPEN SPACE AND CONSERVATION EASEMENT HEREBY DEDICATED TO JAMES CITY COUNTY

- NOTES: 1. SEE SHEET 3 FOR LOT, OPEN SPACE AND RIGHT-OF-WAY CURVE TABLES. 2. SEE SHEETS 4 AND 5 FOR NATURAL OPEN SPACE EASEMENT AREAS AND LINE TABLES. 3. SEE SHEET 6 FOR BMP #1 LINE TABLE.

City of Williamsburg & County of James City Circuit Court: This PLAT was recorded on July 2, 2014 at 3:47 PM, PG 140010816. Document # 140010816. BETSY B. WOOLRIDGE, CLERK. JFS



AES CONSULTING ENGINEERS, 5248 Old Towne Road, Suite 1, Williamsburg, Virginia 23188. Phone: (757) 253-0040. Fax: (757) 220-8994. www.aesva.com

PLAT OF SUBDIVISION PHASE I, LOTS 12-27, AND 38-46 THE COTTAGES AT STONE HAVEN OWNER/DEVELOPER: NOL, L.L.C. BERKELEY DISTRICT JAMES CITY COUNTY VIRGINIA

Project Contacts: TCS. Project Number: 9700-02. Scale: 1"=60'. Date: 07/18/13. Sheet Number: 2 of 6