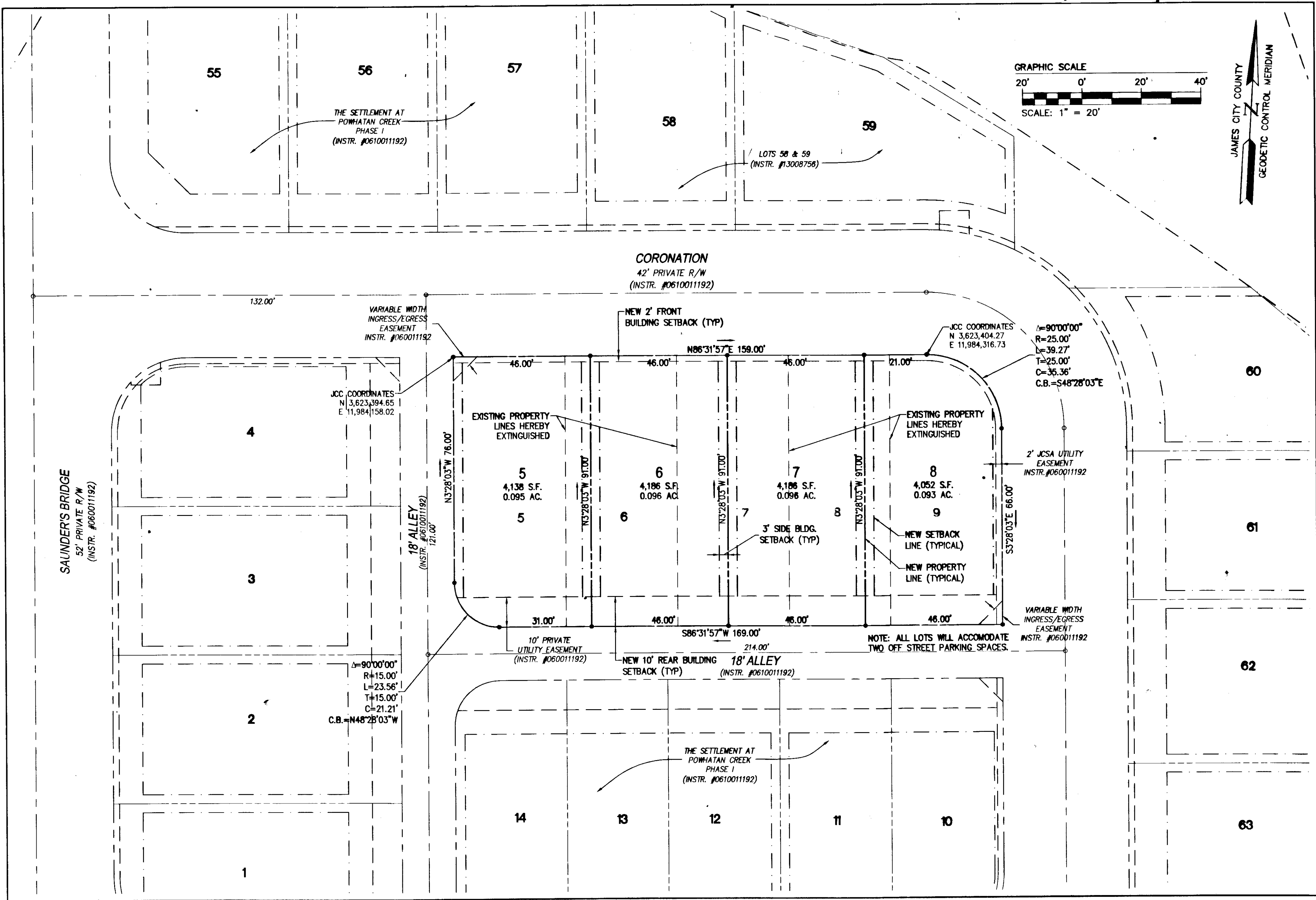
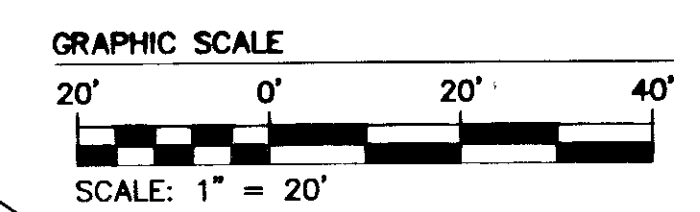
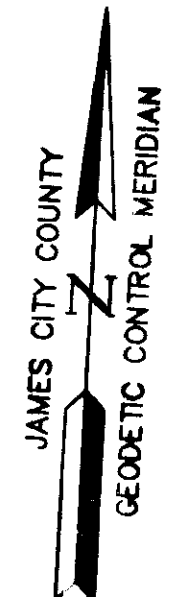
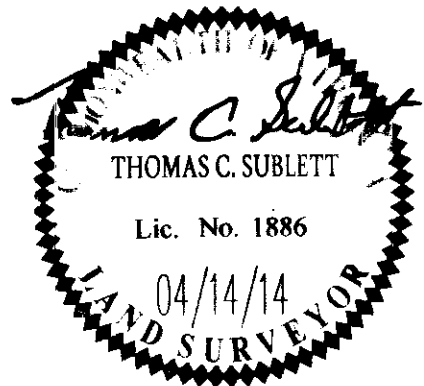


140009594



City of Williamsburg & County of James City Circuit Court: This PLAT was recorded on <b>10 June 2014</b> at <b>9:13</b> AM/PM, PB = PG = Document # <b>140009594</b> BETSY B. WOOLRIDGE, CLERK <i>Betsy Woolridge</i> , Dep. Clerk			
1	4/14/14	REVISED PER COMMENTS	TCS
Rev	Date	Description	Revised By



**2** Large ~~Small~~ Plat(s) Recorded  
herewith as # **140009594**

**AES**  
CONSULTING ENGINEERS  
Hampton Roads | Central Virginia | Middle Peninsula

5248 Old Towne Road, Suite 1  
Williamsburg, Virginia 23188  
Phone: (757) 253-0040  
Fax: (757) 220-8994  
www.aesva.com

**PLAT OF BOUNDARY LINE ADJUSTMENT  
AND LOT LINE EXTINGUISHMENT**  
**THE SETTLEMENT AT POWHATAN CREEK**  
**PHASE I**  
**LOTS 5 - 9**

BERKELEY DISTRICT    JAMES CITY COUNTY    VIRGINIA

Project Contacts:	TRS/TCS
Project Number:	9254-02
Scale:	1"=20'
Date:	03/17/14
Sheet Number	<b>2 of 2</b>