

140008446

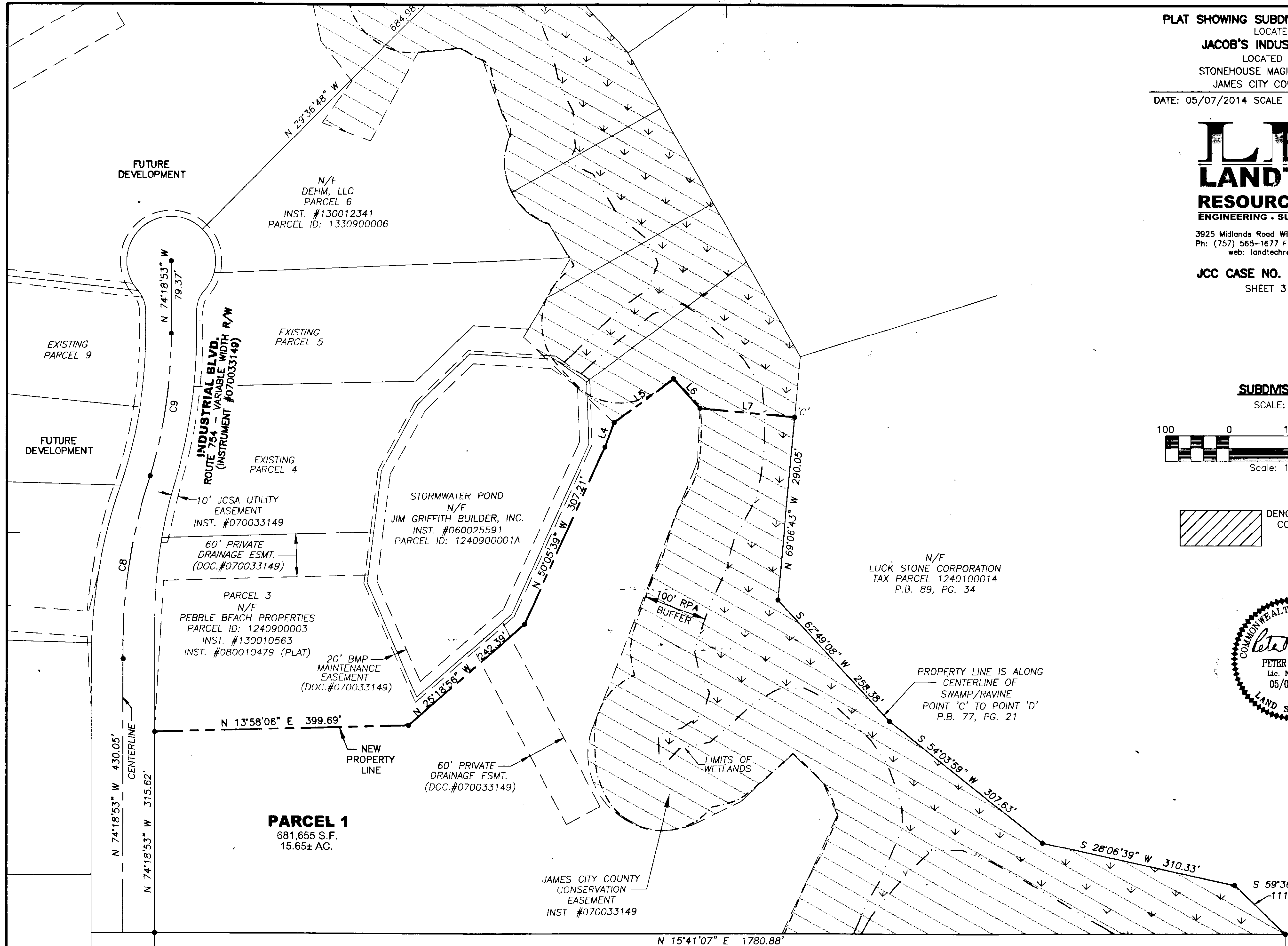
Handwritten notes

PLAT SHOWING SUBDMISION OF PARCEL 1
 LOCATED AT
JACOB'S INDUSTRIAL CENTER
 LOCATED IN THE
 STONEHOUSE MAGISTERIAL DISTRICT
 JAMES CITY COUNTY, VIRGINIA
 DATE: 05/07/2014 SCALE 1" = 100' JOB# 14-102

LRI
LANDTECH
RESOURCES, INC.
 ENGINEERING · SURVEYING · GPS

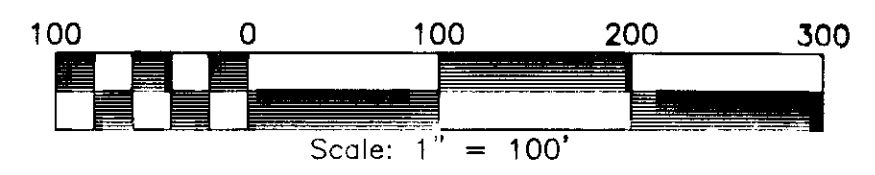
3925 Midlands Road Williamsburg, VA 23188
 Ph: (757) 565-1677 Fax: (757) 565-0782
 web: landtechresources.com

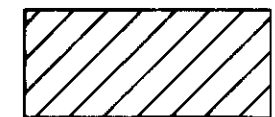
JCC CASE NO. S-0021-2014
 SHEET 3 OF 3

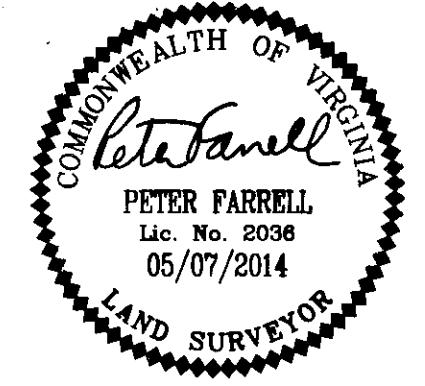


SUBMISION DETAIL

SCALE: 1"=100'



 DENOTES JAMES CITY COUNTY CONSERVATION EASEMENT DOC.#070033149 (±37.4 AC. TOTAL)



PARCEL 1
 681,655 S.F.
 15.65± AC.

City of Williamsburg & County of James City
 Circuit Court: This PLAT was recorded on
 May 22, 2014
 at 3:13 AM/PM, PG. PG.
 Document # 140008446
 BETSY B. WOOLRIDGE, CLERK
 Dep. Clerk

N/F
 OWENS-BROCKWAY GLASS CONTAINER, INC.
 D.B. 492 PG. 352
 P.B. 35 PG. 35
 PARCEL ID: 1240100015

R/W CENTERLINE CURVE TABLE				
C8	858.21'	293.47'	292.04'	N 65°55'32" W 19°35'33"
C9	790.00'	227.77'	226.98'	S 66°03'18" E 16°31'09"

PARCEL 1 LINE TABLE		
L4	N 53°54'49" W	40.52'
L5	N 20°26'20" W	116.04'
L6	N 63°50'38" E	61.48'
L7	N 21°06'54" E	150.47'

3
 140008446