

**NOTE:**

THIS PLAT WAS PRODUCED WITHOUT THE BENEFIT OF A TITLE REPORT AND REFLECTS ONLY THOSE ENCUMBRANCES, EASEMENTS AND SETBACKS AS SHOWN IN P.B. 88, PG. 11.

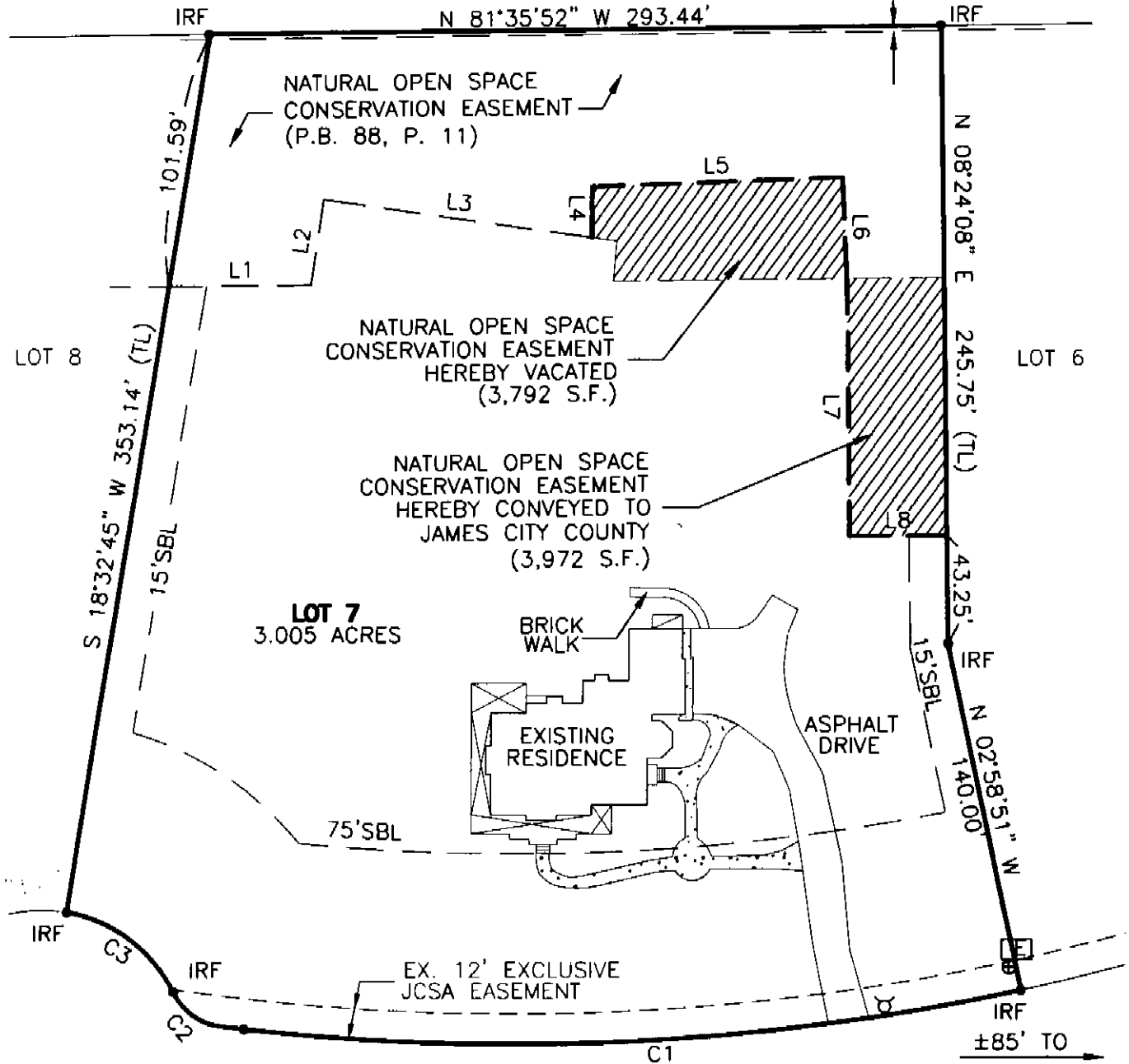
EASEMENT ADJUSTMENT LINE TABLE		
LINE	BEARING	DISTANCE
L1	N 81°26'38" W	57.50'
L2	S 17°25'13" W	34.37'
L3	N 72°59'08" W	109.07'
L4	S 09°03'15" W	20.25'

LINE	BEARING	DISTANCE
L5	N 83°02'58" W	100.34'
L6	N 06°31'44" E	40.26'
L7	N 08°24'08" E	102.50'
L8	N 81°35'52" W	38.75'

RECORD MERIDIAN  
 P.B. 88, PG. 11

**BARNES ROAD  
(STATE ROUTE 801)  
(VAR. WIDTH R/W)**

2' JCC PROHIBITIVE  
ACCESS EASEMENT  
(P.B. 88, P. 11)



**ADDRESS:**

1724 CENTENNIAL DRIVE  
JAMES CITY COUNTY, VIRGINIA

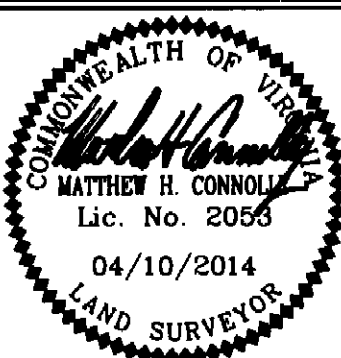
**CENTENNIAL DRIVE  
(50' R/W)**

±85' TO  
SERENITY LA.

**LEGEND**

NUMBER	DELTA	CHORD BEARING	TAN	RADIUS	ARC	CHORD
C1	18°57'38"	S 83°30'02" E	162.81	975.00	322.65	321.18
C2	56°00'53"	S 46°00'47" E	13.30	25.00	24.44	23.48
C3	53°26'44"	S 44°43'34" E	30.21	60.00	55.97	53.96

- ⊕ Cable Pedestal
- ⊕ Fire Hydrant
- ⊕ Transformer
- IRF= Iron Rod Found



REFERENCES:  
P.B. 88, PG. 11

DATE: 04/10/14  
SCALE: 1"=60'  
JOB# 14-100  
CAD File  
14-100.dwg

**NATURAL OPEN SPACE  
CONSERVATION EASEMENT  
AREA OF EXCHANGE**

JAMES CITY COUNTY

VIRGINIA

**LandTech Resources, Inc.**

Surveying • GPS • Engineering  
3925 Midlands Road, Williamsburg, Virginia 23188  
Telephone: 757-565-1677 Fax: 757-565-0782  
Web: landtechresources.com