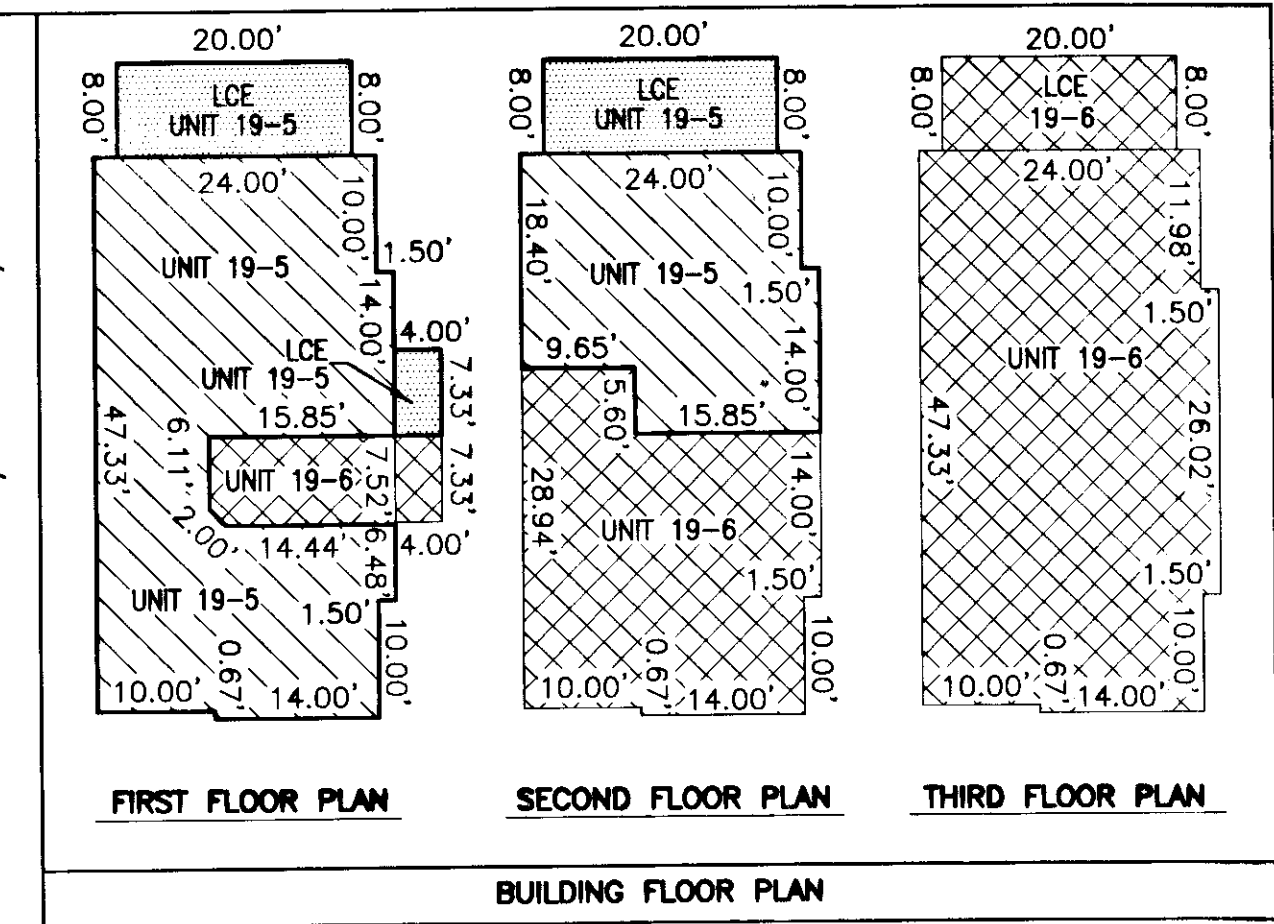


140004931



- INDICATES PREVIOUSLY SUBMITTED LAND
 - INDICATES LIMITED COMMON ELEMENT
 - INDICATES UNIT AREA
 - INDICATES COMMON ELEMENT
- *LCE=LIMITED COMMON ELEMENT

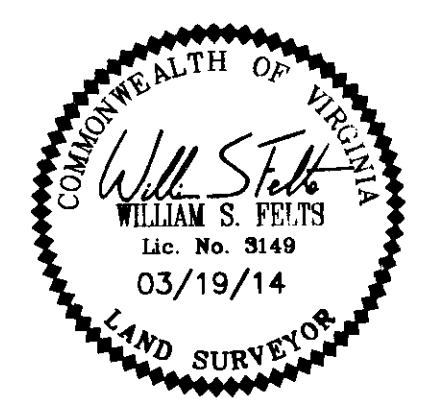
SURVEYORS CERTIFICATE

I HEREBY CERTIFY THAT THE PLAN PREVIOUSLY RECORDED FOR GOVERNOR'S GROVE AT FIVE FORKS, A CONDOMINIUM AT INSTRUMENT 090022560 ACCURATELY DEPICTS THE UNIT AND RELATED IMPROVEMENTS SHOWN AND THAT THEY COMPLY WITH THE CODE OF VIRGINIA OF 1950, AS AMENDED 55-79.58(B) AND ARE SUBSTANTIALLY COMPLETE.

I HEREBY CERTIFY THAT THIS PLAT IS ACCURATE AND COMPLIES WITH THE PROVISIONS OF SECTION 55-79.58 (A) OF THE CODE OF VIRGINIA 1950 AS AMENDED AND I FURTHER CERTIFY THAT ALL UNITS DEPICTED HEREON HAVE BEEN SUBSTANTIALLY COMPLETE.

William S. Felts
 WILLIAM S. FELTS LIC. #3149

03/19/14
 DATE



**PLAT OF
 PHASE 1F
 GOVERNOR'S GROVE AT FIVE FORKS
 A CONDOMINIUM**
 LOCATED IN THE BERKELEY DISTRICT
 JAMES CITY COUNTY, VIRGINIA

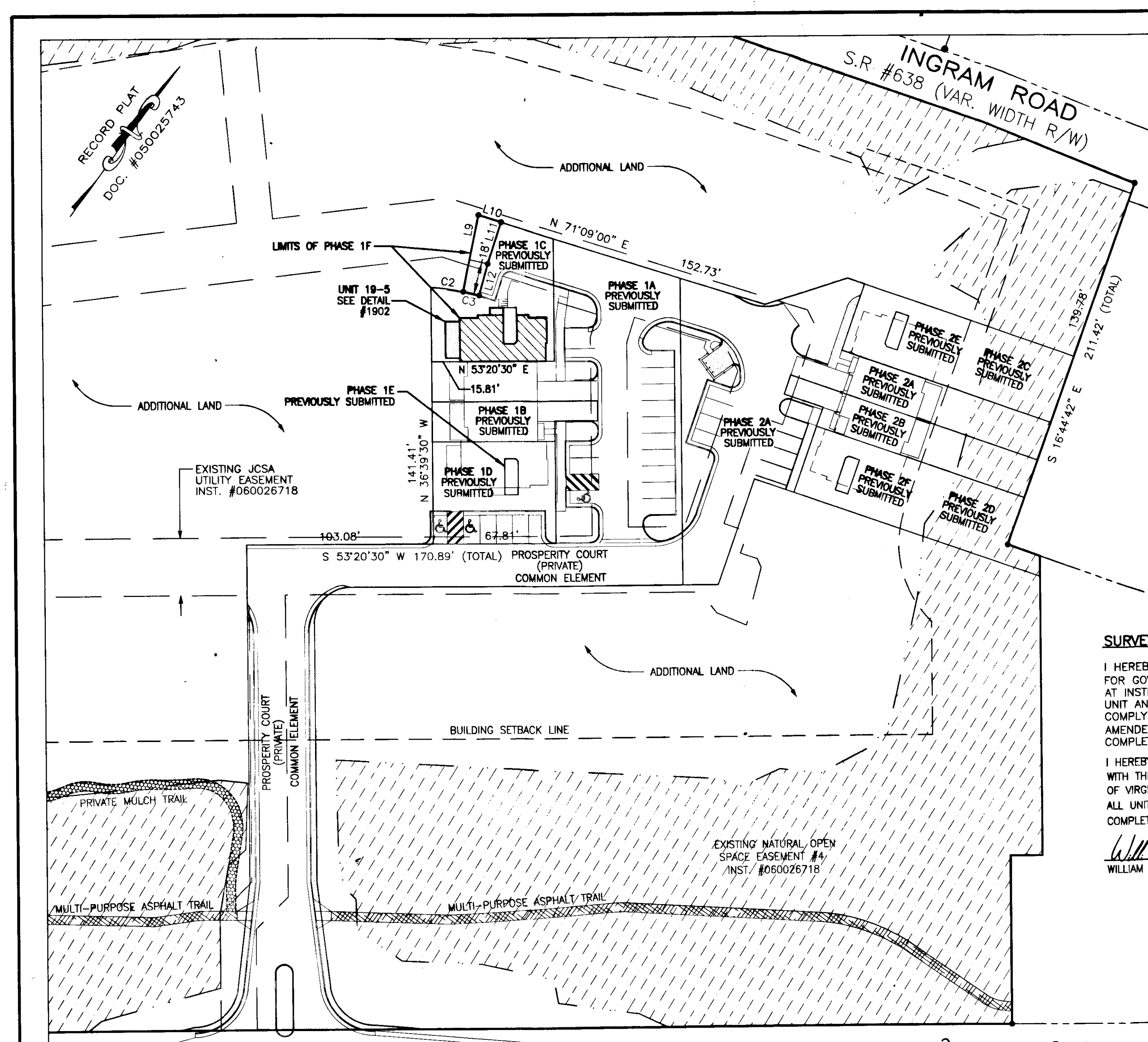
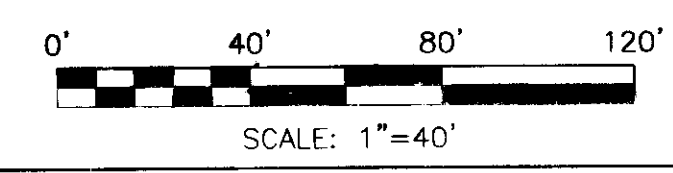
DATE: 03/19/14 SCALE: 1" = 40' JOB# 06-480
 SHEET 2 OF 2

LandTech Resources, Inc.
 Surveying • Engineering • GPS
 3925 Midlands Road, Williamsburg, VA 23188
 Phone: (757) 565-1677 Fax: (757) 565-0782
 web: landtechresources.com

City of Williamsburg & County of James City
 Circuit Court: This PLAT was recorded on
 3-25-2014
 at 3:31 AM/PM, PG. PG.
 Document # 140004931
 BETSY B. WOOLRIDGE, CLERK
Betsy Woolridge Dep. Clerk

UNIT NUMBER	UNIT TYPE	STREET ADDRESS	PARCEL ID#
19-5	C-REV	#1902 PROSPERITY CT	4622001902

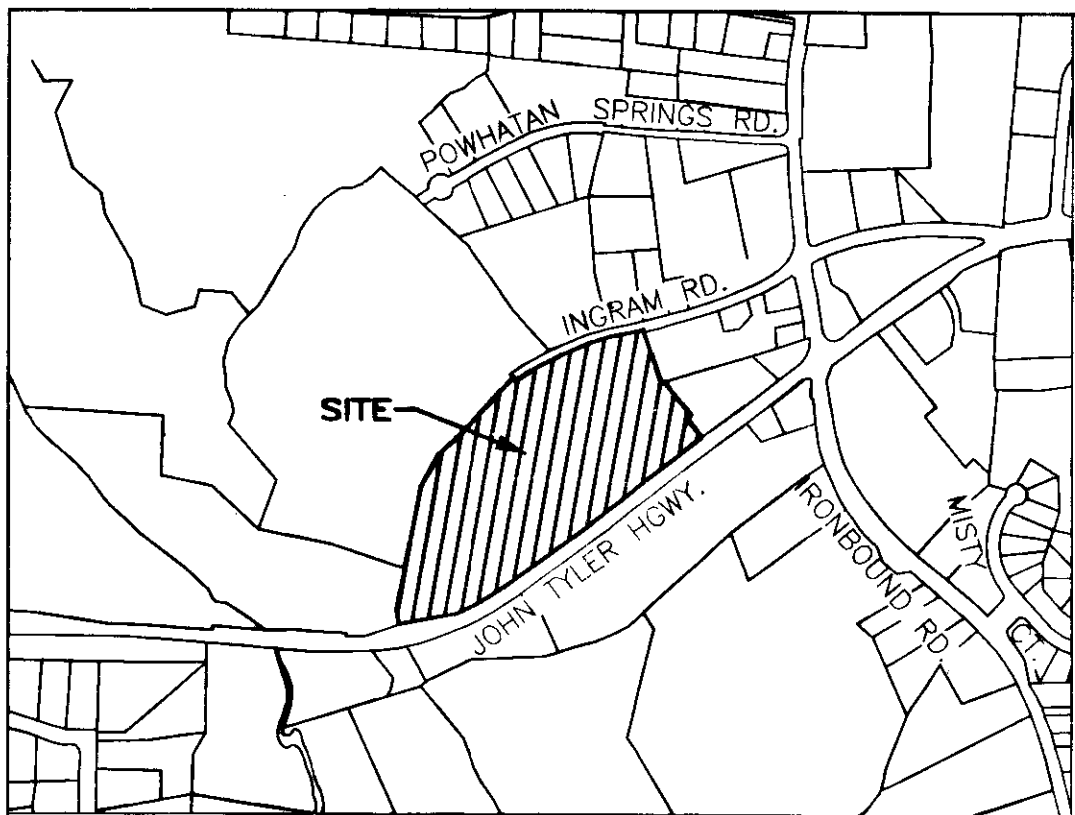
**JOHN TYLER HIGHWAY
 STATE ROUTE #5
 (VARIABLE WIDTH PUBLIC R/W)**



RECORD PLAT
 DOC. #050025743

2 Large Format Plates Required
 prepared on 140004931

140004931



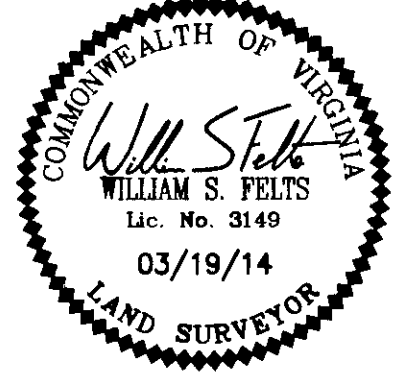
VICINITY MAP - NOT TO SCALE

SURVEYORS CERTIFICATE

I HEREBY CERTIFY THAT THIS PLAT IS ACCURATE AND COMPLIES WITH THE PROVISIONS OF SECTION 55-79.58 (A) OF THE CODE OF VIRGINIA 1950 AS AMENDED.

William S. Felts
WILLIAM S. FELTS LIC. #3149

03/19/14
DATE

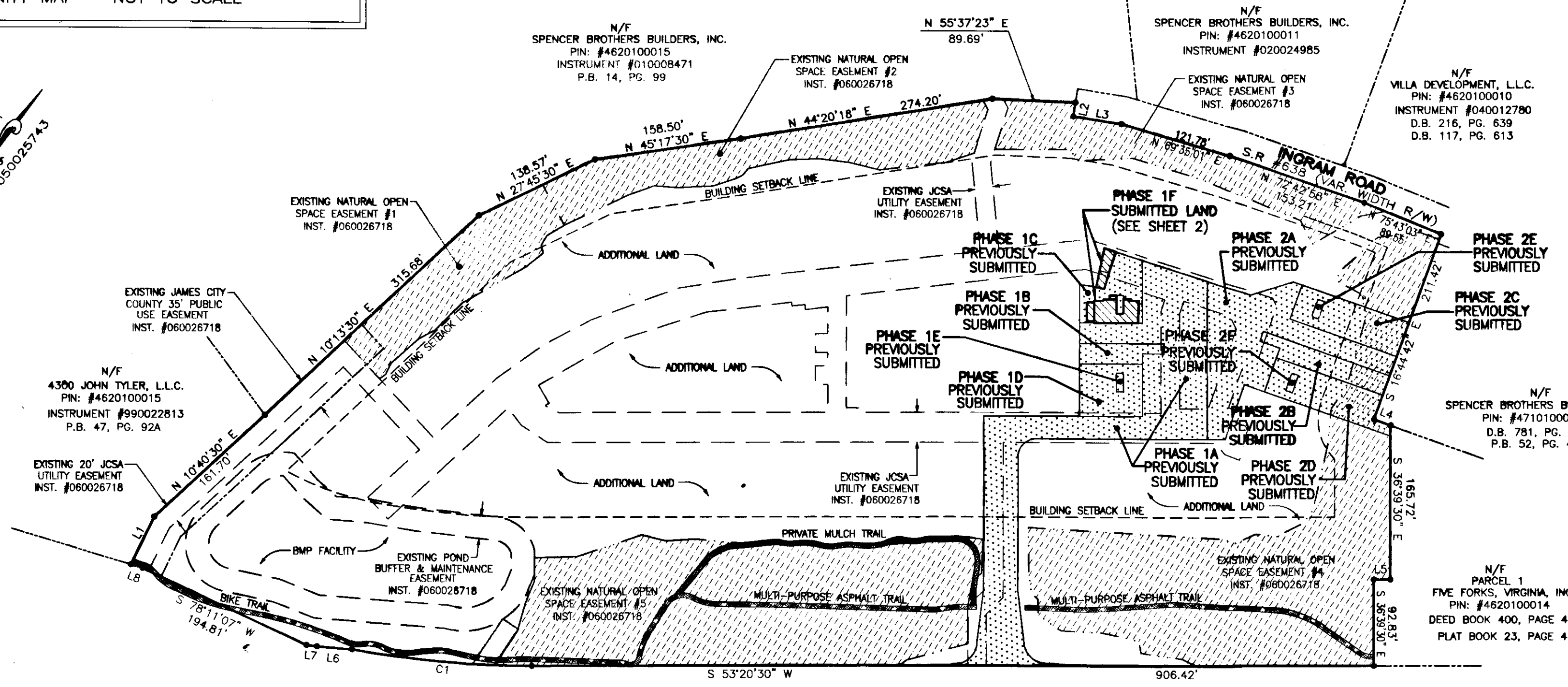
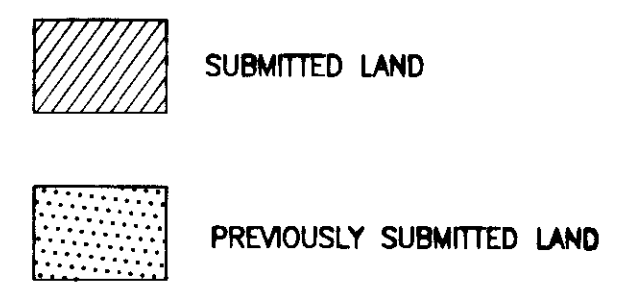


AREA TABLE

PARCEL	SQ. FT.	ACRES
PHASE 1E SUBMITTED LAND	1,716	0.039
PREVIOUSLY SUBMITTED LAND	61,684	1.416
ADDITIONAL LAND	589,836	13.541
TOTAL	653,236	14.996

PLAT OF
PHASE 1F
GOVERNOR'S GROVE AT FIVE FORKS
A CONDOMINIUM
LOCATED IN THE BERKELEY DISTRICT
JAMES CITY COUNTY, VIRGINIA
DATE: 03/19/14 SCALE: 1" = 100' JOB# 08-480
SHEET 1 OF 2

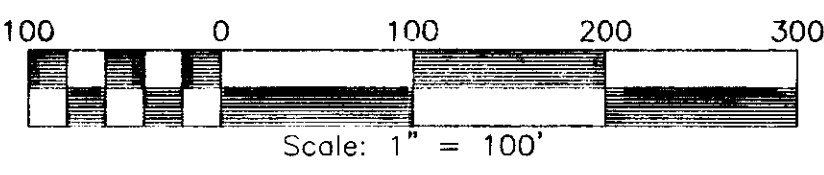
LandTech Resources, Inc.
Surveying • Engineering • GPS
3925 Midlands Road, Williamsburg, VA 23188
Phone: (757) 565-1677 Fax: (757) 565-0782
web: landtechresources.com



JOHN TYLER HIGHWAY
STATE ROUTE #5
(VARIABLE WIDTH PUBLIC R/W)

GENERAL NOTES

- THIS PLAT WAS PRODUCED WITHOUT A TITLE REPORT AND MAY NOT REFLECT ALL MATTERS AFFECTING PROPERTY.
- THIS PROPERTY APPEARS TO FALL IN ZONE "X" AS SHOWN ON COMMUNITY PANEL 51095C0205C DATED SEPTEMBER 28, 2007.
- ALL UNITS TO BE SERVED BY PUBLIC WATER AND SEWER.
- ALL LAND AND IMPROVEMENTS OUTSIDE OF BUILDINGS AND WITHIN PHASE LIMITS SHALL BE KNOWN AS COMMON ELEMENT EXCEPT FOR LIMITED COMMON ELEMENTS DESIGNATED ON PLAT AND BUILDING PLANS.
- THIS PARCEL OF LAND WAS CONVEYED TO GOVERNOR'S GROVE AT FIVE FORKS, L.L.C. BY DEED RECORDED IN INSTRUMENT #070006512.
- THE STREETS WITHIN THIS CONDOMINIUM SHALL BE KNOWN AS COMMON ELEMENT AND NOT A PUBLIC DEDICATED RIGHT-OF-WAY.
- PHASE 1F IS SUBMITTED LAND. THE REMAINING PROPERTY HAS BEEN PREVIOUSLY SUBMITTED OR ADDITIONAL LAND. ALL ADDITIONAL LAND AND ALL COMMON ELEMENTS ARE WITHDRAWABLE LAND.
- PROFFERED COVENANTS, RESTRICTIONS, AND CONDITIONS AFFECTING THIS PROPERTY HAVE BEEN RECORDED AS INST. #050019045.
- THE LOCATION OF THE PRIVATE MULCH TRAIL AND THE ASPHALT MULTI-PURPOSE TRAIL ARE APPROXIMATE ONLY AND SUBJECT TO CHANGE.



2 Large/Small Plat(s) Recorded
herewith as # 140004931

City of Williamsburg & County of James City
Circuit Court: This PLAT was recorded on
3-25-2014
at 3:21 PM, PB PG
Document # 140004931
BETSY B. WOOLRIDGE, CLERK
Amy Stew, Dep. Clerk

CURVE TABLE

NO.	DELTA	CHORD BEARING	RADIUS	ARC	CHORD
C1	10°00'21"	S 58°20'41" W	1116.00'	194.89'	194.64'
C2	7°56'00"	S 61°01'51" W	130.00'	18.00'	17.99'
C3	3°58'00"	S 66°58'51" W	130.00'	9.00'	9.00'

LINE TABLE

NO.	DIRECTION	DISTANCE
L1	N 10°44'30" W	57.40'
L2	S 27°48'08" E	15.00'
L3	N 62°11'52" E	52.25'
L4	N 73°15'18" E	18.75'
L5	S 53°20'30" W	17.63'
L6	S 58°14'37" W	37.63'
L7	S 60°24'36" W	11.43'
L8	S 70°12'23" W	12.96'
L9	N 25°00'09" W	43.00'
L10	N 71°09'00" E	13.07'
L11	S 18°25'59" E	24.11'
L12	S 21°02'09" E	18.00'