

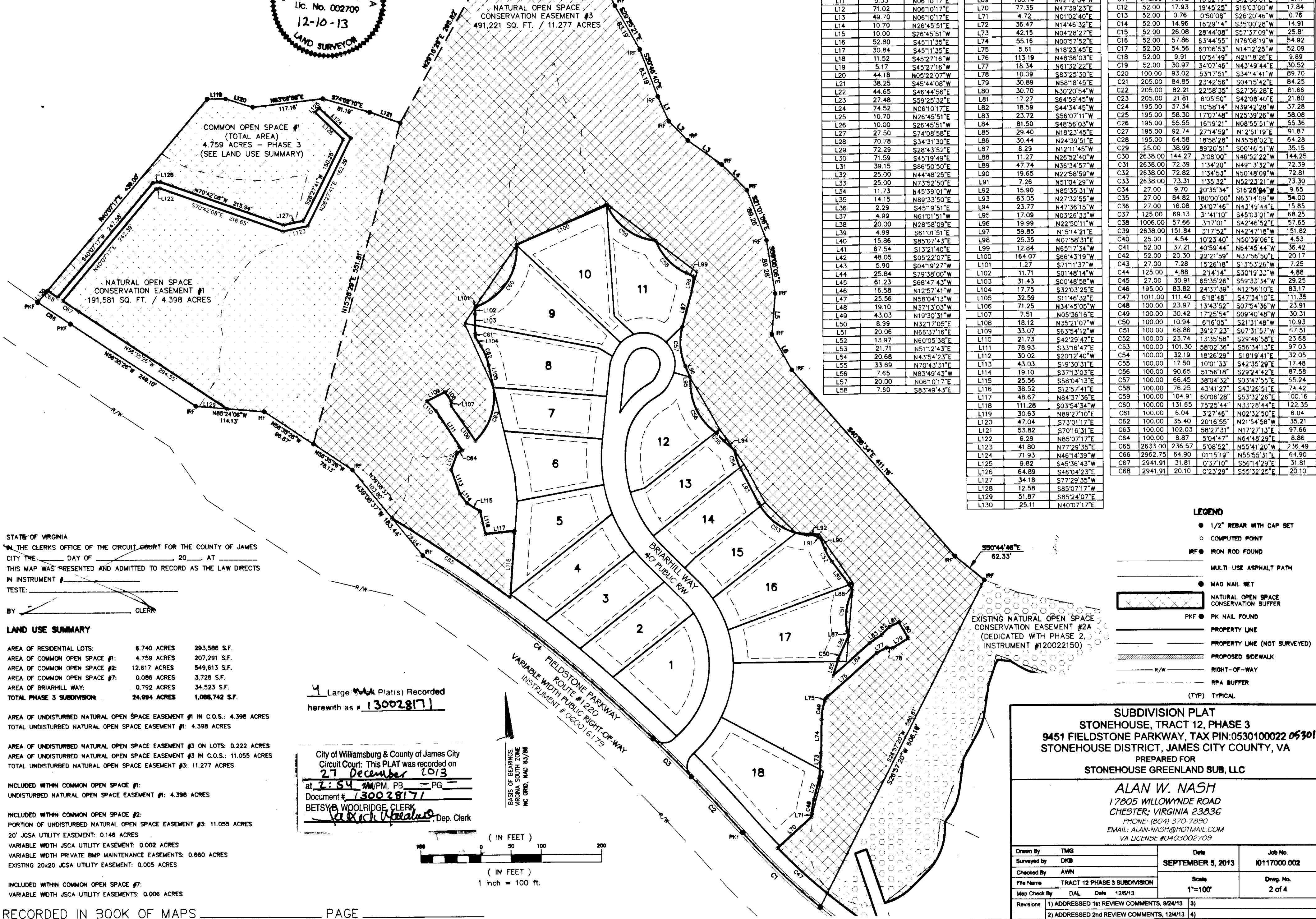
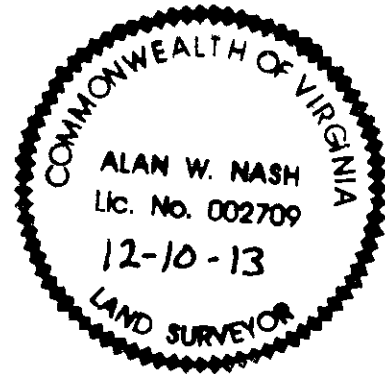
130028171

**SURVEYORS CERTIFICATE**

I HEREBY CERTIFY THAT TO THE BEST OF MY KNOWLEDGE OR BELIEF, THIS PLAT COMPLIES WITH ALL OF THE REQUIREMENTS OF THE BOARD OF SUPERVISORS AND ORDINANCES OF THE COUNTY OF JAMES CITY, VIRGINIA, REGARDING THE PLATTING OF SUBDIVISIONS WITHIN THE COUNTY.

Alan W. Nash  
ALAN W. NASH, PLS  
LICENSE NUMBER: 0403002709

12/10/13  
DATE



LINE TABLE with columns: LINE, LENGTH, BEARING. Lists lot boundaries from L1 to L58.

LINE TABLE with columns: LINE, LENGTH, BEARING. Lists lot boundaries from L59 to L130.

CURVE TABLE with columns: CURVE, RADIUS, LENGTH, DELTA, BEARING, DISTANCE. Lists curve data for C1 to C68.

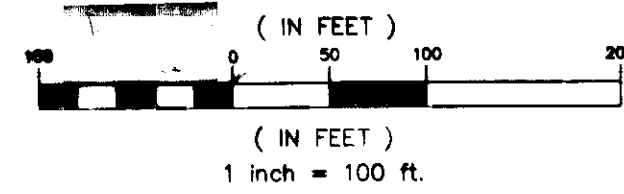
STATE OF VIRGINIA  
IN THE CLERKS OFFICE OF THE CIRCUIT COURT FOR THE COUNTY OF JAMES CITY THE DAY OF \_\_\_\_\_ 20\_\_ AT \_\_\_\_\_ THIS MAP WAS PRESENTED AND ADMITTED TO RECORD AS THE LAW DIRECTS IN INSTRUMENT # \_\_\_\_\_ TESTE: \_\_\_\_\_ BY \_\_\_\_\_ CLERK

LAND USE SUMMARY table with columns: AREA, ACRES, S.F. Rows include Residential Lots, Common Open Space #1, #2, #7, Briarhill Way, and Total Phase 3 Subdivision.

AREA OF UNDISTURBED NATURAL OPEN SPACE EASEMENT #1 IN C.O.S.: 4.398 ACRES  
TOTAL UNDISTURBED NATURAL OPEN SPACE EASEMENT #1: 4.398 ACRES  
AREA OF UNDISTURBED NATURAL OPEN SPACE EASEMENT #3 ON LOTS: 0.222 ACRES  
AREA OF UNDISTURBED NATURAL OPEN SPACE EASEMENT #3 IN C.O.S.: 11.055 ACRES  
TOTAL UNDISTURBED NATURAL OPEN SPACE EASEMENT #3: 11.277 ACRES  
INCLUDED WITHIN COMMON OPEN SPACE #1: UNDISTURBED NATURAL OPEN SPACE EASEMENT #1: 4.398 ACRES  
INCLUDED WITHIN COMMON OPEN SPACE #2: PORTION OF UNDISTURBED NATURAL OPEN SPACE EASEMENT #3: 11.055 ACRES  
20' JCSA UTILITY EASEMENT: 0.148 ACRES  
VARIABLE WIDTH JCSA UTILITY EASEMENT: 0.002 ACRES  
VARIABLE WIDTH PRIVATE BMP MAINTENANCE EASEMENTS: 0.660 ACRES  
EXISTING 20x20 JCSA UTILITY EASEMENT: 0.005 ACRES  
INCLUDED WITHIN COMMON OPEN SPACE #7: VARIABLE WIDTH JCSA UTILITY EASEMENTS: 0.006 ACRES

4 Large Area Plat(s) Recorded herewith as # 130028171

City of Williamsburg & County of James City Circuit Court. This PLAT was recorded on 27 December 2013 at 2:54 PM, PB - PG - Document # 130028171 BETSYA WOOLRIDGE, CLERK



LEGEND table with symbols and descriptions: 1/2" REBAR WITH CAP SET, COMPUTED POINT, IRON ROD FOUND, MULTI-USE ASPHALT PATH, MAG NAIL SET, NATURAL OPEN SPACE CONSERVATION BUFFER, PK NAIL FOUND, PROPERTY LINE, PROPERTY LINE (NOT SURVEYED), PROPOSED SIDEWALK, RIGHT-OF-WAY, RPA BUFFER (TYP) TYPICAL.

**SUBDIVISION PLAT**  
STONEHOUSE, TRACT 12, PHASE 3  
9451 FIELDSTONE PARKWAY, TAX PIN: 0530100022 0530100021  
STONEHOUSE DISTRICT, JAMES CITY COUNTY, VA  
PREPARED FOR  
STONEHOUSE GREENLAND SUB, LLC  
ALAN W. NASH  
17805 WILLOWYND ROAD  
CHESTER, VIRGINIA 23836  
PHONE: (804) 370-7890  
EMAIL: ALAN-NASH@HOTMAIL.COM  
VA LICENSE #0403002709

Table with columns: Drawn By, Surveyed By, Checked By, File Name, Map Check By, Revisions, Date, Scale, Job No., Dwg. No.