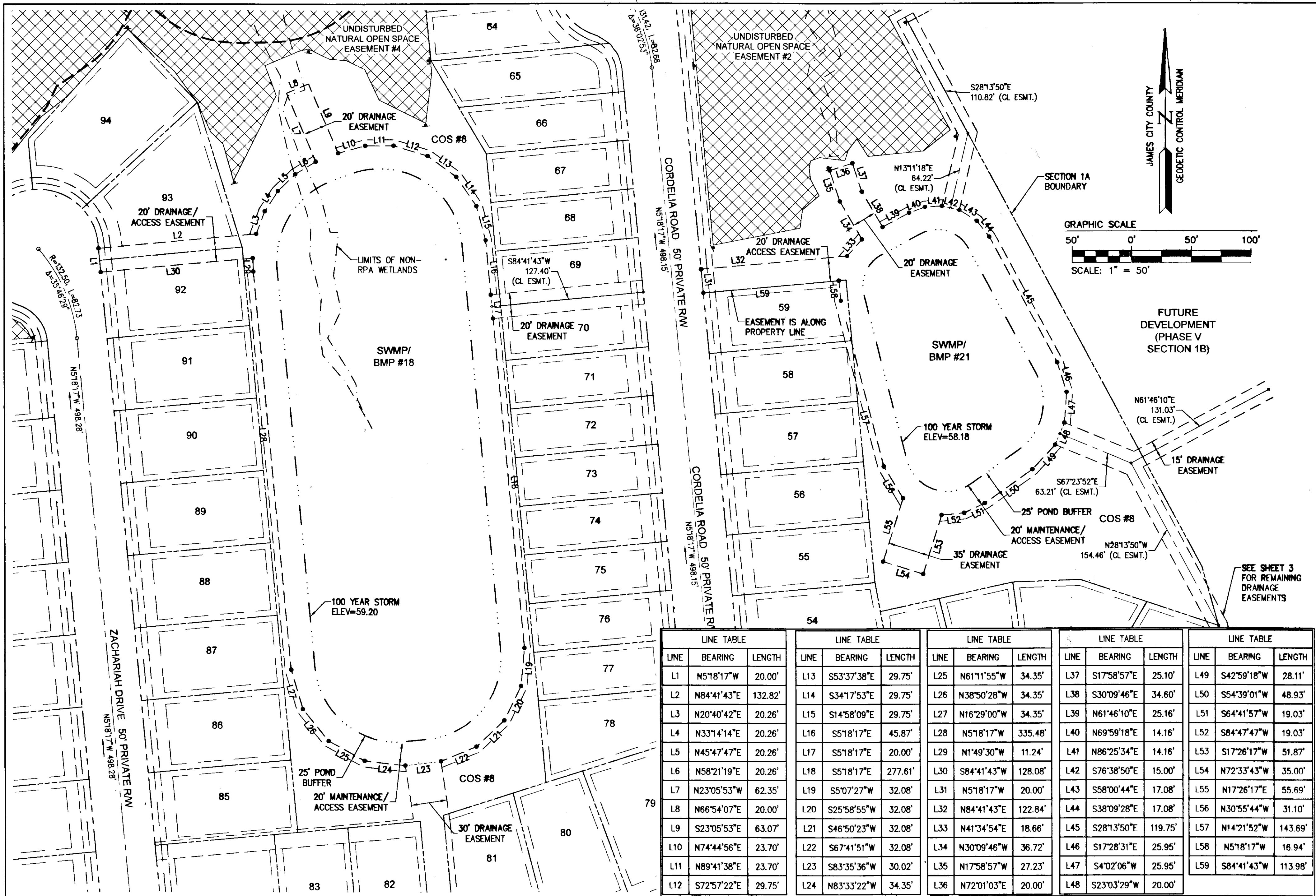


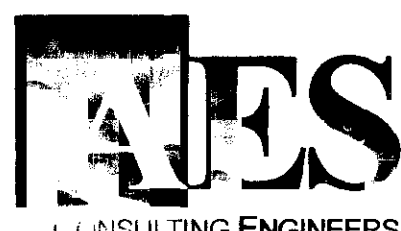
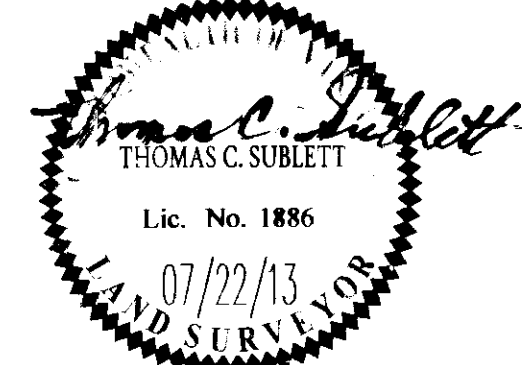
130026614



LINE	BEARING	LENGTH	LINE	BEARING	LENGTH	LINE	BEARING	LENGTH	LINE	BEARING	LENGTH	LINE	BEARING	LENGTH
L1	N5°18'17"W	20.00'	L13	S53°37'38"E	29.75'	L25	N61°11'55"W	34.35'	L37	S17°58'57"E	25.10'	L49	S42°59'18"W	28.11'
L2	N84°41'43"E	132.82'	L14	S34°17'53"E	29.75'	L26	N38°50'28"W	34.35'	L38	S30°09'46"E	34.60'	L50	S54°39'01"W	48.93'
L3	N20°40'42"E	20.26'	L15	S14°58'09"E	29.75'	L27	N16°29'00"W	34.35'	L39	N61°46'10"E	25.16'	L51	S64°41'57"W	19.03'
L4	N33°14'14"E	20.26'	L16	S5°18'17"E	45.87'	L28	N5°18'17"W	335.48'	L40	N69°59'18"E	14.16'	L52	S84°47'47"W	19.03'
L5	N45°47'47"E	20.26'	L17	S5°18'17"E	20.00'	L29	N1°49'30"W	11.24'	L41	N86°25'34"E	14.16'	L53	S17°26'17"W	51.87'
L6	N58°21'19"E	20.26'	L18	S5°18'17"E	277.61'	L30	S84°41'43"W	128.08'	L42	S76°38'50"E	15.00'	L54	N72°33'43"W	35.00'
L7	N23°05'53"W	62.35'	L19	S5°07'27"W	32.08'	L31	N5°18'17"W	20.00'	L43	S58°00'44"E	17.08'	L55	N17°26'17"E	55.69'
L8	N66°54'07"E	20.00'	L20	S25°58'55"W	32.08'	L32	N84°41'43"E	122.84'	L44	S38°09'28"E	17.08'	L56	N30°55'44"W	31.10'
L9	S23°05'53"E	63.07'	L21	S46°50'23"W	32.08'	L33	N41°34'54"E	18.66'	L45	S28°13'50"E	119.75'	L57	N14°21'52"W	143.69'
L10	N74°44'56"E	23.70'	L22	S67°41'51"W	32.08'	L34	N30°09'46"W	36.72'	L46	S17°28'31"E	25.95'	L58	N5°18'17"W	16.94'
L11	N89°41'38"E	23.70'	L23	S83°35'36"W	30.02'	L35	N17°58'57"W	27.23'	L47	S4°02'06"W	25.95'	L59	S84°41'43"W	113.98'
L12	S72°57'22"E	29.75'	L24	N83°33'22"W	34.35'	L36	N72°01'03"E	20.00'	L48	S23°03'29"W	20.00'			

Rev	Date	Description	Revised By

City of Williamsburg & County of James City
 Circuit Court: This PLAT was recorded on
3 December 2013
 at 9:42 AM/PM, PG --
 Document # **130026614**
 BETSY B. WOOLRIDGE, CLERK
[Signature] Dep. Clerk



614 Moorefield Park Drive
 Richmond, Virginia 23236-3655
 Phone: (804) 330-8040
 Fax: (804) 330-9840
 www.aesva.com

Hampton Roads | Central Virginia | Middle Peninsula

PLAT OF SUBDIVISION
 SWMP/BMP DRAINAGE EASEMENT
**COLONIAL HERITAGE
 PHASE V - SECTION 1A**
 OWNER / DEVELOPER: COLONIAL HERITAGE, L.L.C.
 STONEHOUSE DISTRICT | JAMES CITY COUNTY | VIRGINIA

Project Contacts: TRS/TCS
 Project Number: 8861-51
 Scale: 1"=50'
 Date: 07/22/13
 Sheet Number

6 OF 8