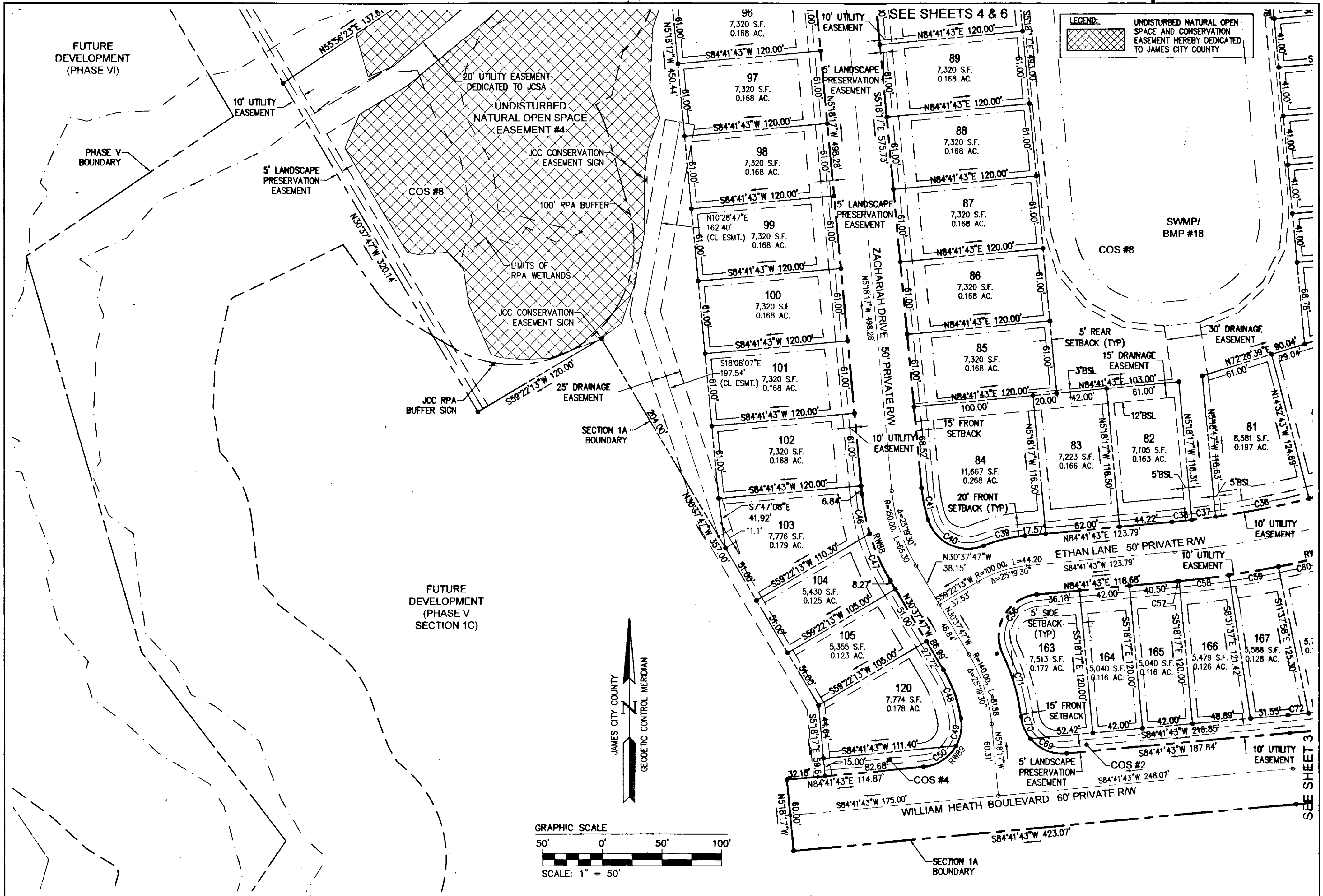
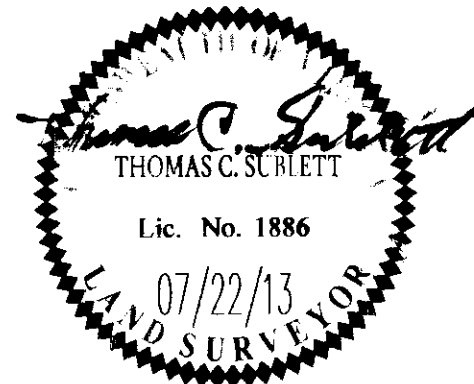


130026614



City of Williamsburg & County of James City Circuit Court: This PLAT was recorded on 3 December 2013 at 9:42 AM/PM PB PG Document # 130026614 BETSY B. WOOLRIDGE, CLERK <i>Buck Wolridge</i> Dep. Clerk			
Rev.	Date	Description	Revised By



NES
CONSULTING ENGINEERS
Hampton Roads | Central Virginia | Middle Peninsula

614 Moorefield Park Drive
Richmond, Virginia 23236-3655
Phone: (804) 330-8040
Fax: (804) 330-9840
www.aesva.com

Large/Small Plat(s) Recorded
herewith as # **130026614**

**PLAT OF SUBDIVISION
LOTS 43-106 AND 163 TO 172
COLONIAL HERITAGE
PHASE V - SECTION 1A**

OWNER / DEVELOPER: COLONIAL HERITAGE, L.L.C.

STONEHOUSE DISTRICT JAMES CITY COUNTY VIRGINIA

Project Contacts:	TRS/TCS
Project Number:	8881-51
Scale:	1"=50'
Date:	07/22/13
Sheet Number	5 OF 8