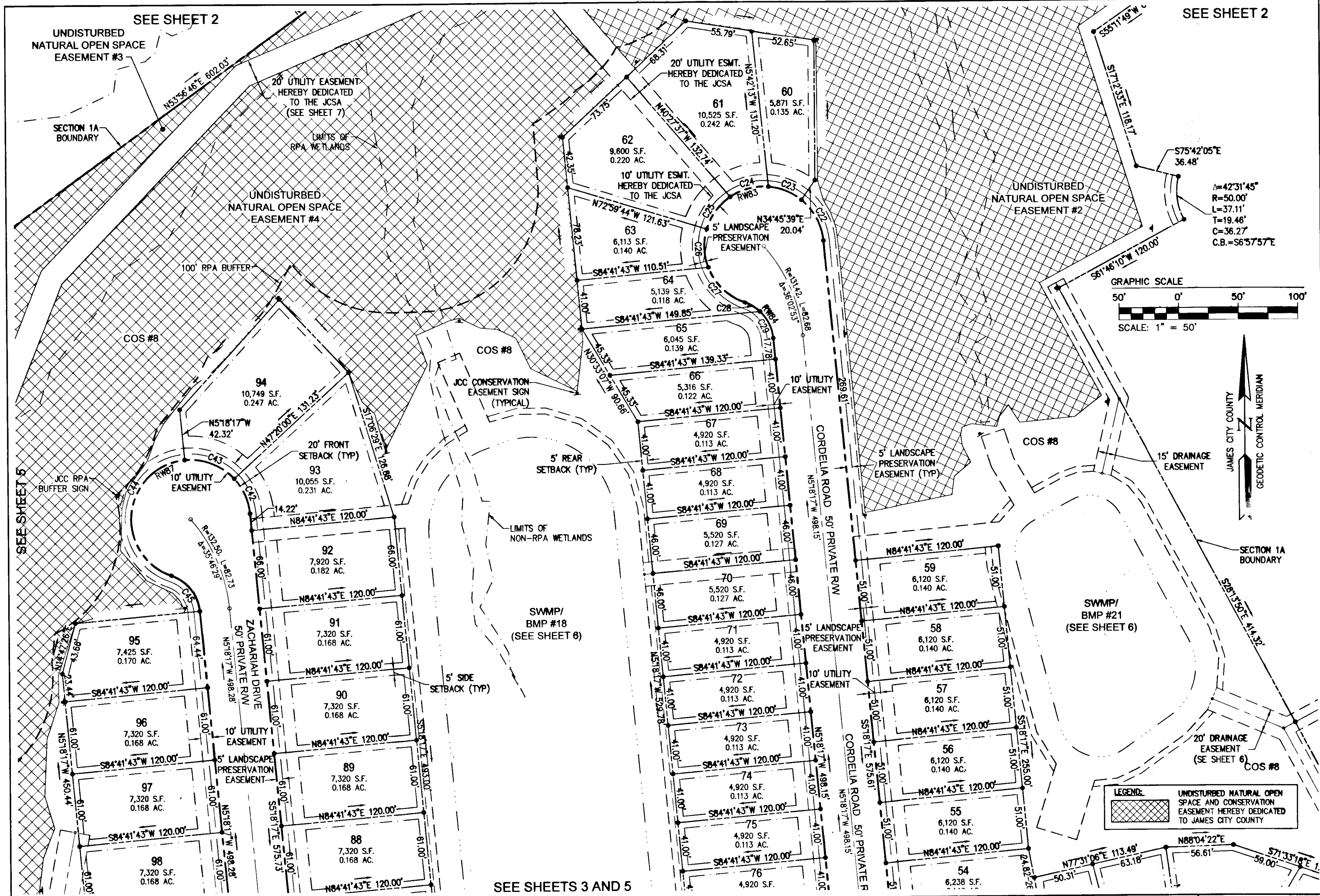
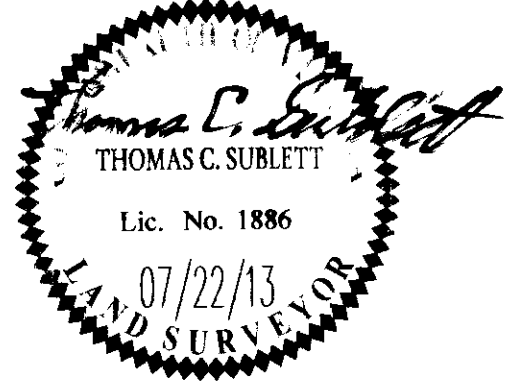


130026614



Rev.	Date	Description	Revised By

City of Williamsburg & County of James City
Circuit Court: This PLAT was recorded on
3 December 2013
at **9:42** AM, PM, PB, PG
Document # **130026614**
BETSY B. WOOLRIDGE, CLERK
Betsy Woolridge Dep. Clerk



AES
CONSULTING ENGINEERS
Hampton Roads | Central Virginia | Middle Peninsula

614 Moorefield Park Drive
Richmond, Virginia 23236-3655
Phone: (804) 330-8040
Fax: (804) 330-9840
www.aesva.com

Large/Small Plat(s) Recorded
herewith as # **130026614**

PLAT OF SUBDIVISION
LOTS 43-106 AND 163 TO 172
**COLONIAL HERITAGE
PHASE V - SECTION 1A**
OWNER / DEVELOPER: COLONIAL HERITAGE, L.L.C.

STONEHOUSE DISTRICT JAMES CITY COUNTY VIRGINIA

Project Contacts: TRS/TCS
Project Number: 8881-51
Scale: 1"=50' Date: 07/22/13
Sheet Number
4 OF 8