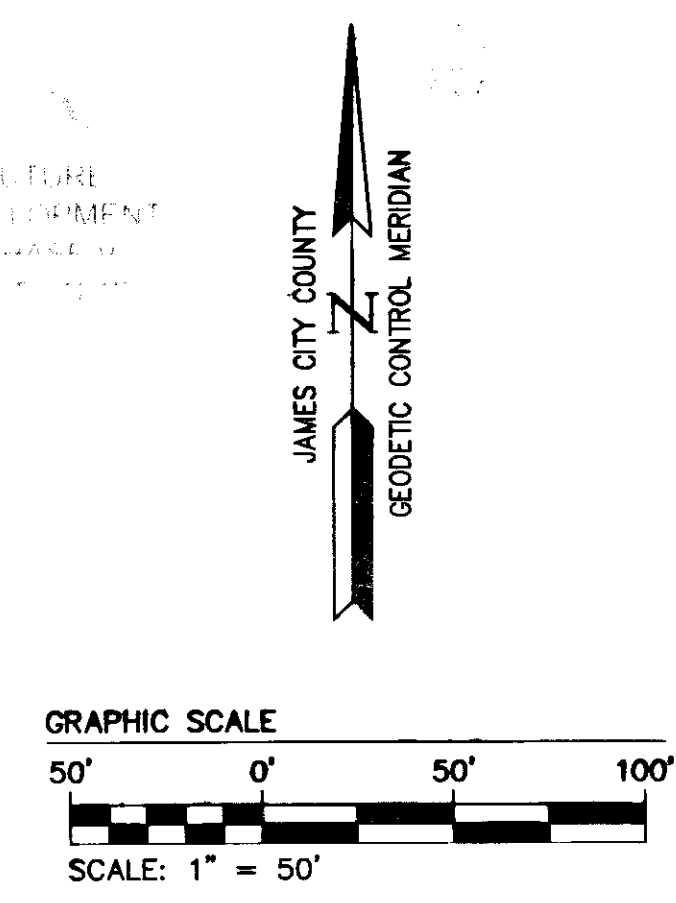
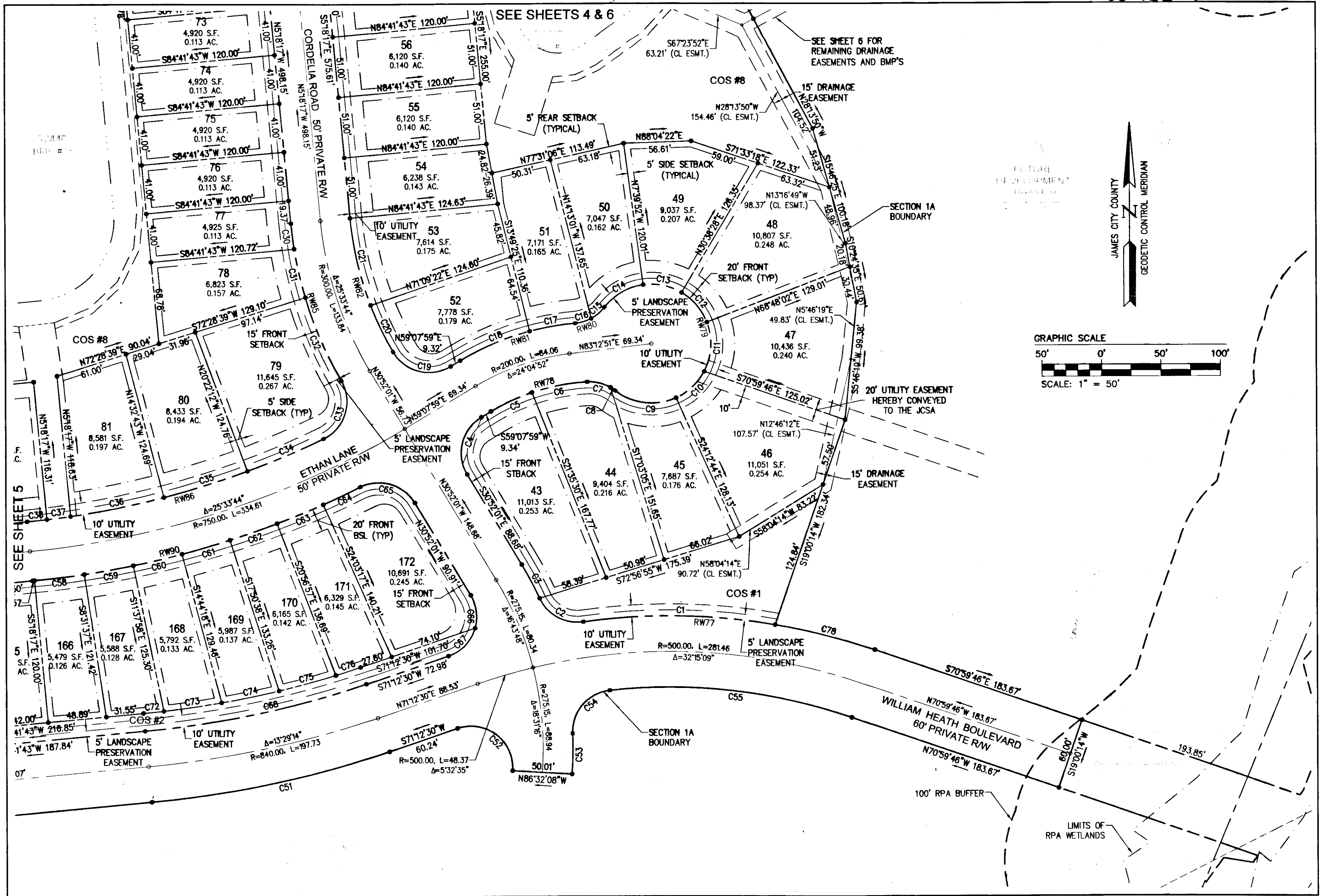
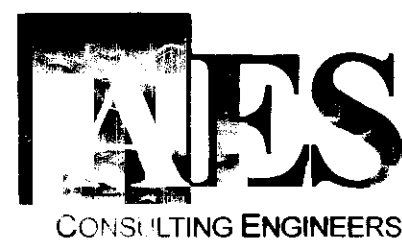
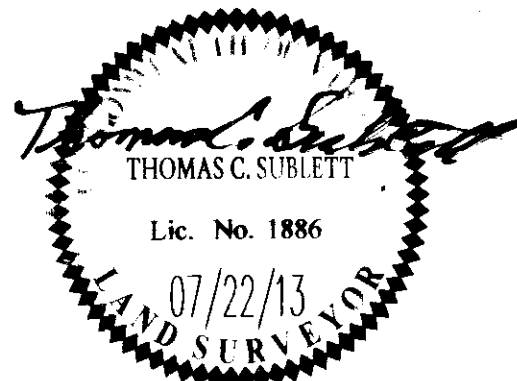


130026614



Rev	Date	Description	Revised By

City of Williamsburg & County of James City
 Circuit Court: This PLAT was recorded on
3 December 2013
 at **9:42** AM/PM, PG
 Document # **130026614**
 BETSY B. WOOLRIDGE, CLERK
[Signature], Dep. Clerk



Large/Small Plats Recorded
 herewith as # **130026614**
 614 Moonfield Park Drive
 Richmond, Virginia 23236-3656
 Phone: (804) 330-8040
 Fax: (804) 330-9840
 www.aesva.com

Hampton Roads | Central Virginia | Middle Peninsula

PLAT OF SUBDIVISION
 LOTS 43-106 AND 163 TO 172
**COLONIAL HERITAGE
 PHASE V - SECTION 1A**
 OWNER / DEVELOPER: COLONIAL HERITAGE, L.L.C.
 STONEHOUSE DISTRICT JAMES CITY COUNTY VIRGINIA

Project Contacts:	TRS/TCS
Project Number:	8861-51
Scale:	1"=50'
Date:	07/22/13
Sheet Number	3 OF 8