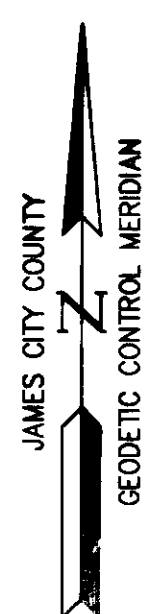


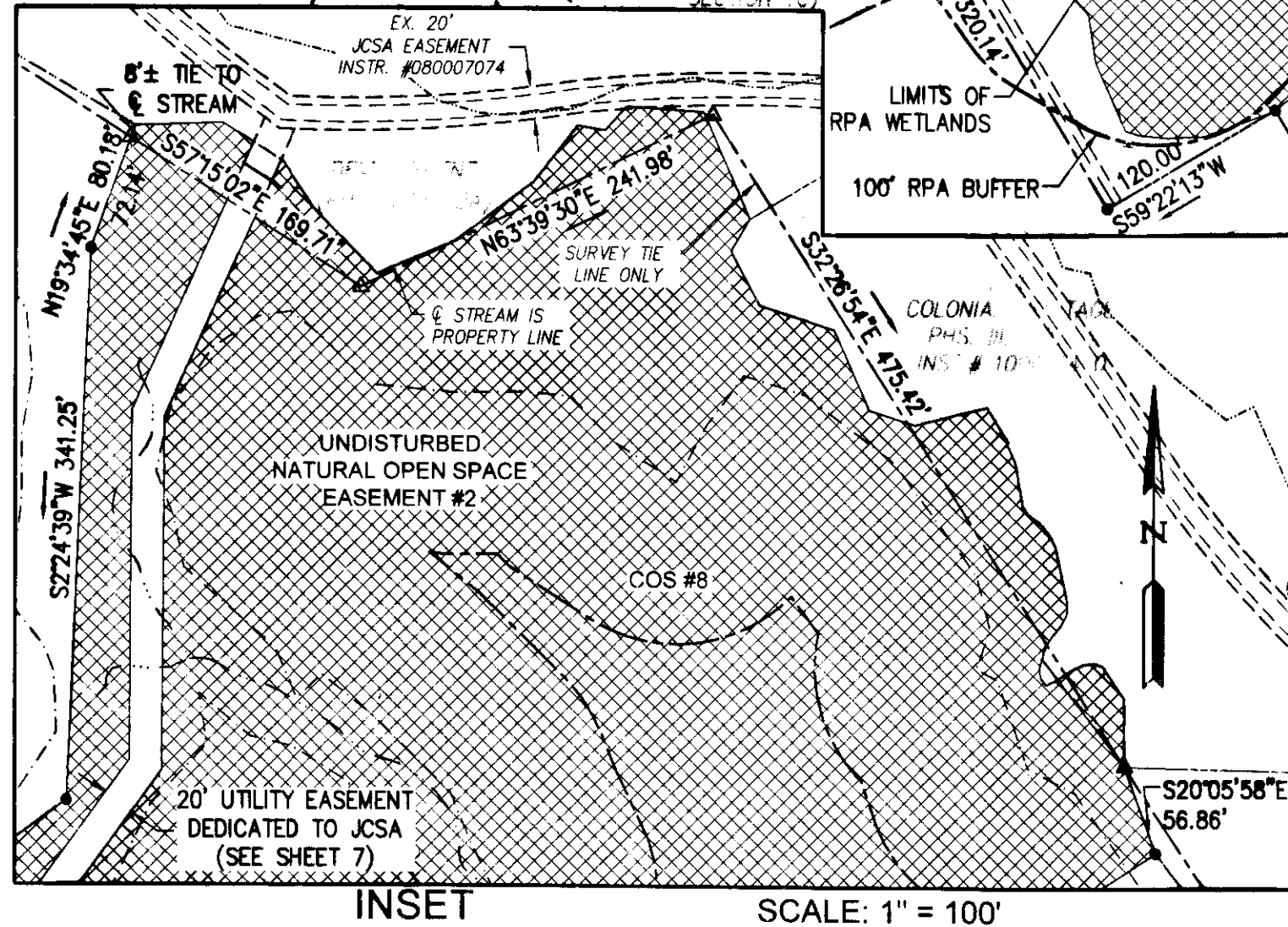
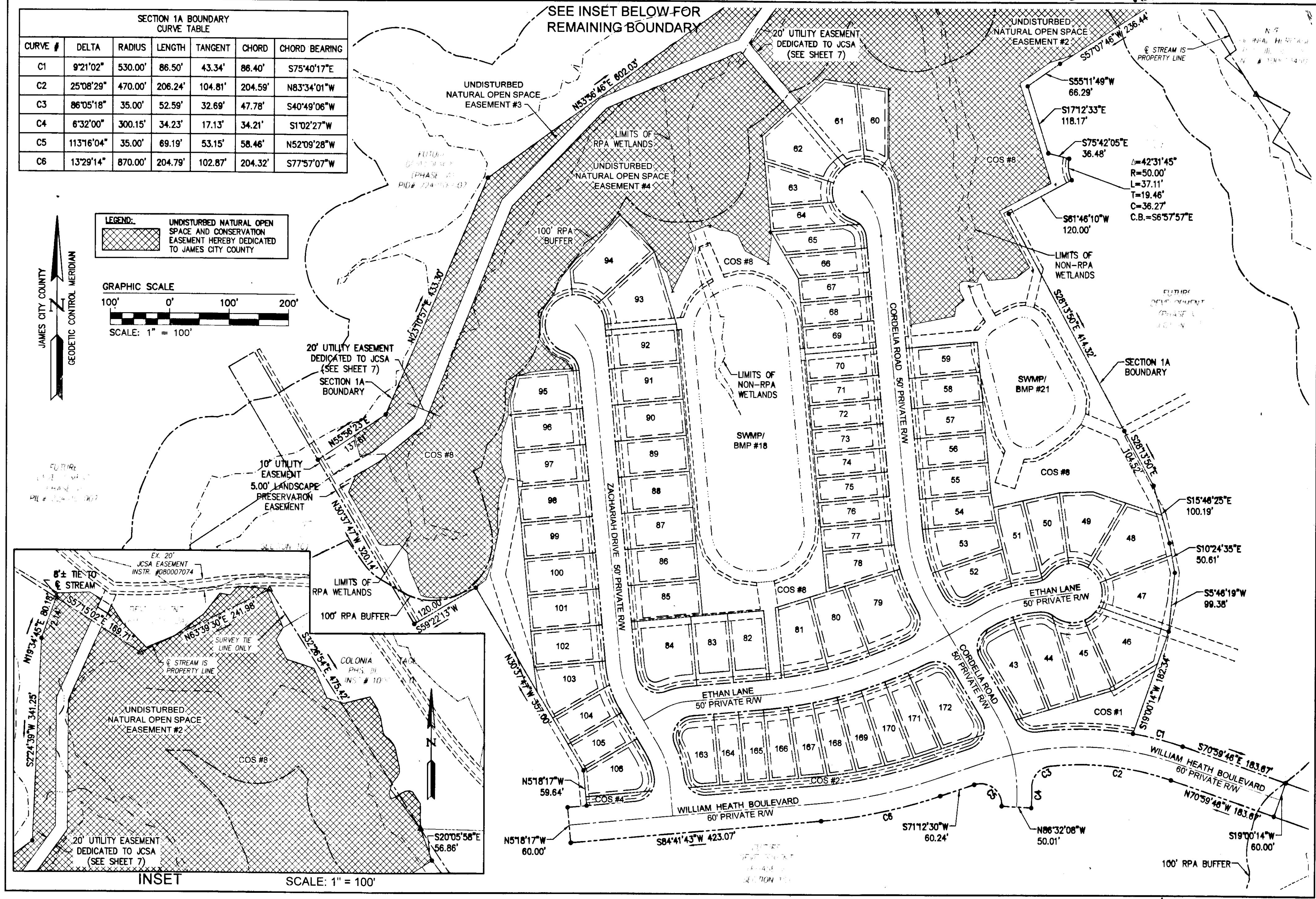
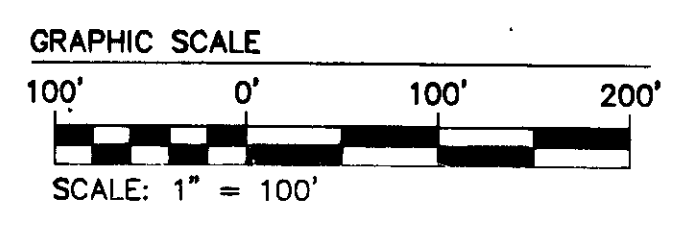
130026614

SECTION 1A BOUNDARY CURVE TABLE

CURVE #	DELTA	RADIUS	LENGTH	TANGENT	CHORD	CHORD BEARING
C1	9°21'02"	530.00'	86.50'	43.34'	86.40'	S75°40'17"E
C2	25°08'29"	470.00'	206.24'	104.81'	204.59'	N83°34'01"W
C3	86°05'18"	35.00'	52.59'	32.69'	47.78'	S40°49'06"W
C4	6°32'00"	300.15'	34.23'	17.13'	34.21'	S1°02'27"W
C5	113°16'04"	35.00'	69.19'	53.15'	58.46'	N52°09'28"W
C6	13°29'14"	870.00'	204.79'	102.87'	204.32'	S77°57'07"W

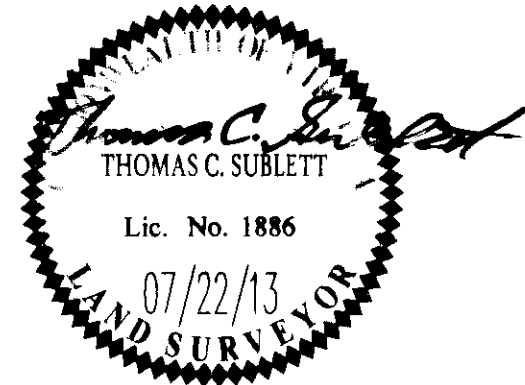


LEGEND: UNDISTURBED NATURAL OPEN SPACE AND CONSERVATION EASEMENT HEREBY DEDICATED TO JAMES CITY COUNTY



Rev.	Date	Description	Revised By

City of Williamsburg & County of James City
Circuit Court: This PLAT was recorded on
3 December 2013
at **9:42** AM/PM, PB PG
Document # **130026614**
BETSY B. WOOLRIDGE, CLERK
[Signature] Dep. Clerk



NES
CONSULTING ENGINEERS
Hampton Roads | Central Virginia | Middle Peninsula

Large/Small Plat(s) Recorded herewith as # **130026614**

614 Moorefield Park Drive
Richmond, Virginia 23236-3655
Phone: (804) 330-8040
Fax: (804) 330-9840
www.nesva.com

PLAT OF SUBDIVISION
LOTS 43-106 AND 163 TO 172
**COLONIAL HERITAGE
PHASE V - SECTION 1A**
OWNER / DEVELOPER: COLONIAL HERITAGE, L.L.C.
STONEHOUSE DISTRICT JAMES CITY COUNTY VIRGINIA

Project Contacts:	TRS/TCS
Project Number:	8881-51A
Scale:	1"=100'
Date:	07/22/13
Sheet Number:	2 OF 8