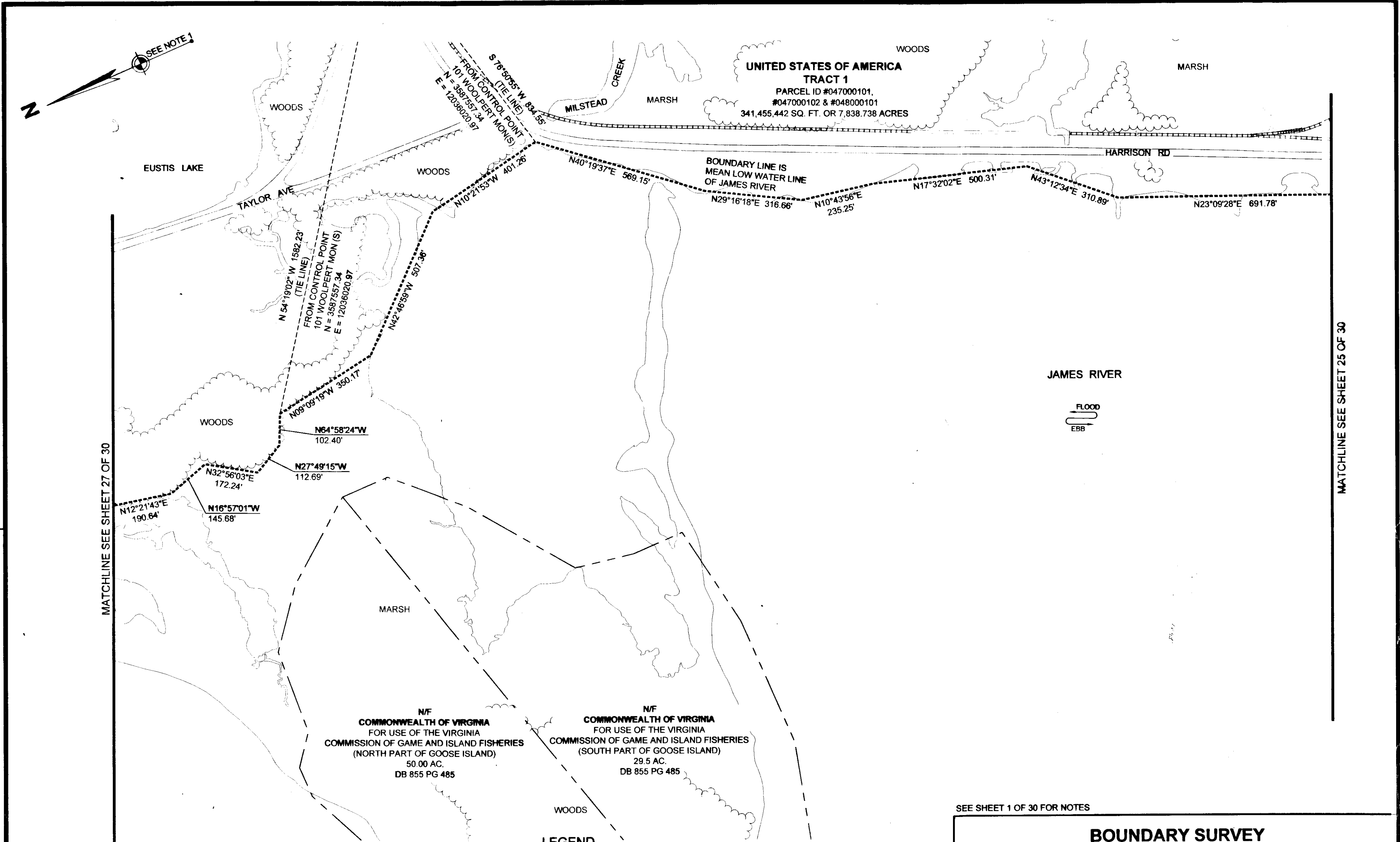
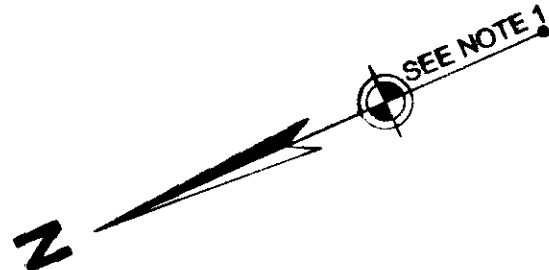


130026366



MATCHLINE SEE SHEET 27 OF 30

MATCHLINE SEE SHEET 25 OF 30



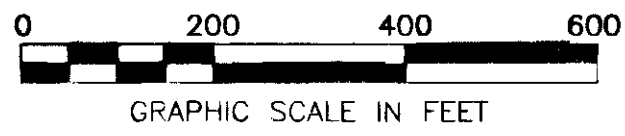
UNITED STATES OF AMERICA TRACT 1
 PARCEL ID #047000101, #047000102 & #048000101
 341,455.442 SQ. FT. OR 7,838.738 ACRES

BOUNDARY LINE IS MEAN LOW WATER LINE OF JAMES RIVER

N/F COMMONWEALTH OF VIRGINIA FOR USE OF THE VIRGINIA COMMISSION OF GAME AND ISLAND FISHERIES (NORTH PART OF GOOSE ISLAND) 50.00 AC. DB 855 PG 485

N/F COMMONWEALTH OF VIRGINIA FOR USE OF THE VIRGINIA COMMISSION OF GAME AND ISLAND FISHERIES (SOUTH PART OF GOOSE ISLAND) 29.5 AC. DB 855 PG 485

- LEGEND**
- IRON PIN FOUND
 - IRON PIPE FOUND
 - T-BAR FOUND
 - NAIL FOUND
 - CONCRETE MONUMENT FOUND
 - MONUMENT SET
 - IRON PIN SET
 - BOUNDARY LINE
 - - - TIE LINE
 - · - · - CITY/COUNTY LINE
 - · - · - RIGHT OF WAY LINE
 - · - · - EASEMENT LINE
 - · - · - ADJOINER LINE
 - · - · - EXIST. RAILROAD TRACKS
 - ~~~~~ EDGE OF WOODS



SEE SHEET 1 OF 30 FOR NOTES

BOUNDARY SURVEY
 OF PROPERTY OF
UNITED STATES OF AMERICA
JOINT BASE LANGLEY-EUSTIS (JBLE)
 NEWPORT NEWS TAX PARCELS 047000100, 047000102 & 048000101
 AND
 JAMES CITY COUNTY TAX PARCEL 0622010001
NEWPORT NEWS AND JAMES CITY COUNTY, VIRGINIA

DES. N/A JOB NO. 71874
 DRN. PP SCALE 1" = 200'
 CKD. JGB DATE 4/29/2013

WOOLPERT
 DESIGN | GEOSPATIAL | INFRASTRUCTURE
 676 INDEPENDENCE PARKWAY
 SUITE 100
 CHESAPEAKE, VA 23320-5218
 TEL: 757.549.3549
 FAX: 757.549.3540

SHEET NO. 26 OF 30
 FILE NO. 71874_plat.dwg

VIRGINIA:
 IN THE CLERK'S OFFICE OF THE CIRCUIT COURT OF THE CITY/COUNTY OF **WILLIAMSBURG/JAMES CITY COUNTY**
 VIRGINIA ON THIS 29th DAY OF November, 2013, THIS PLAT WAS RECEIVED AND ADMITTED TO
 RECORD IN MAP BOOK _____ AT PAGE _____ AT 10:08 AM as Inst 130026366
 TESTE: SETH W. WOOLPERT, CLERK by: Patrick Wardlaw, Deputy Clerk
 CLERK

30 Large Sheet Plat(s) Recorded
 hereunder as 130026366