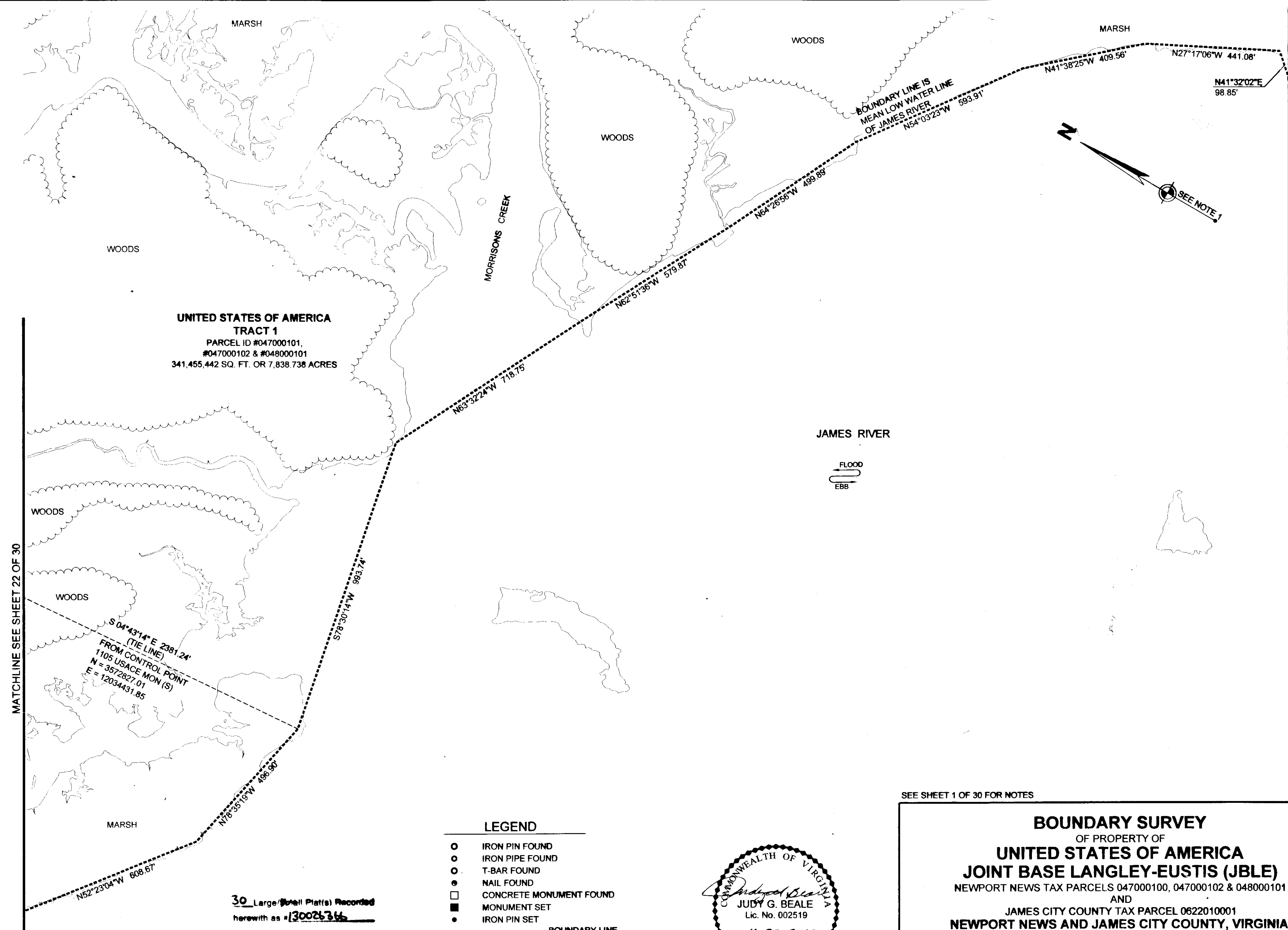


130026366

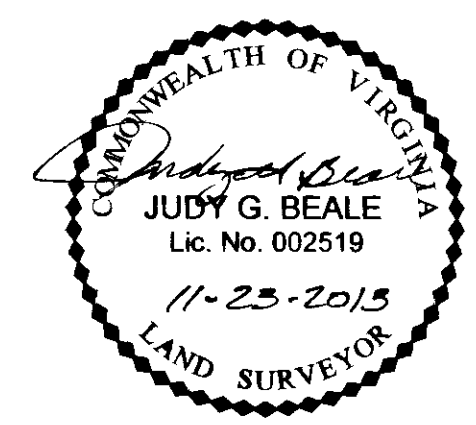


**UNITED STATES OF AMERICA  
TRACT 1**  
 PARCEL ID #047000101,  
 #047000102 & #048000101  
 341,455,442 SQ. FT. OR 7,838.738 ACRES

MATCHLINE SEE SHEET 22 OF 30

MATCHLINE SEE SHEET 20 OF 30

- LEGEND**
- IRON PIN FOUND
  - IRON PIPE FOUND
  - T-BAR FOUND
  - NAIL FOUND
  - CONCRETE MONUMENT FOUND
  - MONUMENT SET
  - IRON PIN SET
  - BOUNDARY LINE
  - - - TIE LINE
  - CITY/COUNTY LINE
  - RIGHT OF WAY LINE
  - - - EASEMENT LINE
  - - - ADJOINER LINE
  - ==== EXIST. RAILROAD TRACKS
  - ~~~~~ EDGE OF WOODS



30 Large (Small) Plat(s) Recorded  
 herewith as #130026366

SEE SHEET 1 OF 30 FOR NOTES

**BOUNDARY SURVEY**  
 OF PROPERTY OF  
**UNITED STATES OF AMERICA**  
**JOINT BASE LANGLEY-EUSTIS (JBLE)**  
 NEWPORT NEWS TAX PARCELS 047000100, 047000102 & 048000101  
 AND  
 JAMES CITY COUNTY TAX PARCEL 0622010001  
**NEWPORT NEWS AND JAMES CITY COUNTY, VIRGINIA**

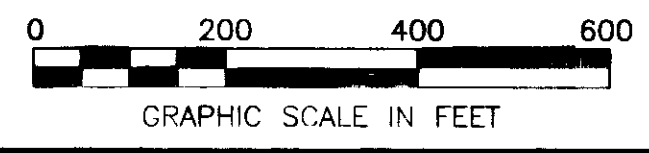
---

DES. N/A    JOB NO. 71874  
 DRN. PP    SCALE 1" = 200'  
 CKD. JGB    DATE 4/29/2013

---

SHEET NO. 21 OF 30  
 FILE NO. 71874\_plat.dwg

VIRGINIA  
 IN THE CLERK'S OFFICE OF THE CIRCUIT COURT OF THE CITY/COUNTY OF **WILLIAMSBURG/JAMES CITY COUNTY**  
 VIRGINIA ON THIS **25<sup>TH</sup>** DAY OF **November** 2013, THIS PLAT WAS RECEIVED AND ADMITTED TO  
 RECORD IN MAP BOOK \_\_\_\_\_ AT PAGE \_\_\_\_\_ AT **10:08 AM** as 130026366  
 TESTE: **DAVID B. WOOLPERT, CLERK** by **Janeke Washburn, Deputy Clerk**  
 CLERK



**WOOLPERT**  
 DESIGN | OCCUPANTIAL | INFRASTRUCTURE  
 676 INDEPENDENCE PARKWAY  
 SUITE 100  
 CHESAPEAKE, VA 23320-5218  
 TEL: 757.549.3549  
 FAX: 757.549.3540