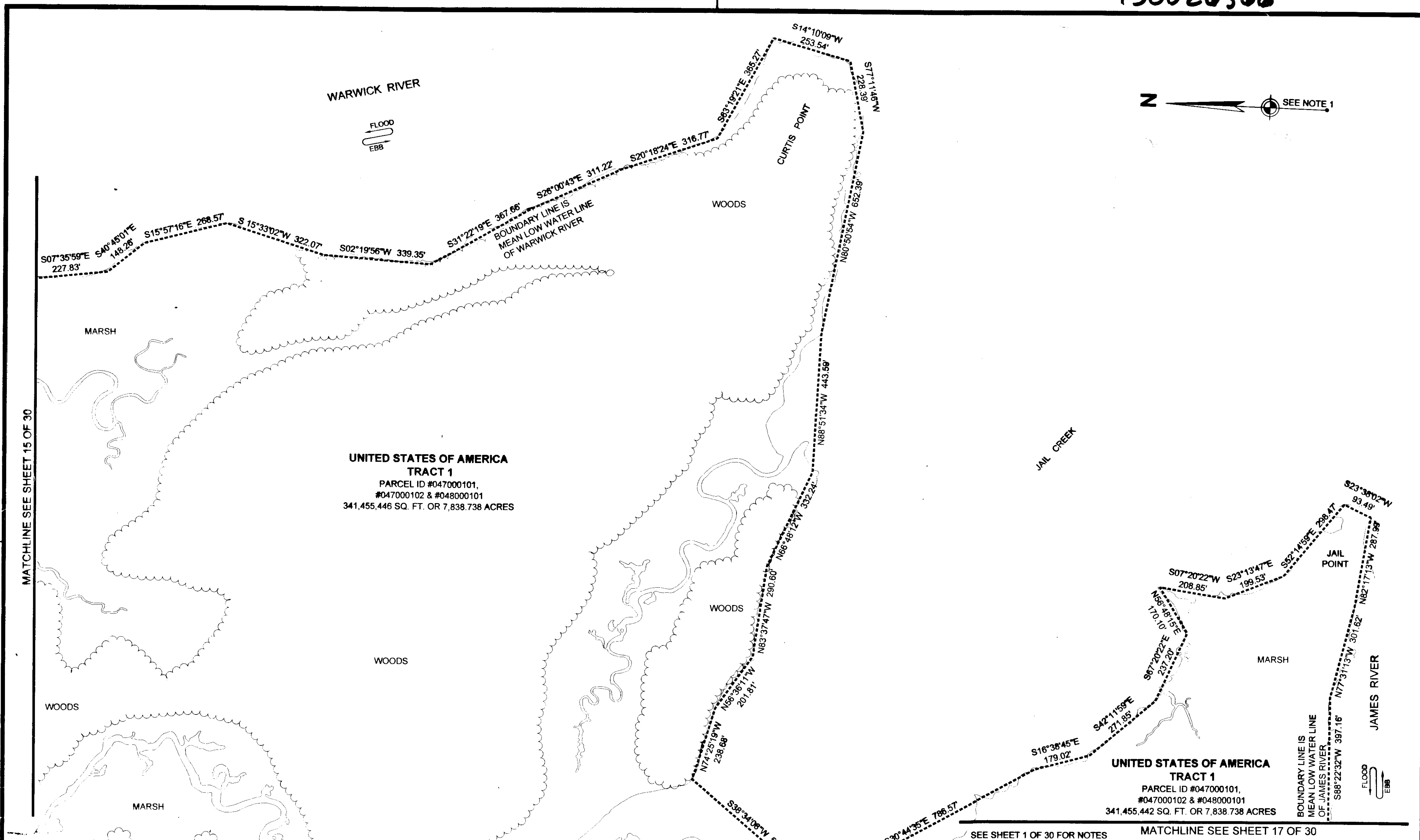


130026366

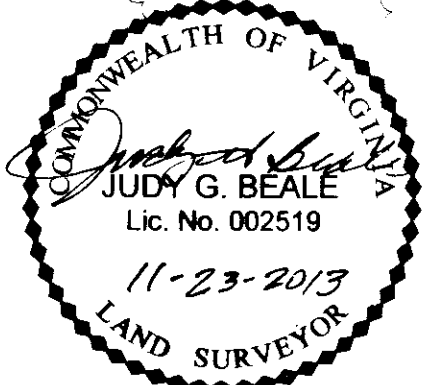


UNITED STATES OF AMERICA
TRACT 1
PARCEL ID #047000101,
#047000102 & #048000101
341,455,446 SQ. FT. OR 7,838.738 ACRES

UNITED STATES OF AMERICA
TRACT 1
PARCEL ID #047000101,
#047000102 & #048000101
341,455,442 SQ. FT. OR 7,838.738 ACRES

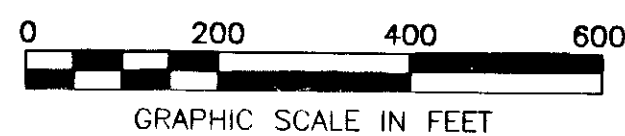
MATCHLINE SEE SHEET 15 OF 30

SEE SHEET 1 OF 30 FOR NOTES MATCHLINE SEE SHEET 17 OF 30



30 Large Brown Plats Recorded
herewith as # 130026366

- LEGEND**
- IRON PIN FOUND
 - IRON PIPE FOUND
 - T-BAR FOUND
 - NAIL FOUND
 - CONCRETE MONUMENT FOUND
 - MONUMENT SET
 - IRON PIN SET
- BOUNDARY LINE
 - - - TIE LINE
 - CITY/COUNTY LINE
 - RIGHT OF WAY LINE
 - EASEMENT LINE
 - ADJOINER LINE
 - EXIST. RAILROAD TRACKS
 - EDGE OF WOODS



BOUNDARY SURVEY
OF PROPERTY OF
UNITED STATES OF AMERICA
JOINT BASE LANGLEY-EUSTIS (JBLE)
NEWPORT NEWS TAX PARCELS 047000100, 047000102 & 048000101
AND
JAMES CITY COUNTY TAX PARCEL 0622010001
NEWPORT NEWS AND JAMES CITY COUNTY, VIRGINIA

WOOLPERT
DESIGN | GEOGRAPHICAL | INFRASTRUCTURE

676 INDEPENDENCE PARKWAY
SUITE 100
CHESAPEAKE, VA 23320-5218
TEL: 757.549.3549
FAX: 757.549.3540

DES. N/A JOB NO. 71874
DRN. PP SCALE 1" = 200'
CKD. JGB DATE 4/29/2013

SHEET NO. 16 OF 30
FILE NO. 71874_plat.dwg

VIRGINIA:
IN THE CLERK'S OFFICE OF THE CIRCUIT COURT OF THE CITY/COUNTY OF WILLIAMSBURG/JAMES CITY COUNTY
VIRGINIA ON THIS 25TH DAY OF November, 2013, THIS PLAT WAS RECEIVED AND ADMITTED TO
RECORD IN MAP BOOK _____ AT PAGE _____ AT 10:08 AM as Inst 130026366

TESTE: **BITTY B. WOOLPERT, CLERK** by: *Fabrizio A. Kraljic, Deputy Clerk*
CLERK