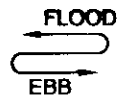
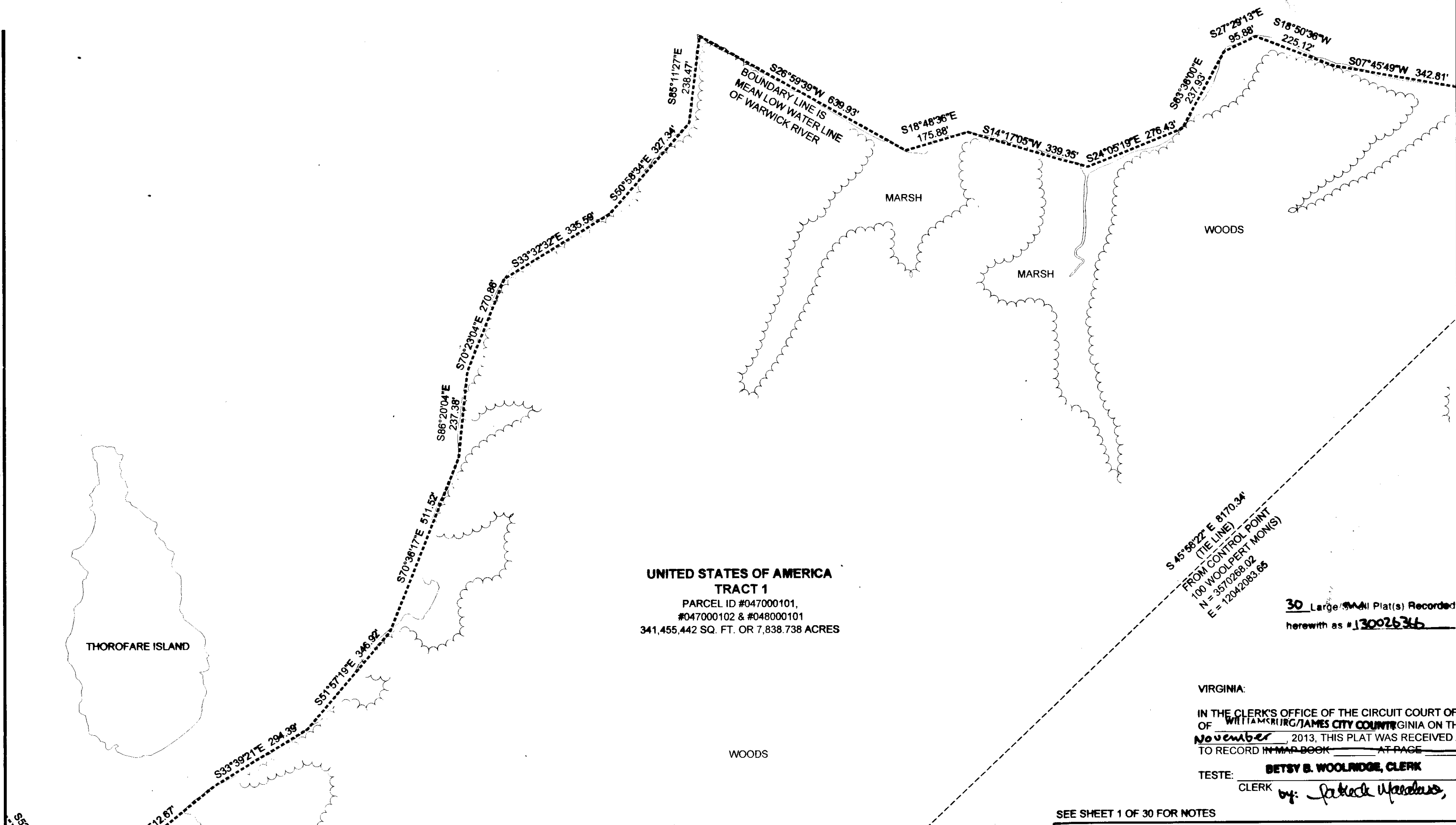


WARWICK RIVER



MATCHLINE SEE SHEET 13 OF 30

MATCHLINE SEE SHEET 15 OF 30



UNITED STATES OF AMERICA TRACT 1
PARCEL ID #047000101,
#047000102 & #048000101
341,455,442 SQ. FT. OR 7,838.738 ACRES

S 45° 58' 22" E 8170.34'
(TIE LINE)
FROM CONTROL POINT
100 WOOLPERT MON(S)
N = 3570293.43
E = 12044045.78

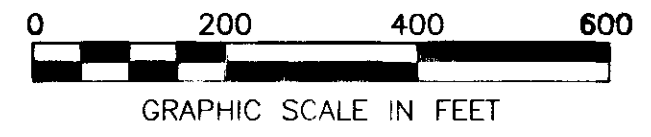
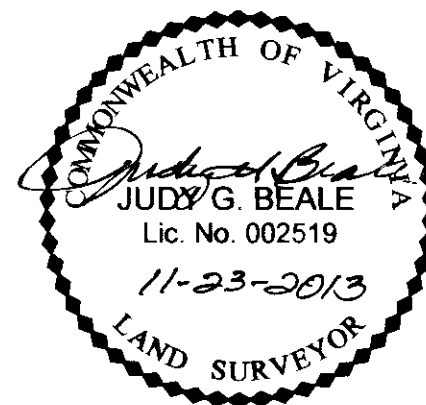
30 Large Small Plat(s) Recorded
herewith as # 130026366

VIRGINIA:
IN THE CLERK'S OFFICE OF THE CIRCUIT COURT OF THE CITY/COUNTY OF WILLIAMSBURG/JAMES CITY COUNTY VIRGINIA ON THIS 25TH DAY OF November, 2013, THIS PLAT WAS RECEIVED AND ADMITTED TO RECORD IN MAP BOOK AT PAGE AT 10:08 AM.
TESTE: **BETSY B. WOOLPERT, CLERK**
CLERK *by: Patrick Meadows, Deputy Clerk*

SEE SHEET 1 OF 30 FOR NOTES

LEGEND

- IRON PIN FOUND
- IRON PIPE FOUND
- T-BAR FOUND
- NAIL FOUND
- CONCRETE MONUMENT FOUND
- MONUMENT SET
- IRON PIN SET
- BOUNDARY LINE
- - - TIE LINE
- ==== CITY/COUNTY LINE
- ==== RIGHT OF WAY LINE
- EASEMENT LINE
- ADJOINER LINE
- ||||| EXIST. RAILROAD TRACKS
- ~~~~~ EDGE OF WOODS



BOUNDARY SURVEY
OF PROPERTY OF
UNITED STATES OF AMERICA
JOINT BASE LANGLEY-EUSTIS (JBLE)
NEWPORT NEWS TAX PARCELS 047000100, 047000102 & 048000101
AND
JAMES CITY COUNTY TAX PARCEL 0622010001
NEWPORT NEWS AND JAMES CITY COUNTY, VIRGINIA

WOOLPERT
DESIGN | OCCUPANTIAL | INFRASTRUCTURE
676 INDEPENDENCE PARKWAY
SUITE 100
CHESAPEAKE, VA 23320-5218
TEL: 757.549.3549
FAX: 757.549.3540

DES. N/A JOB NO. 71874
DRN. PP SCALE 1" = 200'
CKD. JGB DATE 4/29/2013
SHEET NO. 14 OF 30
FILE NO. 71874_plat.dwg